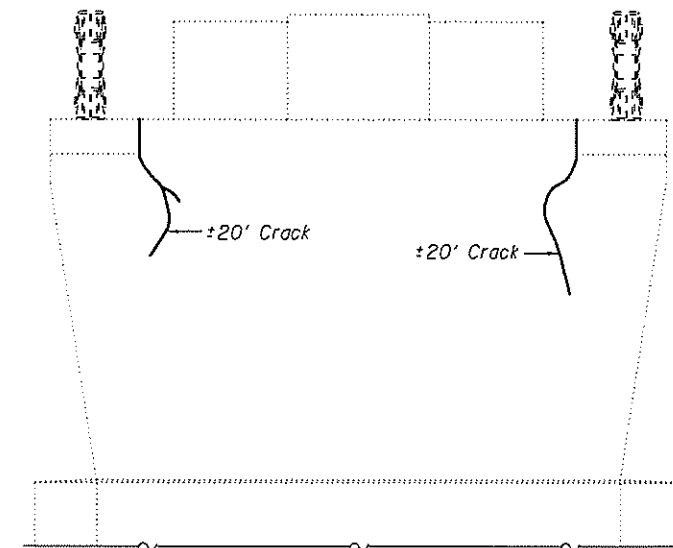
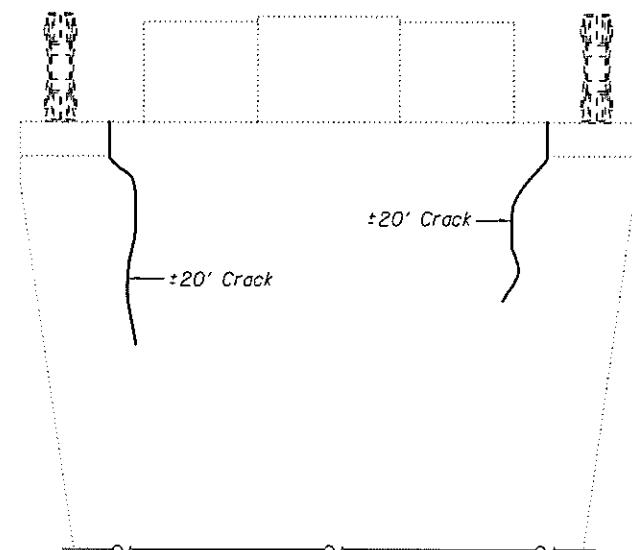


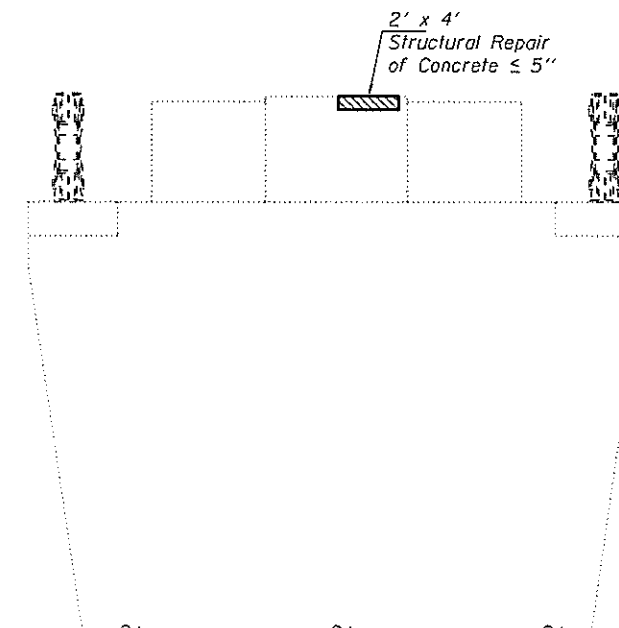
PIER 8 - WEST FACE



PIER 8 - EAST FACE



PIER 11 - WEST FACE



PIER 12 - EAST FACE

DESIGNED <u>ATH</u>	EXAMINED <u>Timothy A. Anzani</u>	DATE <u>JUNE 24, 2014</u>
CHECKED <u>GGE</u>	ACTING ENGINEER OF STRUCTURAL SERVICES	
DRAWN <u>Kyle M. Steffen</u>	PASSED <u>Mark Carl Perry</u>	REVISED _____
CHECKED <u>ATH GGE</u>	ACTING ENGINEER OF BRIDGES AND STRUCTURES	REVISED _____

STATE OF ILLINOIS
DEPARTMENT OF TRANSPORTATION

EPOXY CRACK SEALING & STRUCTURAL REPAIR OF CONCRETE DETAILS
SN 001-0068

SHEET NO. 13 OF 15 SHEETS

F.A. RTE.	SECTION	COUNTY	TOTAL SHEETS	SHEET NO.
63	(12B)B,JR,1-7	ADAMS	31	29
CONTRACT NO. 72G80				
ILLINOIS FED. AID PROJECT				