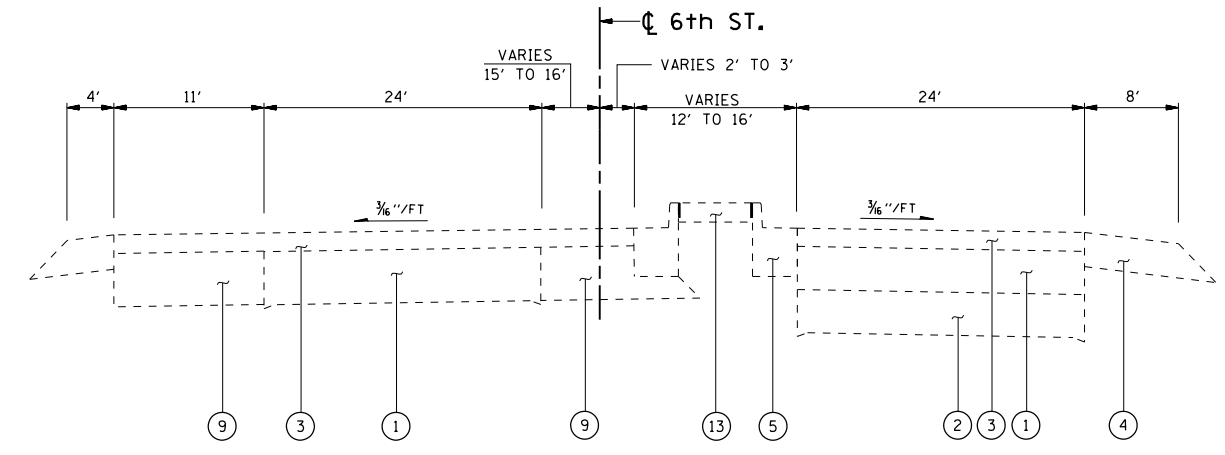
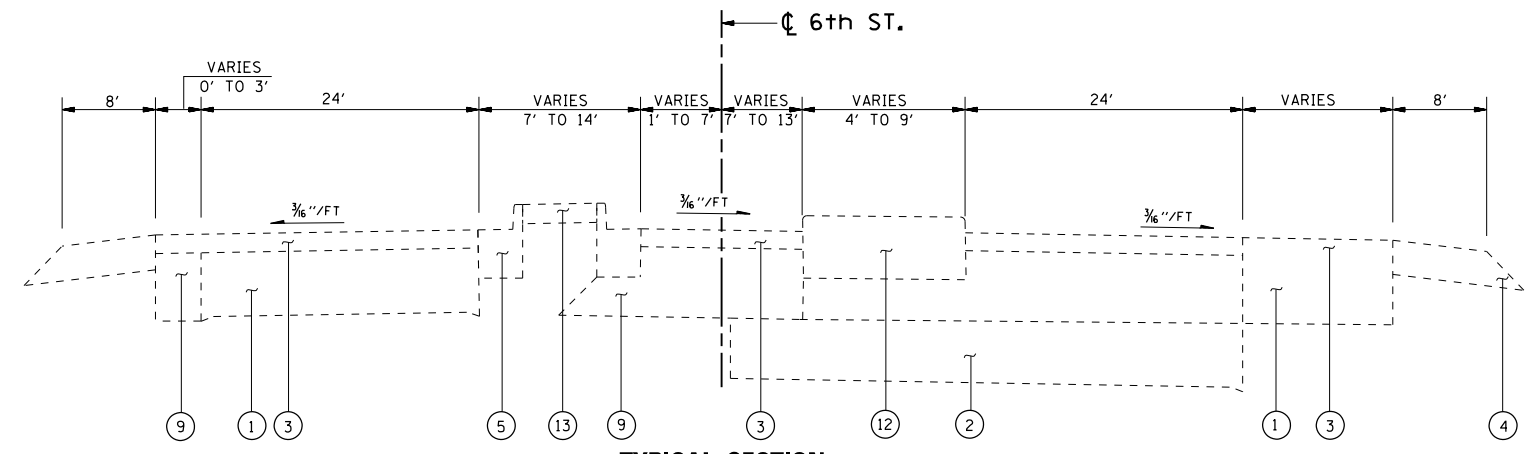


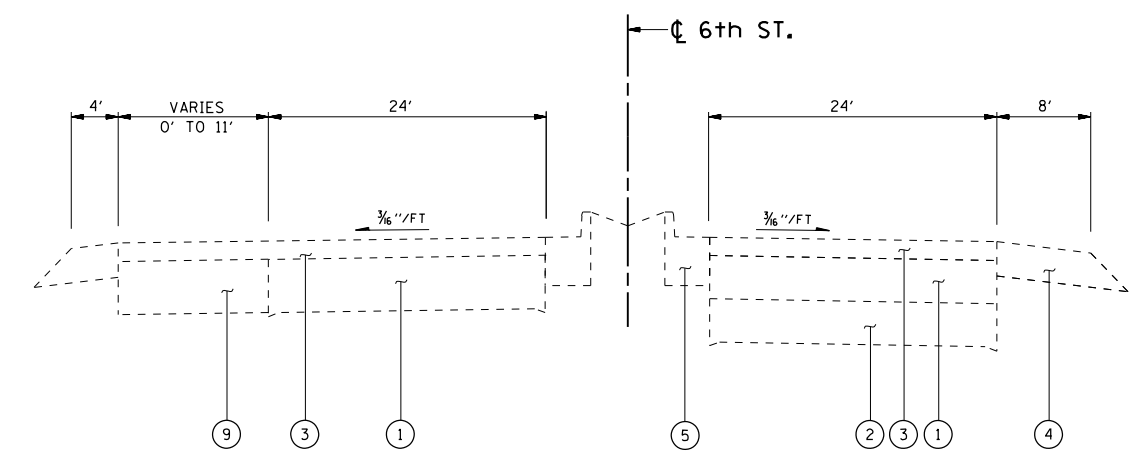
TYPICAL SECTION
 STA. 9+81.52 TO STA. 13+45 LT
 STA. 9+81.52 TO STA. 13+95 RT



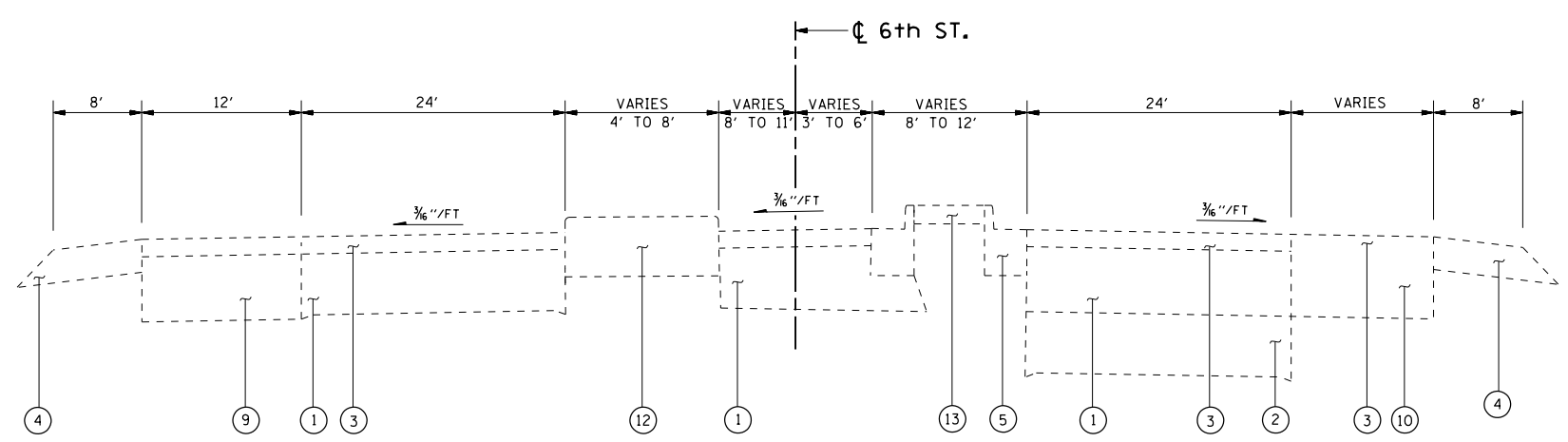
TYPICAL SECTION
 STA. 17+07 TO STA. 18+31



TYPICAL SECTION
 STA. 13+45 TO STA. 14+90 LT
 STA. 13+95 TO STA. 14+90 RT



TYPICAL SECTION
 STA. 18+31 TO STA. 20+88



TYPICAL SECTION
 STA. 16+17 TO STA. 17+07

- LEGEND**
- ① EX PCC PAVEMENT, 10"
 - ② EX ORIGINAL PCC PAVEMENT, 9"-7"-9"
 - ③ EX BINDER & SURFACE COURSES
 - ④ EX BITUMINOUS SHOULDER
 - ⑤ EX COMBINATION CURB & GUTTER M-6.24
 - ⑥ EX COMBINATION CURB & GUTTER M-6.06
 - ⑦ EX COMBINATION CURB & GUTTER SPECIAL
 - ⑧ EX COMBINATION CURB & GUTTER
 - ⑨ EX BITUMINOUS CONCRETE BASE COURSE WIDENING
 - ⑩ EX BITUMINOUS BASE COURSE
 - ⑪ EX BITUMINOUS CONCRETE BASE COURSE
 - ⑫ EX CORRUGATED MEDIAN
 - ⑬ EX CONCRETE MEDIAN SURFACE

FILE NAME =	USER NAME = sparksgw	DESIGNED - MOK	REVISED -
ei:\pw\work\pwidot\sparksgw\10397739\10672H08-sht-typic1.dgn		DRAWN - MOK	REVISED -
Default	PLOT SCALE = 200.0000' / in.	CHECKED -	REVISED -
	PLOT DATE = May-22-2014 04:02:04PM	DATE -	REVISED -

**STATE OF ILLINOIS
 DEPARTMENT OF TRANSPORTATION**

TYPICAL SECTIONS			
SCALE:	SHEET	OF SHEETS	STA. TO STA.

F.A.P. RTE.	SECTION	COUNTY	TOTAL SHEETS	SHEET NO.
666	***	SANGAMON	19	6
ILLINOIS FED. AID PROJECT			CONTRACT NO. 72H08	