

F.A.P. RTE.	SECTION	COUNTY	TOTAL SHEETS	SHEET NO.
320	-	LOGAN	15	1
		ILLINOIS	CONTRACT NO. 72H22	

(24) I-2

D-96-093-14

STATE OF ILLINOIS  
DEPARTMENT OF TRANSPORTATION  
DIVISION OF HIGHWAYS

**PROPOSED  
SPRING ROAD REPAIR**

FAP ROUTE 320 (IL 10 / IL 121)  
SECTION (24) I-2

**PAVEMENT PATCHING & INLETS  
LOGAN COUNTY**

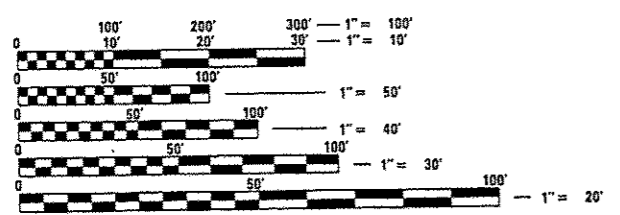
C-96-093-14

FOR INDEX OF SHEETS, SEE SHEET NO. 2

WHEREVER IN THESE PLANS SECTION D6 SPRING RD REPAIR 2014-21 IS MENTIONED, IT SHALL MEAN SECTION (24)I-2

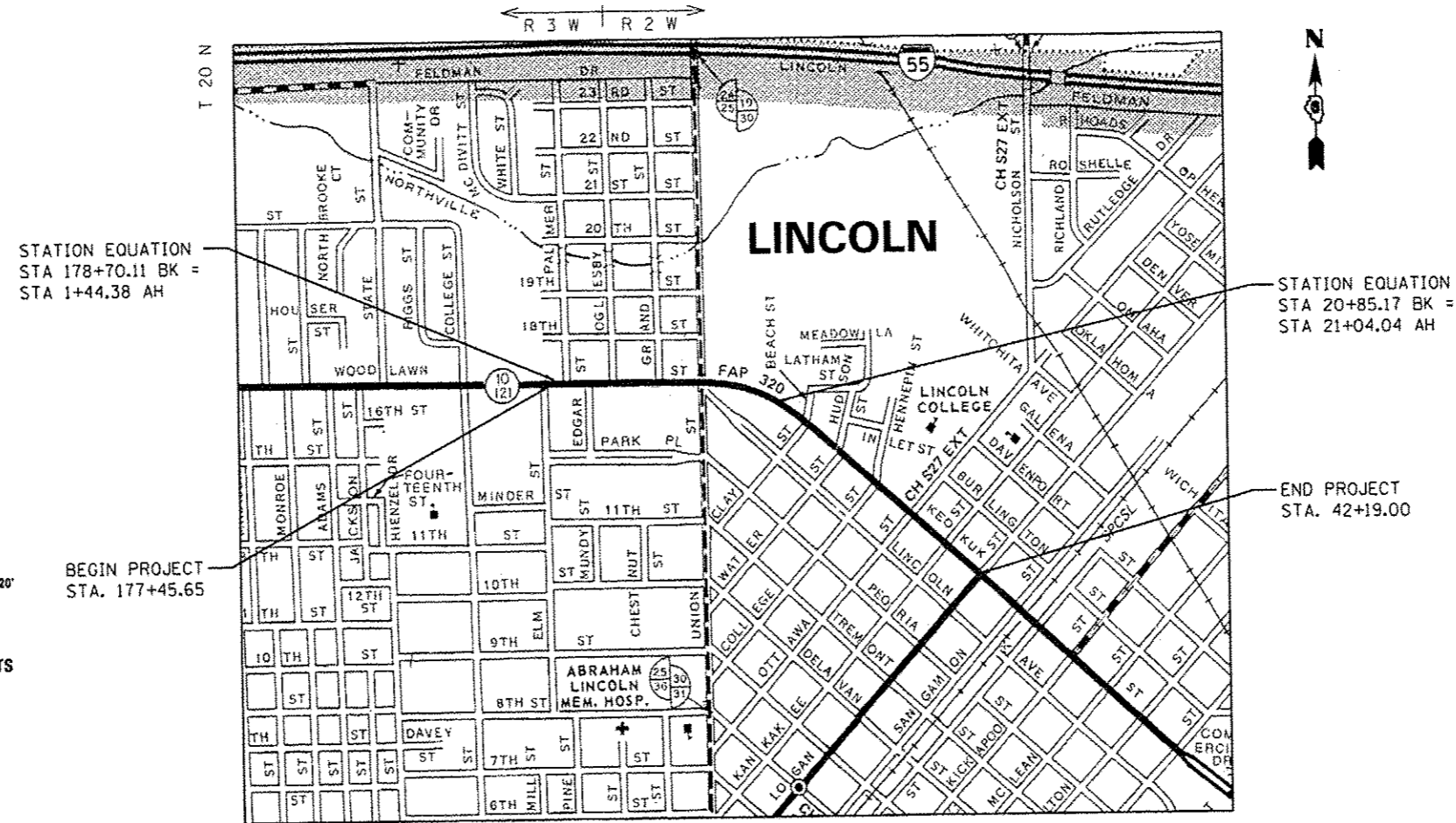


F.A.P. 320 (IL 10 & IL 121)  
ADT (2013) : 14200  
PV = 92.78% SU = 3.17% MU = 4.05%  
SPEED LIMIT: 30 MPH (POSTED)



FULL SIZE PLANS HAVE BEEN PREPARED USING STANDARD ENGINEERING SCALES. REDUCED SIZED PLANS WILL NOT CONFORM TO STANDARD SCALES. IN MAKING MEASUREMENTS ON REDUCED PLANS, THE ABOVE SCALES MAY BE USED.

J.U.L.I.E.  
JOINT UTILITY LOCATION INFORMATION FOR EXCAVATION  
1-800-892-0123  
OR 811



LOCATION MAP

NET LENGTH = 4181.21 FT. = 0.792 MILE

MAINTENANCE FIELD ENGINEER (ACTING):  
MARSHALL METCALF (217) 785-5312

CONTRACT NO. 72H22

STATE OF ILLINOIS  
DEPARTMENT OF TRANSPORTATION  
DIVISION OF HIGHWAYS

SUBMITTED May 19 20 14

*Raymond*  
DEPUTY DIRECTOR OF HIGHWAYS, REGION ENGINEER

June 27 20 14  
*John D. Baranzelli* P.E.  
ENGINEER OF DESIGN AND ENVIRONMENT

June 27 20 14  
*Cher O'Sullivan* P.E.  
DIRECTOR OF HIGHWAYS, CHIEF ENGINEER

**PRINTED BY THE AUTHORITY  
OF THE STATE OF ILLINOIS**