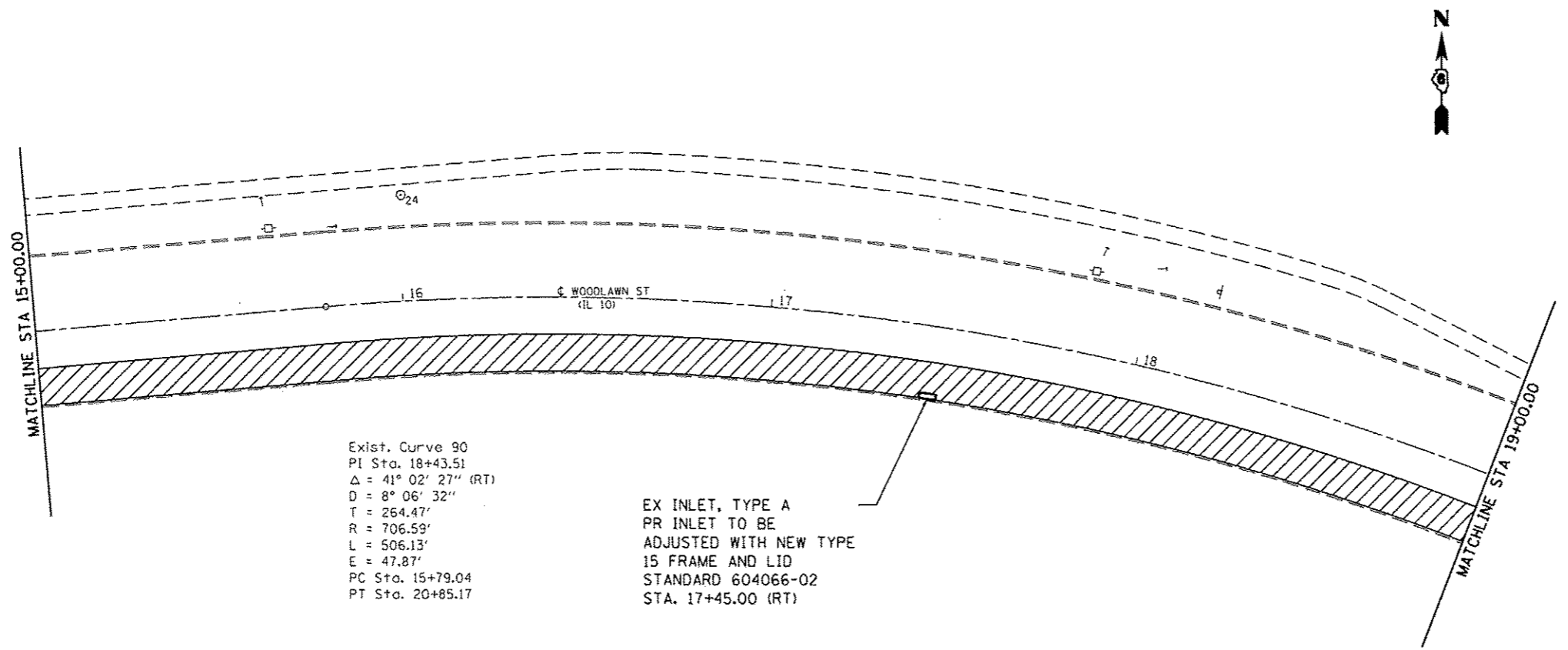


▨ PAVEMENT PATCHING, 12"



Exist. Curve 90  
 PI Sta. 18+43.51  
 $\Delta = 41^\circ 02' 27''$  (RT)  
 $D = 8^\circ 06' 32''$   
 $T = 264.47'$   
 $R = 706.59'$   
 $L = 506.13'$   
 $E = 47.87'$   
 PC Sta. 15+79.04  
 PT Sta. 20+85.17

EX INLET, TYPE A  
 PR INLET TO BE  
 ADJUSTED WITH NEW TYPE  
 15 FRAME AND LID  
 STANDARD 604066-02  
 STA. 17+45.00 (RT)

▨ PAVEMENT PATCHING, 12"

FILE NAME * S:\CONTRMAINT\CAD\72H22 - IL 18 - Lincoln Patching\plansheets.dgn	USER NAME * shahid	DESIGNED - DMS	REVISED -	<b>STATE OF ILLINOIS DEPARTMENT OF TRANSPORTATION</b>	<b>PLAN SHEET FAP 320</b>			F.A.P. RTE. 320	SECTION *	COUNTY LOGAN	TOTAL SHEETS 15	SHEET NO. 10
PLOT SCALE * 40,0000 / in.	CHECKED -	REVISOR -	REVISOR -		SCALE:	SHEET 2	OF 5 SHEETS	STA.	TO STA.	CONTRACT NO. 72H22		
PLOT DATE * May-19-2014 11:43:25AM	DATE -	REVISOR -	REVISOR -		ILLINOIS FED. AID PROJECT							
Default					* D6 SPRING RD REPAIR 2014-24							