

F.A.P. RTE.	SECTION	COUNTY	TOTAL SHEETS	SHEET NO.
717	(102)RS-4, (103)RS-3	LOGAN	25	1
		ILLINOIS	CONTRACT NO. 72H27	

STATE OF ILLINOIS
DEPARTMENT OF TRANSPORTATION
DIVISION OF HIGHWAYS

PROPOSED HIGHWAY PLANS

FAP ROUTE 717 (IL 10)
SECTION (102)RS-4, (103)RS-3

LOGAN COUNTY

C-96-098-14

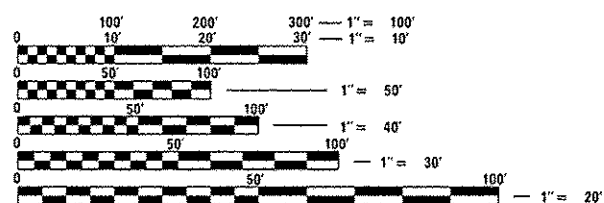
INDEX OF SHEETS

- 1: COVER SHEET
- 2: GENERAL NOTES
- 3-4: SUMMARY OF QUANTITIES
- 5-7: TYPICAL SECTIONS
- 8-11: SCHEDULE OF QUANTITIES
- 12-21: PLAN SHEETS
- 22: BUTT JOINT & RAMP DETAILS
- 23: SUPERELEVATION TRANSITION DETAILS
- 24-25: ENTRANCE DETAIL

HIGHWAY STANDARDS

000001-06	701201-04
001006	701306-03
442201-03	701311-03
630001-10	701421-06
701001-02	701901-03
701006-05	780001-04
701011-04	781001-03

FAP 717(IL 10)
ADT 2800 (2012)
TRUCK 530 (2012)
SU 15.71%
MU 3.21%

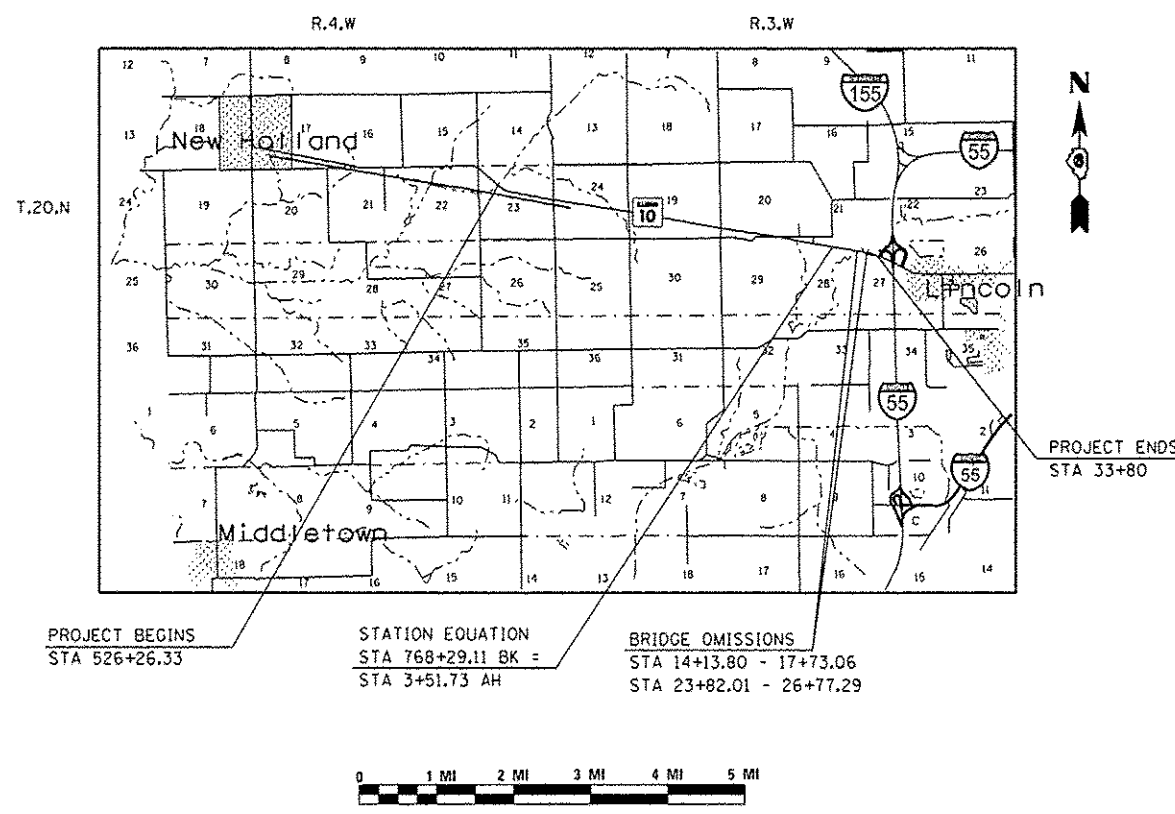


FULL SIZE PLANS HAVE BEEN PREPARED USING STANDARD ENGINEERING SCALES. REDUCED SIZED PLANS WILL NOT CONFORM TO STANDARD SCALES. IN MAKING MEASUREMENTS ON REDUCED PLANS, THE ABOVE SCALES MAY BE USED.

J.U.L.I.E.
JOINT UTILITY LOCATION INFORMATION FOR EXCAVATION
1-800-892-0123
OR 811

PROJECT ENGINEER: KEITH DONOVAN (217)782-4761
TEAM MANAGER: ED KERN (217)524-7547

CONTRACT NO. 72H27



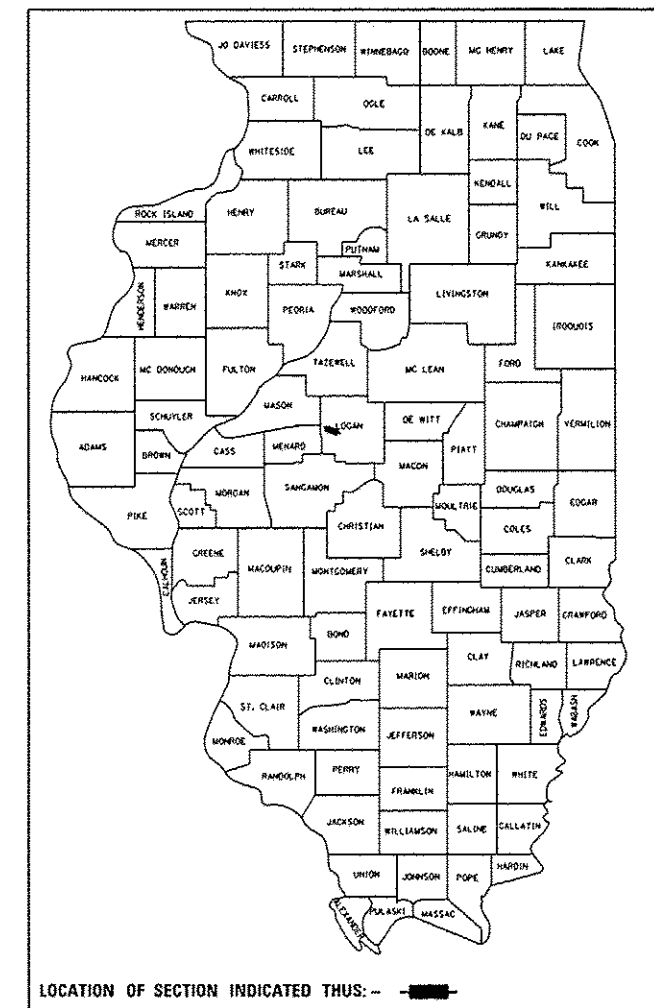
PROJECT BEGINS STA 526+26.33

STATION EQUATION
STA 768+29.11 BK =
STA 3+51.73 AH

BRIDGE OMISSIONS
STA 14+13.80 - 17+73.06
STA 23+82.01 - 26+77.29

GROSS LENGTH = 27,231.05 FT. = 5.16 MILE
NET LENGTH = 26,576.51 FT. = 5.03 MILE

D-96-098-14



STATE OF ILLINOIS
DEPARTMENT OF TRANSPORTATION
DIVISION OF HIGHWAYS

SUBMITTED June 6, 2014
Roger L. Driskell, JEM
DEPUTY DIRECTOR OF HIGHWAYS, REGION ENGINEER

June 27, 2014
John D. Baranzelli, P.E.
acting ENGINEER OF DESIGN AND ENVIRONMENT

June 27, 2014
Omer Osman, P.E.
DIRECTOR OF HIGHWAYS, CHIEF ENGINEER

**PRINTED BY THE AUTHORITY
OF THE STATE OF ILLINOIS**