

STATE OF ILLINOIS
DEPARTMENT OF TRANSPORTATION
DIVISION OF HIGHWAYS

F.A.I. RTE.	SECTION	COUNTY	TOTAL SHEETS	SHEET NO.
57	(15,18-20),(15-21,22)RS-2	Coles	15	1
		ILLINOIS	CONTRACT NO. 74468	

FOR INDEX OF SHEETS, SEE SHEET NO. 2

**PROPOSED
HIGHWAY PLANS**

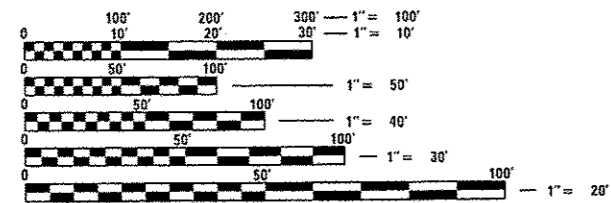
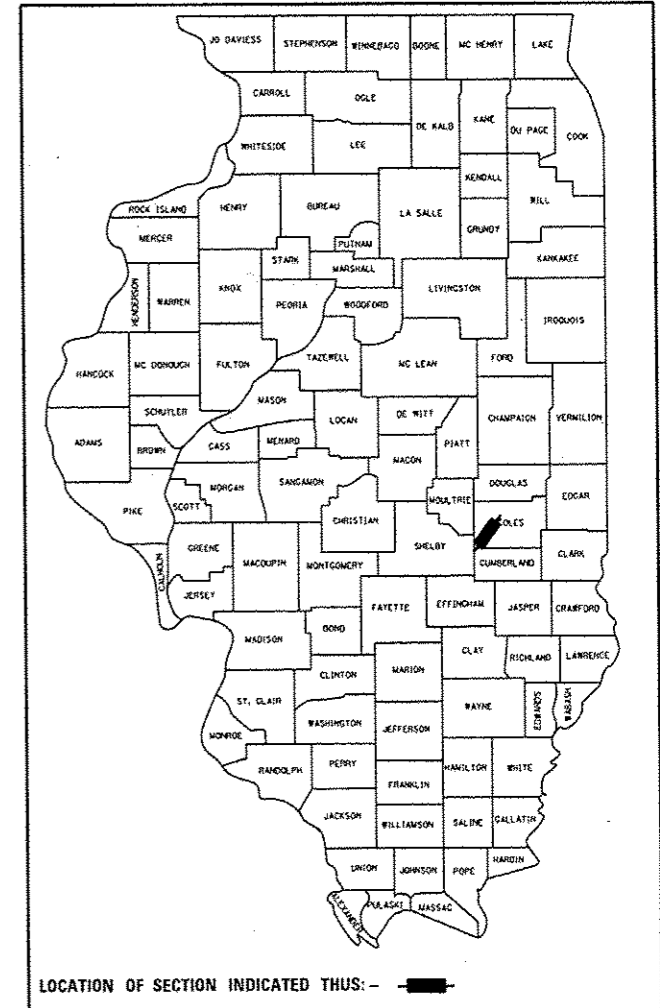
PAVING OMISSION
NB I-57: STA 427+05 TO STA 428+05

**FAI ROUTE 57 (I 57)
SECTION (15,18-20),(15-21,22)RS-2**

ADT (2013) = 17,600

**BITUMINOUS RESURFACING
COLES COUNTY**

C-97-110-10



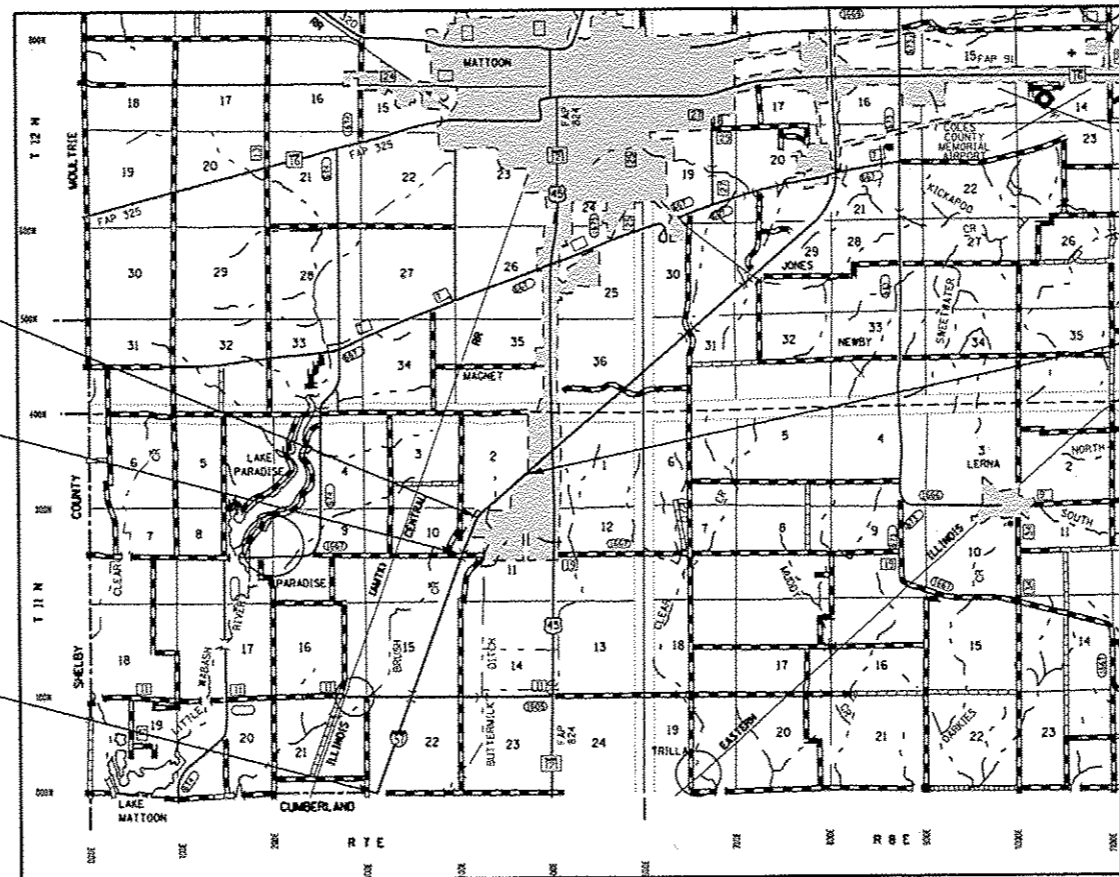
FULL SIZE PLANS HAVE BEEN PREPARED USING STANDARD ENGINEERING SCALES. REDUCED SIZED PLANS WILL NOT CONFORM TO STANDARD SCALES. IN MAKING MEASUREMENTS ON REDUCED PLANS, THE ABOVE SCALES MAY BE USED.

J.U.L.I.E.
JOINT UTILITY LOCATION INFORMATION FOR EXCAVATION
1-800-892-0123
OR 811

SN 015-8634
STA 452+72

RURAL/URBAN
STA 427+39

PROJECT BEGINS
STA 286+89



PROJECT ENDS
STA 481+59

GROSS LENGTH = 19,470 FT. = 3.69 MILE
NET LENGTH = 19,370 FT. = 3.67 MILE

PROJECT ENGINEER: MARK DAUGHERTY
PROJECT MANAGER: BRIAN BIERMAN

CONTRACT NO. 74468

STATE OF ILLINOIS
DEPARTMENT OF TRANSPORTATION
DIVISION OF HIGHWAYS

SUBMITTED June 20 20 14
Roger L. Drishell
DEPUTY DIRECTOR OF HIGHWAYS, REGION ENGINEER

June 27 20 14
John D. Baranzoli, PE, Inc.
ENGINEER OF DESIGN AND ENVIRONMENT

June 27 20 14
Omer Osman, PE, Inc.
DIRECTOR OF HIGHWAYS, CHIEF ENGINEER

**PRINTED BY THE AUTHORITY
OF THE STATE OF ILLINOIS**

GENERAL NOTES

18 SQ YD OF STONE RIPRAP, CLASS A4 AND FILTER FABRIC HAVE BEEN INCLUDED IN THE PLANS TO ADDRESS AN EXISTING SCOUR ISSUE AT THE EAST END OF THE EXISTING BOX CULVERT AT STA 452+72. PROPOSED RIPRAP SHALL BE PLACED 2' DEEP AS DIRECTED BY THE ENGINEER.

TEMPORARY TAPE SHALL BE USED ON THE SURFACE COURSE AND HOT-MIX ASPHALT SHOULDERS. PAINT SHALL BE USED ON MILLED SURFACES.

THE MATERIAL USED FOR AGGREGATE WEDGE SHOULDER, TYPE B SHALL BE CRUSHED STONE, CRUSHED CONCRETE, OR RAP.

THE TOTAL QUANTITY OF THERMOPLASTIC PAVEMENT MARKING - LINE 4" CONSISTS OF 38,940 FEET OF YELLOW AND 38,940 FEET OF WHITE.

THE TOTAL QUANTITY OF PREFORMED PLASTIC PAVEMENT MARKING, TYPE B - INLAID - LINE 6" CONSISTS OF 9,735 FEET OF WHITE.

THE TOTAL QUANTITY OF GUARDRAIL MARKER, TYPE A CONSISTS OF 53 MONODIRECTIONAL CRYSTAL MARKERS.

THE RAISED REFLECTIVE PAVEMENT MARKERS SHALL BE PLACED AS DOUBLE MARKERS ON I-57 AS SHOWN ON STANDARD 781001. THE TOTAL QUANTITY OF RAISED REFLECTIVE PAVEMENT MARKERS IS 974 ONE-WAY CRYSTAL.

ALL EXISTING INTERSTATE DELINEATORS SHALL BE REMOVED AS DIRECTED BY THE ENGINEER. THIS WORK WILL BE CONSIDERED INCLUDED IN THE COST OF THE CONTRACT ITEMS INVOLVED AND NO EXTRA COMPENSATION WILL BE ALLOWED.

ALL OF THE EXISTING HMA SHALL BE REMOVED OFF THE ORIGINAL CONCRETE PAVEMENT. THE SHOULDERS SHALL BE MILLED AT INTERMITTENT LOCATIONS TO ALLOW FOR ADEQUATE DRAINAGE. THE LOCATIONS SHALL BE DETERMINED BY THE ENGINEER IN THE FIELD. THE COST OF ALLOWING ADEQUATE DRAINAGE SHALL BE INCLUDED IN THE COST OF THE PAY ITEMS INVOLVED.

AN ESTIMATED QUANTITY OF HOT-MIX ASPHALT FOR PATCHING POTHOLES (COLD MIX) HAS BEEN INCLUDED FOR ANY NECESSARY POTHOLE PATCHING. POTHOLE PATCHING LOCATIONS INCLUDE ORIGINAL CONCRETE PAVEMENT LOCATIONS DISCOVERED AFTER FULL-DEPTH ASPHALT REMOVAL AND ANY EXISTING HMA SHOULDER LOCATIONS DAMAGED BY TRAFFIC DURING STAGE CONSTRUCTION. THE QUANTITIES OF POTHOLE PATCHING SHOWN IN THE PLANS ARE ESTIMATES ONLY, THE FINAL LOCATIONS AND QUANTITIES SHALL BE DETERMINED BY THE ENGINEER IN THE FIELD.

THE RESIDENT ENGINEER SHALL BE THE SOLE JUDGE CONCERNING THE CURING TIME FOR THE VARIOUS HOT-MIX ASPHALT LIFTS.

THE CONTRACTOR SHALL PROVIDE INTERNET ACCESSIBILITY TO THE HOT-MIX ASPHALT PLANT QUALITY CONTROL LAB SO THAT HOT-MIX ASPHALT PLANT REPORTS CAN BE E-MAILED TO THE DISTRICT HEADQUARTERS. THIS WORK SHALL BE INCLUDED IN THE COST OF ALL HOT-MIX ASPHALT ITEMS.

IN ADDITION TO THE REQUIREMENTS IN ARTICLE 701.15(J), A LAPTOP COMPUTER SHALL BE SUPPLIED BY THE CONTRACTOR.

A UNIFORMLY STRAIGHT SAW CUT SHALL BE MADE AT LOCATIONS WHERE PROPOSED NEW CONSTRUCTION WILL ABUT EXISTING HOT-MIX ASPHALT SURFACES. THE SAW CUT SHALL BE MADE FULL DEPTH THROUGH THE EXISTING SURFACE. THIS WORK WILL BE CONSIDERED INCLUDED IN THE COST OF THE CONTRACT ITEMS INVOLVED AND NO EXTRA COMPENSATION WILL BE ALLOWED.

THE FOLLOWING MIXTURE REQUIREMENTS ARE APPLICABLE FOR THIS PROJECT:

APPLICATION	AC/PG	DESIGN AIR VOIDS	MIXTURE COMPOSITION	FRICTION AGGREGATE
HMA SURFACE COURSE:				
POLYMERIZED HMA SURFACE COURSE, MIX "D", N90	SBS PG 70-22	4.0% @ N=90	IL - 9.5	MIX D
TOP BINDER COURSE LIFT:				
POLYMERIZED HMA BINDER COURSE, IL-19.0 FG, N90	SBS PG 70-22	4.0% @ N=90	IL - 19.0 FG	N/A
BOTTOM BINDER COURSE LIFT:				
HMA BINDER COURSE, IL-19.0 FG, N90	PG 64-22	4.0% @ N=90	IL - 19.0 FG	N/A
HMA SHOULDERS:				
HMA SURFACE COURSE, MIX "C", N90	PG 64-22	4.0% @ N=90	IL - 9.5	MIX C

INDEX OF SHEETS

SHEET NO	TITLE
1	COVER SHEET
2	GENERAL NOTES, INDEX OF SHEETS, LIST OF STANDARDS
3-4	SUMMARY OF QUANTITIES
5	TYPICAL SECTIONS
6-7	STAGING TYPICAL CROSS SECTIONS
8	PAVING DETAILS
9	SCHEDULES
10-13	PLAN SHEETS
14-15	PAVEMENT MARKING DETAILS

THE FOLLOWING STANDARDS ARE A PART OF THESE PLANS AND ARE INCLUDED FOLLOWING THE LAST NUMBERED SHEET OF THE PLANS.

000001-06	STANDARD SYMBOLS, ABBREVIATIONS, AND PATTERNS
001006	DECIMAL OF AN INCH AND OF A FOOT
630001-10	STEEL PLATE BEAM GUARDRAIL
630301-06	SHOULDER WIDENING FOR TYPE 1 (SPECIAL) GUARDRAIL TERMINALS
631033-05	TRAFFIC BARRIER TERMINAL, TYPE 6B
635001-01	DELINEATORS
635006-03	REFLECTOR AND TERMINAL MARKER PLACEMENT
635011-02	REFLECTOR MARKER AND MOUNTING DETAILS
642001-02	SHOULDER RUMBLE STRIPS, 16 IN.
701101-04	OFF-ROAD OPERATIONS, MULTILANE, 15' TO 24" FROM PAVEMENT EDGE
701106-02	OFF-RO OPERATIONS, MULTILANE, MORE THAN 15' AWAY
701400-07	APPROACH TO LANE CLOSURE, FREEWAY/EXPRESSWAY
701401-08	LANE CLOSURE, FREEWAY/EXPRESSWAY
701406-08	LANE CLOSURE, FREEWAY/EXPRESSWAY, DAY OPERATIONS ONLY
701411-08	LANE CLOSURE, MULTILANE, AT ENTRANCES OR EXIT RAMP, FOR SPEEDS >= 45 MPH
701426-06	LANE CLOSURE, MULTILANE, INTERMITTENT OR MOVING OPERATION, FOR SPEEDS >= 45 MPH
701901-03	TRAFFIC CONTROL DEVICES
780001-04	TYPICAL PAVEMENT MARKINGS
781001-03	TYPICAL APPLICATIONS RAISED REFLECTIVE PAVEMENT MARKERS

FILE NAME =	USER NAME = staff@emk	DESIGNED -	REVISED -	STATE OF ILLINOIS DEPARTMENT OF TRANSPORTATION	GENERAL NOTES & INDEX OF SHEETS	F.A.I. RTE.	SECTION	COUNTY	TOTAL SHEETS	SHEET NO.
o:\p\work\p\sidot\staff\emk\02166035\074468-ahc-gennote.dgn	DRAWN -	REVISED -	57			05.18-20,15-21,22,RS-2	Coles	15	2	
PLOT SCALE = 1/8" = 1'-0"	CHECKED -	REVISED -	CONTRACT NO. 74468							
PLOT DATE = 6/6/2014	DATE -	REVISED -	ILLINOIS FED. AID PROJECT							
Default				SCALE: n/a	SHEET 1 OF 1 SHEETS	STA. TO STA.				

SUMMARY OF QUANTITIES			100% STATE CONSTRUCTION TYPE CODE		
CODE NO	ITEM	UNIT	TOTAL QUANTITIES	0005 RURAL	0005 URBAN
28100107	STONE RIPRAP, CLASS A4	SO YD	18		18
28200200	FILTER FABRIC	SO YD	18		18
40600300	AGGREGATE (PRIME COAT)	TON	747	539	208
40600985	PORTLAND CEMENT CONCRETE SURFACE REMOVAL - BUTT JOINT	SO YD	235	235	
40600990	TEMPORARY RAMP	SO YD	106	53	53
40603092	HOT-MIX ASPHALT BINDER COURSE, IL-19.0 FG, N90	TON	12895	9253	3642
40603243	POLYMERIZED HOT-MIX ASPHALT BINDER COURSE, IL-19.0, FG, N90	TON	12987	9345	3642
40603545	POLYMERIZED HOT-MIX ASPHALT SURFACE COURSE, MIX "D", N90	TON	8700	6272	2428
44000151	HOT-MIX ASPHALT SURFACE REMOVAL, 1 1/2"	SO YD	61192	44076	17116
44000155	HOT-MIX ASPHALT SURFACE REMOVAL, 1 1/2"	SO YD	1422	1422	
44000169	HOT-MIX ASPHALT SURFACE REMOVAL, 5"	SO YD	102774	73867	28907
48102100	AGGREGATE WEDGE SHOULDER, TYPE B	TON	1232	889	343

SUMMARY OF QUANTITIES			100% STATE CONSTRUCTION TYPE CODE		
CODE NO	ITEM	UNIT	TOTAL QUANTITIES	0005 RURAL	0005 URBAN
48203100	HOT-MIX ASPHALT SHOULDERS	TON	5138	3700	1438
63000001	STEEL PLATE BEAM GUARDRAIL, TYPE A, 6 FOOT POSTS	FOOT	2113	1238	875
63100089	TRAFFIC BARRIER TERMINAL, TYPE 6B	EACH	4	3	1
63100167	TRAFFIC BARRIER TERMINAL, TYPE 1 (SPECIAL) TANGENT	EACH	18	11	7
63200310	GUARDRAIL REMOVAL	FOOT	3209	1942	1267
63500105	DELINEATORS	EACH	124	70	54
64200116	SHOULDER RUMBLE STRIPS, 16 INCH	FOOT	76780	55100	21680
67000400	ENGINEER'S FIELD OFFICE, TYPE A	CAL MO	4	3	1
67100100	MOBILIZATION	L SUM	1	0.7	0.3
70100420	TRAFFIC CONTROL AND PROTECTION, STANDARD 701411	EACH	1		1
70100700	TRAFFIC CONTROL AND PROTECTION, STANDARD 701406	L SUM	1	0.7	0.3

" * SPECIALTY ITEMS

FILE NAME :	USER NAME : etaffennk	DESIGNED -	REVISED -
c:\pwwork\p\dot\etaffennk\28186535\0774458-aht-soq.dgn		DRAWN -	REVISED -
		CHECKED -	REVISED -
		DATE -	REVISED -

STATE OF ILLINOIS
DEPARTMENT OF TRANSPORTATION

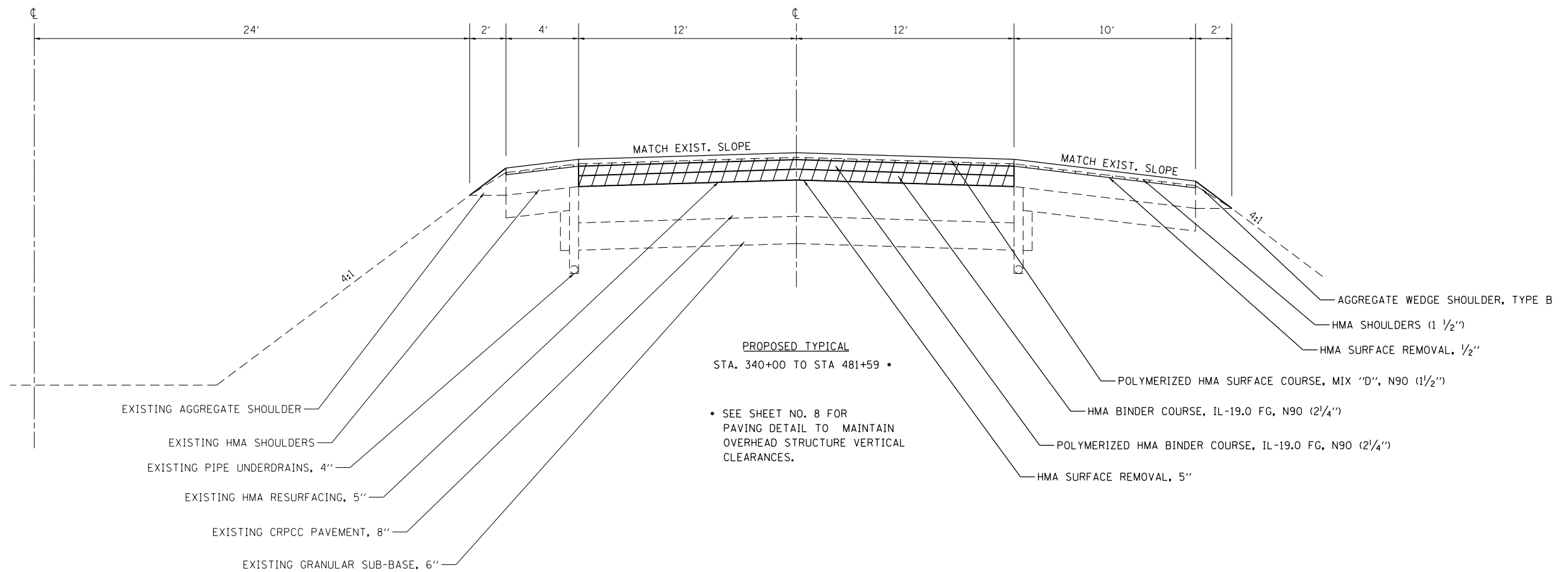
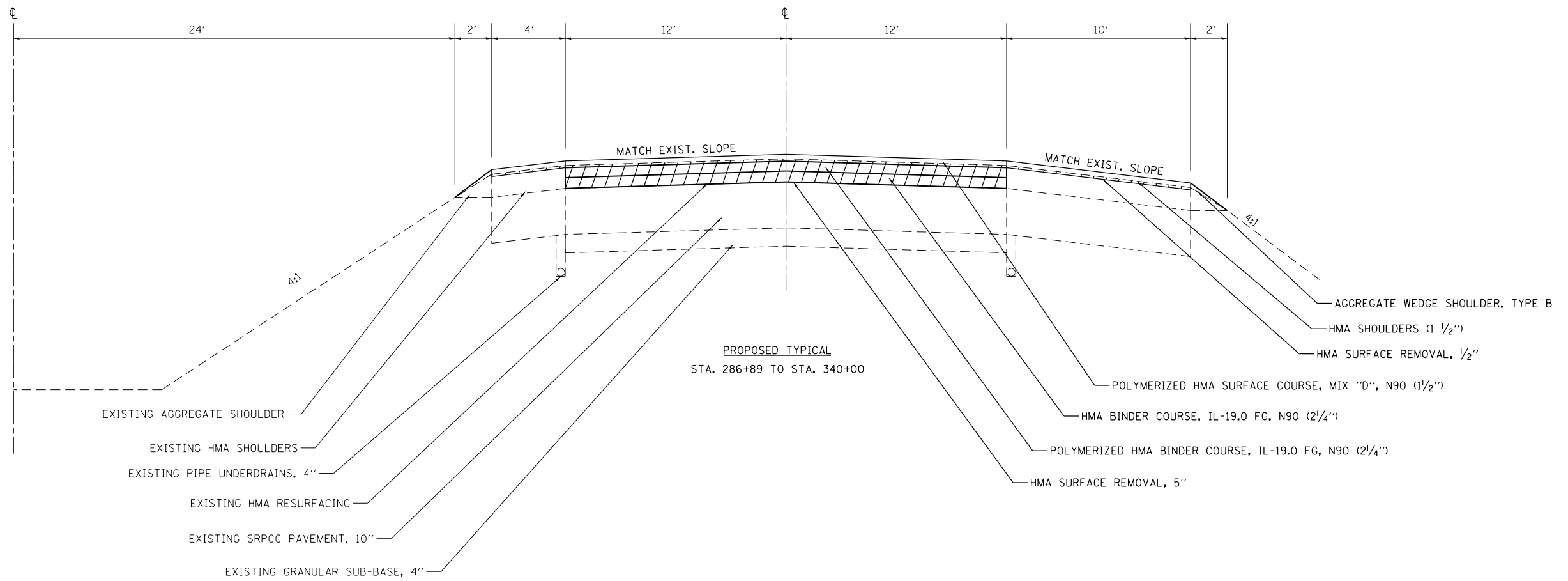
SUMMARY OF QUANTITIES	
SCALE: N/A	SHEET 1 OF 2 SHEETS STA. TO STA.

F.A.I. RTE.	SECTION	COUNTY	TOTAL SHEETS	SHEET NO.
57	(15,18-20),15-21,22	Colias	15	3
CONTRACT NO. 74468				
ILLINOIS FED. AID PROJECT				

SUMMARY OF QUANTITIES			TOTAL QUANTITIES	CONSTRUCTION TYPE CODE	
CODE NO	ITEM	UNIT		0005 RURAL	0005 URBAN
70100800	TRAFFIC CONTROL AND PROTECTION, STANDARD 701401	L SUM	1	0.7	0.3
70103815	TRAFFIC CONTROL SURVEILLANCE	CAL DA	10	7	3
70300100	SHORT TERM PAVEMENT MARKING	FOOT	21806	15736	6070
70300220	TEMPORARY PAVEMENT MARKING - LINE 4"	FOOT	77880	56200	21680
70300240	TEMPORARY PAVEMENT MARKING - LINE 6"	FOOT	9735	7025	2710
70301000	WORK ZONE PAVEMENT MARKING REMOVAL	SO FT	2336	1686	650
* 78000200	THERMOPLASTIC PAVEMENT MARKING - LINE 4"	FOOT	77880	56200	21680
* 78004230	PREFORMED PLASTIC PAVEMENT MARKING, TYPE B - INLAID - LINE 6"	FOOT	9735	7025	2710
* 78100100	RAISED REFLECTIVE PAVEMENT MARKER	EACH	974	703	271
78200410	GUARDRAIL MARKERS, TYPE A	EACH	53	31	22
78201000	TERMINAL MARKER - DIRECT APPLIED	EACH	18	11	7
78300100	PAVEMENT MARKING REMOVAL	SO FT	30828	22246	8582
X4060110	BITUMINOUS MATERIALS (PRIME COAT)	POUND	121273	87555	33718

SUMMARY OF QUANTITIES			TOTAL QUANTITIES	CONSTRUCTION TYPE CODE	
CODE NO	ITEM	UNIT		0005 RURAL	0005 URBAN
X7010410	SPEED DISPLAY TRAILER	CAL MO	3	2	1
X7015005	CHANGEABLE MESSAGE SIGN	CAL DA	28	20	8
X7830070	GROOVING FOR RECESSED PAVEMENT MARKING 5"	FOOT	77880	56200	21680
Z0005010	HOT-MIX ASPHALT FOR PATCHING POTHOLES (COLD MIX)	TON	4	3	1
Z0034105	MATERIAL TRANSFER DEVICE	TON	34583	24870	9713
Z0076600	TRAINEES	HOUR	500	360	140

13 * SPECIALTY ITEMS



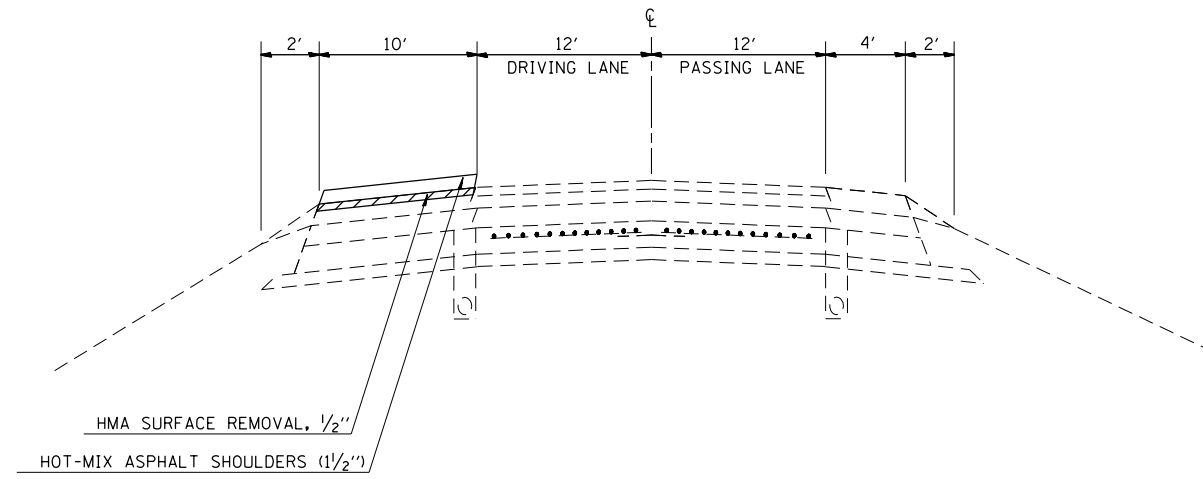
FILE NAME =	USER NAME = steffenmk	DESIGNED -	REVISED -
ci:\pw\work\p\dot\steffenmk\d0186535\074468-sh-typical.dgn		DRAWN -	REVISED -
Default	PLOT SCALE = 100.0000' / in.	CHECKED -	REVISED -
	PLOT DATE = 6/6/2014	DATE -	REVISED -

STATE OF ILLINOIS
DEPARTMENT OF TRANSPORTATION

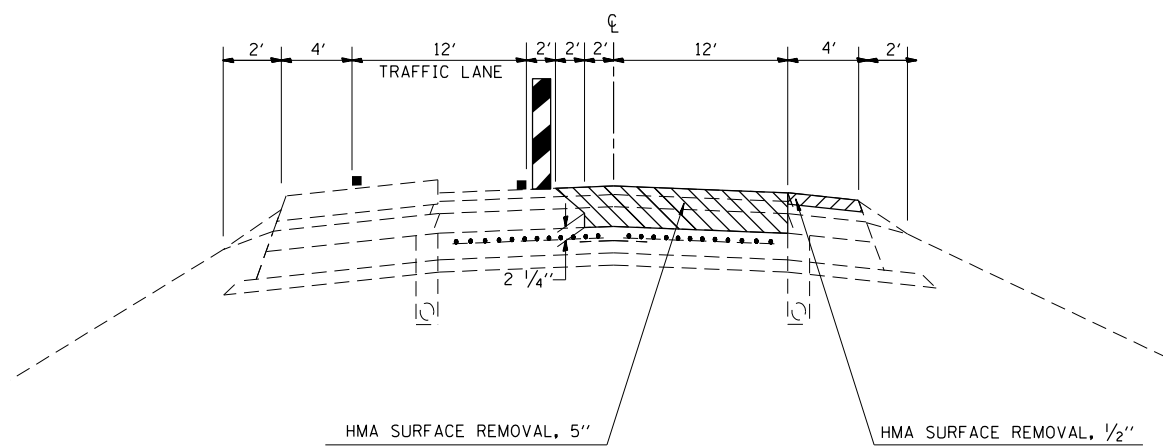
TYPICALS			
SCALE: N/A	SHEET 1	OF 1 SHEETS	STA. TO STA.

F.A.I. RTE.	SECTION	COUNTY	TOTAL SHEETS	SHEET NO.
57	(15,18-20),(15-21,22)RS-2	Coles	15	5
CONTRACT NO. 74468			ILLINOIS FED. AID PROJECT	

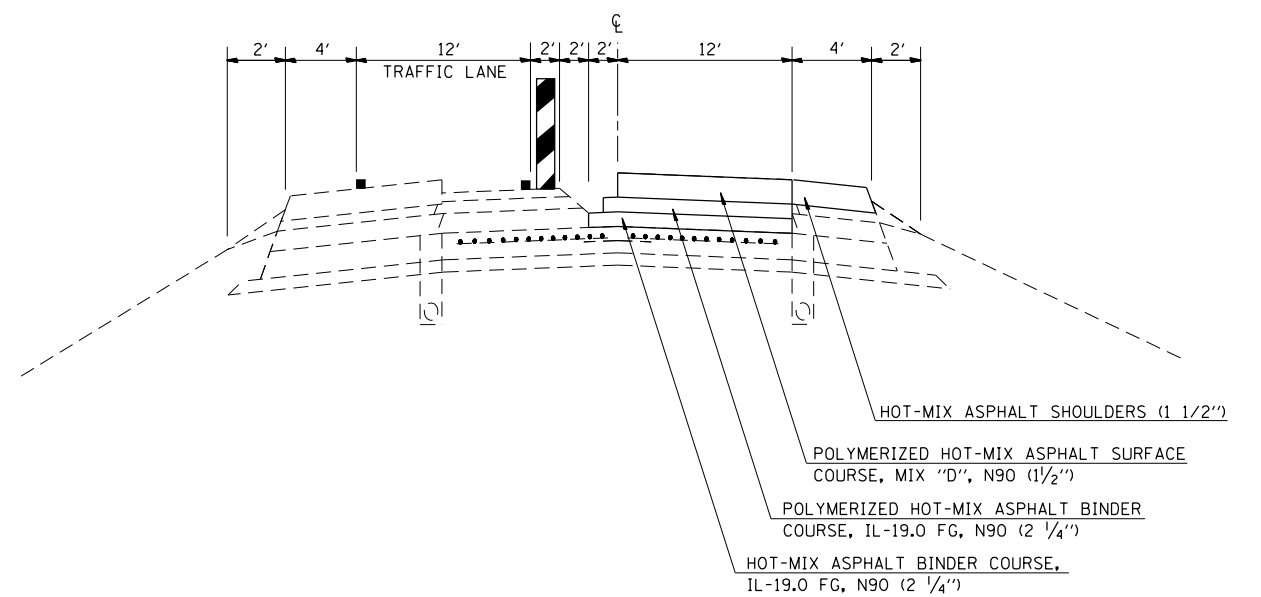
PRE-STAGE TYPICAL CROSS SECTION
NORTHBOUND LOOKING SOUTH



STAGE 1A TYPICAL CROSS SECTION
NORTHBOUND LOOKING SOUTH



STAGE 1B TYPICAL CROSS SECTION
NORTHBOUND LOOKING SOUTH



FILE NAME =	USER NAME = steffenmk	DESIGNED -	REVISED -
c:\pwork\pwork\stev\stev\186535\074468-sh-typical.dgn		DRAWN -	REVISED -
Default	PLOT SCALE = 100.0000' / in.	CHECKED -	REVISED -
	PLOT DATE = 6/6/2014	DATE -	REVISED -

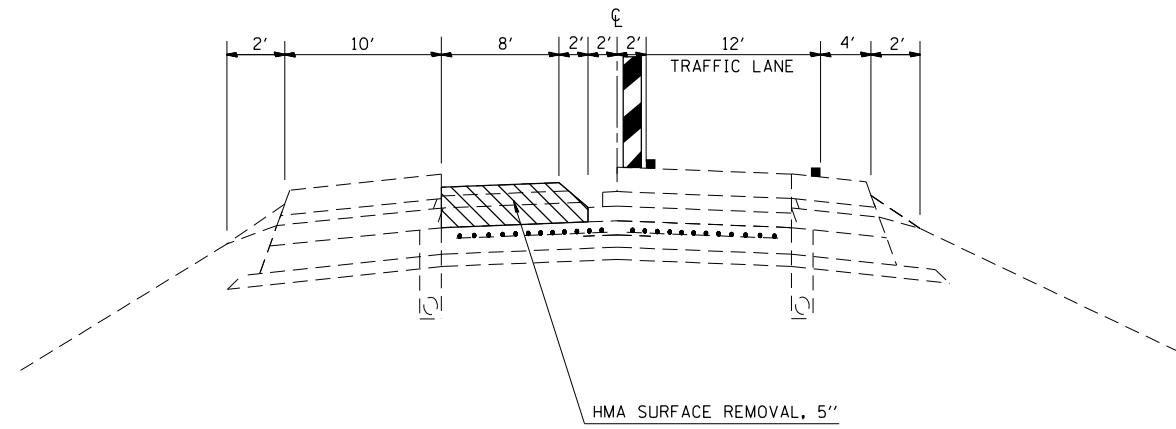
**STATE OF ILLINOIS
DEPARTMENT OF TRANSPORTATION**

STAGING TYPICALS

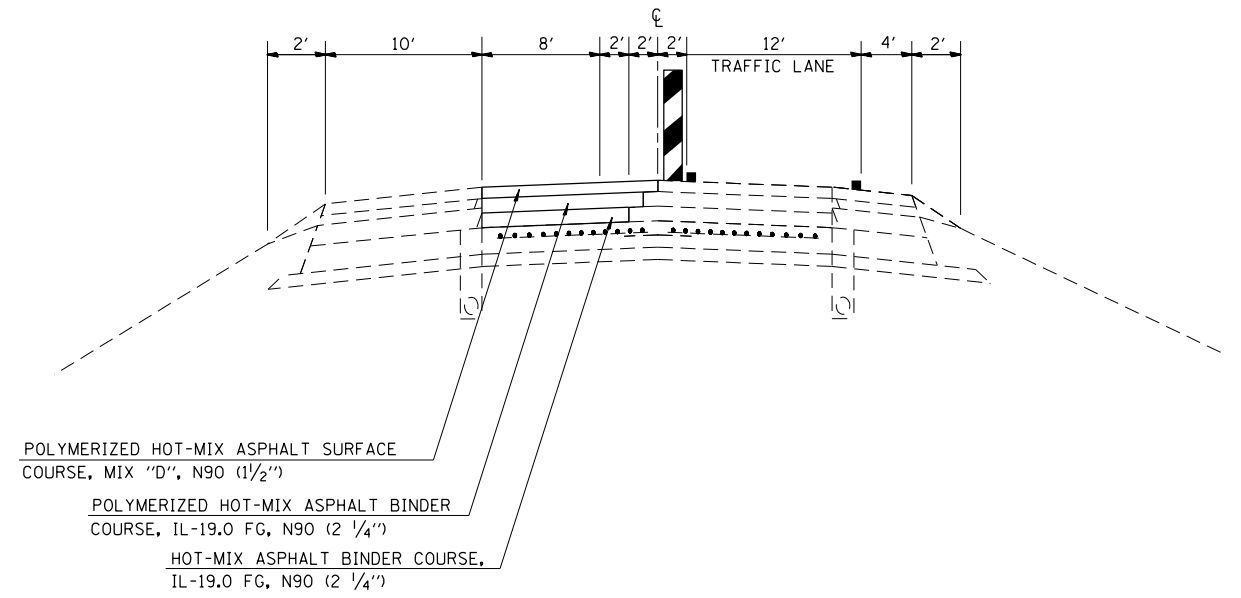
SCALE: N/A SHEET 1 OF 2 SHEETS STA. TO STA.

F.A.I. RTE.	SECTION	COUNTY	TOTAL SHEETS	SHEET NO.
57	(15,18-20),(15-21,22)RS-2	Coles	15	6
CONTRACT NO. 74468				
ILLINOIS FED. AID PROJECT				

STAGE 2A TYPICAL CROSS SECTION
NORTHBOUND LOOKING SOUTH



STAGE 2B TYPICAL CROSS SECTION
NORTHBOUND LOOKING SOUTH



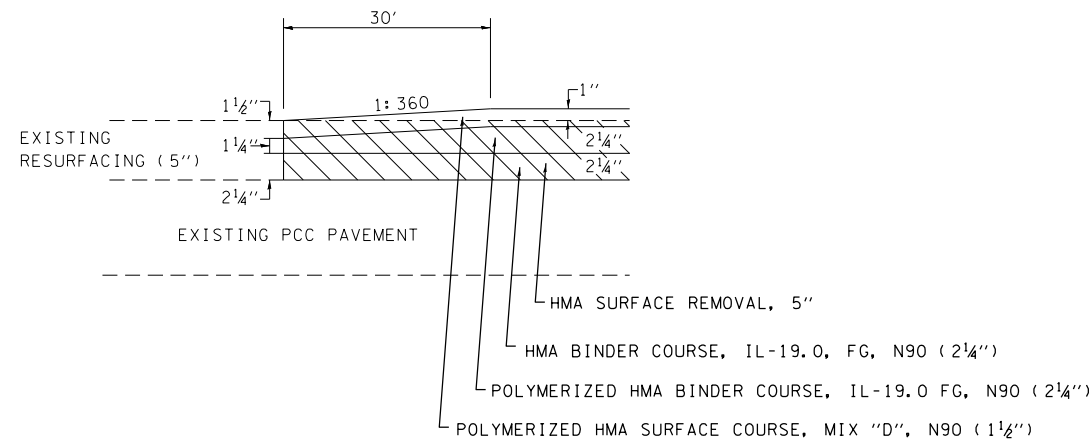
FILE NAME =	USER NAME = steffenmk	DESIGNED -	REVISED -
c:\pw\work\p\dot\stefjenmk\d0186535\074468-sh-typical.dgn		DRAWN -	REVISED -
Default	PLOT SCALE = 100.0000' / in.	CHECKED -	REVISED -
	PLOT DATE = 6/6/2014	DATE -	REVISED -

STATE OF ILLINOIS
DEPARTMENT OF TRANSPORTATION

STAGING TYPICALS

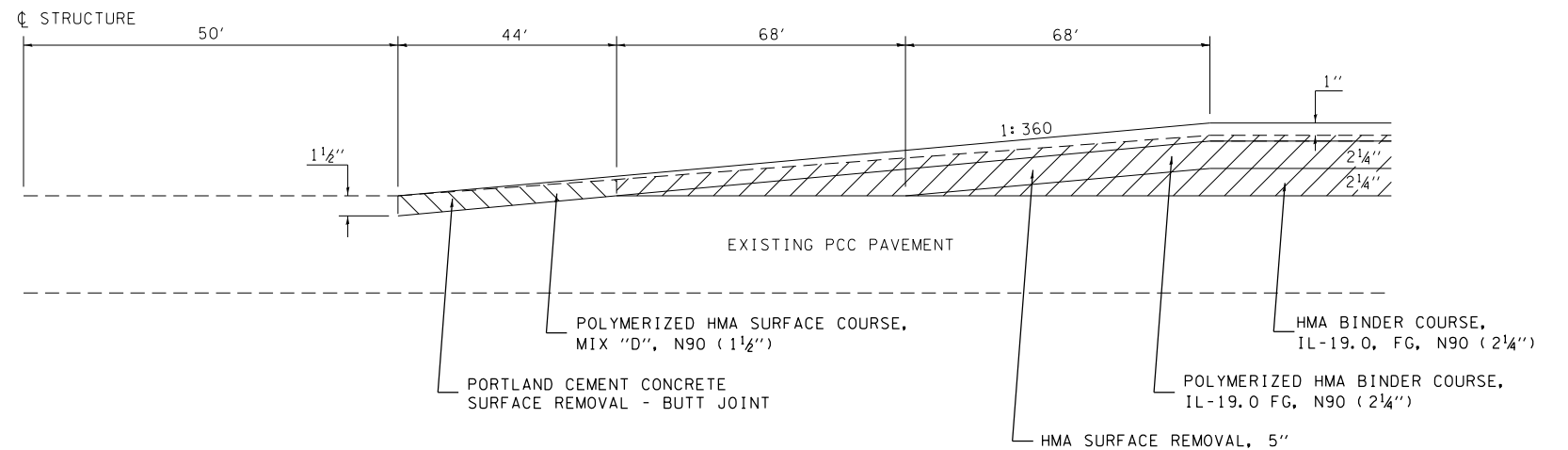
SCALE: N/A SHEET 2 OF 2 SHEETS STA. TO STA.

F.A.I. RTE.	SECTION	COUNTY	TOTAL SHEETS	SHEET NO.
57	(15,18-20),(15-21,22)RS-2	Coles	15	7
CONTRACT NO. 74468			ILLINOIS FED. AID PROJECT	



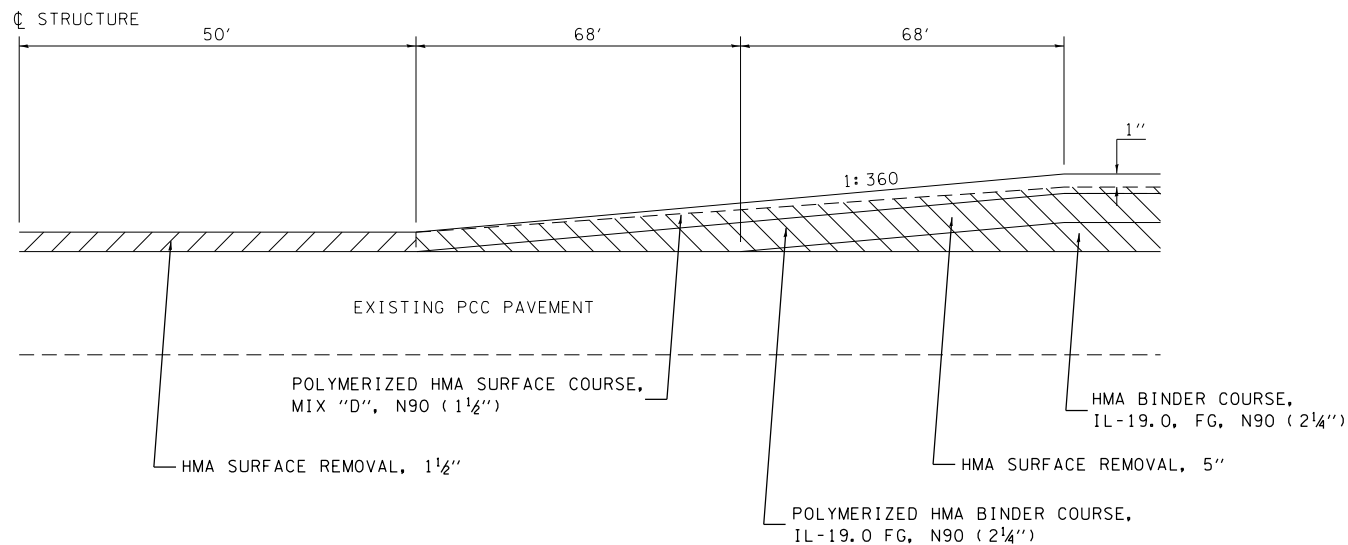
PAVING LIMIT DETAIL

STA 286+89
STA 452+72



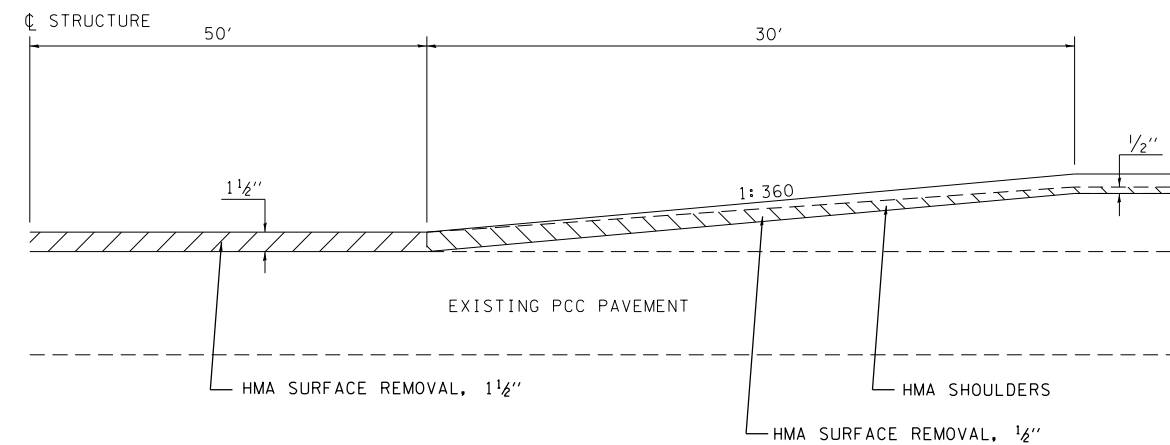
DETAIL FOR OVERHEAD STRUCTURE OMISSIONS

NB I-57 AT SN 015-0050•
•MAINTAIN EXISTING VERTICAL CLEARANCE



DETAIL FOR OVERHEAD STRUCTURE OMISSIONS

NB AND SB I-57 AT SN 015+0037•
SB I-57 AT SN 015-0050•
•MAINTAIN EXISTING VERTICAL CLEARANCE



SHOULDER DETAIL AT OVERHEAD STRUCTURE OMISSIONS

NB AND SB I-57 AT SN 015-0037•
NB AND SB I-57 AT SN 015-0050•
•MAINTAIN EXISTING VERTICAL CLEARANCE

NOTE: DRAWINGS NOT TO SCALE

FILE NAME =	USER NAME = steffenmk	DESIGNED -	REVISED -
c:\pwork\pwork\pwork\steffenmk\d0186535\074468-sh1-detail.dgn		DRAWN -	REVISED -
Default	PLOT SCALE = 100.0000' / 1in.	CHECKED -	REVISED -
	PLOT DATE = 6/6/2014	DATE -	REVISED -

STATE OF ILLINOIS
DEPARTMENT OF TRANSPORTATION

PAVING DETAILS

SCALE: N/A SHEET 1 OF 1 SHEETS STA. TO STA.

F.A.I. RTE.	SECTION	COUNTY	TOTAL SHEETS	SHEET NO.
57	(15,18-20),(15-21,22)RS-2	Coles	15	8
CONTRACT NO. 74468			ILLINOIS FED. AID PROJECT	

GUARDRAIL SCHEDULE

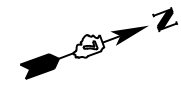
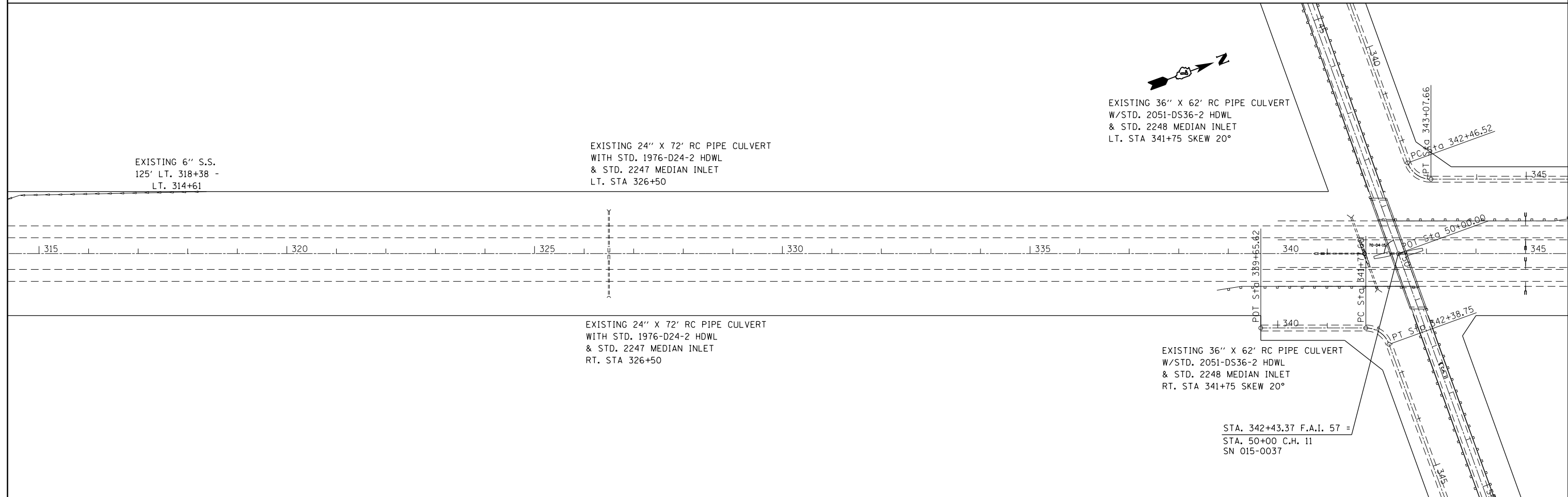
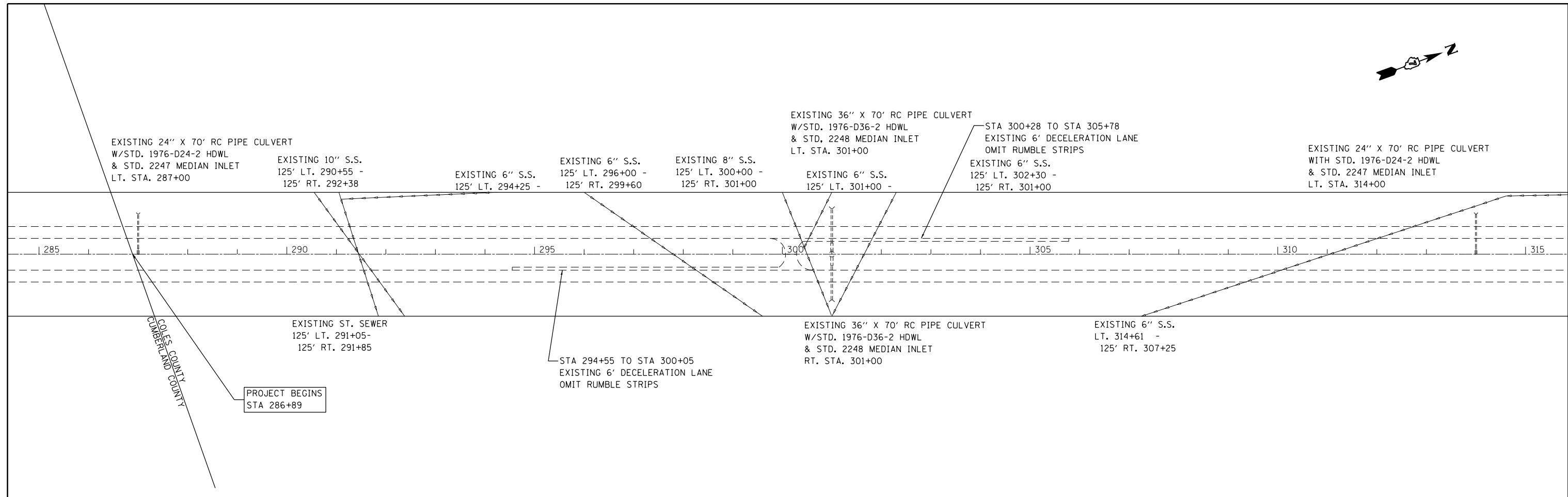
STATION TO STATION				STEEL PLATE BEAM GUARD RAIL, TYPE A, 6 FOOT POSTS	TRAFFIC BARRIER TERMINAL, TYPE 6B	TRAFFIC BARRIER TERMINAL TYPE 1, SPECIAL (TANGENT)	GUARDRAIL REMOVAL	GUARDRAIL MARKER, TYPE A	TERMINAL MARKER - DIRECT APPLIED	
				FT	EACH	EACH	FT	EACH	EACH	
RT STA	339+57	TO	RT STA	342+76	212.5	1	1	313	5	1
LT STA	342+11	TO	LT STA	345+31	212.5	1	1	314	5	1
RT STA	351+93	TO	RT STA	354+43	150	-	2	250	4	2
LT STA	353+69	TO	LT STA	356+19	150	-	2	250	4	2
RT STA	394+78	TO	RT STA	397+28	150	-	2	253	4	2
LT STA	397+44	TO	LT STA	399+94	150	-	2	250	4	2
RT STA	424+51	TO	RT STA	427+70	212.5	1	1	312	5	1
LT STA	427+08	TO	LT STA	430+28	212.5	1	1	315	5	1
RT STA	450+60	TO	RT STA	456+23	462.5	-	2	555	8	2
LT STA	452+50	TO	LT STA	454+38	87.5	-	2	186	4	2
LT STA	457+44	TO	LT STA	459+57	112.5	-	2	211	4	2
TOTALS:					2113	4	18	3209	53	18

RESURFACING SCHEDULE

STATION TO STATION			LENGTH	HOT-MIX ASPHALT SURFACE REMOVAL, 1 1/2"	HOT-MIX ASPHALT SURFACE REMOVAL, 1 1/2"	HOT-MIX ASPHALT SURFACE REMOVAL, 5"	BITUMINOUS MATERIALS (PRIME COAT)	AGGREGATE (PRIME COAT)	HMA BINDER COURSE, IL-19.0 FG, N90	POLYMERIZED HMA BINDER COURSE, IL-19.0 FG, N90	POLYMERIZED HMA SURFACE COURSE, MIX "D", N90	HMA SHOULDERS	MATERIAL TRANSFER DEVICE	SHOULDER RUMBLE STRIPS, 16 INCH	AGGREGATE WEDGE SHOULDER, TYPE B
			FOOT	SQ YD	SQ YD	SQ YD	POUND	TON	TON	TON	TON	TON	TON	TON	FOOT
286+89	TO	427+39	14050	44076	1422	73867	87555	539	9253	9345	6272	3700	24870	55100	889
427+39	TO	481+59	5420	17116	0	28907	33718	208	3642	3642	2428	1438	9713	21680	343
TOTALS:			19470	61192	1422	102774	121273	747	12895	12987	8700	5138	34583	76780	1232

PAVEMENT MARKING SCHEDULE

STATION TO STATION			LENGTH	THERMOPLASTIC PAVEMENT MARKING - LINE 4"	PERFORMED PLASTIC PAVEMENT MARKING, TYPE B - INLAID-LINE-6"	GROOVING FOR RECESSED PAVEMENT MARKING 5"	TEMPORARY PAVEMENT MARKING - LINE 4"	TEMPORARY PAVEMENT MARKING - LINE 6"	SHORT-TERM PAVEMENT MARKING	WORK ZONE PAVEMENT MARKING REMOVAL	PAVEMENT MARKING REMOVAL	RAISED REFLECTIVE PAVEMENT MARKER	DELINEATORS
			FOOT	FOOT	FOOT	FOOT	FOOT	FOOT	FOOT	SQ FT	SQ FT	EACH	EACH
286+89	TO	427+39	14050	56200	7025	56200	56200	7025	15736	1686	22246	703	70
427+39	TO	481+59	5420	21680	2710	21680	21680	2710	6070	650	8582	271	54
TOTALS:			19470	77880	9735	77880	77880	9735	21806	2336	30828	974	124



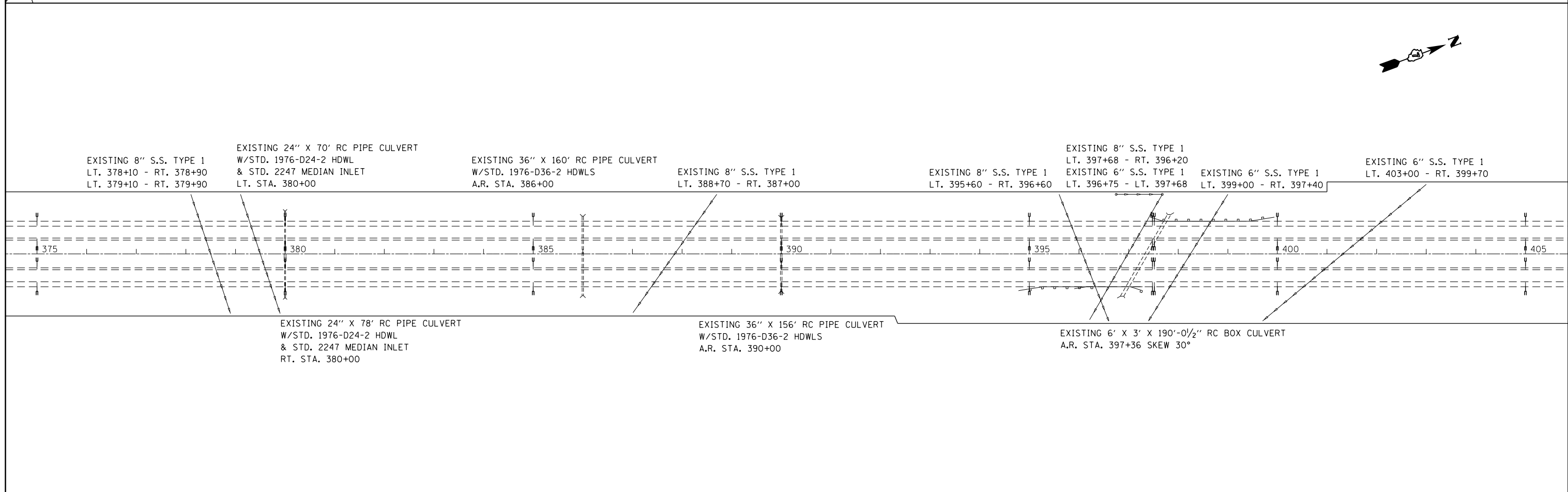
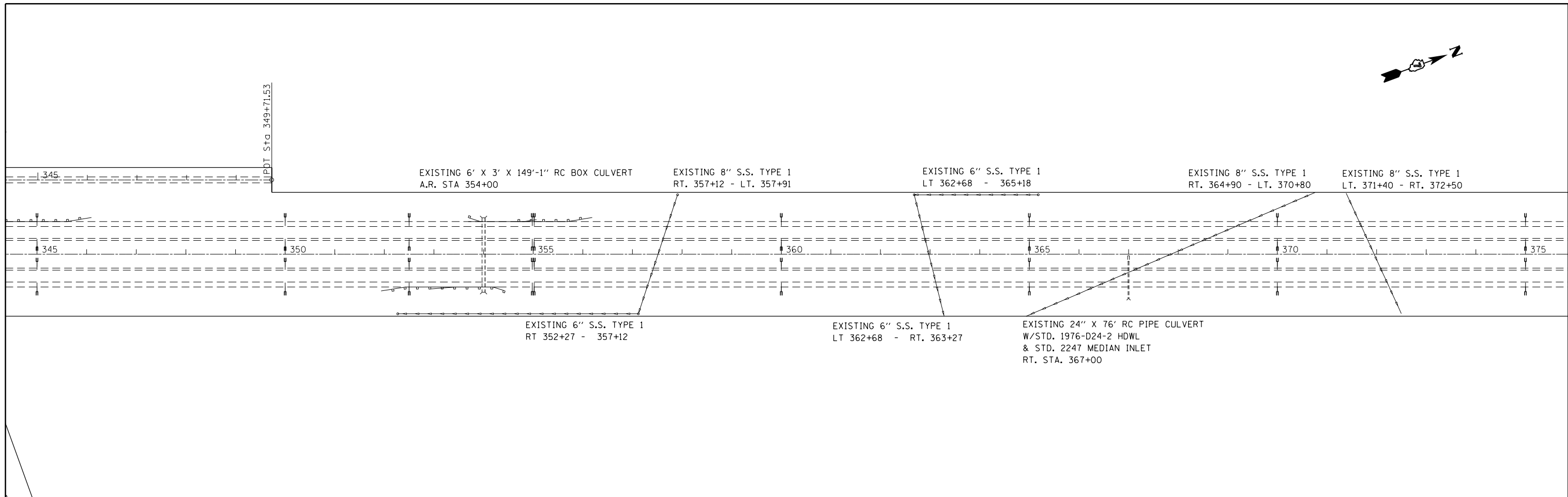
FILE NAME =	USER NAME = steffenmk	DESIGNED -	REVISED -
ci:\pw\work\p\dot\steffenmk\d0186535\074468-shr-plan.dgn		DRAWN -	REVISED -
	PLOT SCALE = 200.0000' / in.	CHECKED -	REVISED -
Default	PLOT DATE = 6/6/2014	DATE -	REVISED -

**STATE OF ILLINOIS
DEPARTMENT OF TRANSPORTATION**

PLAN

SCALE: 100 SHEET 1 OF 4 SHEETS STA. 286+89 TO STA. 345+00

F.A.I. RTE.	SECTION	COUNTY	TOTAL SHEETS	SHEET NO.
57	(15,18-20),(15-21,22)RS-2	Coles	15	10
CONTRACT NO. 74468			ILLINOIS FED. AID PROJECT	

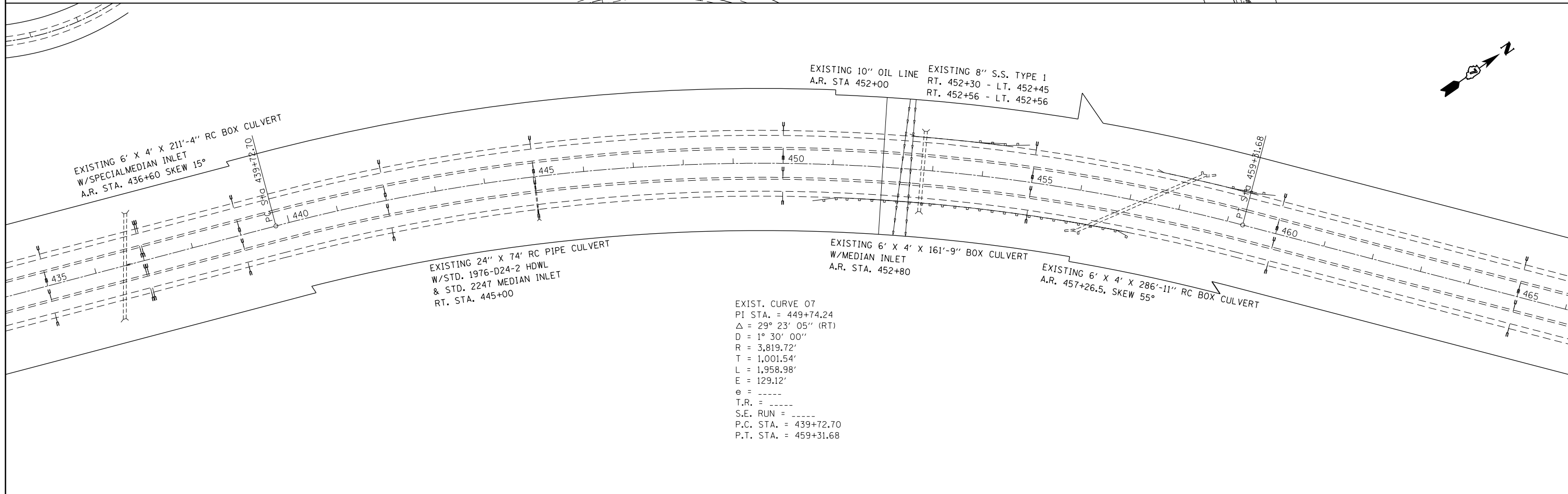
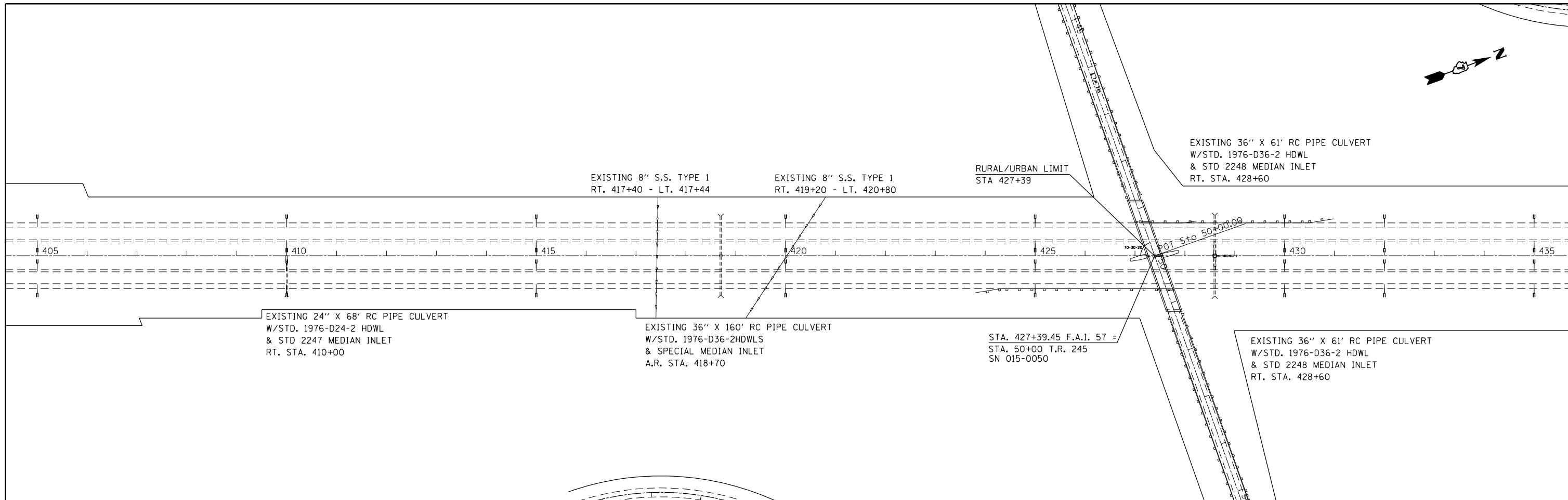


FILE NAME =	USER NAME = steffenmk	DESIGNED -	REVISED -
c:\pw\work\p\dot\steffenmk\d0186535\074468-sh-t-plan.dgn		DRAWN -	REVISED -
	PLOT SCALE = 200.0000' / in.	CHECKED -	REVISED -
Default	PLOT DATE = 6/6/2014	DATE -	REVISED -

STATE OF ILLINOIS
DEPARTMENT OF TRANSPORTATION

PLAN
 SCALE: 100 SHEET 2 OF 4 SHEETS STA. 345+00 TO STA. 405+00

F.A.I. RTE.	SECTION	COUNTY	TOTAL SHEETS	SHEET NO.
57	(15,18-20),(15-21,22)RS-2	Coles	15	11
CONTRACT NO. 74468				
ILLINOIS FED. AID PROJECT				



EXIST. CURVE 07
 PI STA. = 449+74.24
 Δ = 29° 23' 05" (RT)
 D = 1° 30' 00"
 R = 3,819.72'
 T = 1,001.54'
 L = 1,958.98'
 E = 129.12'
 e = ----
 T.R. = ----
 S.E. RUN = ----
 P.C. STA. = 439+72.70
 P.T. STA. = 459+31.68

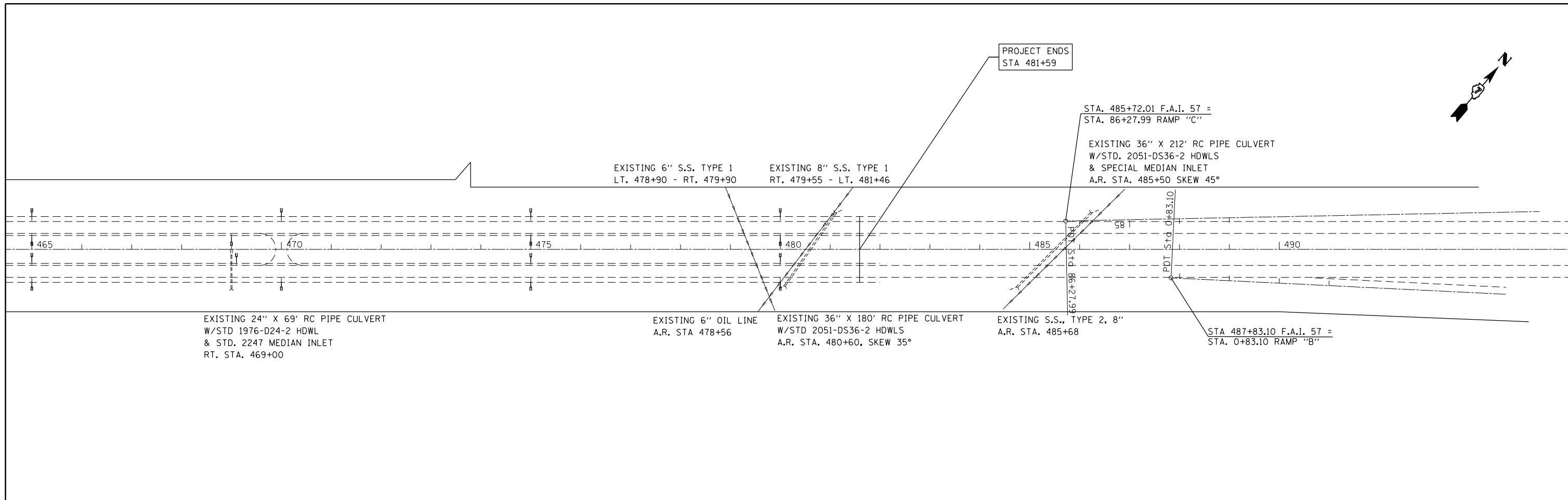
FILE NAME =	USER NAME = steffenmk	DESIGNED -	REVISED -
ci:\pw\work\p\dot\steffenmk\d0186535\074468-sh-t-plan.dgn		DRAWN -	REVISED -
Default	PLOT SCALE = 200.0000' / in.	CHECKED -	REVISED -
	PLOT DATE = 6/6/2014	DATE -	REVISED -

**STATE OF ILLINOIS
 DEPARTMENT OF TRANSPORTATION**

PLAN

SCALE: 100 SHEET 3 OF 4 SHEETS STA. 405+00 TO STA. 466+00

F.A.I. RTE.	SECTION	COUNTY	TOTAL SHEETS	SHEET NO.
57	(15,18-20),(15-21,22)RS-2	Coles	15	12
CONTRACT NO. 74468			ILLINOIS FED. AID PROJECT	

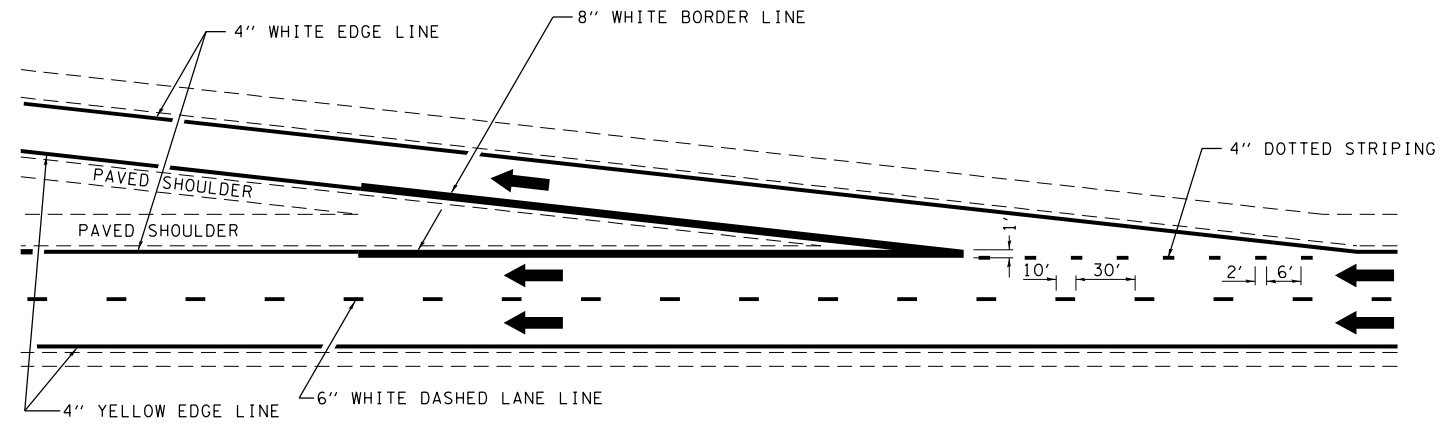


FILE NAME =	USER NAME = steffenmk	DESIGNED -	REVISED -
ci:\pw\work\p\dot\steffenmk\d0186535\0774468-sh-t-plan.dgn		DRAWN -	REVISED -
	PLOT SCALE = 200.0000' / in.	CHECKED -	REVISED -
Default	PLOT DATE = 6/6/2014	DATE -	REVISED -

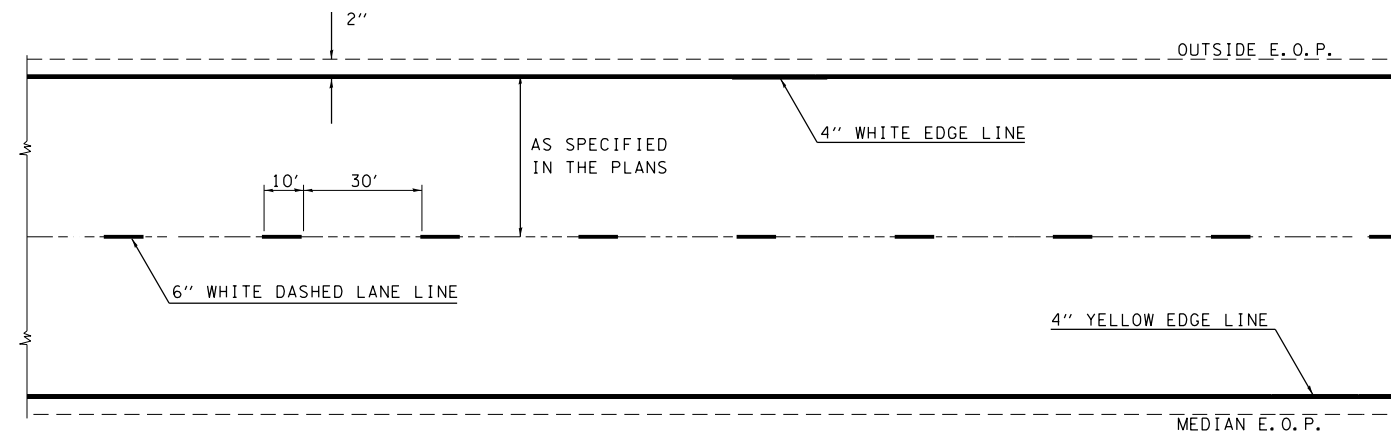
**STATE OF ILLINOIS
DEPARTMENT OF TRANSPORTATION**

PLAN			
SCALE: 100	SHEET 4	OF 4	SHEETS
STA. 465+00		TO STA. 481+59	

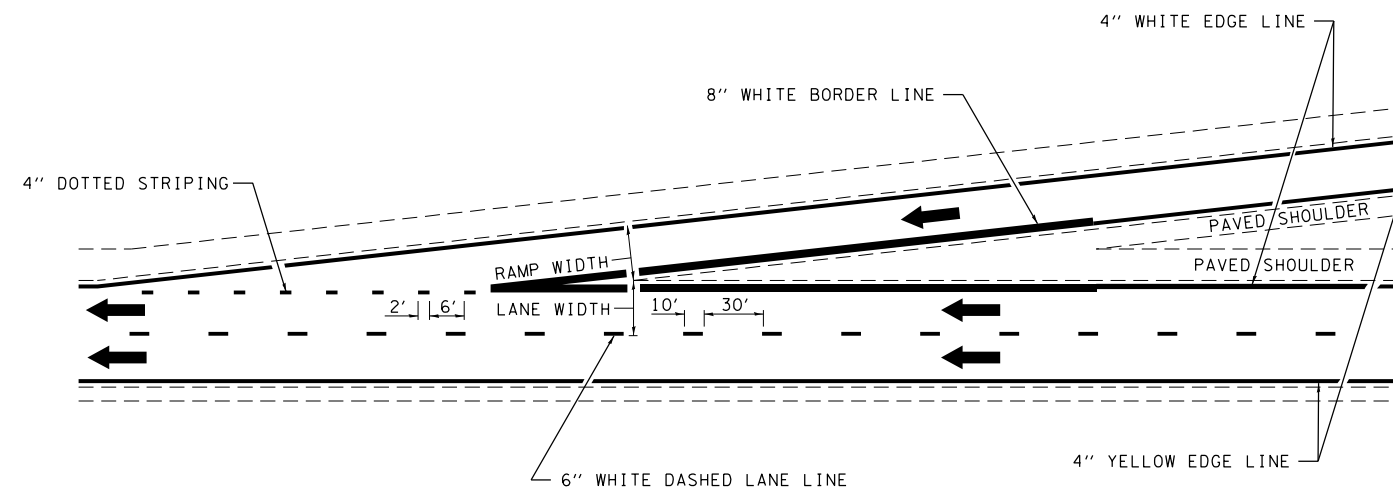
F.A.I. RTE.	SECTION	COUNTY	TOTAL SHEETS	SHEET NO.
57	(15,18-20),(15-21,22)RS-2	Coles	15	13
CONTRACT NO. 74468				
ILLINOIS FED. AID PROJECT				



TYPICAL EXIT RAMP MARKING



TYPICAL CENTERLINE & EDGELINE MARKINGS



TYPICAL ENTRANCE RAMP MARKING

NOT TO SCALE

DISTRICT 7 DETAIL NO. 7800002

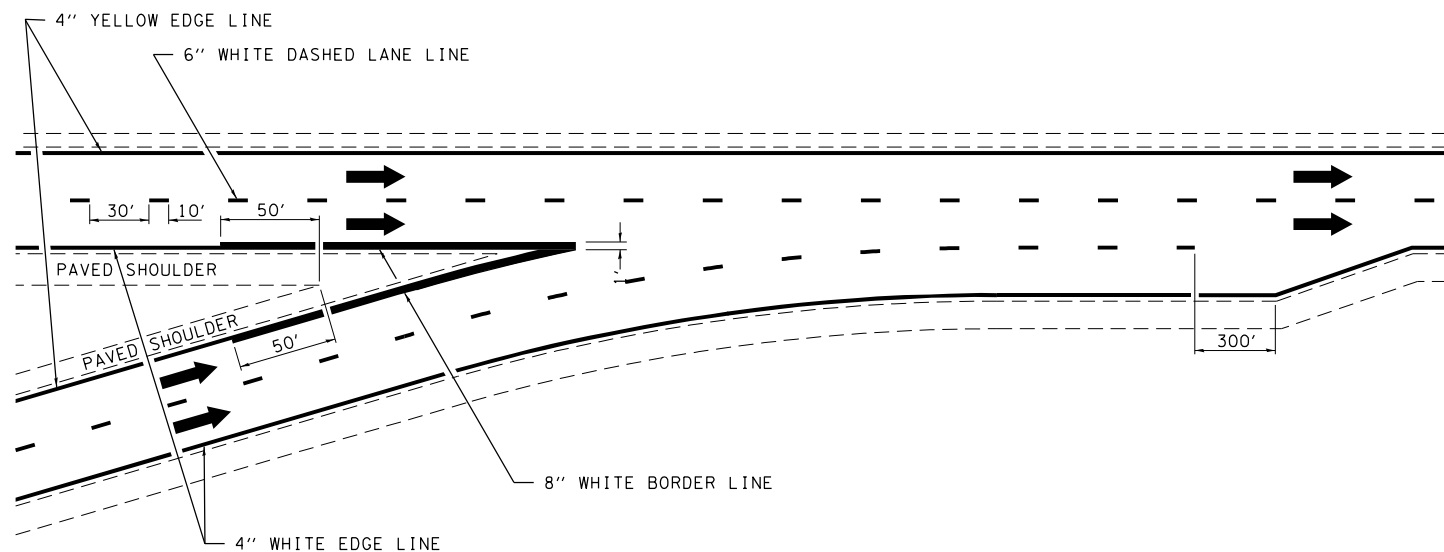
FILE NAME =	USER NAME = steffenmk	DESIGNED -	REVISED -
c:\pwork\pwork\stevfenmk\d0186535\074468-sh1-detail.dgn		DRAWN -	REVISED -
Default	PLOT SCALE = 100.0000' / in.	CHECKED -	REVISED -
	PLOT DATE = 6/6/2014	DATE -	REVISED -

**STATE OF ILLINOIS
DEPARTMENT OF TRANSPORTATION**

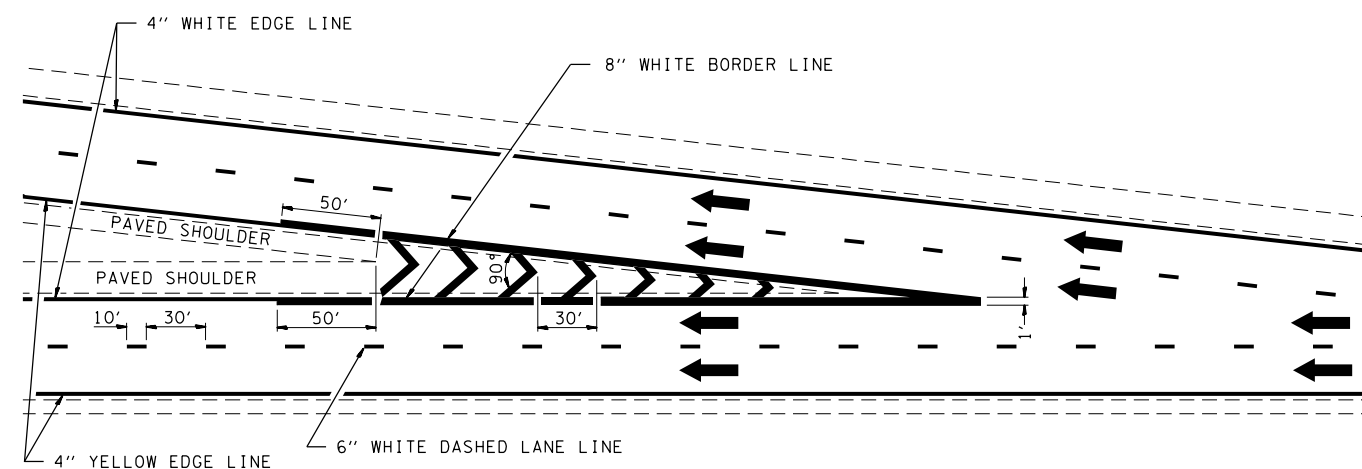
TYPICAL APPLICATIONS OF INTERSTATE PAVEMENT MARKING

SCALE: N/A SHEET 1 OF 2 SHEETS STA. TO STA.

F.A.I. RTE.	SECTION	COUNTY	TOTAL SHEETS	SHEET NO.
57	(15,18-20),(15-21,22)RS-2	Coles	15	14
CONTRACT NO. 74468			ILLINOIS FED. AID PROJECT	

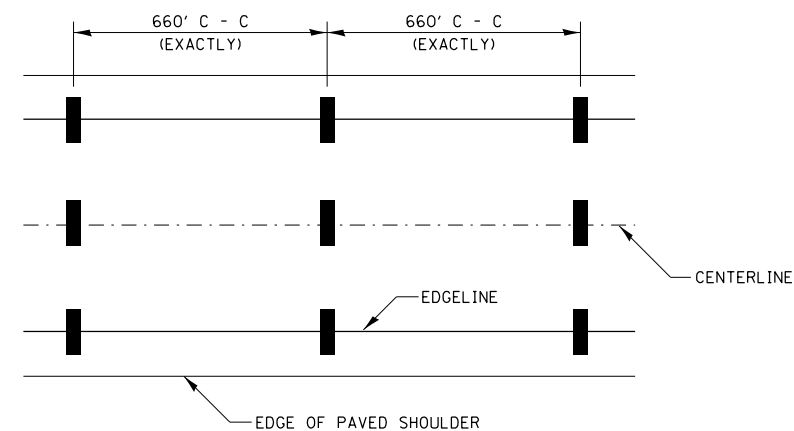


TYPICAL CONVERGENCE MARKING

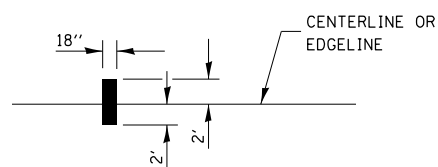


TYPICAL DIVERGENCE MARKING

AERIAL SPEED CHECK ZONES



IT WILL BE NECESSARY TO HAVE A REPRESENTATIVE OF THE STATE POLICE PRESENT SO THAT THE ACCURACY OF MEASUREMENT CAN BE ATTESTED TO IN COURT.



NOT TO SCALE

FILE NAME =	USER NAME = steffenmk	DESIGNED -	REVISED -
ci:\pw\work\p\idot\steffenmk\d0186535\074468-sh1-detail.dgn	74468-sh1-detail.dgn	DRAWN -	REVISED -
Default	PLOT SCALE = 100.0000' / in.	CHECKED -	REVISED -
	PLOT DATE = 6/6/2014	DATE -	REVISED -

STATE OF ILLINOIS
DEPARTMENT OF TRANSPORTATION

TYPICAL APPLICATIONS OF INTERSTATE PAVEMENT MARKING

SCALE: N/A SHEET 2 OF 2 SHEETS STA. TO STA.

DISTRICT 7 DETAIL NO. 7800002

F.A.I. RTE.	SECTION	COUNTY	TOTAL SHEETS	SHEET NO.
57	(15,18-20),(15-21,22)RS-2	Coles	15	15
CONTRACT NO. 74468			ILLINOIS FED. AID PROJECT	