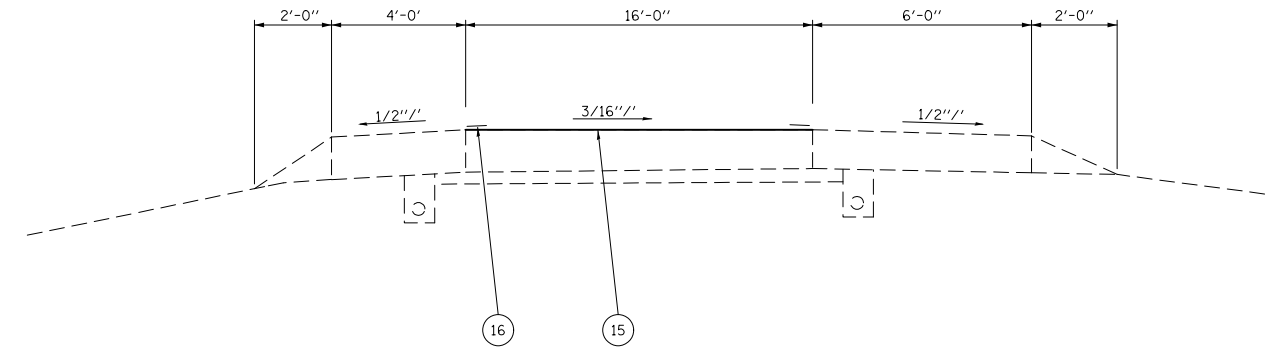


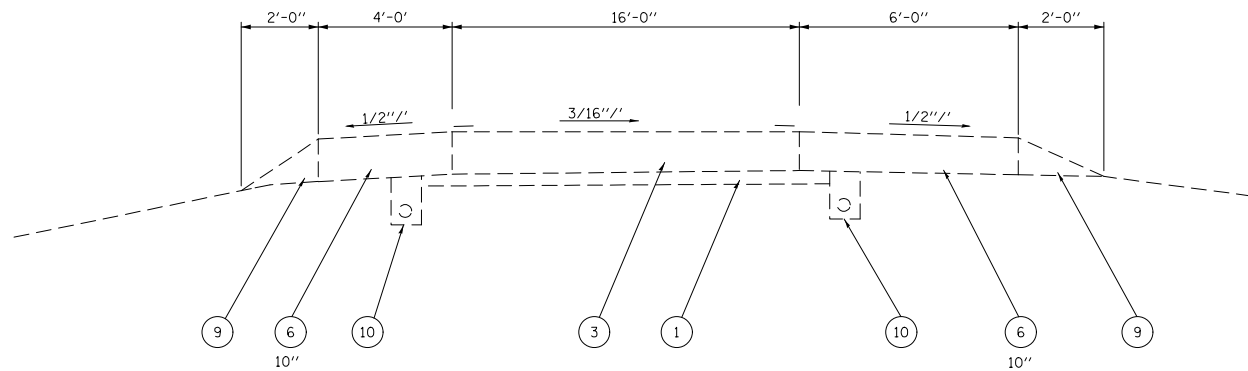
EXISTING TYPICAL
LOCATION 3
NB I-255 TO EB I-64
RAMP H
STA. 7+00 TO STA. 26+00



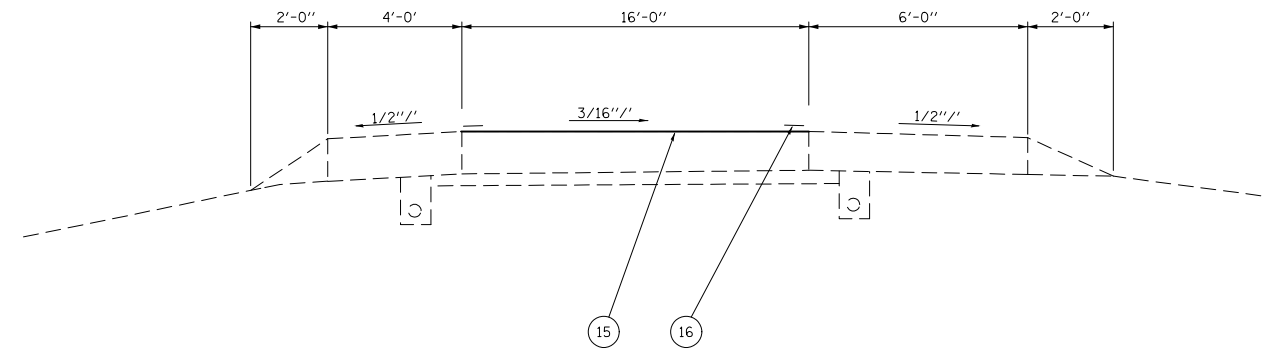
PROPOSED TYPICAL
LOCATION 3
NB I-255 TO EB I-64
RAMP H
STA. 7+00 TO STA. 26+00

LEGEND

- ① EXISTING STABILIZED SUB-BASE, 4"
- ② EXISTING SUB-BASE GRANULAR MATERIAL TYPE A, 6"
- ③ EXISTING PCC PAVEMENT, 10"
- ④ EXISTING HMA PAVEMENT
- ⑤ EXISTING STABILIZED SHOULDER
- ⑥ EXISTING HMA SHOULDER
- ⑦ EXISTING HMA CONCRETE OVERLAY, ±4.25"
- ⑧ EXISTING POLYMERIZED HMA OVERLAY
- ⑨ EXISTING AGGREGATE SHOULDERS, TYPE B
- ⑩ EXISTING PIPE UNDERDRAINS
- ⑪ EXISTING THERMOPLASTIC PAVEMENT MARKING - LINE, 4"
- ⑫ EXISTING PREFORMED PLASTIC PAVEMENT MARKING, TYPE B, SPECIAL, 4"
- ⑬ EXISTING PREFORMED PLASTIC PAVEMENT MARKING, TYPE B - INLAID, 4"
- ⑭ EXISTING PAINT PAVEMENT MARKING - LINE, 4"
- ⑮ PROPOSED HIGH-FRICTION SURFACE TREATMENT
- ⑯ PROPOSED THERMOPLASTIC PAVEMENT MARKING - LINE, 4"



EXISTING TYPICAL
LOCATION 4
NB I-255 TO EB IL 15
RAMP E
STA. 8+00 TO STA. 24+00



PROPOSED TYPICAL
LOCATION 4
NB I-255 TO EB IL 15
RAMP E
STA. 8+00 TO STA. 24+00

*MADISON & ST. CLAIR

FILE NAME =	USER NAME = conoverpj	DESIGNED -	REVISED -
et:\pw\work\p\dot\conoverpj\d0387434\d076h20-sh-t-typical.dgn		DRAWN -	REVISED -
	PLOT SCALE = 100.0000' / 1in.	CHECKED -	REVISED -
	PLOT DATE = 5/7/2014	DATE -	REVISED -

STATE OF ILLINOIS
DEPARTMENT OF TRANSPORTATION

TYPICAL SECTIONS
LOCATIONS 3 & 4

SCALE: SHEET NO. 2 OF 2 SHEETS STA. TO STA.

F.A. RTE.	SECTION	COUNTY	TOTAL SHEETS	SHEET NO.
VAR	DIST 8 HFST 2015-1	*	27	6
FED. ROAD DIST. NO. ILLINOIS FED. AID PROJECT			CONTRACT NO. 76H20	