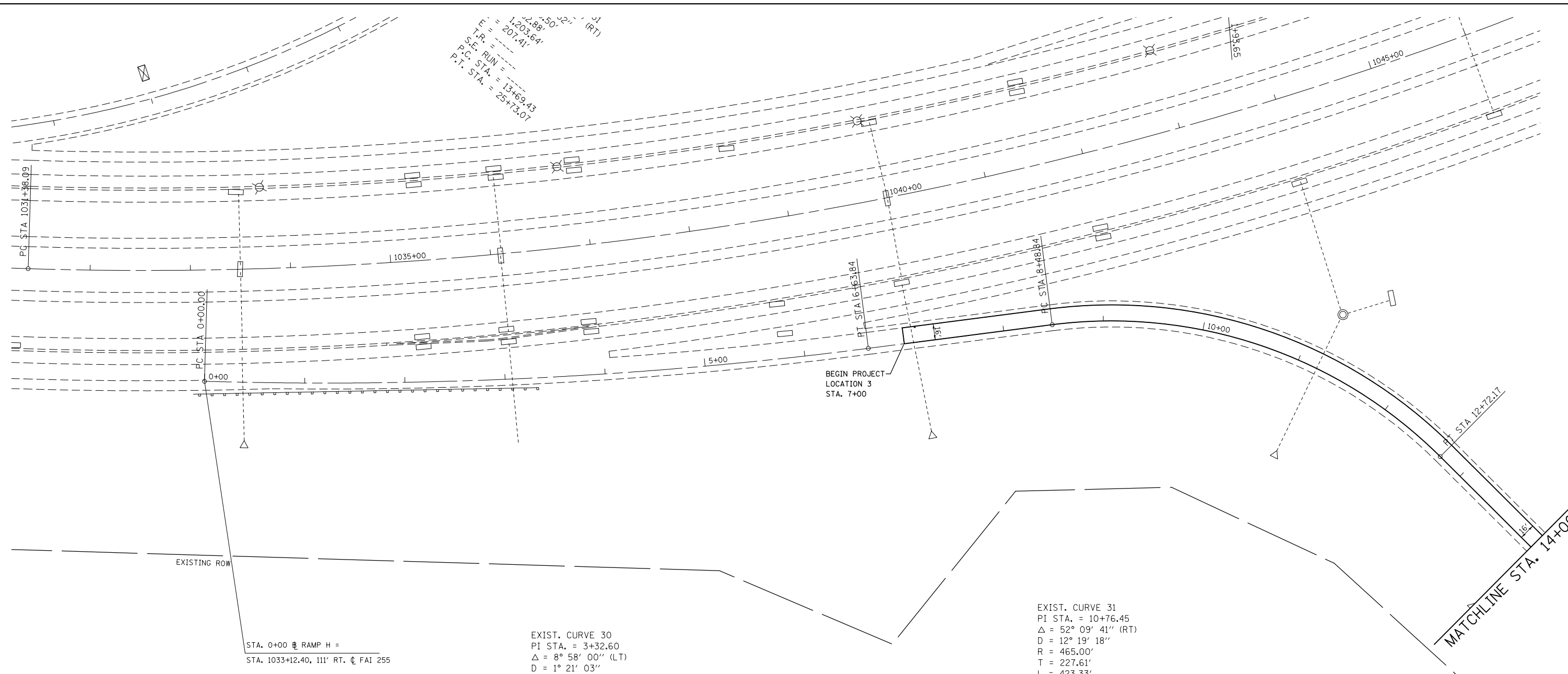


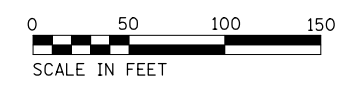
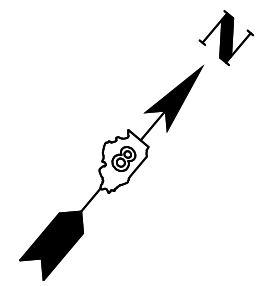
P.S.T.M. = 1203.64  
 P.S.E. RUN = 207.41  
 P.C. STA. = 13+69.43  
 P.T. STA. = 25+73.07



STA. 0+00 RAMP H =  
 STA. 1033+12.40, 111' RT.  $\phi$  FAI 255

**EXIST. CURVE 30**  
 PI STA. = 3+32.60  
 $\Delta = 8^\circ 58' 00''$  (LT)  
 $D = 1^\circ 21' 03''$   
 $R = 4,241.85'$   
 $T = 332.60'$   
 $L = 663.84'$   
 $E = 13.02'$   
 $E = \text{-----}$   
 $T.R. = \text{-----}$   
 $S.E. \text{ RUN} = \text{-----}$   
 $P.C. \text{ STA.} = 0+00.00$   
 $P.T. \text{ STA.} = 6+63.84$

**EXIST. CURVE 31**  
 PI STA. = 10+76.45  
 $\Delta = 52^\circ 09' 41''$  (RT)  
 $D = 12^\circ 19' 18''$   
 $R = 465.00'$   
 $T = 227.61'$   
 $L = 423.33'$   
 $E = 52.72'$   
 $E = \text{-----}$   
 $T.R. = \text{-----}$   
 $S.E. \text{ RUN} = \text{-----}$   
 $P.C. \text{ STA.} = 8+48.84$   
 $P.T. \text{ STA.} = 12+72.17$



FILE NAME =	USER NAME = conoverpj	DESIGNED -	REVISED -
et:\pw\work\p\dot\conoverpj\d0387434\d076h20-sh-t-plan.dgn		DRAWN -	REVISED -
	PLOT SCALE = 100.0000' / in.	CHECKED -	REVISED -
	PLOT DATE = 5/7/2014	DATE -	REVISED -

**STATE OF ILLINOIS**  
**DEPARTMENT OF TRANSPORTATION**

**PLAN SHEET**  
**LOCATION 3**  
 SCALE: 1" = 50'    SHEET NO. 1 OF 2 SHEETS    STA. 7+00 TO STA. 14+00

F.A. RTE.	SECTION	COUNTY	TOTAL SHEETS	SHEET NO.
VAR	DIST 8 HFST 2015-1	*	27	12
FED. ROAD DIST. NO.			ILLINOIS FED. AID PROJECT	
CONTRACT NO. 76H20				

\*MADISON & ST. CLAIR