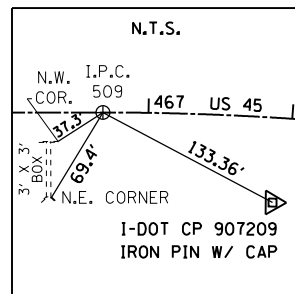
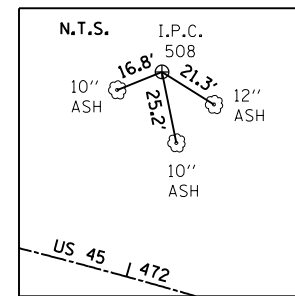


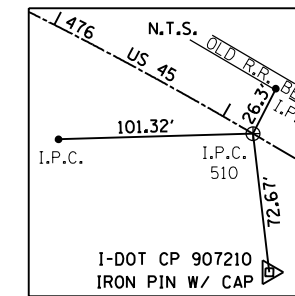
P.O.T. STA. 458+45.08 (BACK)  $\odot$  U.S. 45  
 N. 419,762.6886  
 E. 957,211.0582  
 P.O.T. STA. 458+45.08 (AHEAD)  $\odot$  U.S. 45  
 N. 419,762.3453  
 E. 957,174.0598



P.C. STA. 466+68.38  $\odot$  U.S. 45  
 N. 420,585.6141  
 E. 957,166.4208



P.I. STA. 472+05.92  $\odot$  U.S. 45  
 N. 421,123.1339  
 E. 957,161.4332



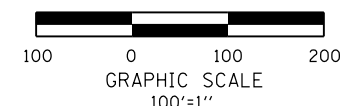
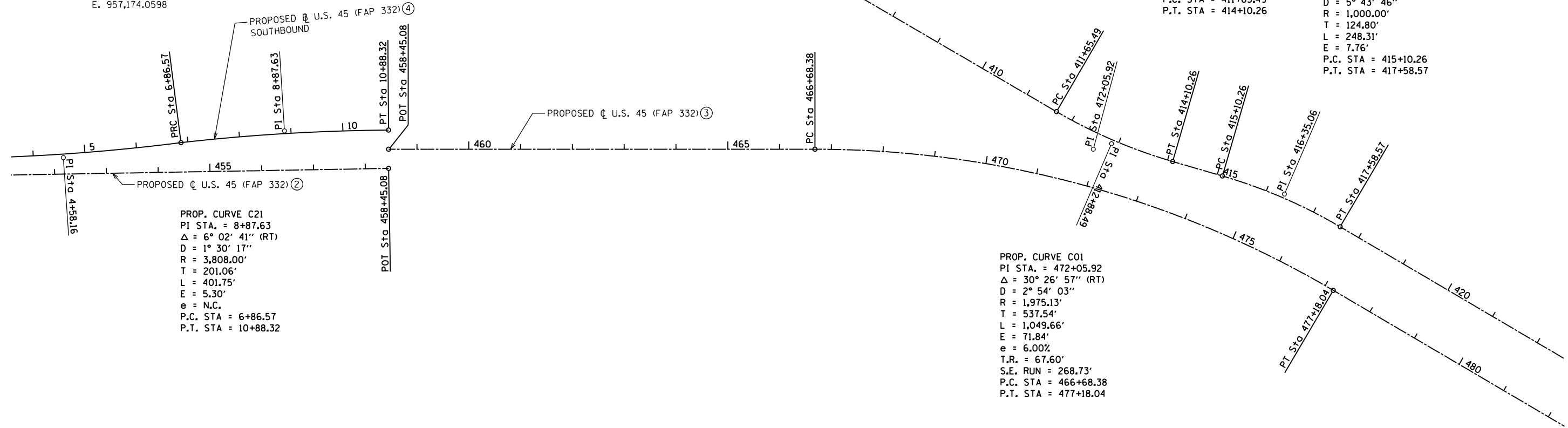
P.T. STA. 477+18.04  $\odot$  U.S. 45  
 N. 421,589.0459  
 E. 957,429.5348

PROP. CURVE BPCUR1  
 PI STA. = 412+88.49  
 $\Delta$  = 14° 01' 27" (LT)  
 D = 5° 43' 46"  
 R = 1,000.00'  
 T = 123.00'  
 L = 244.77'  
 E = 7.54'  
 P.C. STA = 411+65.49  
 P.T. STA = 414+10.26

PROP. CURVE BPCUR2  
 PI STA. = 416+35.06  
 $\Delta$  = 14° 13' 38" (RT)  
 D = 5° 43' 46"  
 R = 1,000.00'  
 T = 124.80'  
 L = 248.31'  
 E = 7.76'  
 P.C. STA = 415+10.26  
 P.T. STA = 417+58.57

PROP. CURVE C21  
 PI STA. = 8+87.63  
 $\Delta$  = 6° 02' 41" (RT)  
 D = 1° 30' 17"  
 R = 3,808.00'  
 T = 201.06'  
 L = 401.75'  
 E = 5.30'  
 e = N.C.  
 P.C. STA = 6+86.57  
 P.T. STA = 10+88.32

PROP. CURVE C01  
 PI STA. = 472+05.92  
 $\Delta$  = 30° 26' 57" (RT)  
 D = 2° 54' 03"  
 R = 1,975.13'  
 T = 537.54'  
 L = 1,049.66'  
 E = 71.84'  
 e = 6.00%  
 T.R. = 67.60'  
 S.E. RUN = 268.73'  
 P.C. STA = 466+68.38  
 P.T. STA = 477+18.04



$\oplus$  \*REFER TO ALIGNMENT & CURVE DATA SHEETS (TYP.)

FILE NAME =	USER NAME = bemery	DESIGNED -	REVISED -	<b>STATE OF ILLINOIS DEPARTMENT OF TRANSPORTATION</b>	<b>ALIGNMENTS &amp; TIES</b>			F.A.P. RTE.	SECTION	COUNTY	TOTAL SHEETS	SHEET NO.
P:\Projects\2011 Projects\11297 - IDOT US 45 Ph2\CV\CADD Sheets\0978077-sht-ATB-Ties.dwg		DRAWN -	REVISED -		<b>U.S. 45</b>			332	(29,30)R-1	SALINE	745	69
Default		CHECKED -	REVISED -		SCALE: 100'=1"    SHEET 3 OF 11 SHEETS    STA.    TO STA.			CONTRACT NO. 78077				
		DATE -	REVISED -		ILLINOIS FED. AID PROJECT							