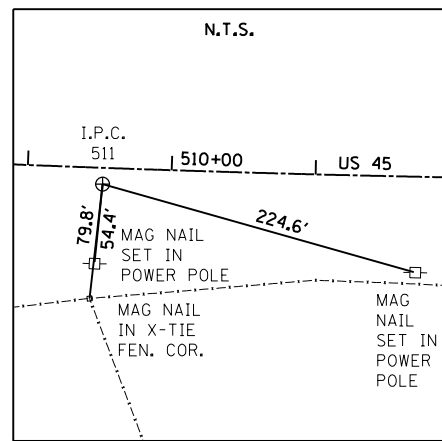
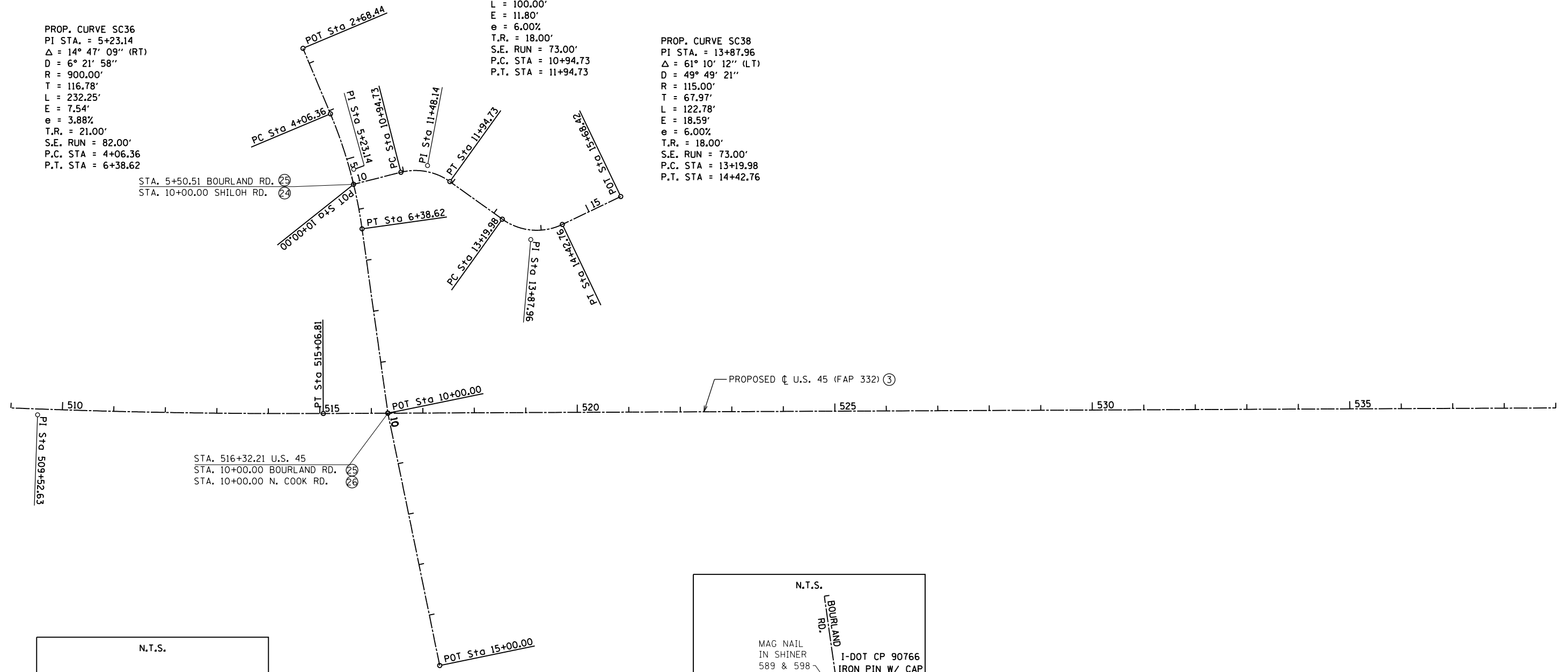




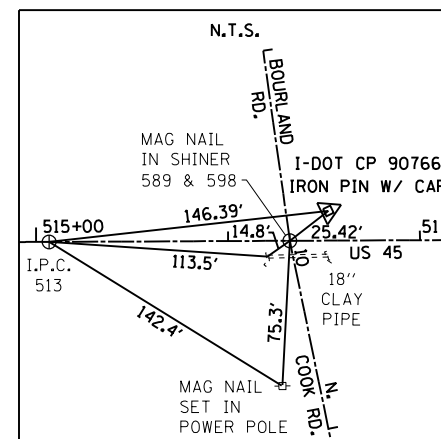
PROP. CURVE SC36
 PI STA. = 5+23.14
 $\Delta = 14^\circ 47' 09''$ (RT)
 $D = 6^\circ 21' 58''$
 $R = 900.00'$
 $T = 116.78'$
 $L = 232.25'$
 $E = 7.54'$
 $e = 3.88\%$
 $T.R. = 21.00'$
 $S.E. RUN = 82.00'$
 $P.C. STA = 4+06.36$
 $P.T. STA = 6+38.62$

PROP. CURVE SC37
 PI STA. = 11+48.14
 $\Delta = 49^\circ 49' 21''$ (RT)
 $D = 49^\circ 49' 21''$
 $R = 115.00'$
 $T = 53.41'$
 $L = 100.00'$
 $E = 11.80'$
 $e = 6.00\%$
 $T.R. = 18.00'$
 $S.E. RUN = 73.00'$
 $P.C. STA = 10+94.73$
 $P.T. STA = 11+94.73$

PROP. CURVE SC38
 PI STA. = 13+87.96
 $\Delta = 61^\circ 10' 12''$ (LT)
 $D = 49^\circ 49' 21''$
 $R = 115.00'$
 $T = 67.97'$
 $L = 122.78'$
 $E = 18.59'$
 $e = 6.00\%$
 $T.R. = 18.00'$
 $S.E. RUN = 73.00'$
 $P.C. STA = 13+19.98$
 $P.T. STA = 14+42.76$

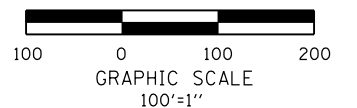


P.I. STA. 509+52.63 \oslash U.S. 45
 N. 424,392.6029
 E. 959,042.7973



P.T. STA. 515+06.81 \oslash U.S. 45
 N. 424,894.4317
 E. 959,279.3742
 P.O.T. STA. 10+00.00 \oslash BOURLAND RD.
 STA. 516+32.21 \oslash U.S. 45
 P.O.T. STA. 10+00.00 \oslash N. COOK RD.
 N. 425,007.8537
 E. 959,332.8447

⊕ REFER TO ALIGNMENT & CURVE DATA SHEETS (TYP.)



FILE NAME =	USER NAME = bemory	DESIGNED -	REVISED -
P:\Projects\2011 Projects\11297 - IDOT US 45 Ph2\CV\CADD Sheets\0978077-sht-ATB-Ties.dwg		DRAWN -	REVISED -
Default	PLOT SCALE = 200.0000' / in.	CHECKED -	REVISED -
	PLOT DATE = 4/30/2014	DATE -	REVISED -

**STATE OF ILLINOIS
 DEPARTMENT OF TRANSPORTATION**

ALIGNMENTS & TIES			
U.S. 45, BOURLAND RD. & N. COOK RD.			
SCALE: 100'=1"	SHEET 5	OF 11 SHEETS	STA. TO STA.

F.A.P. RTE.	SECTION	COUNTY	TOTAL SHEETS	SHEET NO.
332	(29,30)R-1	SALINE	745	71
CONTRACT NO. 78077				
ILLINOIS FED. AID PROJECT				