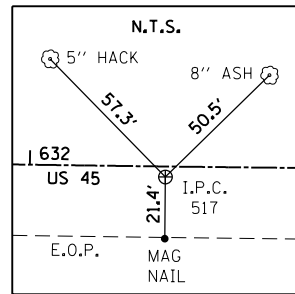
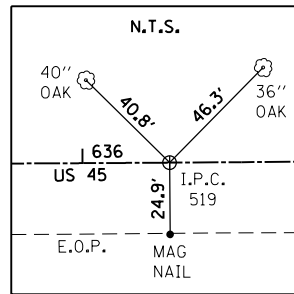


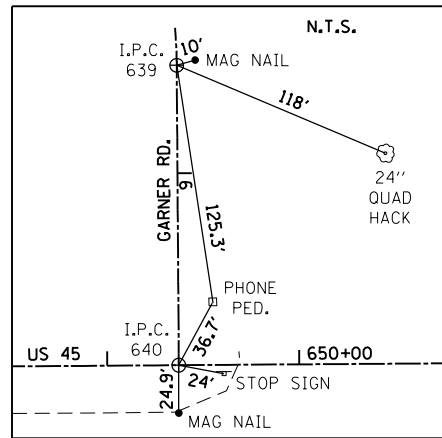
P.C. STA. 628+64.09 \oslash U.S. 45
 N. 435,157.0323
 E. 964,143.4567



P.I. STA. 632+47.21 \oslash U.S. 45
 N. 435,497.0978
 E. 964,319.9129



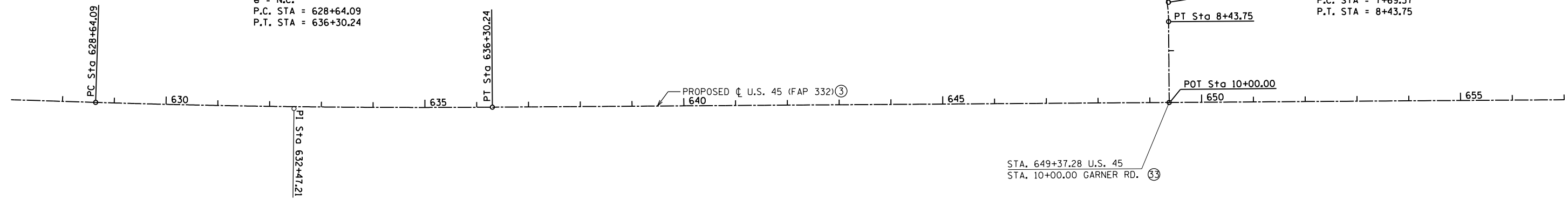
P.T. STA. 636+30.24 \oslash U.S. 45
 N. 435,843.6386
 E. 964,483.2862



P.O.T. STA. 10+00.00 \oslash GARNER RD.
 STA. 649+37.28 \oslash U.S. 45
 N. 437,025.8872
 E. 965,040.6429
 P.T. STA. 8+43.75 \oslash GARNER RD.
 N. 437,092.5182
 E. 964,899.3070

PROP. CURVE C04
 PI STA. = 632+47.21
 Δ = 2° 11' 00" (LT)
 D = 0° 17' 06"
 R = 20,106.61'
 T = 383.12'
 L = 766.15'
 E = 3.65'
 e = N.C.
 P.C. STA = 628+64.09
 P.T. STA = 636+30.24

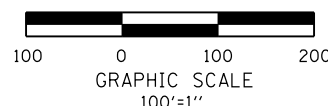
PROP. CURVE SC47
 PI STA. = 8+06.82
 Δ = 16° 42' 40" (RT)
 D = 22° 28' 08"
 R = 255.00'
 T = 37.45'
 L = 74.37'
 E = 2.74'
 e = 4.80%
 T.R. = 18.00'
 S.E. RUN = 73.00'
 P.C. STA = 7+69.37
 P.T. STA = 8+43.75



NO TIES AVAILABLE FOR THE FOLLOWING ALIGNMENT POINTS:

- P.O.T. STA. 5+50.00 \oslash GARNER RD.
 N. 437,146.5823
 E. 964,611.4466
- P.C. STA. 7+69.37 \oslash GARNER RD.
 N. 437,114.0444
 E. 964,828.3908
- P.I. STA. 8+06.82 \oslash GARNER RD.
 N. 437,108.4893
 E. 964,865.4297

⊕ •REFER TO ALIGNMENT & CURVE DATA SHEETS (TYP.)



FILE NAME =	USER NAME = bemory	DESIGNED -	REVISED -
P:\Projects\2011 Projects\11297 - IDOT US 45 Ph2\CV\CADD Sheets\0978077-sht-ATB-Ties.dwg		DRAWN -	REVISED -
Default	PLOT SCALE = 200.0000' / in.	CHECKED -	REVISED -
	PLOT DATE = 4/30/2014	DATE -	REVISED -

**STATE OF ILLINOIS
 DEPARTMENT OF TRANSPORTATION**

**ALIGNMENTS & TIES
 U.S. 45 & GARNER RD.**

SCALE: 100'=1" SHEET 9 OF 11 SHEETS STA. TO STA.

F.A.P. RTE.	SECTION	COUNTY	TOTAL SHEETS	SHEET NO.
332	(29,30)R-1	SALINE	745	75
CONTRACT NO. 78077				
ILLINOIS FED. AID PROJECT				