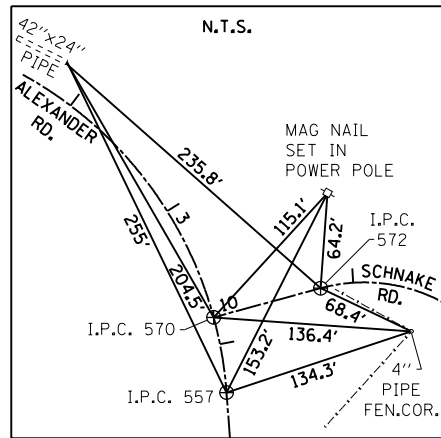
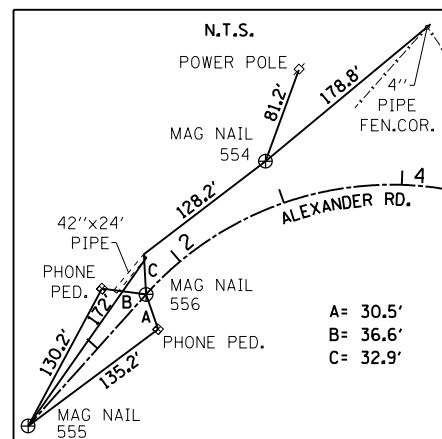


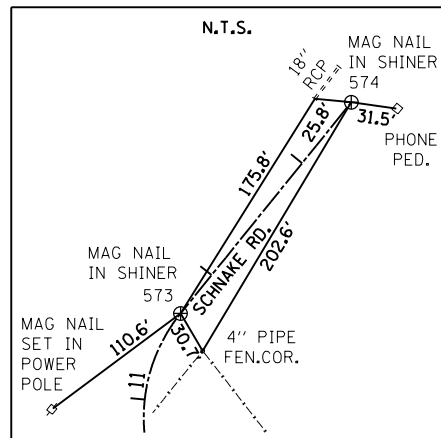
P.C. STA. 6+78.60 \perp ALEXANDER RD.
 N. 422,232.9580
 E. 957,434.3258
 P.I. STA. 7+42.94 \perp ALEXANDER RD.
 N. 422,179.4590
 E. 957,470.0673
 P.T. STA. 8+05.00 \perp ALEXANDER RD.
 N. 422,147.3694
 E. 957,525.8332



P.O.T. STA. 10+00.00 \perp SCHNAKE RD.
 STA. 3+80.80 \perp ALEXANDER RD.
 N. 422,477.4697
 E. 957,264.8295
 P.T. STA. 4+33.88 \perp ALEXANDER RD.
 N. 422,436.4384
 E. 957,298.3850
 P.C. STA. 10+77.01 \perp SCHNAKE RD.
 N. 422,531.7382
 E. 957,319.4654



P.O.T. STA. 0+13.20 \perp ALEXANDER RD.
 N. 422,556.8584
 E. 956,919.0474
 P.C. STA. 1+60.54 \perp ALEXANDER RD.
 N. 422,558.6520
 E. 957,066.3724
 P.I. STA. 3+09.70 \perp ALEXANDER RD.
 N. 422,560.4679
 E. 957,215.5235



P.T. STA. 11+65.70 \perp SCHNAKE RD.
 N. 422,565.1404
 E. 957,399.2711
 P.O.T. STA. 13+54.37 \perp SCHNAKE RD.
 N. 422,567.1696
 E. 957,587.9243

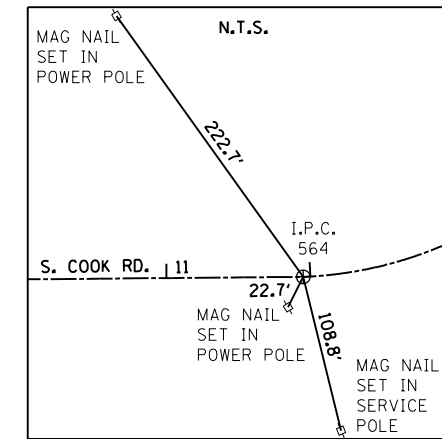
STA. 1+62.07 ALEXANDER RD. (18)
 STA. 10+00.00 DODD CEMETERY RD.

STA. 3+80.80 ALEXANDER RD. (19)
 STA. 10+00.00 SCHNAKE RD.

STA. 482+50.00 U.S. 45 (20)
 STA. 10+00.00 ALEXANDER RD. (20)
 STA. 10+00.00 S. COOK RD. (21)

NO TIES AVAILABLE FOR THE FOLLOWING ALIGNMENT POINTS:

P.I. STA. 11+23.69 \perp SCHNAKE RD.
 N. 422,564.6383
 E. 957,352.5883
 P.I. STA. 14+25.59 \perp S. COOK RD.
 N. 421,843.8581
 E. 958,067.0706
 P.T. STA. 15+78.79 \perp S. COOK RD.
 N. 422,024.9546
 E. 958,209.8209



P.C. STA. 11+95.00 \perp S. COOK RD.
 N. 421,952.8554
 E. 957,863.8633

(#) *REFER TO ALIGNMENT & CURVE DATA SHEETS (TYP.)

FILE NAME =	USER NAME = bemory	DESIGNED -	REVISED -
P:\Projects\2011 Projects\11297 - IDOT US 45 Ph2\CV\CADD Sheets\0978077-sht-ATB-Ties.dwg		DRAWN -	REVISED -
Default	PLOT SCALE = 200.0000' / in.	CHECKED -	REVISED -
	PLOT DATE = 4/30/2014	DATE -	REVISED -

STATE OF ILLINOIS
 DEPARTMENT OF TRANSPORTATION

ALIGNMENTS & TIES
 ALEXANDER RD., SCHNAKE RD., & S. COOK RD.

SCALE: 100'-1" SHEET OF SHEETS STA. TO STA.

F.A.P. RTE.	SECTION	COUNTY	TOTAL SHEETS	SHEET NO.
332	(29,30)R-1	SALINE	745	78
CONTRACT NO. 78077				
ILLINOIS FED. AID PROJECT				