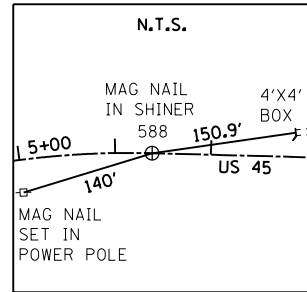
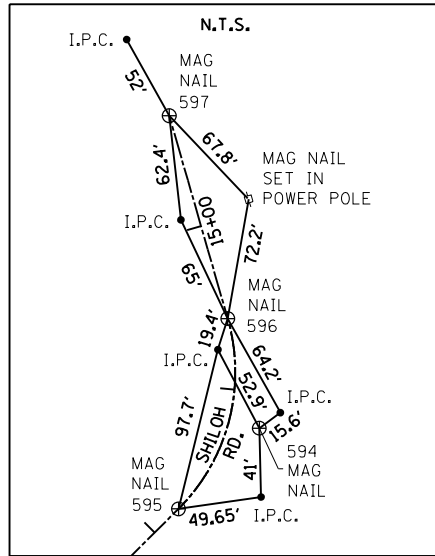
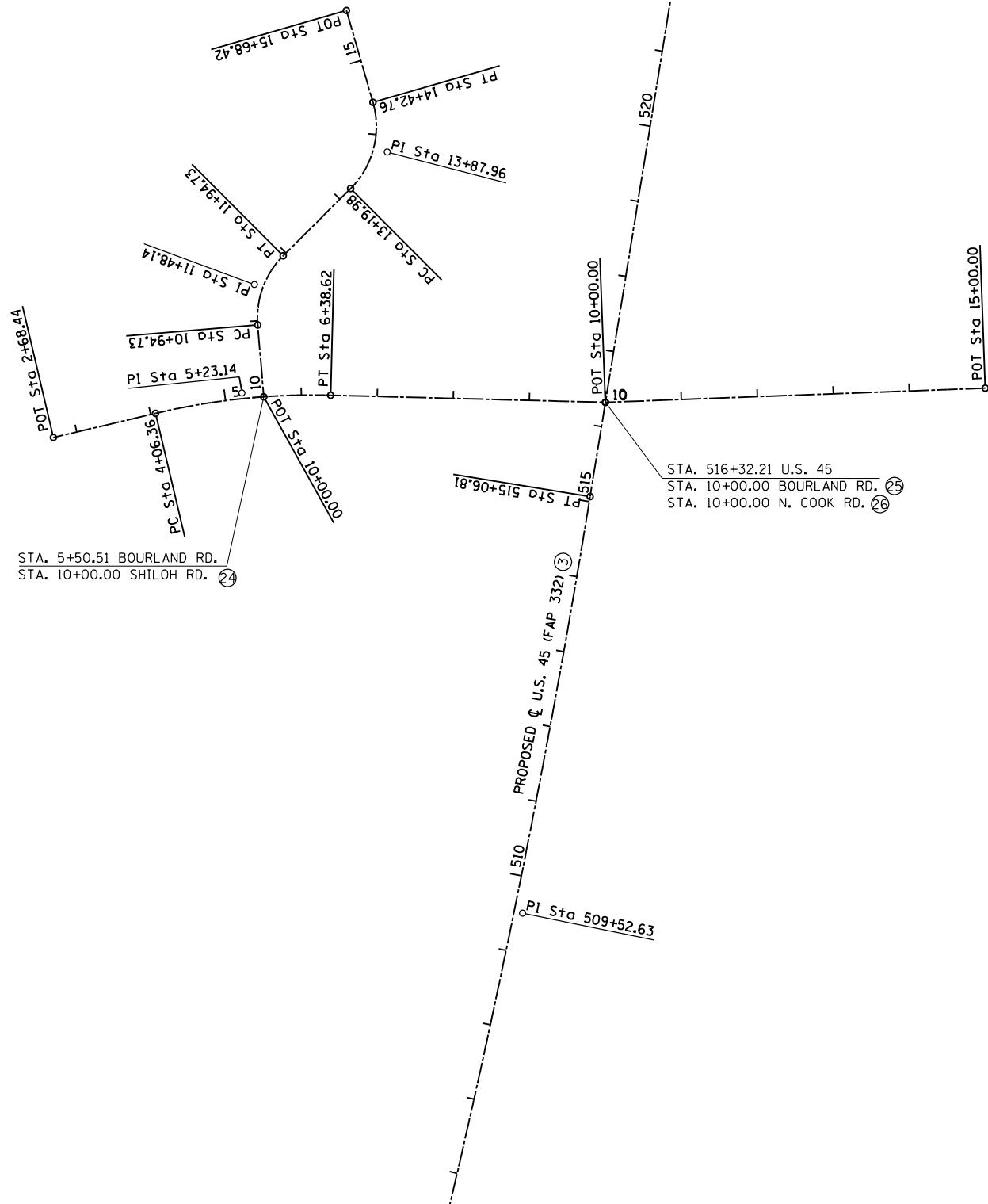


⊕ REFER TO ALIGNMENT & CURVE DATA SHEETS (TYP.)



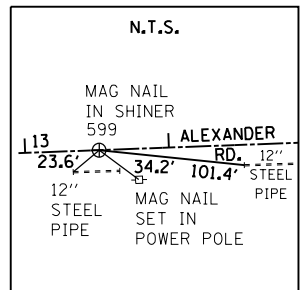
P.T. STA. 6+38.62 \oslash BOURLAND RD.
 N. 425,116.6310
 E. 958,988.2207

P.C. STA. 13+19.98 \oslash SHILOH RD.
 N. 425,370.5542
 E. 959,088.5049
 P.I. STA. 13+87.96 \oslash SHILOH RD.
 N. 425,403.3807
 E. 959,148.0228
 P.T. STA. 14+42.76 \oslash SHILOH RD.
 N. 425,471.3510
 E. 959,147.9652
 P.O.T. STA. 15+68.42 \oslash SHILOH RD.
 N. 425,597.0142
 E. 959,147.8586



NO TIES AVAILABLE FOR THE FOLLOWING ALIGNMENT POINTS:

P.C. STA. 10+94.73 \oslash SHILOH RD.
 N. 425,231.8954
 E. 958,921.5958
 P.I. STA. 11+48.14 \oslash SHILOH RD.
 N. 425,284.2687
 E. 958,932.0601
 P.T. STA. 11+94.73 \oslash SHILOH RD.
 N. 425,310.0626
 E. 958,978.8271
 P.O.T. STA. 15+00.00 \oslash N. COOK RD.
 N. 424,887.7912
 E. 959,818.2153
 P.O.T. STA. 10+00.00 \oslash SHILOH RD.
 STA. 5+50.51 \oslash BOURLAND RD
 N. 425,139.0000
 E. 958,903.0349
 P.O.T. STA. 2+68.44 \oslash BOURLAND RD.
 N. 425,163.9229
 E. 958,622.4124
 P.C. STA. 4+06.36 \oslash BOURLAND RD.
 N. 425,157.3469
 E. 958,760.2178
 P.I. STA. 5+23.14 \oslash BOURLAND RD.
 N. 425,151.7807
 E. 958,876.8607



P.O.T. STA. 13+51.49 \oslash N. COOK RD.
 N. 424,923.4521
 E. 959,674.0508

FILE NAME =	USER NAME = bemery	DESIGNED -	REVISED -
P:\Projects\2011 Projects\11297 - IDOT US 45 Ph2\CV\CADD Sheets\0978077-sht-ATB-Ties.dwg		DRAWN -	REVISED -
Default	PLOT SCALE = 200.0000' / in.	CHECKED -	REVISED -
	PLOT DATE = 4/30/2014	DATE -	REVISED -

STATE OF ILLINOIS
 DEPARTMENT OF TRANSPORTATION

ALIGNMENTS & TIES
 SHILOH RD., BOURLAND RD. & N. COOK RD.

SCALE: 100'-1" SHEET OF SHEETS STA. TO STA.

F.A.P. RTE.	SECTION	COUNTY	TOTAL SHEETS	SHEET NO.
332	(29,30)R-1	SALINE	745	80
CONTRACT NO. 78077				
ILLINOIS FED. AID PROJECT				