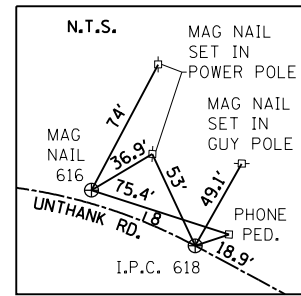


P.O.T. STA. 10+00.00 @ ABELL RD.
 STA. 5+97.34 @ UNTHANK RD.
 N. 433,254.6037
 E. 962,791.5438

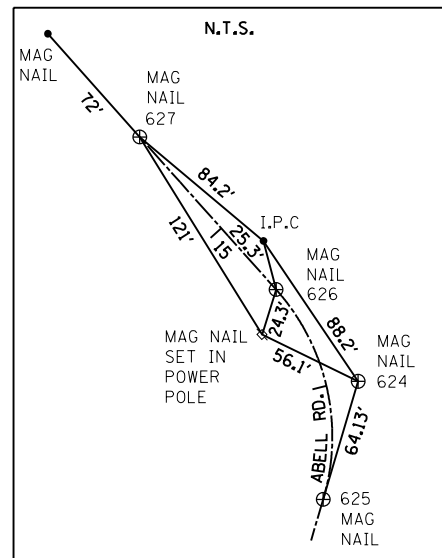
P.O.T. STA. 4+47.20 @ UNTHANK RD.
 N. 433,254.6037
 E. 962,641.4052

P.C. STA. 7+09.45 @ UNTHANK RD.
 N. 433,254.6037
 E. 962,903.6546



P.I. STA. 7+70.79 @ UNTHANK RD.
 N. 433,254.5553
 E. 962,964.9988

P.T. STA. 8+30.16 @ UNTHANK RD.
 N. 433,228.4407
 E. 963,020.5068

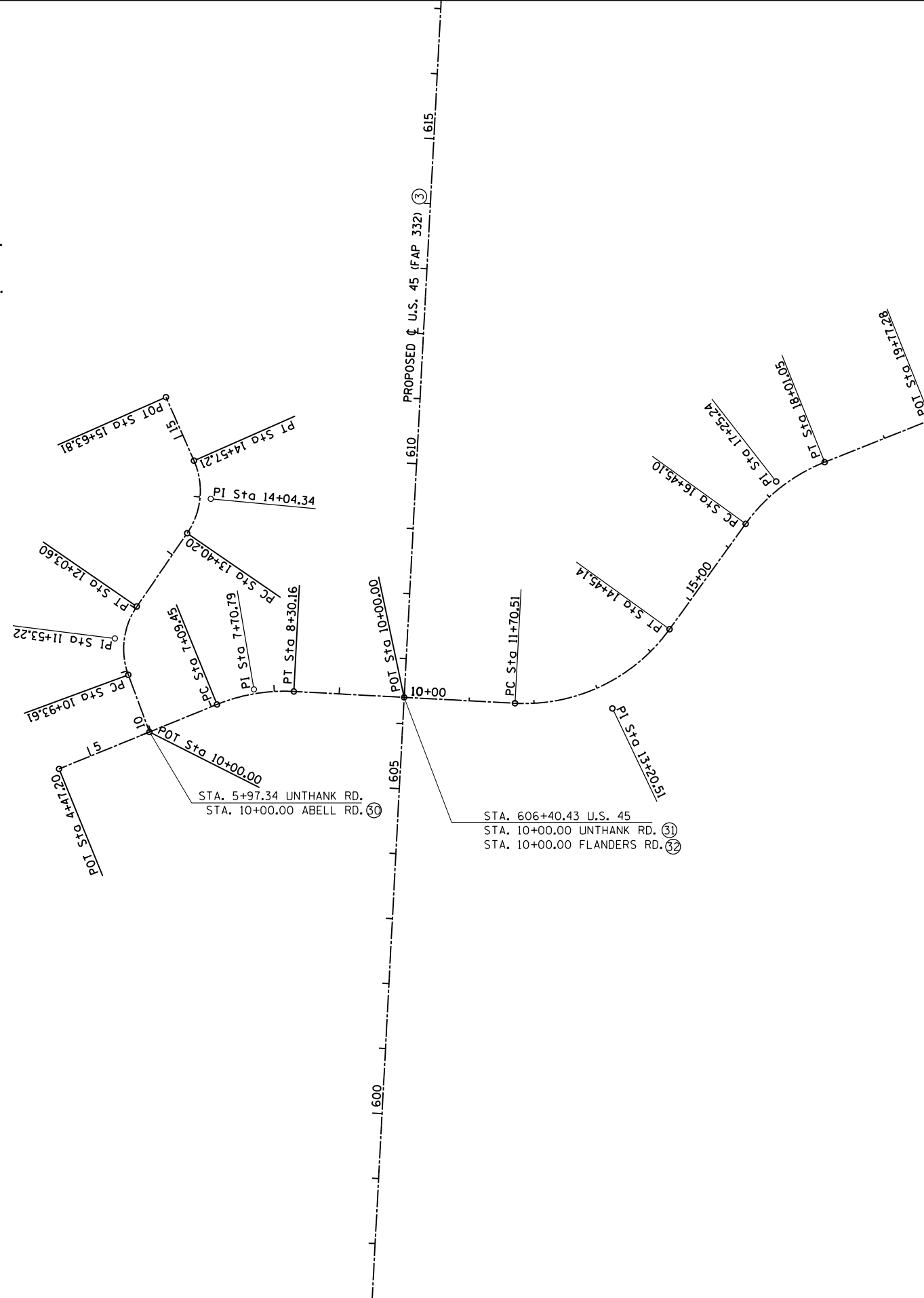


P.C. STA. 13+40.20 @ ABELL RD.
 N. 433,515.4925
 E. 962,960.5803

P.I. STA. 14+04.34 @ ABELL RD.
 N. 433,550.7134
 E. 963,014.1787

P.T. STA. 14+57.21 @ ABELL RD.
 N. 433,614.8231
 E. 963,012.3808

P.O.T. STA. 15+63.81 @ ABELL RD.
 N. 433,721.3816
 E. 963,009.3927



NO TIES AVAILABLE FOR THE FOLLOWING ALIGNMENT POINTS:

- P.C. STA. 10+93.61 @ ABELL RD.
 N. 433,348.1663
 E. 962,794.6361
- P.I. STA. 11+53.22 @ ABELL RD.
 N. 433,407.7405
 E. 962,796.6051
- P.T. STA. 12+03.60 @ ABELL RD.
 N. 433,440.4745
 E. 962,846.4191
- P.C. STA. 11+70.51 @ FLANDERS RD.
 N. 433,083.3081
 E. 963,328.3632
- P.I. STA. 13+20.51 @ FLANDERS RD.
 N. 433,019.3483
 E. 963,464.0353
- P.T. STA. 14+45.14 @ FLANDERS RD.
 N. 433,098.7832
 E. 963,591.2667
- P.C. STA. 16+45.10 @ FLANDERS RD.
 N. 433,204.6818
 E. 963,760.8852
- P.I. STA. 17+25.24 @ FLANDERS RD.
 N. 433,247.1190
 E. 963,828.8571
- P.T. STA. 18+01.05 @ FLANDERS RD.
 N. 433,246.4015
 E. 963,908.9857
- P.O.T. STA. 19+77.28 @ FLANDERS RD.
 N. 433,244.8234
 E. 964,085.2089



FILE NAME =	USER NAME = bemy	DESIGNED -	REVISED -
P:\Projects\2011\Projects\11297 - IDOT US 45 Ph2\CV\CADD Sheets\0978077-sht-ATB-Ties.dwg		DRAWN -	REVISED -
Default	PLOT SCALE = 200.0000' / in.	CHECKED -	REVISED -
	PLOT DATE = 4/30/2014	DATE -	REVISED -

STATE OF ILLINOIS
 DEPARTMENT OF TRANSPORTATION

ALIGNMENTS & TIES			
UNTHANK RD., ABELL RD. & FLANDERS RD.			
SCALE: 100'-1"	SHEET	OF SHEETS	STA. TO STA.

F.A.P. RTE.	SECTION	COUNTY	TOTAL SHEETS	SHEET NO.
332	(29,30)R-1	SALINE	745	82
CONTRACT NO. 78077				
ILLINOIS FED. AID PROJECT				

⊕ REFER TO ALIGNMENT & CURVE DATA SHEETS (TYP.)