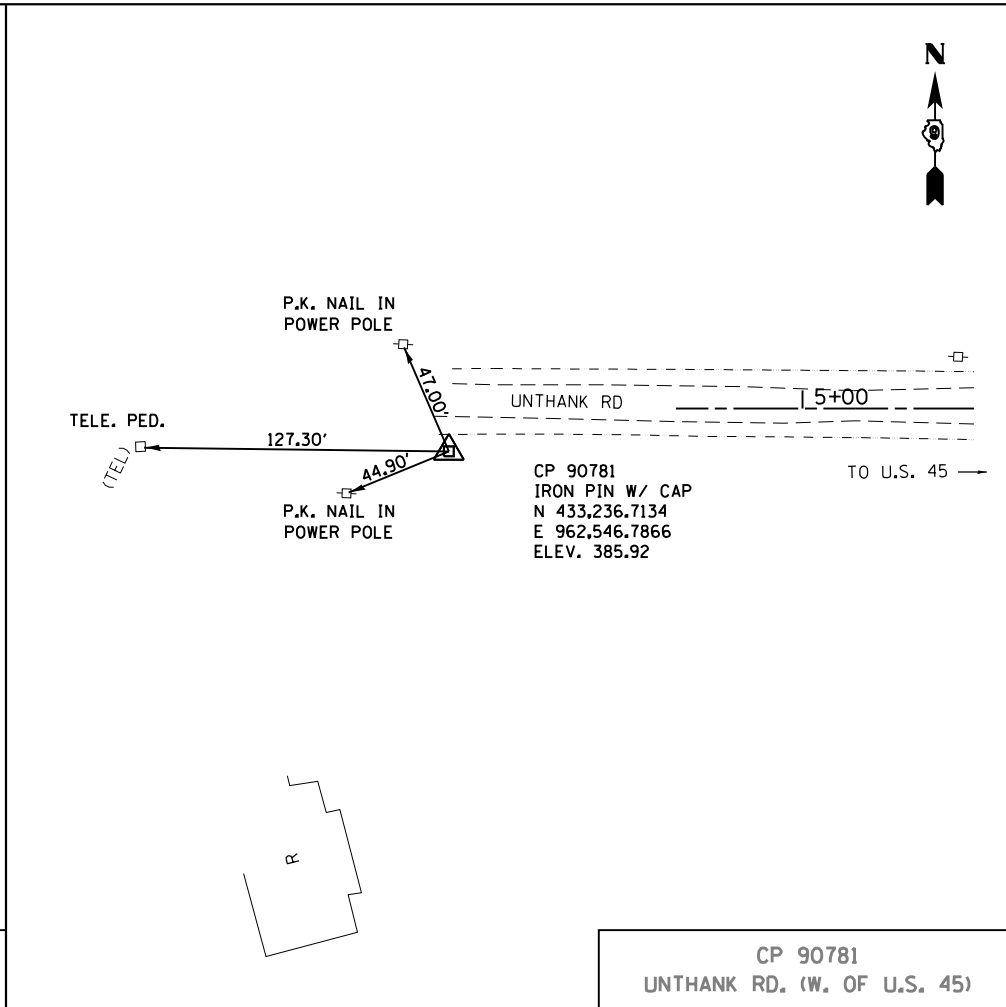
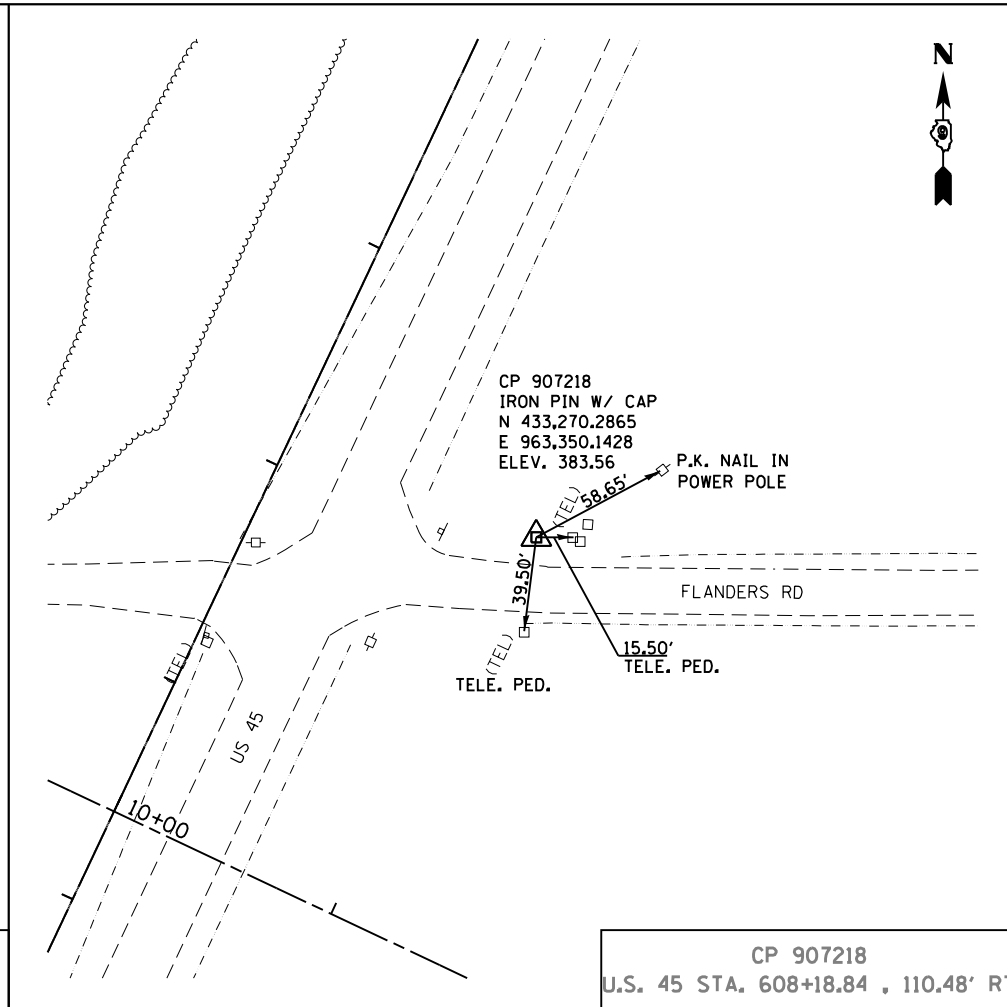


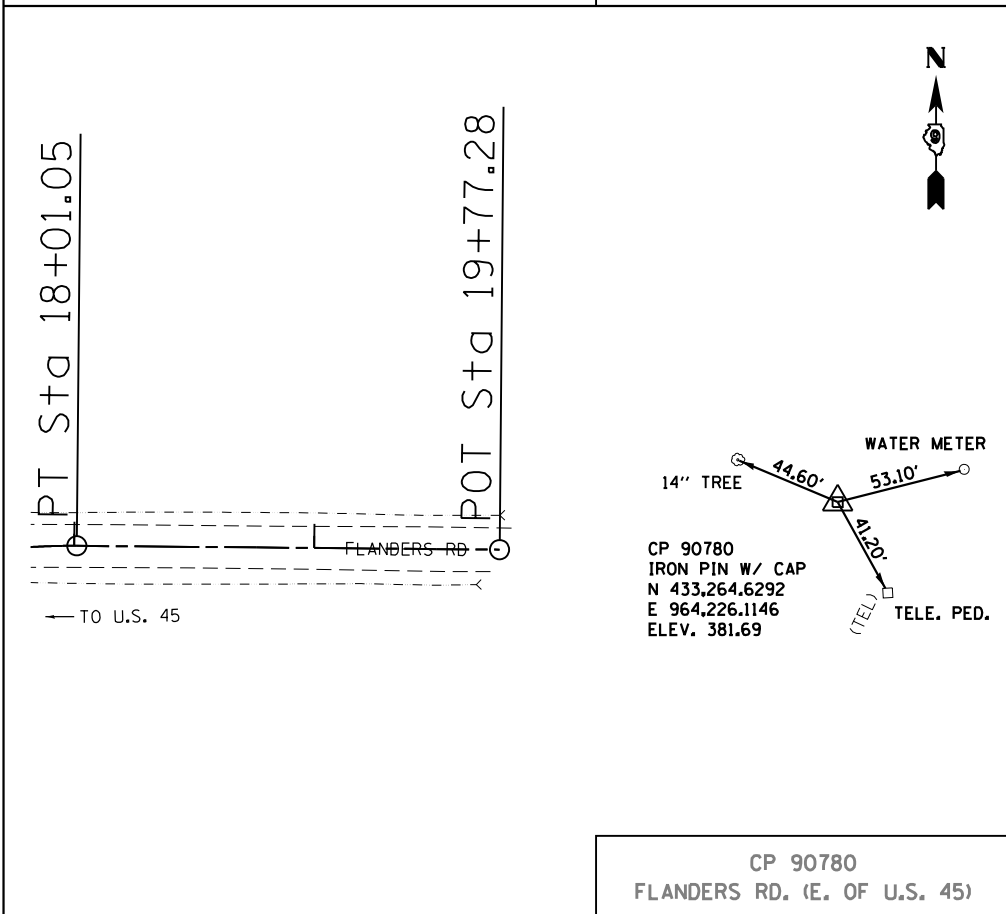
CP 90778
U.S. 45 STA. 590+41.24, 79.25' RT



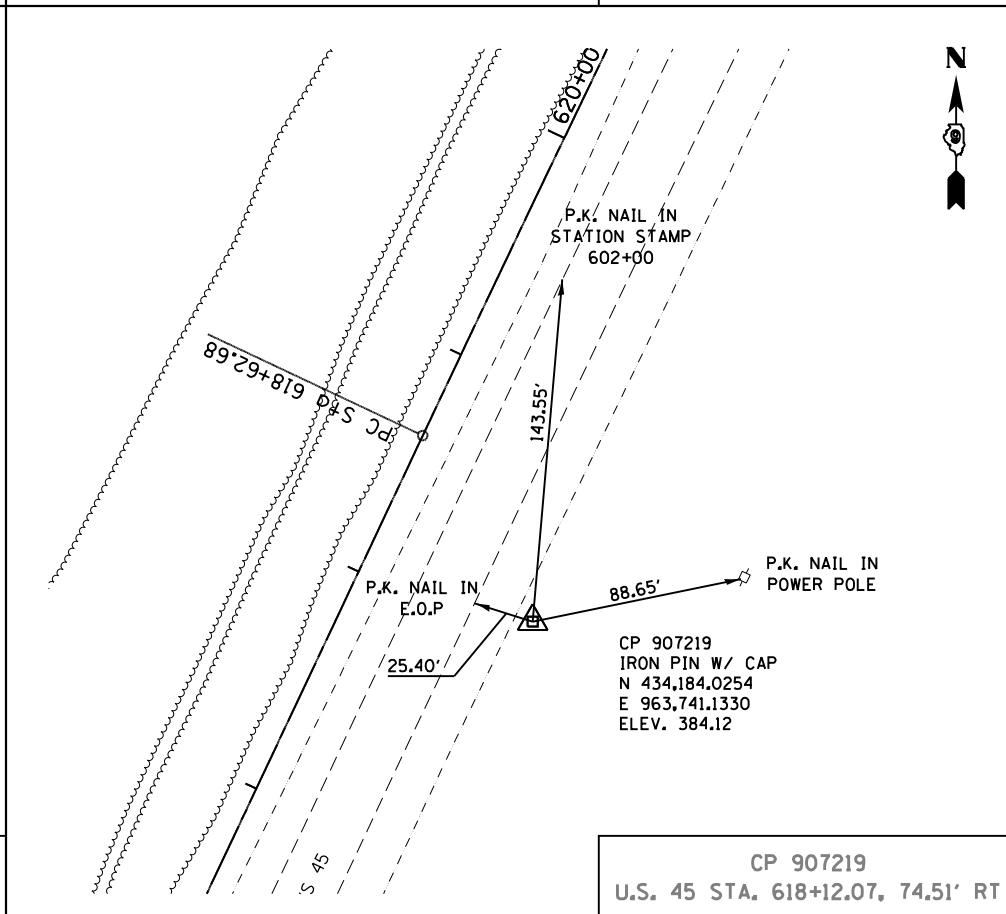
CP 90781
UNTHANK RD. (W. OF U.S. 45)



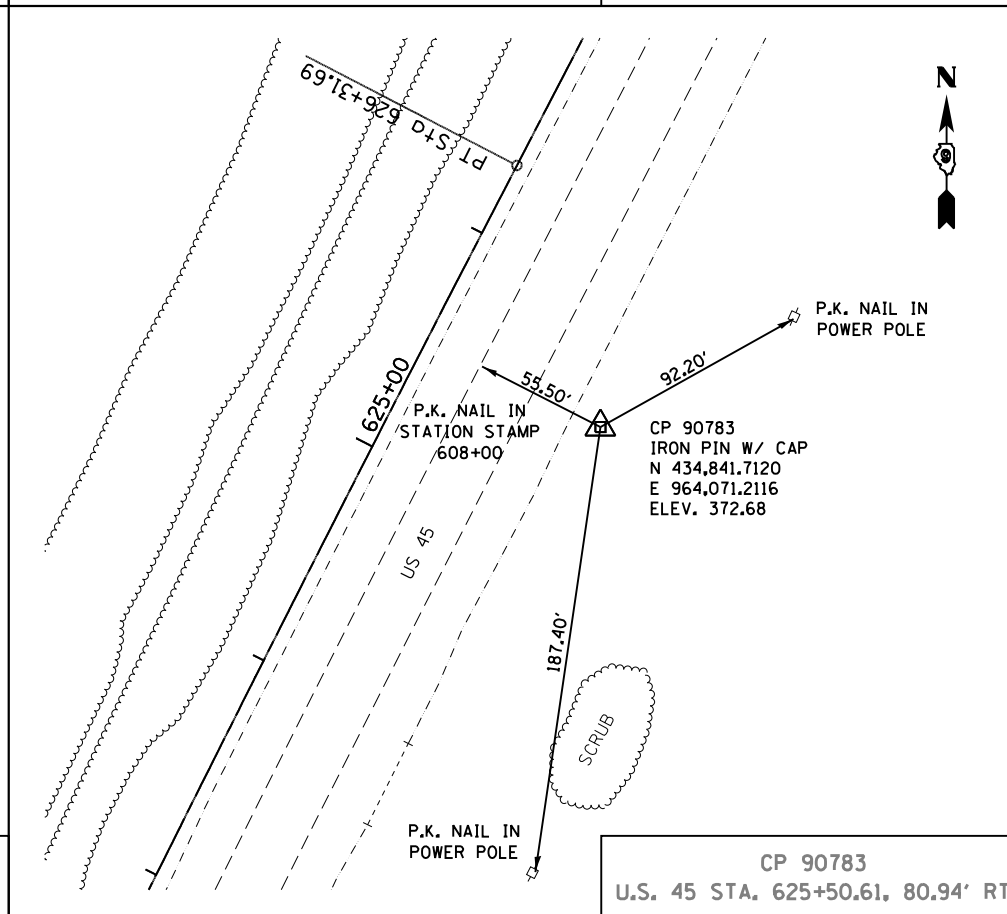
CP 907218
U.S. 45 STA. 608+18.84, 110.48' RT



CP 90780
FLANDERS RD. (E. OF U.S. 45)



CP 907219
U.S. 45 STA. 618+12.07, 74.51' RT



CP 90783
U.S. 45 STA. 625+50.61, 80.94' RT

FILE NAME =	USER NAME = bemery	DESIGNED -	REVISED -
P:\Projects\2011 Projects\11297 - IDOT US 45 Ph2\CV\CADD Sheets\0978077-sht-ATB-Conto		DRAWN -	REVISED -
Default	PLOT SCALE = 80.0000' / in.	CHECKED -	REVISED -
	PLOT DATE = 4/30/2014	DATE -	REVISED -

**STATE OF ILLINOIS
DEPARTMENT OF TRANSPORTATION**

CONTROL POINTS	
SCALE:	SHEET 5 OF 7 SHEETS STA. TO STA.

F.A.P. RTE.	SECTION	COUNTY	TOTAL SHEETS	SHEET NO.
332	(29,30)R-1	SALINE	745	88
CONTRACT NO. 78077				
ILLINOIS FED. AID PROJECT				