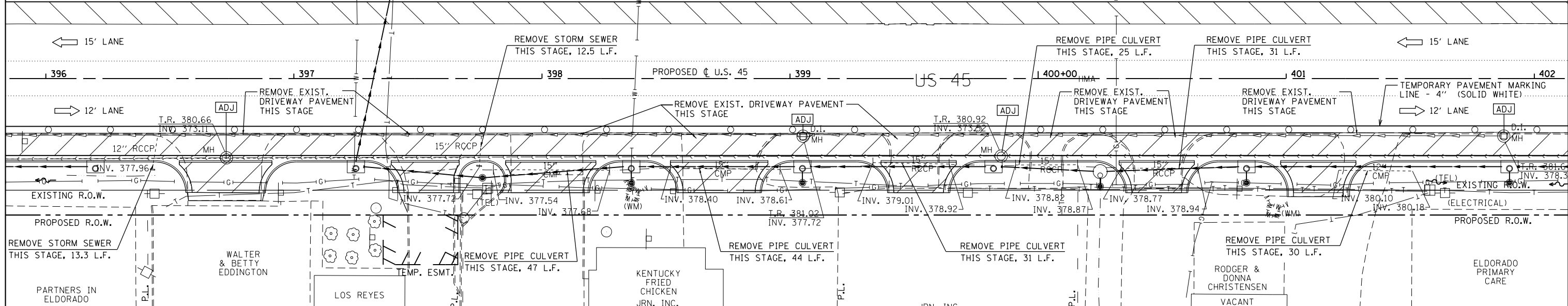
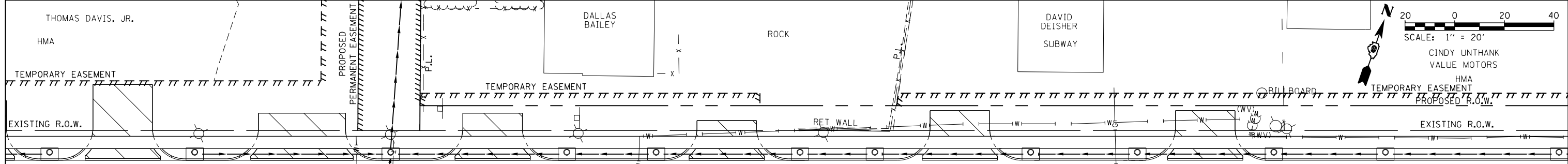


LEGENCE BANK, L RUSSEL CORP., CANC, ROC ONE STOP, THOMAS DAVIS, JR. HMA, TEMPORARY EASEMENT, EXIST. R.O.W., 12' LANE, 15' LANE, REMOVE CURB INLET THIS STAGE, TEMPORARY PAVEMENT MARKING LINE - 4" (SOLID WHITE), REMOVE CATCH BASIN THIS STAGE, REMOVE EXIST. DRIVEWAY PAVEMENT THIS STAGE, REMOVE CATCH BASIN THIS STAGE, REMOVE CURB INLET THIS STAGE, REMOVE PIPE CULVERT THIS STAGE, 29 L.F., PARTNERS IN ELDORADO, SCALE: 1" = 20'



FILE NAME = P:\Projects\2011 Projects\11297 - IDOT US 45 Ph2\CV\CADD Sheets\0978077-sht-MOT-Stage1B.dwg	USER NAME = bemery	DESIGNED -	REVISED -	STATE OF ILLINOIS DEPARTMENT OF TRANSPORTATION	MAINTENANCE OF TRAFFIC - STAGE 1B U.S. 45	F.A.P. R.T.E. = 332	SECTION = (29,30)R-1	COUNTY = SALINE	TOTAL SHEETS = 745	SHEET NO. = 247
PLOT SCALE = 40.0000' / in.	CHECKED -	REVISED -	SCALE: 1" = 20'			SHEET NO. OF SHEETS	STA. 390+00.00 TO STA. 402+00.00	ILLINOIS FED. AID PROJECT		
PLOT DATE = 4/30/2014	DATE -	REVISED -						CONTRACT NO. 78077		