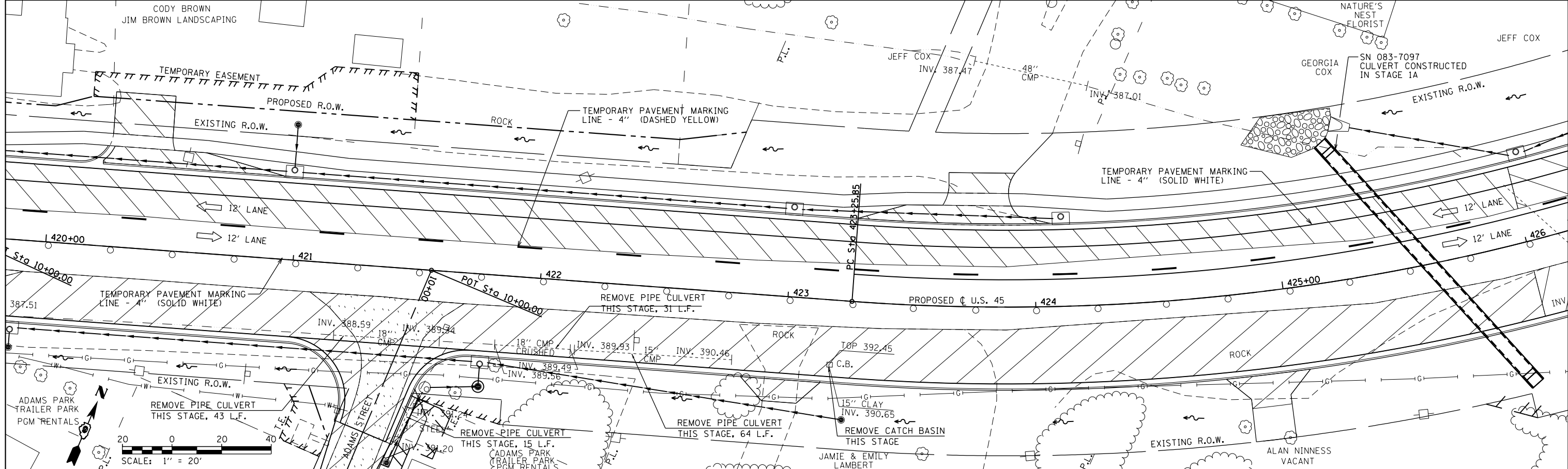


	TEMPORARY PAVEMENT CONSTRUCTED AS NOTED		PERMANENT PAVEMENT CONSTRUCTED THIS STAGE		PERMANENT PAVEMENT CONSTRUCTED IN PREVIOUS STAGE		PAVEMENT REMOVAL THIS STAGE		STRUCTURE TO BE ADJUSTED		DIRECTION OF TRAFFIC FLOW		TEMPORARY FLOW ARROW		SIGN PANEL/BARRICADE ASSEMBLY (INCLUDED IN THE COST FOR TRAFFIC CONTROL AND PROTECTION, LUMP SUM)
	CONSTRUCTION SIGN		DRUMS WITH STEADY BURNING MONODIRECTIONAL LIGHTS		25' CENTERS		TYPE III BARRICADE								



FILE NAME =	USER NAME = bemory	DESIGNED -	REVISED -	STATE OF ILLINOIS DEPARTMENT OF TRANSPORTATION	MAINTENANCE OF TRAFFIC - STAGE 1B U.S. 45	F.A.P. RTE.	SECTION	COUNTY	TOTAL SHEETS	SHEET NO.
P:\Projects\2011 Projects\11297 - IDOT US 45 Ph2\CV\CADD Sheets\0978077-sht-MOT-Stage1B	DRAWN -	REVISED -	332			(29,30)R-1	SALINE	745	249	
PLOT SCALE = 40.0000' / in.	CHECKED -	REVISED -	CONTRACT NO. 78077							
PLOT DATE = 4/30/2014	DATE -	REVISED -	ILLINOIS FED. AID PROJECT							

SCALE: 1" = 20' SHEET NO. OF SHEETS STA. 414+00.00 TO STA. 426+00.00