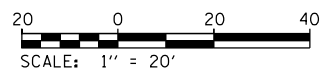
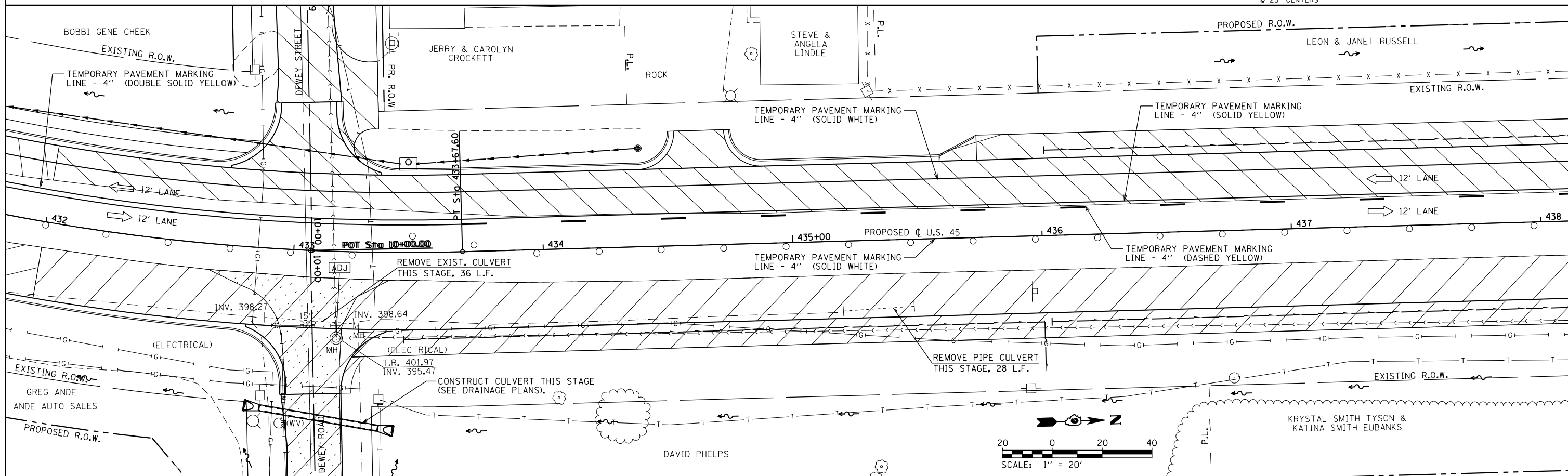


	TEMPORARY PAVEMENT CONSTRUCTED AS NOTED		PERMANENT PAVEMENT CONSTRUCTED THIS STAGE		PERMANENT PAVEMENT CONSTRUCTED IN PREVIOUS STAGE		PAVEMENT REMOVAL THIS STAGE		STRUCTURE TO BE ADJUSTED		DIRECTION OF TRAFFIC FLOW		TEMPORARY FLOW ARROW		DRUMS WITH STEADY BURNING MONODIRECTIONAL LIGHTS @ 25' CENTERS		SIGN PANEL/BARRICADE ASSEMBLY (INCLUDED IN THE COST FOR TRAFFIC CONTROL AND PROTECTION, LUMP SUM)
	CONSTRUCTION SIGN		TYPE III BARRICADE														



FILE NAME =	USER NAME = bemery	DESIGNED -	REVISED -	STATE OF ILLINOIS DEPARTMENT OF TRANSPORTATION				MAINTENANCE OF TRAFFIC - STAGE 1B U.S. 45				F.A.P. RTE.	SECTION	COUNTY	TOTAL SHEETS	SHEET NO.
P:\Projects\2011 Projects\11297 - IDOT US 45 Ph2\CV\CADD Sheets\0978077-sht-MOT-Stage1B.dwg	PLOT SCALE = 40.0000' / in.	CHECKED -	REVISED -									332	(29,30)R-1	SALINE	745	250
PLOT DATE = 4/30/2014	DATE -	REVISED -	REVISED -									CONTRACT NO. 78077				
												ILLINOIS FED. AID PROJECT				
				SCALE: 1" = 20'	SHEET NO.	OF	SHEETS	STA. 426+00.00 TO STA. 438+00.00								