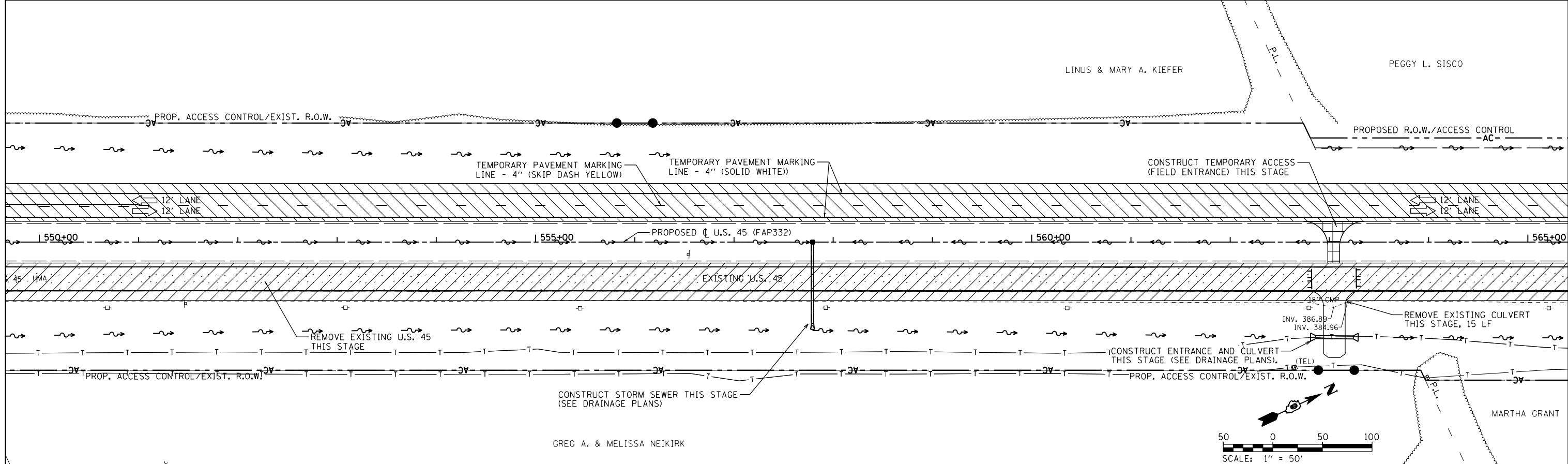


LEGEND:

- TEMPORARY PAVEMENT CONSTRUCTED AS NOTED
- PERMANENT PAVEMENT CONSTRUCTED THIS STAGE
- PERMANENT PAVEMENT CONSTRUCTED IN PREVIOUS STAGE
- ROADWAY REMOVAL THIS STAGE
- DIRECTION OF TRAFFIC FLOW
- CONSTRUCTION SIGN
- TYPE III BARRICADE
- TEMPORARY FLOW ARROW
- DRUMS WITH STEADY BURNING MONODIRECTIONAL LIGHTS @ 25' CENTERS
- SIGN PANEL/BARRICADE ASSEMBLY (INCLUDED IN THE COST FOR TRAFFIC CONTROL AND PROTECTION, LUMP SUM)



FILE NAME =	USER NAME = bemory	DESIGNED -	REVISED -	STATE OF ILLINOIS DEPARTMENT OF TRANSPORTATION	MAINTENANCE OF TRAFFIC - STAGE 2 U.S. 45	F.A.P. R.T.E. =	SECTION =	COUNTY =	TOTAL SHEETS =	SHEET NO. =	
P:\Projects\2011 Projects\11297 - IDOT US 45 Ph2\CV\CADD Sheets\0978077-sht-MOT-Stage 2	PLOT SCALE = 100.0000' / in.	CHECKED -	REVISED -			332	(29,30)R-1	SALINE	745	274	
Default	PLOT DATE = 4/30/2014	DATE -	REVISED -			CONTRACT NO. 78077					
						SCALE: 1" = 50'	SHEET OF SHEETS	STA. 535+00.00 TO STA. 565+00.00	ILLINOIS FED. AID PROJECT		