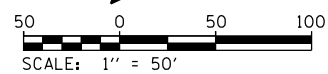
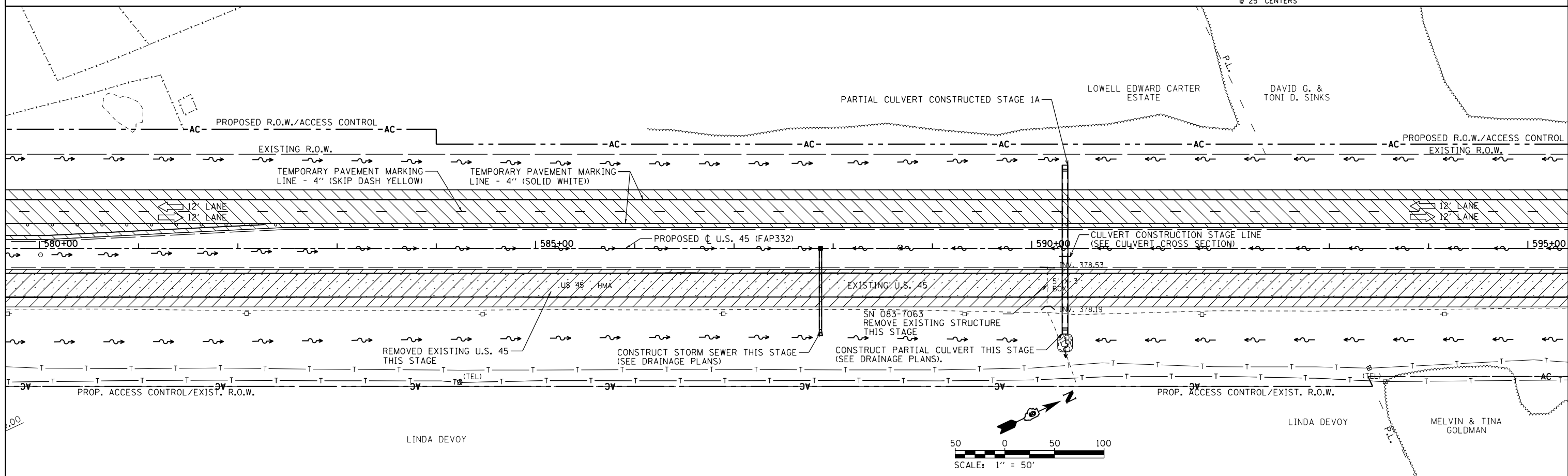


	TEMPORARY PAVEMENT CONSTRUCTED AS NOTED		PERMANENT PAVEMENT CONSTRUCTED THIS STAGE		PERMANENT PAVEMENT CONSTRUCTED IN PREVIOUS STAGE		ROADWAY REMOVAL THIS STAGE		DIRECTION OF TRAFFIC FLOW		TYPE III BARRICADE		TEMPORARY FLOW ARROW		DRUMS WITH STEADY BURNING MONODIRECTIONAL LIGHTS @ 25' CENTERS		SIGN PANEL/BARRICADE ASSEMBLY (INCLUDED IN THE COST FOR TRAFFIC CONTROL AND PROTECTION, LUMP SUM)
	CONSTRUCTION SIGN																



FILE NAME =	USER NAME = bemery	DESIGNED -	REVISED -	STATE OF ILLINOIS DEPARTMENT OF TRANSPORTATION	MAINTENANCE OF TRAFFIC - STAGE 2 U.S. 45				F.A.P. RTE.	SECTION	COUNTY	TOTAL SHEETS	SHEET NO.		
P:\Projects\2011 Projects\11297 - IDOT US 45 Ph2\CV\CADD Sheets\0978077-sht-MOT-Stage 2	DRAWN -	REVISED -	REVISED -		SCALE: 1" = 50'	SHEET	OF	SHEETS	STA. 565+00.00	TO STA. 595+00.00	332	(29,30)R-1	SALINE	745	275
Default	PLOT SCALE = 100.0000' / in.	CHECKED -	REVISED -		CONTRACT NO. 78077										
	PLOT DATE = 4/30/2014	DATE -	REVISED -		ILLINOIS FED. AID PROJECT										