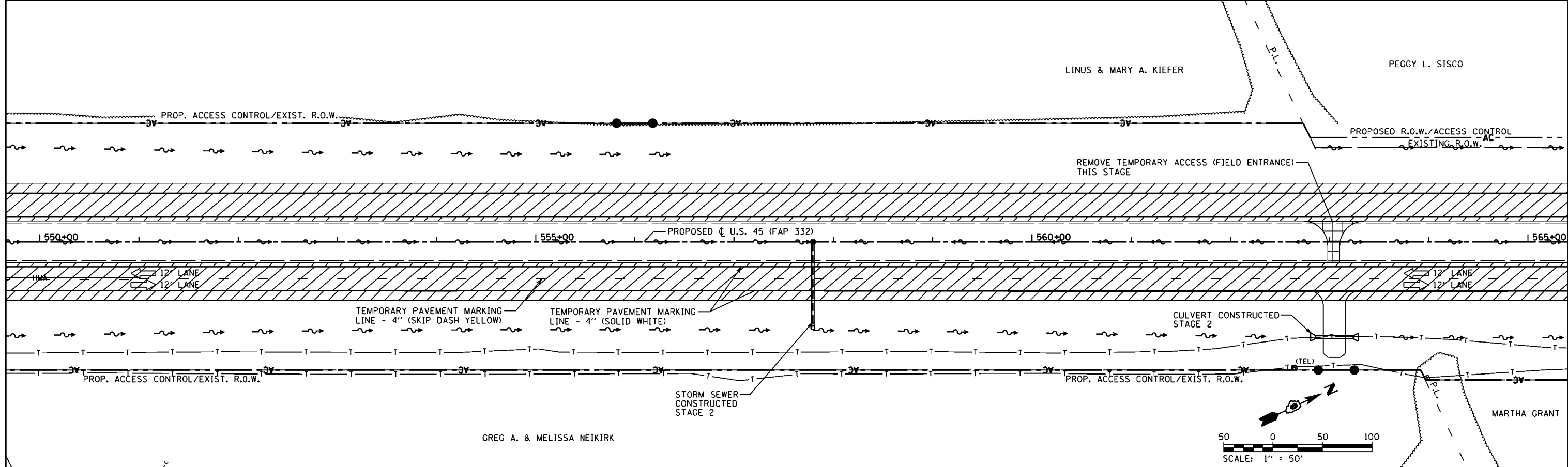


TEMPORARY PAVEMENT CONSTRUCTED AS NOTED	PERMANENT PAVEMENT CONSTRUCTED THIS STAGE	PERMANENT PAVEMENT CONSTRUCTED IN PREVIOUS STAGE	ROADWAY REMOVAL THIS STAGE	DIRECTION OF TRAFFIC FLOW	TYPE III BARRICADE	TEMPORARY FLOW ARROW	DRUMS WITH STEADY BURNING MONODIRECTIONAL LIGHTS @ 25' CENTERS	SIGN PANEL/BARRICADE ASSEMBLY (INCLUDED IN THE COST FOR TRAFFIC CONTROL AND PROTECTION, LUMP SUM)
				CONSTRUCTION SIGN				



FILE NAME =	USER NAME = bmary	DESIGNED -	REVISED -	STATE OF ILLINOIS DEPARTMENT OF TRANSPORTATION	MAINTENANCE OF TRAFFIC - STAGE 3 U.S. 45			F.A.P. RTE. = 332	SECTION = (29,30)R-1	COUNTY = SALINE	TOTAL SHEETS = 745	SHEET NO. = 312
Default	P:\Projects\2011 Projects\11297 - IDOT US 45 Ph2\CV\CADD Sheets\0978077-sht-MOT-Stage3	DRAWN -	REVISED -		SCALE: 1" = 50'	SHEET	OF	SHEETS	STA. 535+00.00	TO STA. 565+00.00	CONTRACT NO. 78077	
	PLOT SCALE = 100.0000' / 1in.	CHECKED -	REVISED -		ILLINOIS FED. AID PROJECT							
	PLOT DATE = 4/30/2014	DATE -	REVISED -									