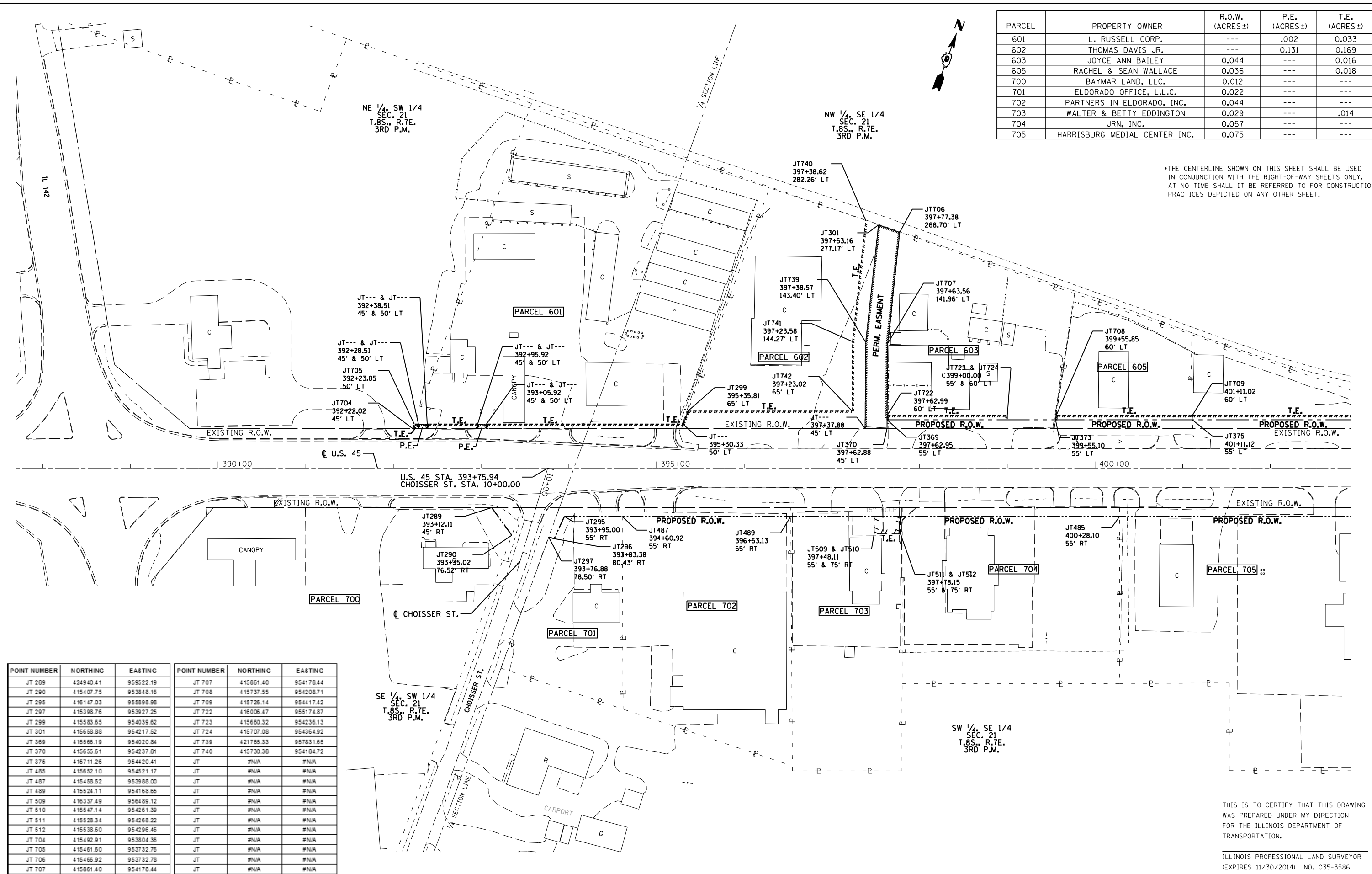


PARCEL	PROPERTY OWNER	R.O.W. (ACRES±)	P.E. (ACRES±)	T.E. (ACRES±)
601	L. RUSSELL CORP.	---	.002	0.033
602	THOMAS DAVIS JR.	---	0.131	0.169
603	JOYCE ANN BAILEY	0.044	---	0.016
605	RACHEL & SEAN WALLACE	0.036	---	0.018
700	BAYMAR LAND, L.L.C.	0.012	---	---
701	ELDORADO OFFICE, L.L.C.	0.022	---	---
702	PARTNERS IN ELDORADO, INC.	0.044	---	---
703	WALTER & BETTY EDDINGTON	0.029	---	.014
704	JRN, INC.	0.057	---	---
705	HARRISBURG MEDIAL CENTER INC.	0.075	---	---

*THE CENTERLINE SHOWN ON THIS SHEET SHALL BE USED IN CONJUNCTION WITH THE RIGHT-OF-WAY SHEETS ONLY. AT NO TIME SHALL IT BE REFERRED TO FOR CONSTRUCTION PRACTICES DEPICTED ON ANY OTHER SHEET.



POINT NUMBER	NORTHING	EASTING	POINT NUMBER	NORTHING	EASTING
JT 289	424940.41	959522.19	JT 707	415861.40	954178.44
JT 290	415407.75	953848.16	JT 708	415737.55	954208.71
JT 295	416147.03	955898.98	JT 709	415726.14	954417.42
JT 297	415398.76	953927.25	JT 722	416006.47	955174.87
JT 299	415583.65	954039.62	JT 723	415660.32	954236.13
JT 301	415658.88	954217.52	JT 724	415707.08	954364.92
JT 369	415566.19	954020.84	JT 739	421765.33	957831.65
JT 370	415655.61	954237.81	JT 740	415730.38	954184.72
JT 375	415711.26	954420.41	JT	#N/A	#N/A
JT 485	415652.10	954521.17	JT	#N/A	#N/A
JT 487	415458.52	953988.00	JT	#N/A	#N/A
JT 489	415524.11	954168.65	JT	#N/A	#N/A
JT 509	416337.49	956489.12	JT	#N/A	#N/A
JT 510	415547.14	954261.39	JT	#N/A	#N/A
JT 511	415528.34	954268.22	JT	#N/A	#N/A
JT 512	415538.60	954296.46	JT	#N/A	#N/A
JT 704	415492.91	953804.36	JT	#N/A	#N/A
JT 705	415461.60	953732.76	JT	#N/A	#N/A
JT 706	415466.92	953732.78	JT	#N/A	#N/A
JT 707	415861.40	954178.44	JT	#N/A	#N/A

FILE NAME =	USER NAME = \$USER\$	DESIGNED -	REVISED -	STATE OF ILLINOIS DEPARTMENT OF TRANSPORTATION	RIGHT OF WAY PLANS U.S. 45			F.A.P. RT.E.	SECTION	COUNTY	TOTAL SHEETS	SHEET NO.
et:\pwork\p\dot\l\avenderba\d0395921\0978077-sht-R0Wplans.dgn		DRAWN -	REVISED -		332	(29,30)R-1	SALINE	745	393			
MODELNAME\$	PLOT SCALE = 100.000' / in.	CHECKED -	REVISED -		CONTRACT NO. 78077							
	PLOT DATE = 5/2/2014	DATE -	REVISED -		SCALE:	SHEET	OF SHEETS	STA.	TO STA.	ILLINOIS FED. AID PROJECT		

THIS IS TO CERTIFY THAT THIS DRAWING WAS PREPARED UNDER MY DIRECTION FOR THE ILLINOIS DEPARTMENT OF TRANSPORTATION.
ILLINOIS PROFESSIONAL LAND SURVEYOR (EXPIRES 11/30/2014) NO. 035-3586