

POINT NUMBER	NORTHING	EASTING	POINT NUMBER	NORTHING	EASTING	POINT NUMBER	NORTHING	EASTING	POINT NUMBER	NORTHING	EASTING
TB 62	422668.93	966335.77	JT 26	425526.36	959117.92	JT 288	424940.41	959522.19	JT 685	425480.02	959428.30
TB 63	423274.49	958248.08	JT 27	425526.37	959128.92	JT 574	423149.28	958454.26	JT 686	425477.89	959432.82
JT 1	423914.91	958660.52	JT 28	425357.28	959130.48	JT 575	423149.38	958464.70	JT 687	425658.80	959518.11
JT 2	423914.91	958660.52	JT 29	425339.90	959105.40	JT 576	423787.04	958786.63	JT 688	425660.93	959513.58
JT 4	423971.59	958662.08	JT 30	425283.79	958993.32	JT 577	423873.72	958836.52	JT 689	425105.46	959173.13
JT 5	424945.60	959170.83	JT 31	425182.15	958942.25	JT 579	423661.91	958771.17	JT 692	423901.16	959071.06
JT 6	424979.52	959186.82	JT 32	425161.26	958960.25	JT 580	423625.32	958771.17	JT 744	424957.81	959451.87
JT 6	424979.52	959186.82	JT 34	425132.36	959054.67	JT 581	423625.32	958776.95	JT 746	425008.55	959475.79
JT 7	425005.32	959174.75	JT 35	425141.89	959057.68	JT 582	423598.00	958817.22	JT 747	424992.97	959538.78
JT 8	425068.95	958973.17	JT 41	425563.90	959168.89	JT 583	423598.05	958829.25	JT 748	424979.13	959532.26
JT 9	425107.40	958757.83	JT 42	425410.94	959170.31	JT 584	423660.23	958829.01	JT 749	425257.67	959593.23
JT 10	425111.28	958676.56	JT 43	425471.38	959182.97	JT 587	423860.73	958931.86			
JT 16	424934.09	959195.25	JT 44	425471.39	959192.97	JT 588	423856.65	958934.76			
JT 17	423958.12	958665.48	JT 45	425563.92	959192.89	JT 589	423889.28	958939.39			
JT 18	425182.29	958679.95	JT 46	425226.02	958951.02	JT 661	423954.04	958938.63			
JT 19	425196.19	958680.62	JT 272	424941.79	959683.19	JT 662	423989.60	958958.60			
JT 20	425192.31	958761.89	JT 273	424902.96	959673.59	JT 663	423975.27	958944.10			
JT 21	425182.63	958858.64	JT 274	425051.30	959029.09	JT 664	423976.69	959113.30			
JT 22	425203.72	958885.37	JT 279	425140.67	959187.52	JT 665	423986.03	959143.56			
JT 23	425237.77	958892.18	JT 280	425094.75	959207.04	JT 666	423916.03	959144.05			
JT 24	425336.33	958964.34	JT 282	425083.86	959241.54	JT 667	423902.06	959144.22			
JT 25	425396.82	959074.01	JT 287	424939.34	959443.16	JT 672	423274.76	958261.10			

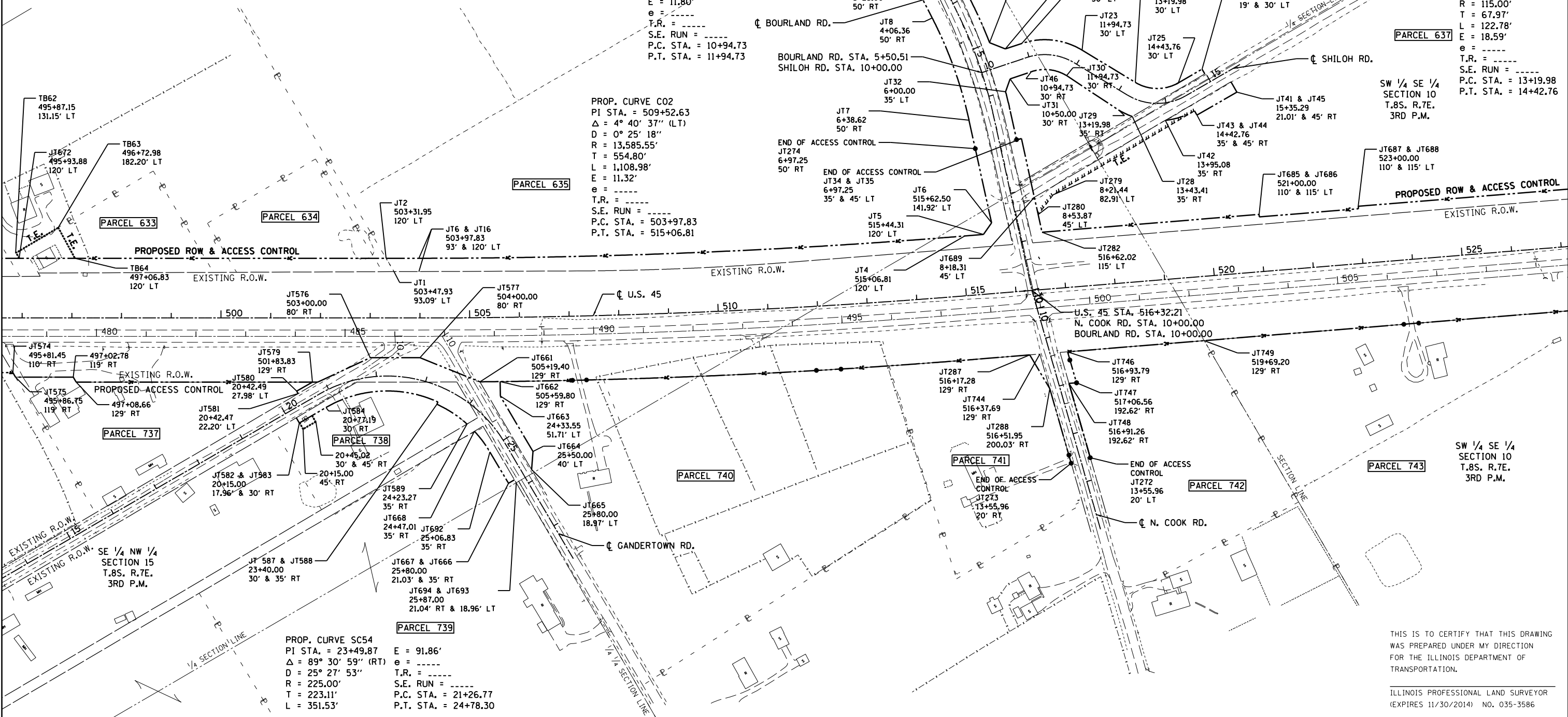
PROP. CURVE SC36
 PI STA. = 5+23.14
 $\Delta = 14^\circ 47' 09''$ (RT)
 $D = 6^\circ 21' 58''$
 $R = 900.00'$
 $T = 116.78'$
 $L = 232.25'$
 $E = 7.54'$
 $e = \text{---}$
 $T.R. = \text{---}$
 $S.E. RUN = \text{---}$
 $P.C. STA. = 4+06.36$
 $P.T. STA. = 6+38.62$

PARCEL	PROPERTY OWNER	FREEWAY R.O.W. (ACRES±)	R.O.W. (ACRES±)	P.E. (ACRES±)	T.E. (ACRES±)
633	KEVIN & JENNIFER FULLER	0.480	---	---	0.096
635	CARA J. BRAMLET	1.315	0.294	---	---
637	DON C. BROCKETT TRUST	0.951	0.711	---	0.115
737	CARLIN INGLES	---	0.005	---	---
738	BRIDGET DAWN RAY	---	0.222	---	0.010
739	DAVID & MELBA RAMSEY	---	0.043	---	---
740	BOBBIE GENE CHEEK SR.	---	0.094	---	---
741	THOMAS R. ALLEN	---	0.017	---	---
742	RICHARD E. HENDERSON	---	0.022	---	---
743	RICHARD E. & LILLIE G. HENDERSON	---	---	---	---

PROP. CURVE SC37
 PI STA. = 11+48.14
 $\Delta = 49^\circ 49' 21''$ (RT)
 $D = 49^\circ 49' 21''$
 $R = 115.00'$
 $T = 53.41'$
 $L = 100.00'$
 $E = 11.80'$
 $e = \text{---}$
 $T.R. = \text{---}$
 $S.E. RUN = \text{---}$
 $P.C. STA. = 10+94.73$
 $P.T. STA. = 11+94.73$

PROP. CURVE C02
 PI STA. = 509+52.63
 $\Delta = 4^\circ 40' 37''$ (LT)
 $D = 0^\circ 25' 18''$
 $R = 13,585.55'$
 $T = 554.80'$
 $L = 1,108.98'$
 $E = 11.32'$
 $e = \text{---}$
 $T.R. = \text{---}$
 $S.E. RUN = \text{---}$
 $P.C. STA. = 503+97.83$
 $P.T. STA. = 515+06.81$

PROP. CURVE SC38
 PI STA. = 13+87.96
 $\Delta = 61^\circ 10' 12''$ (LT)
 $D = 49^\circ 49' 21''$
 $R = 115.00'$
 $T = 67.97'$
 $L = 122.78'$
 $E = 18.59'$
 $e = \text{---}$
 $T.R. = \text{---}$
 $S.E. RUN = \text{---}$
 $P.C. STA. = 13+99.98$
 $P.T. STA. = 14+42.76$



THIS IS TO CERTIFY THAT THIS DRAWING WAS PREPARED UNDER MY DIRECTION FOR THE ILLINOIS DEPARTMENT OF TRANSPORTATION.
 ILLINOIS PROFESSIONAL LAND SURVEYOR (EXPIRES 11/30/2014) NO. 035-3586

FILE NAME = c:\pwwork\p1\dot\l\avenderba\d0395921\0978077-sht-R0Wplans.dgn	USER NAME = sUSER*	DESIGNED -	REVISED -	STATE OF ILLINOIS DEPARTMENT OF TRANSPORTATION	RIGHT OF WAY PLANS U.S. 45				F.A.P. R.T.E. = 332	SECTION = (29,30)R-1	COUNTY = SALINE	TOTAL SHEETS = 745	SHEET NO. = 400
PLOT SCALE = 200.000' / in.	PLOT DATE = 5/2/2014	CHECKED -	REVISED -		SCALE:	SHEET	OF	SHEETS	STA.	TO	STA.	CONTRACT NO. = 78077	
		DATE -	REVISED -		ILLINOIS FED. AID PROJECT								