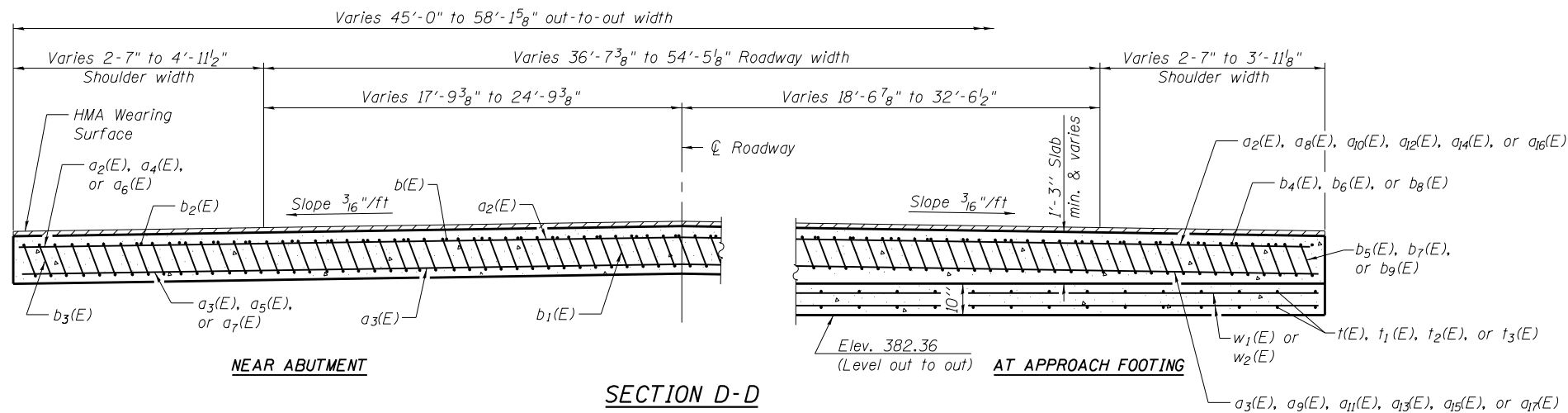
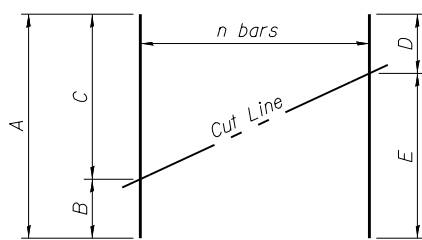


Notes:
 See sheet 9 of 17 for Detail A.
 Approach slab concrete shall be paid for as Concrete Superstructure.
 Approach footing concrete shall be paid for as Concrete Structures.
 Reinforcement shall be paid for as Reinforcement Bars, Epoxy Coated.
 For $v_1(E)$ bar details, see sheet 13 of 17.
 The approach footing maximum applied service bearing pressure (Q_{max}) = 2.0 ksf.
 Cost of excavation for approach footing included with Concrete Structures.
 For Granular Backfill for Structures and drainage treatment details, see sheet 2 of 17.



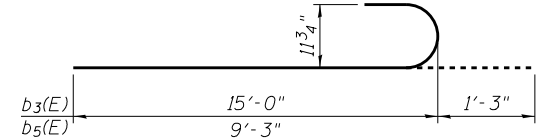
**SOUTH APPROACH
BILL OF MATERIAL**

Bar	No.	Size	Length	Shape
$a_2(E)$	50	#4	23'-7"	—
$a_3(E)$	92	#5	23'-10"	—
$a_4(E)$	1	#4	7'-1"	—
$a_5(E)$	1	#5	7'-7"	—
$a_6(E)$	13	#4	7'-2"	—
$a_7(E)$	24	#5	7'-10"	—
$a_8(E)$	1	#4	20'-6"	—
$a_9(E)$	1	#5	21'-0"	—
$a_{10}(E)$	4	#4	16'-2"	—
$a_{11}(E)$	9	#5	17'-4"	—
$a_{12}(E)$	2	#4	13'-8"	—
$a_{13}(E)$	2	#5	14'-7"	—
$a_{14}(E)$	5	#4	16'-9"	—
$a_{15}(E)$	10	#5	18'-6"	—
$a_{16}(E)$	1	#4	18'-3"	—
$a_{17}(E)$	1	#5	18'-3"	—
$b(E)$	37	#4	29'-8"	—
$b_1(E)$	109	#9	29'-9"	—
$b_2(E)$	3	#4	15'-0"	—
$b_3(E)$	8	#9	16'-3"	—
$b_4(E)$	6	#4	8'-0"	—
$b_5(E)$	16	#9	10'-6"	—
$b_6(E)$	6	#4	29'-1"	—
$b_7(E)$	8	#9	41'-7"	—
$b_8(E)$	3	#4	8'-7"	—
$b_9(E)$	4	#5	14'-7"	—
$t(E)$	118	#4	9'-9"	—
$t_1(E)$	4	#4	11'-0"	—
$t_2(E)$	8	#4	12'-4"	—
$t_3(E)$	2	#4	10'-4"	—
$w_1(E)$	80	#5	28'-1"	—
$w_2(E)$	40	#5	19'-10"	—
Concrete Superstructure		Cu. Yd.	71.2	
Concrete Structures		Cu. Yd.	20.5	
Reinforcement Bars, Epoxy Coated		Pound	22130	
HMA Surface Course		Ton	11	

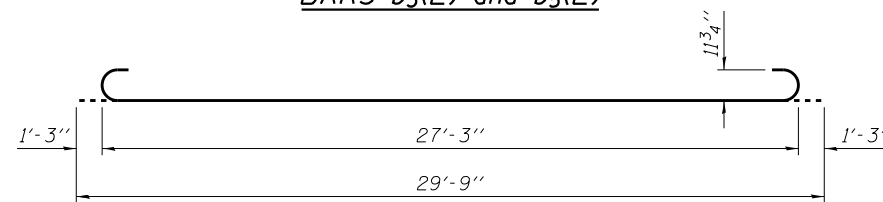


BAR CUTTING DIAGRAM
Order bars full length and cut as shown above.

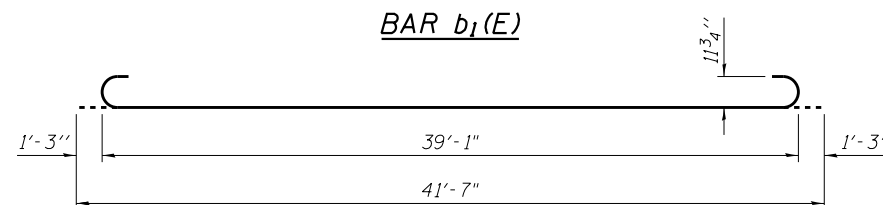
Bar	A	B	C	D	E	n
$a_{10}(E)$	16'-2"	4'-1"	12'-1"	8'-7"	7'-7"	4
$a_{11}(E)$	17'-4"	3'-7"	13'-9"	9'-0"	8'-4"	9
$a_{14}(E)$	16'-9"	4'-1"	12'-8"	8'-10"	7'-11"	5
$a_{15}(E)$	18'-6"	4'-5"	14'-1"	9'-6"	9'-0"	10
$b_6(E)$	29'-1"	6'-4"	22'-9"	15'-1"	14'-0"	3
$b_9(E)$	14'-7"	4'-0"	10'-7"	6'-10"	7'-9"	4
$t_1(E)$	11'-0"	3'-0"	8'-0"	4'-6"	6'-6"	2
$t_2(E)$	12'-4"	3'-11"	8'-5"	5'-6"	6'-10"	2



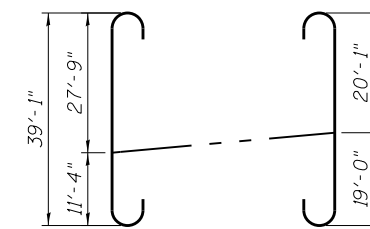
BARS $b_3(E)$ and $b_5(E)$



BAR $b_1(E)$



BAR $b_7(E)$



BAR CUTTING DIAGRAM
Order $b_7(E)$ bars full length and cut as shown above

* Tilt #9 $b_1(E)$, $b_3(E)$, $b_5(E)$, and $b_7(E)$ bars as required to maintain clearance.
 *** Cost included with Concrete Superstructure.

(Sheet 2 of 2)