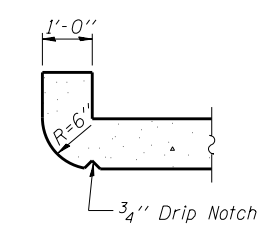
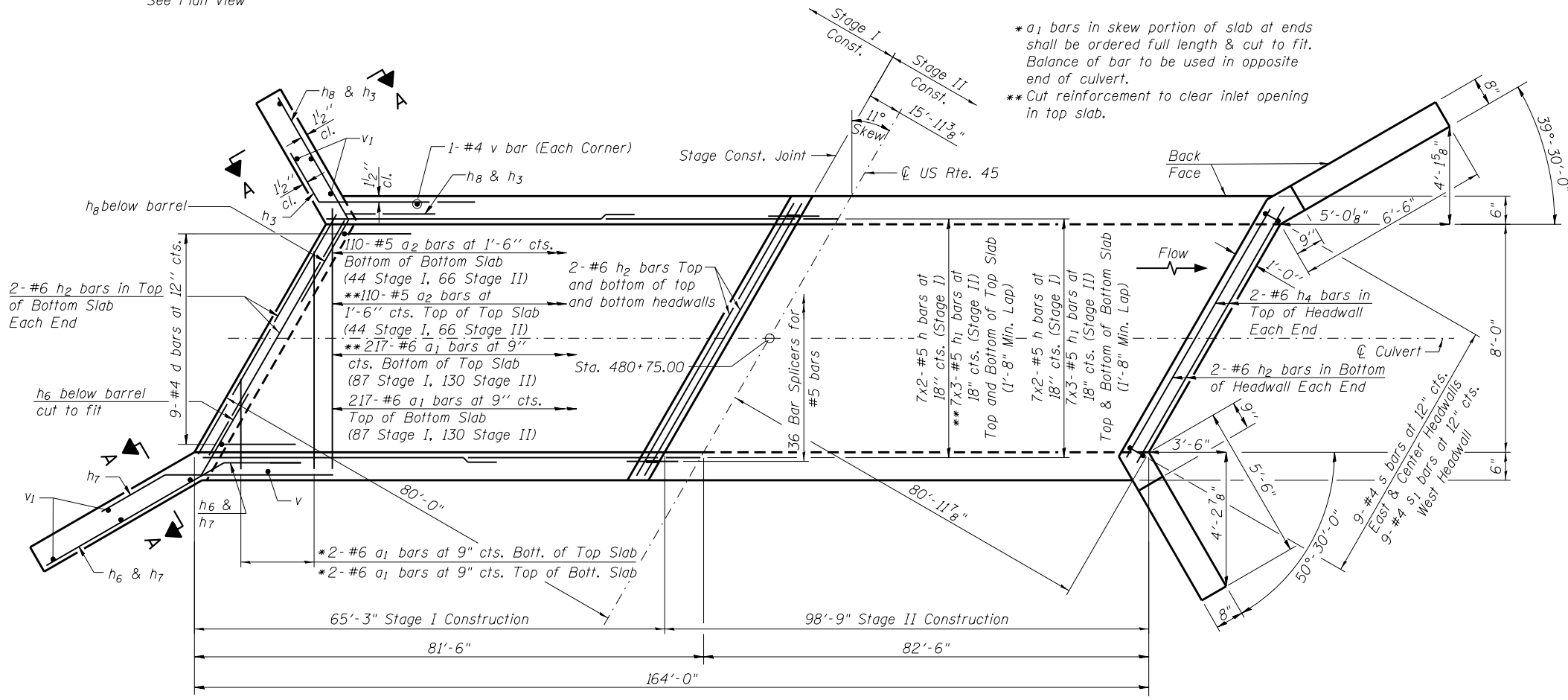


SECTION THRU BARREL



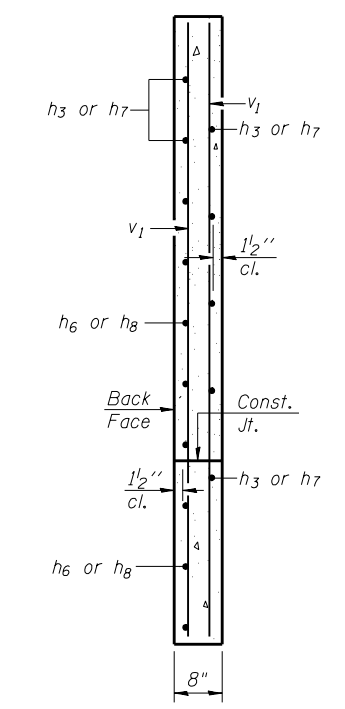
SECTION THRU HEADWALL
(Up Stream End Only)



SHOWING REINFORCEMENT **SHOWING OUTLINES**
PLAN

NOTES

A distance of half the length of the wingwall but not less than six feet of the barrel shall be poured monolithically with the wingwalls.
Bars indicated thus 12 x 4-#5 etc. indicates 12 lines of bars with 4 lengths per line.



SECTION A-A
(Long Wing shown, Short Wing similar)