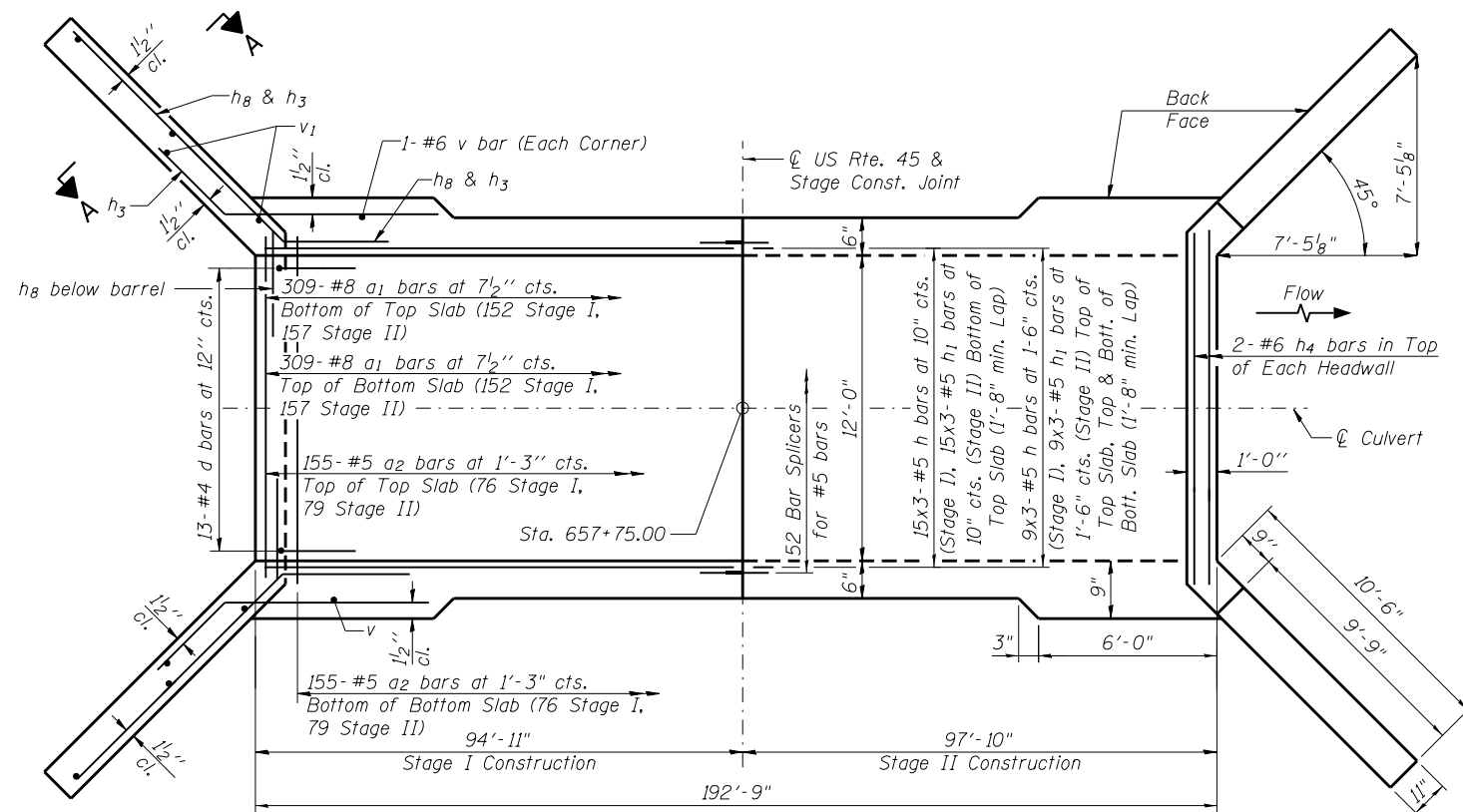


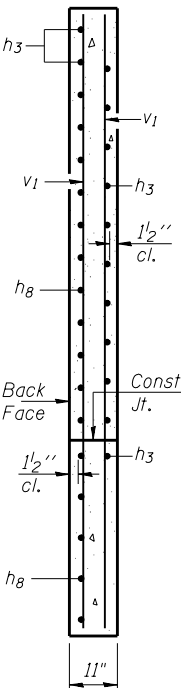
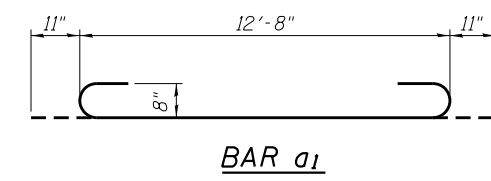
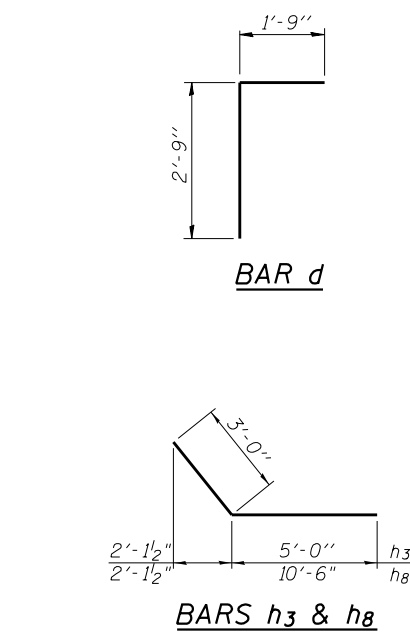
HALF LONG. SECTION HALF ELEVATION



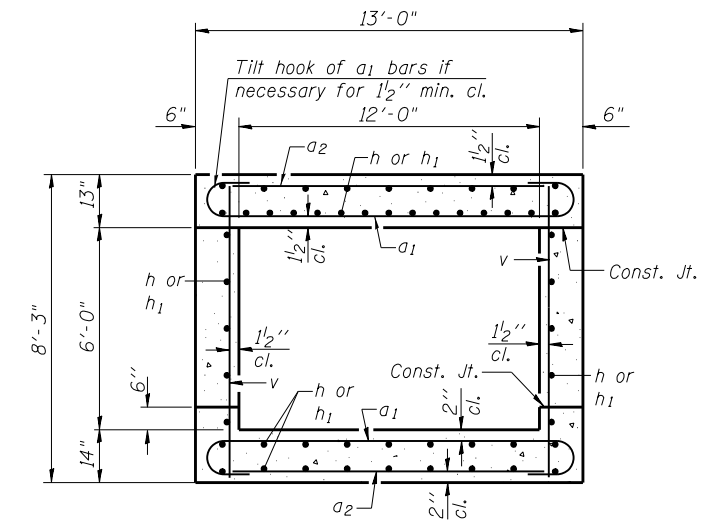
SHOWING REINFORCEMENT SHOWING OUTLINES PLAN

NOTES

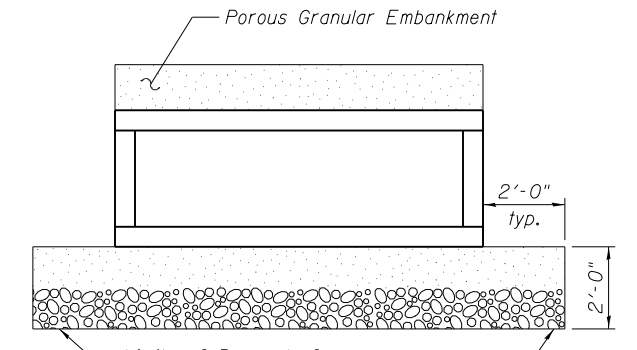
A distance of half the length of the wingwall but not less than six feet of the barrel shall be poured monolithically with the wingwalls.
 Bars indicated thus 12 x 4-#5 etc. indicates 12 lines of bars with 4 lengths per line.



SECTION A-A



SECTION THRU BARREL



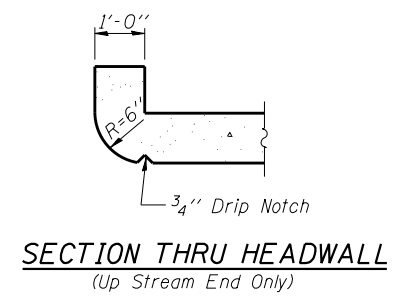
Limits of Removal of Unsuitable Material
 Remove and replace unsuitable materials with Stone Riprap, Class A1 capped with 12" of PGE (CA6).

FILL DETAILS

(Dimensions at Rt. L's to C Structure)

BILL OF MATERIAL

Bar	No.	Size	Length	Shape
a1	618	#8	14'-6"	U
a2	312	#5	12'-8"	—
d	26	#4	4'-6"	L
h	156	#5	32'-9"	—
h1	156	#5	33'-9"	—
h3	64	#6	8'-0"	—
h4	4	#6	12'-6"	—
h8	52	#6	13'-6"	—
v	550	#6	7'-11"	—
v1	16	#4	10'-6"	—
Concrete Box Culverts			Cu. Yd.	268.6
Reinforcement Bars			Pound	47500



SECTION THRU HEADWALL (Up Stream End Only)