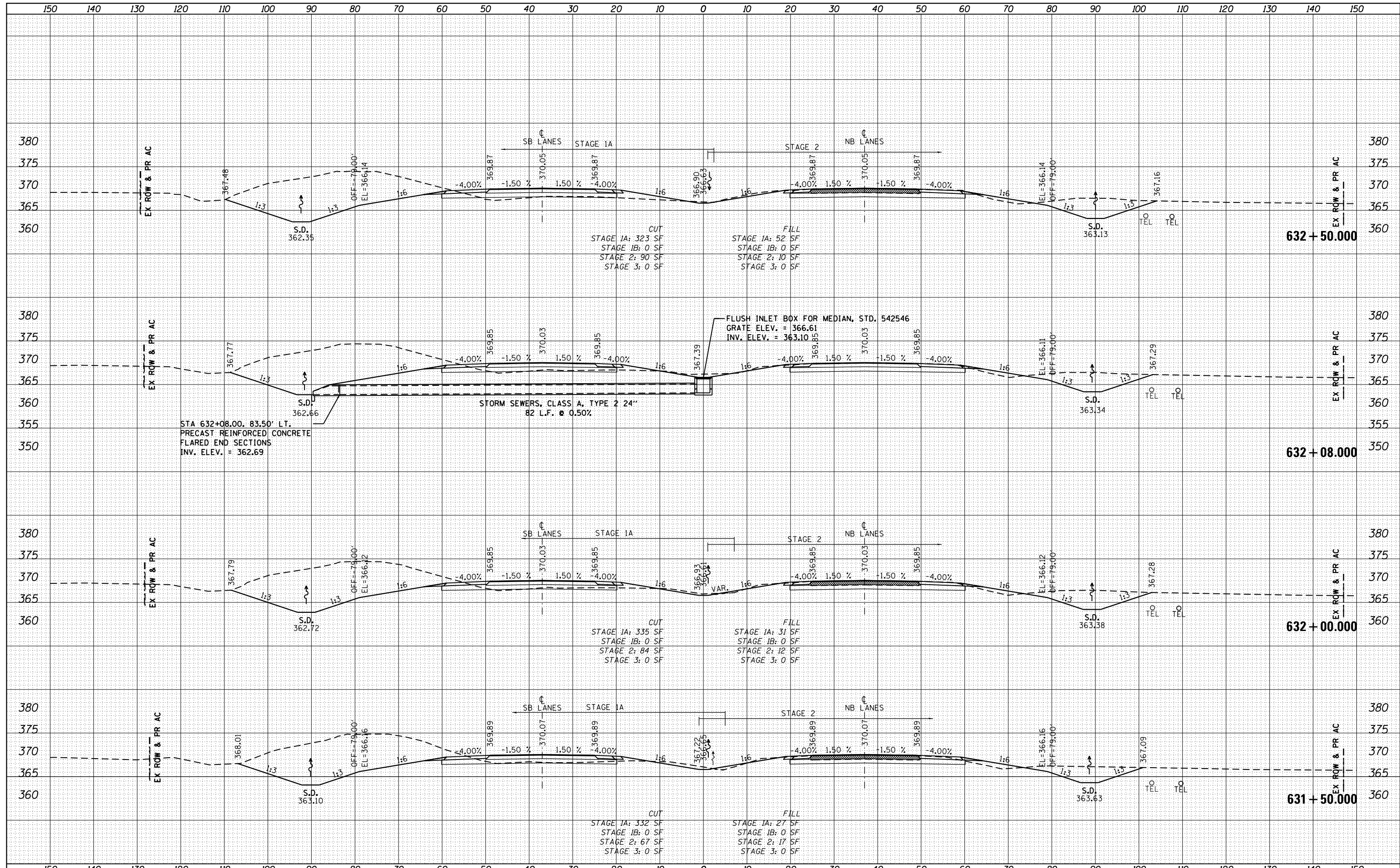


DATE	
BY	
SURVEYED	
PLOTTED	
NOTE BOOK	
AREAS CHECKED	

DATE	
BY	
SURVEYED	
PLOTTED	
NOTE BOOK	
AREAS CHECKED	



FILE NAME =	USER NAME = bemery	DESIGNED -	REVISED -	STATE OF ILLINOIS DEPARTMENT OF TRANSPORTATION	CROSS SECTIONS U.S. 45 (F.A.P. 332)	F.A.P. RTE.	SECTION	COUNTY	TOTAL SHEETS	SHEET NO.
P:\Projects\2011 Projects\11297 - IDOT US45 Ph2	CV\CADD Sheets\1978077-sht-xsc.dgn	DRAWN -	REVISED -			332	(29,30)R-1	SALINE	745	629
Default	PLOT SCALE = 20.0000' / in.	CHECKED -	REVISED -			CONTRACT NO. 78077				
	PLOT DATE = 4/30/2014	DATE -	REVISED -			ILLINOIS FED. AID PROJECT				