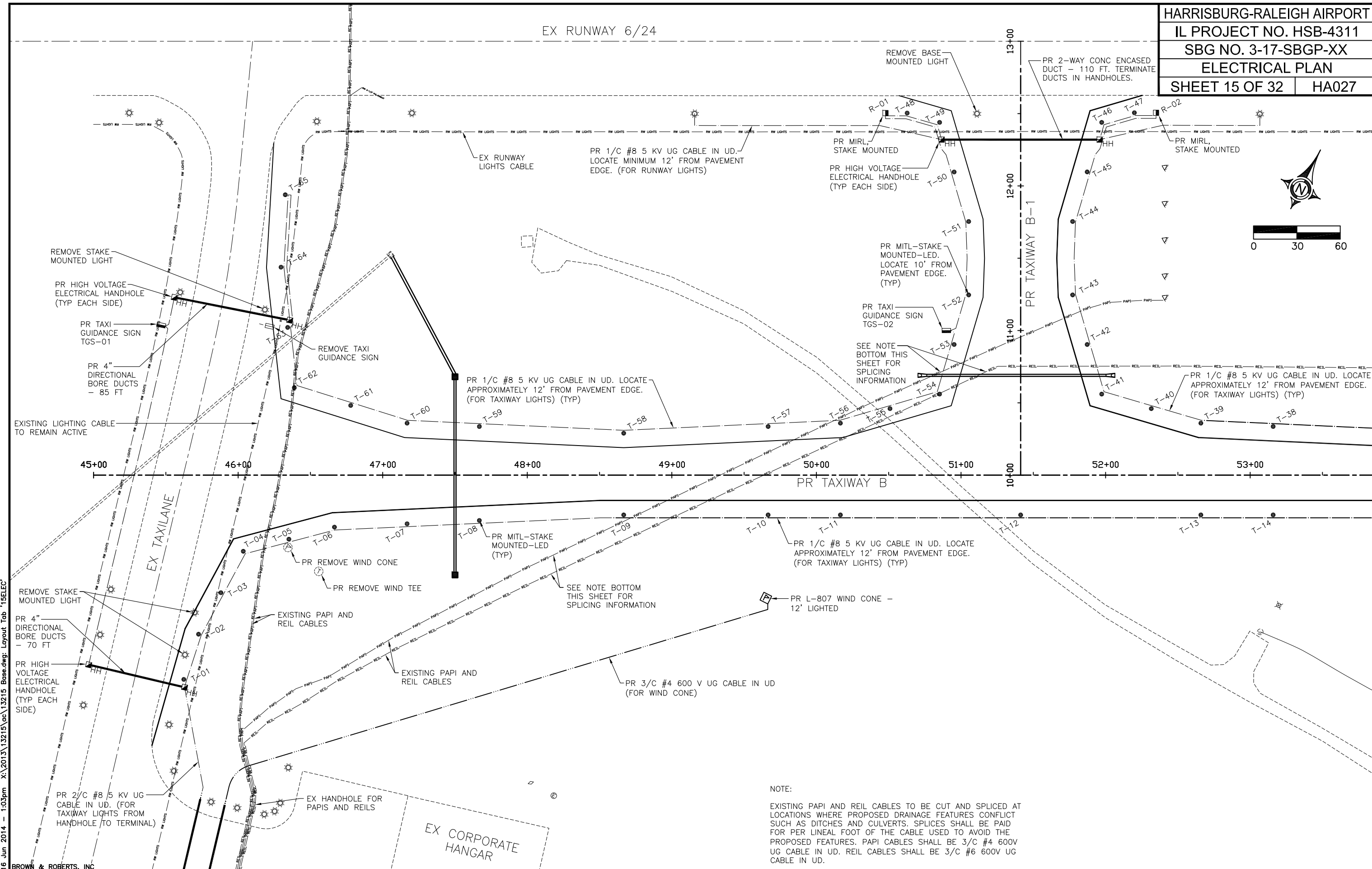
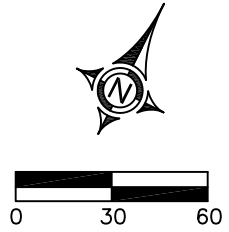


EX RUNWAY 6/24



NOTE:
 EXISTING PAPI AND REIL CABLES TO BE CUT AND SPLICED AT LOCATIONS WHERE PROPOSED DRAINAGE FEATURES CONFLICT SUCH AS DITCHES AND CULVERTS. SPLICES SHALL BE PAID FOR PER LINEAL FOOT OF THE CABLE USED TO AVOID THE PROPOSED FEATURES. PAPI CABLES SHALL BE 3/4 #4 600V UG CABLE IN UD. REIL CABLES SHALL BE 3/4 #6 600V UG CABLE IN UD.

16 Jun 2014 - 1:03pm X:\2013\13215\13215.dwg Base.dwg Layout Tab '15ELEC'