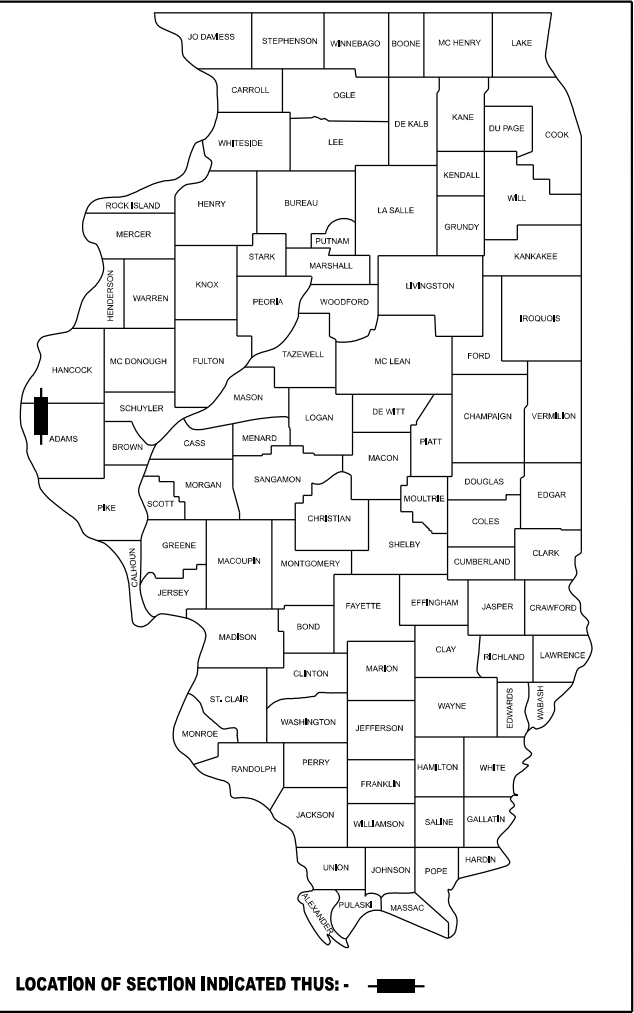


STATE OF ILLINOIS
DEPARTMENT OF TRANSPORTATION

F.A.P. RTE.	SECTION	COUNTY	TOTAL SHEETS	SHEET NO.
506	126B-2(BDR,BRR,BJR)	ADAMS	12	1
		ILLINOIS	CONTRACT NO. 72949	

D-96-042-25



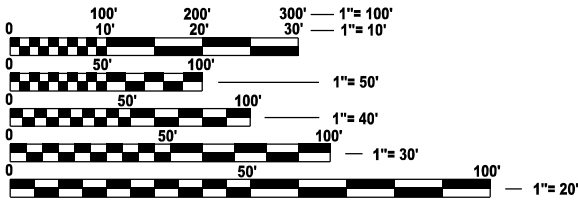
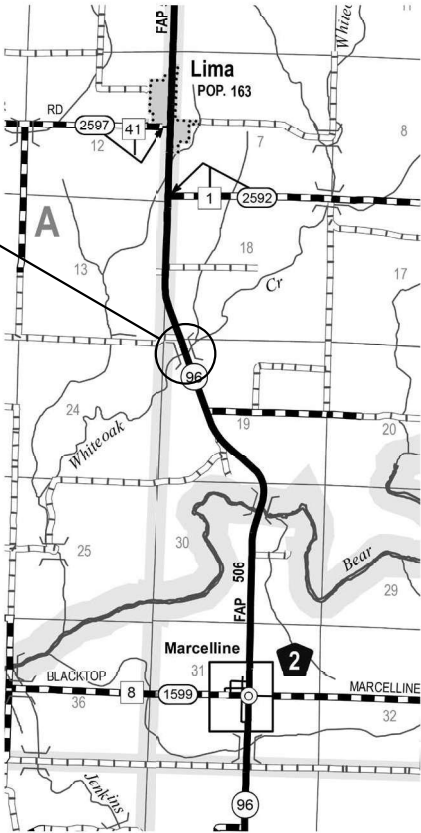
FOR INDEX OF SHEETS, SEE SHEET NO. 2

PROPOSED
HIGHWAY PLANS

FAP ROUTE 506 (IL 96)
SECTION 126B-2(BDR,BRR,BJR)
PROJECT (STATE ONLY)
BRIDGE JOINT REMOVAL
ADAMS COUNTY
C-96-078-25



PROJECT LOCATION:
SN 001-0074
IL 96 OVER
WHITE OAK CREEK
1.6 MI S LIMA



FULL SIZE PLANS HAVE BEEN PREPARED USING STANDARD
ENGINEERING SCALES. REDUCED SIZED PLANS WILL NOT
CONFORM TO STANDARD SCALES. IN MAKING MEASUREMENTS
ON REDUCED PLANS, THE ABOVE SCALES MAY BE USED.

J.U.L.I.E.
JOINT UTILITY LOCATION INFORMATION FOR EXCAVATION
1-800-892-0123
OR 811

PROJECT ENGINEER: BRANDON DUDLEY - (217) 785-9290
PROJECT MANAGER

CONTRACT NO. 72949

GROSS LENGTH = 79 FT. = 0.01 MILE
NET LENGTH = 79 FT. = 0.01 MILE

STATE OF ILLINOIS
DEPARTMENT OF TRANSPORTATION

SUBMITTED May 7, 2025
Lora Ramsey REGIONAL ENGINEER
June 27, 2025
See E. Etk ENGINEER OF DESIGN AND ENVIRONMENT
June 27, 2025
Chadley DIRECTOR OF HIGHWAYS PROJECT IMPLEMENTATION

PRINTED BY THE AUTHORITY
OF THE STATE OF ILLINOIS

INDEX OF SHEETS

- 1 COVER SHEET
- 2 INDEX, STANDARDS, GENERAL NOTES, & SIGNATURES
- 3-4 SUMMARY OF QUANTITIES
- 5-7 TRAFFIC CONTROL PLAN
- 8-12 BRIDGE PLANS, SN 001-0074

HIGHWAY STANDARDS

- 000001-08
- 001001-02
- 001006
- 701001-02
- 701006-05
- 701201-05
- 701301-04
- 701321-19
- 701901-10
- 704001-08
- 780001-05
- 782006-01

GENERAL NOTES:

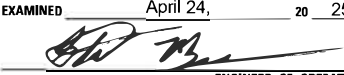
STATE OF ILLINOIS
DEPARTMENT OF TRANSPORTATION
DIVISION OF HIGHWAYS
DISTRICT 6

EXAMINED

April 24,

20

25



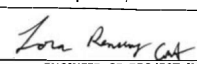
ENGINEER OF OPERATIONS

EXAMINED

April 28,

20

25



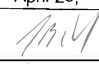
ENGINEER OF PROJECT IMPLEMENTATION

EXAMINED

April 28,

20

25



ENGINEER OF PROGRAM DEVELOPMENT

REV - MS

MODEL: INDEX [Sheet]
FILE NAME: c:\pw\work\pwrtd\brandon.dudley\mtd1098331\72949 plansheet.dgn

	USER NAME = brandon.dudley	DESIGNED -	REVISED -	STATE OF ILLINOIS DEPARTMENT OF TRANSPORTATION	INDEX OF SHEETS, GENERAL NOTES HIGHWAY STANDARDS, & SIGNATURES	SCALE:	SHEET 1	OF 1	SHEETS	STA.	TO STA.	F.A.P RTE.	SECTION	COUNTY	TOTAL SHEETS	SHEET NO.
		DRAWN -	REVISED -									506	126B-2(BDR,BRR,BJR)	ADAMS	12	2
		CHECKED -	REVISED -									CONTRACT NO. 72949				
	PLOT DATE = 5/6/2025	DATE -	REVISED -									ILLINOIS FED. AID PROJECT				

MODEL: .sxd [Sheet]
FILE NAME: c:\pwworking\brandon.dudley\mtd1090331\72949 plansheet.dgn

				0-02180-6007
				SN 001-0074
				100% STATE
				BRIDGE
				0047-RURAL
				ADAMS
50102400	CONCRETE REMOVAL	CU YD	30.7	30.7
50300255	CONCRETE SUPERSTRUCTURE	CU YD	44.1	44.1
50300300	PROTECTIVE COAT	SQ YD	41	41
50800205	REINFORCEMENT BARS, EPOXY COATED	POUND	4470	4470
50800515	BAR SPLICERS	EACH	58	58
67100100	MOBILIZATION	L SUM	1	1
70100405	TRAFFIC CONTROL AND PROTECTION, STANDARD 701321	EACH	1	1
70100450	TRAFFIC CONTROL AND PROTECTION, STANDARD 701201	L SUM	1	1
70106500	TEMPORARY BRIDGE TRAFFIC SIGNALS	EACH	1	1
70106700	TEMPORARY RUMBLE STRIPS	EACH	6	6
70107005	PAVEMENT MARKING BLACKOUT TAPE, 5"	FOOT	760	760
70107025	CHANGEABLE MESSAGE SIGN	CAL DAY	135	135
70300150	SHORT TERM PAVEMENT MARKING REMOVAL	SQ FT	317	317
70400100	TEMPORARY CONCRETE BARRIER	FOOT	400	400

REV - MS

	USER NAME = brandon.dudley	DESIGNED -	REVISED -	STATE OF ILLINOIS DEPARTMENT OF TRANSPORTATION	SUMMARY OF QUANTITIES				F.A.P. RTE.	SECTION	COUNTY	TOTAL SHEETS	SHEET NO.
		DRAWN -	REVISED -						506	126B-2(BDR,BRR,BJR)	ADAMS	12	3
		CHECKED -	REVISED -						CONTRACT NO. 72949				
	PLOT DATE = 3/31/2025	DATE -	REVISED -		SCALE:	SHEET 1	OF 2	SHEETS	STA.	TO STA.	ILLINOIS FED. AID PROJECT		

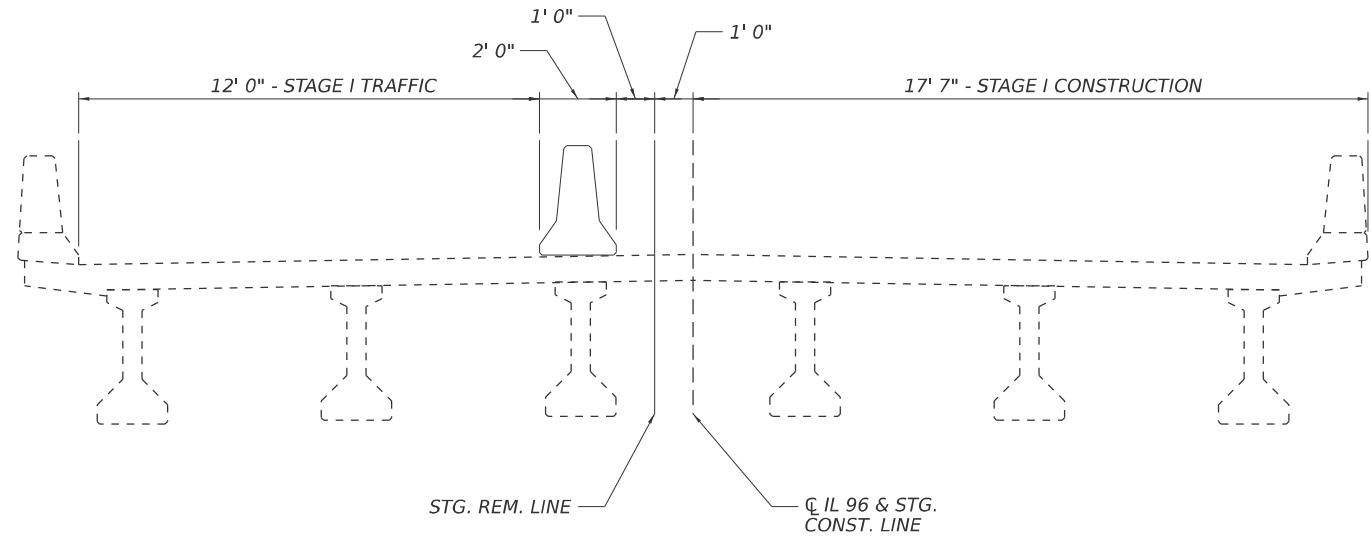
MODEL: sop-1 (Sheet)
FILE NAME: c:\pw_work\pwtdtd\dudley\mtd1095331\72949 plansheet.dgn

				0-02180-6007
				SN 001-0074
				100% STATE
				BRIDGE
				0047-RURAL
				ADAMS
70400200	RELOCATE TEMPORARY CONCRETE BARRIER	FOOT	400	400
70600250	IMPACT ATTENUATORS, TEMPORARY (NON-REDIRECTIVE), TEST LEVEL 3	EACH	2	2
70600352	IMPACT ATTENUATORS, RELOCATE (NON-REDIRECTIVE, NARROW), TEST LEVEL 3	EACH	2	2
X7200201	WIDTH RESTRICTION SIGNING	L SUM	1	1
Z0001800	APPROACH SLAB REPAIR (PARTIAL DEPTH)	SQ YD	7	7
Z0012500	CONCRETE CURB REPAIR	FOOT	72	72
Z0012754	STRUCTURAL REPAIR OF CONCRETE (DEPTH EQUAL TO OR LESS THAN 5 INCHES)	SQ FT	10	10
Z0016001	DECK SLAB REPAIR (FULL DEPTH, TYPE I)	SQ YD	5	5
Z0016200	DECK SLAB REPAIR (PARTIAL)	SQ YD	29	29
Z0032500	JOINT SEALING (PATCHES)	FOOT	800	800

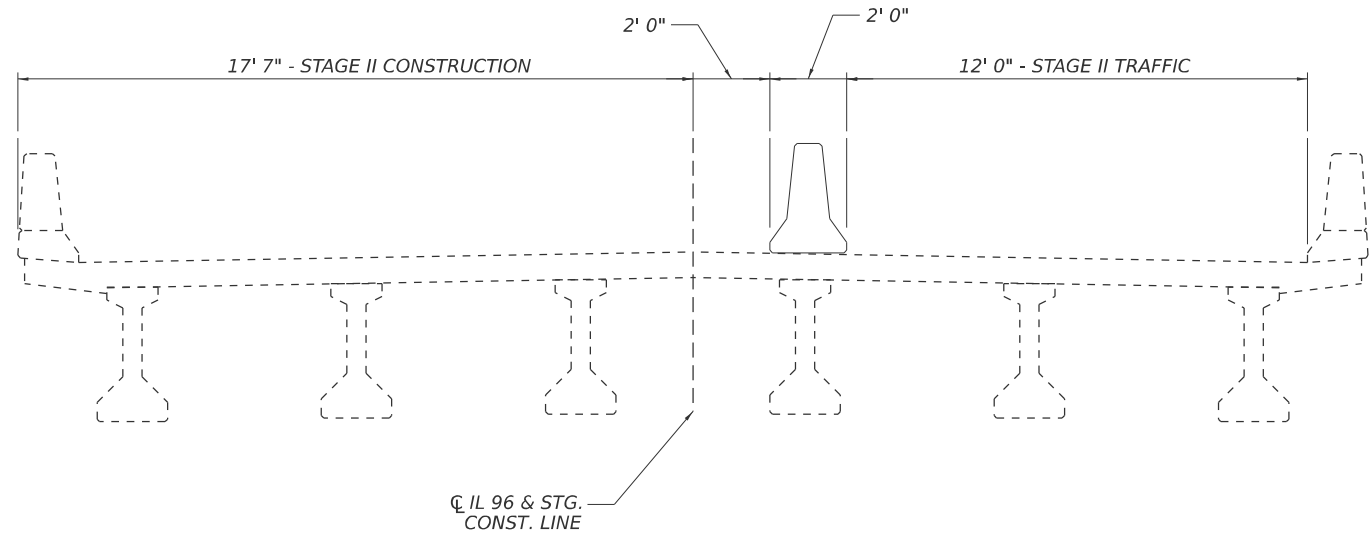
* SPECIALTY ITEM

REV - MS

	USER NAME = brandon.dudley	DESIGNED -	REVISED -	STATE OF ILLINOIS DEPARTMENT OF TRANSPORTATION	SUMMARY OF QUANTITIES			F.A.P RTE.	SECTION	COUNTY	TOTAL SHEETS	SHEET NO.
		DRAWN -	REVISED -					506	126B-2(BDR,BRR,BJR)	ADAMS	12	4
		CHECKED -	REVISED -					CONTRACT NO. 72949				
	PLOT DATE = 3/31/2025	DATE -	REVISED -		SCALE:	SHEET 2	OF 2	SHEETS	STA.	TO STA.	ILLINOIS FED. AID PROJECT	



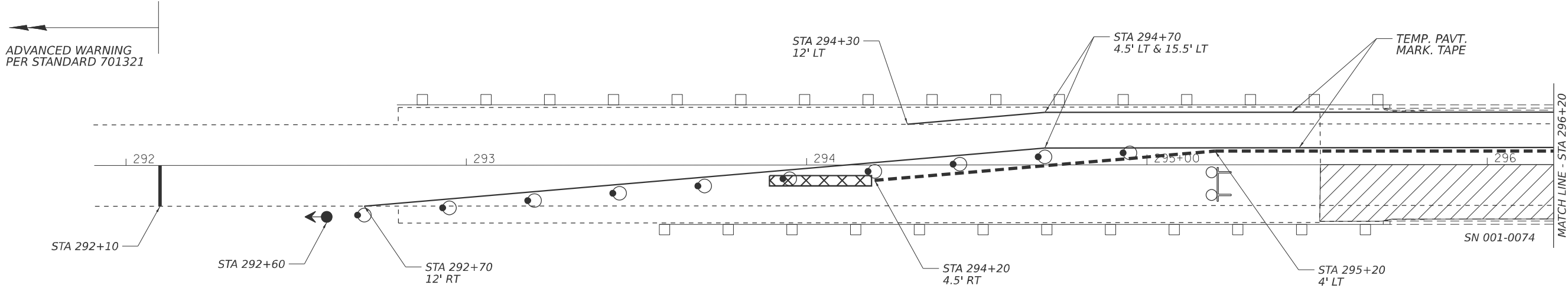
STAGE I TRAFFIC - LOOKING NORTH



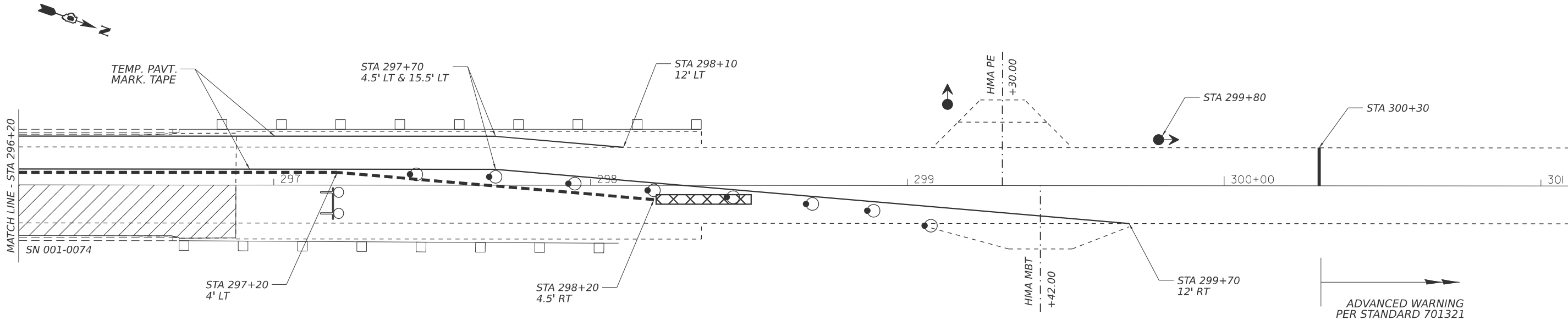
STAGE II TRAFFIC - LOOKING NORTH

MODEL: traffic [Sheet]
FILE NAME: c:\p\work\pwt\tdudley\cml\1095331\72949 plansheet.dgn

	USER NAME = brandon.dudley	DESIGNED -	REVISED -	STATE OF ILLINOIS DEPARTMENT OF TRANSPORTATION	TRAFFIC STAGING DETAIL			F.A.P RTE.	SECTION	COUNTY	TOTAL SHEETS	SHEET NO.
		DRAWN -	REVISED -					506	126B-2(BDR,BRR,BJR)	ADAMS	12	5
		CHECKED -	REVISED -					CONTRACT NO. 72949				
	PLOT DATE = 3/31/2025	DATE -	REVISED -		SCALE:	SHEET 1	OF 3 SHEETS	STA.	TO STA.	ILLINOIS FED. AID PROJECT		



STAGE I TRAFFIC - PARTIAL PLAN



STAGE I TRAFFIC - PARTIAL PLAN

SYMBOLS

- WORK AREA
- DRUM WITH STEADY BURN BI-DIRECTIONAL LIGHT
- TRAFFIC SIGNAL
- TYPE III BARRICADE WITH FLASHING LIGHTS
- TEMPORARY CONCRETE BARRIER
- IMPACT ATTENUATOR

- TRAFFIC CONTROL NOTES:
- Traffic control devices not shown in this detail shall be per standard 701321. Devices and temporary pavement markings shown in this detail shall be included in the cost of TRAFFIC CONTROL AND PROTECTION, STANDARD 701321. Impact attenuators temporary rumble strips, temporary concrete barrier, and temporary traffic signals shall be paid separately.
 - Temporary concrete barrier offsets given in this detail refer to the edge of the barrier nearest to live traffic.
 - A third traffic signal shall be provided for the private entrance at STA 299+30, cost included with TEMPORARY BRIDGE TRAFFIC SIGNALS.

MODEL: traffic-1 [Sheet]
FILE NAME: c:\p\work\pwork\dudley\mtd1095331\72949 plansheet.dgn

USER NAME	= brandon.dudley	DESIGNED -	REVISED -
		DRAWN -	REVISED -
		CHECKED -	REVISED -
PLOT DATE	= 3/31/2025	DATE -	REVISED -

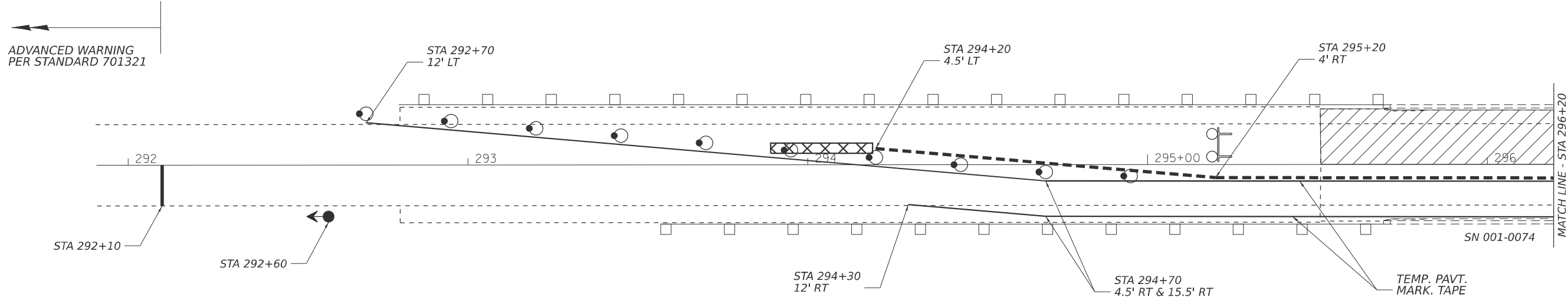
STATE OF ILLINOIS
DEPARTMENT OF TRANSPORTATION

STAGE I TRAFFIC CONTROL PLAN

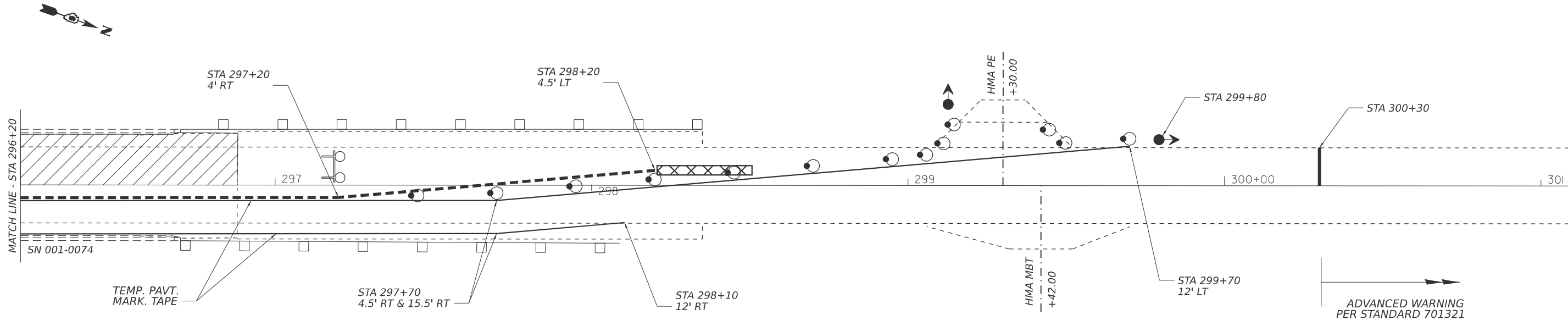
SCALE: SHEET 2 OF 3 SHEETS STA. TO STA.

F.A.P RTE.	SECTION	COUNTY	TOTAL SHEETS	SHEET NO.
506	126B-2(BDR,BRR,BJR)	ADAMS	12	6
CONTRACT NO. 72949				
ILLINOIS FED. AID PROJECT				

MODEL: traffic-2 [Sheet]
FILE NAME: c:\p\work\pwork\dudley\cml\1095331\72949 plansheet.dgn



STAGE II TRAFFIC - PARTIAL PLAN



STAGE II TRAFFIC - PARTIAL PLAN

SYMBOLS

- WORK AREA
- DRUM WITH STEADY BURN
BI-DIRECTIONAL LIGHT
- TRAFFIC SIGNAL
- TYPE III BARRICADE WITH
FLASHING LIGHTS
- TEMPORARY CONCRETE BARRIER
- IMPACT ATTENUATOR

TRAFFIC CONTROL NOTES:

- Traffic control devices not shown in this detail shall be per standard 701321. Devices and temporary pavement markings shown in this detail shall be included in the cost of TRAFFIC CONTROL AND PROTECTION, STANDARD 701321. Impact attenuators temporary rumble strips, temporary concrete barrier, and temporary traffic signals shall be paid separately.
- Temporary concrete barrier offsets given in this detail refer to the edge of the barrier nearest to live traffic.
- A third traffic signal shall be provided for the private entrance at STA 299+30, cost included with TEMPORARY BRIDGE TRAFFIC SIGNALS.

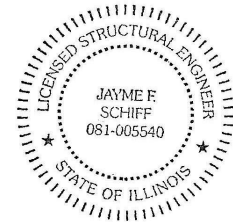
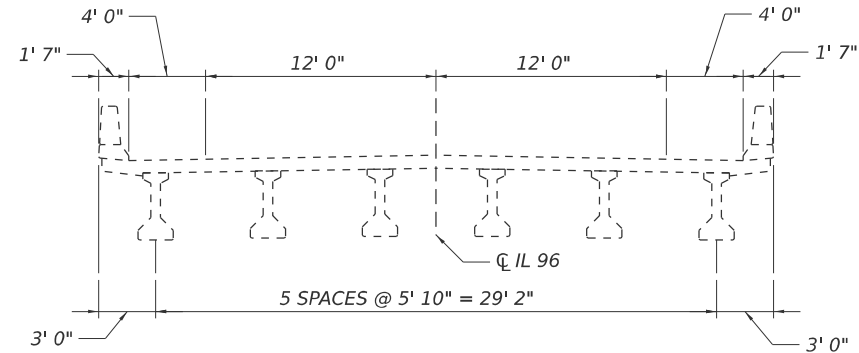
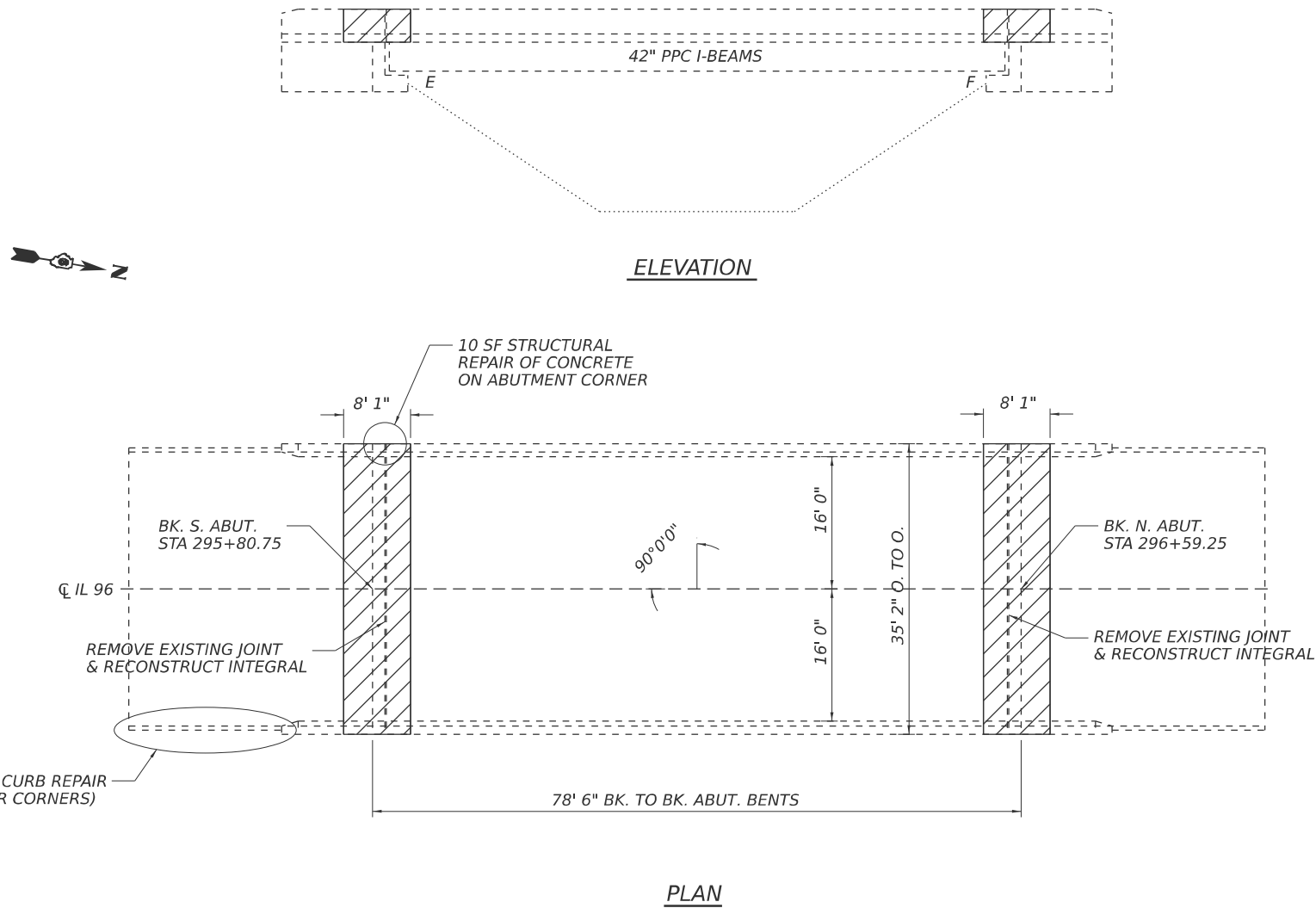
PLOT DATE	USER NAME	DESIGNED	REVISED
	= brandon.dudley	-	-
	DRAWN	-	-
	CHECKED	-	-
DATE	3/31/2025	REVIS	REVISED
		-	-

STATE OF ILLINOIS
DEPARTMENT OF TRANSPORTATION

STAGE II TRAFFIC CONTROL PLAN

SCALE: SHEET 3 OF 3 SHEETS STA. TO STA.

F.A.P RTE.	SECTION	COUNTY	TOTAL SHEETS	SHEET NO.
506	126B-2(BDR,BRR,BJR)	ADAMS	12	7
CONTRACT NO. 72949				
ILLINOIS FED. AID PROJECT				



EXPIRES 11-30-2026

Jayme F. Schiff

STRUCTURE GENERAL NOTES:

PLAN DIMENSIONS AND DETAILS RELATIVE TO THE EXISTING STRUCTURE HAVE BEEN TAKEN FROM EXISTING PLANS AND ARE SUBJECT TO NOMINAL CONSTRUCTION VARIATIONS. THE CONTRACTOR SHALL FIELD VERIFY EXISTING DIMENSIONS AND DETAILS AFFECTING NEW CONSTRUCTION AND MAKE NECESSARY APPROVED ADJUSTMENTS PRIOR TO CONSTRUCTION OR ORDERING OF MATERIALS. SUCH VARIATIONS SHALL NOT BE CAUSE FOR ADDITIONAL COMPENSATION FOR A CHANGE IN THE SCOPE OF WORK, HOWEVER, THE CONTRACTOR WILL BE PAID FOR THE QUANTITY ACTUALLY FURNISHED AT THE UNIT PRICE BID FOR THE WORK.

EXISTING REINFORCEMENT BARS EXTENDING INTO THE REMOVAL AREA SHALL BE CLEANED, STRAIGHTENED, AND INCORPORATED INTO THE NEW CONSTRUCTION. ANY REINFORCEMENT BARS THAT ARE DAMAGED DURING CONCRETE REMOVAL SHALL BE REPLACED WITH AN APPROVED BAR SPLICER OR ANCHORAGE SYSTEM. COST INCLUDED WITH CONCRETE REMOVAL.

THE DECK SURFACE SHALL HAVE ITS FINAL FINISH TINED ACCORDING TO ARTICLE ARTICLE 420.09(e)(1) OF THE STANDARD SPECIFICATIONS.

THE ENGINEER SHALL SHOW ACTUAL LOCATIONS AND SIZES OF DECK AND APPROACH REPAIRS ON THE AS BUILT PLANS.

REINFORCEMENT BARS DESGINATED (E) SHALL BE EPOXY COATED.

THE CONTRACTOR SHALL USE EXTREME CARE DURING CONCRETE REMOVAL SO AS NOT TO DAMAGE PPC I-BEAMS.

PROTECTIVE COAT TO BE APPLIED TO AREAS OF NEW CONCRETE ONLY.

ANY LOOSE OR DELAMINATED CONCRETE ON THE BEAM ENDS SHALL BE REMOVED AND SURFACES PREPARED PER THE SPECIAL PROVISION FOR STRUCTURAL REPAIR OF CONCRETE PRIOR TO POURING THE BEAM END ENCASEMENT.

TOTAL BILL OF MATERIAL (001-0074)

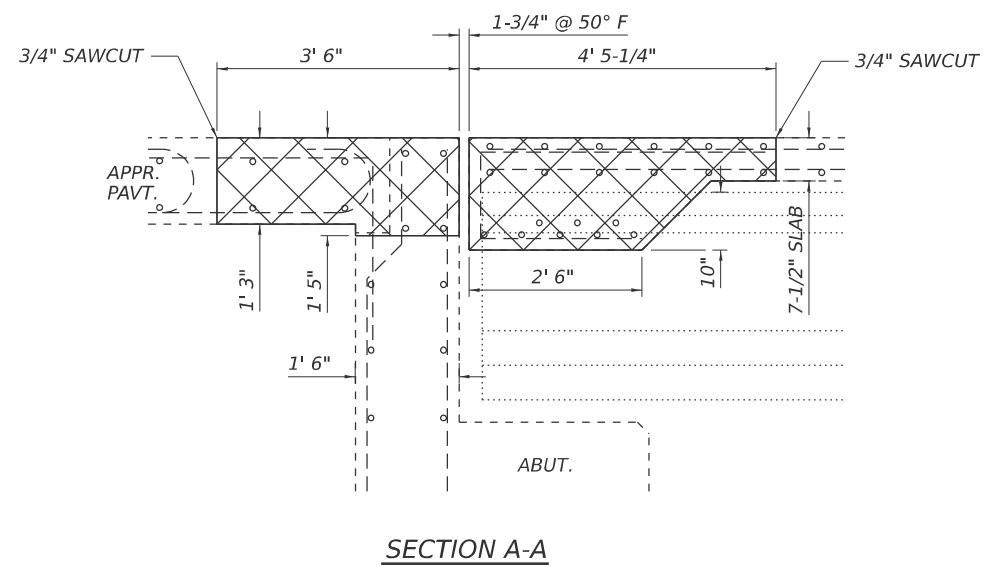
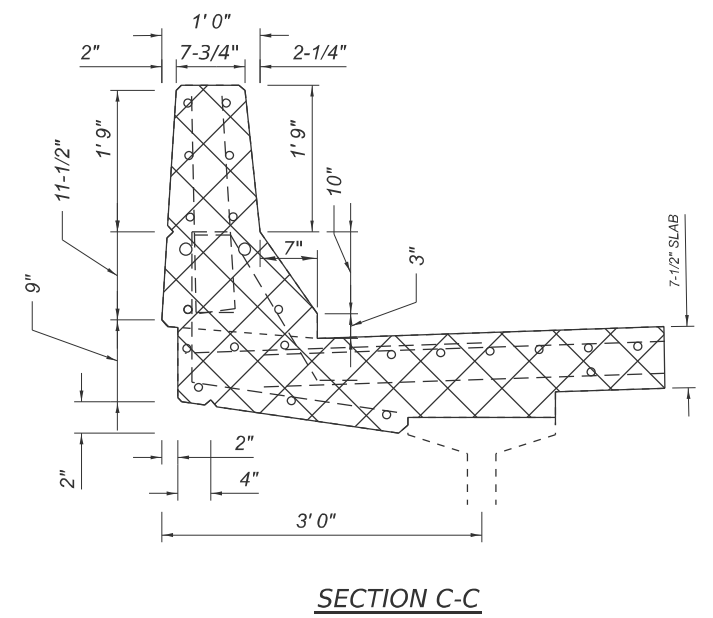
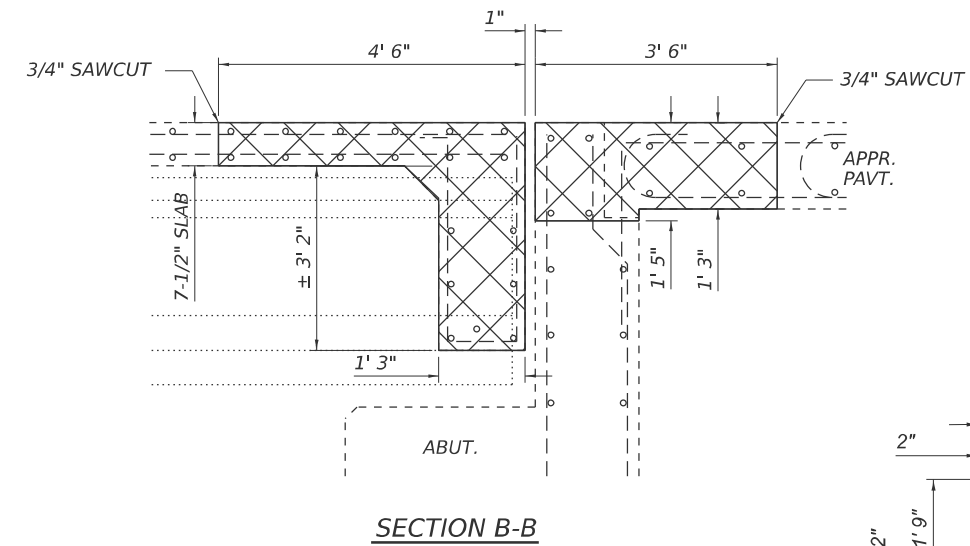
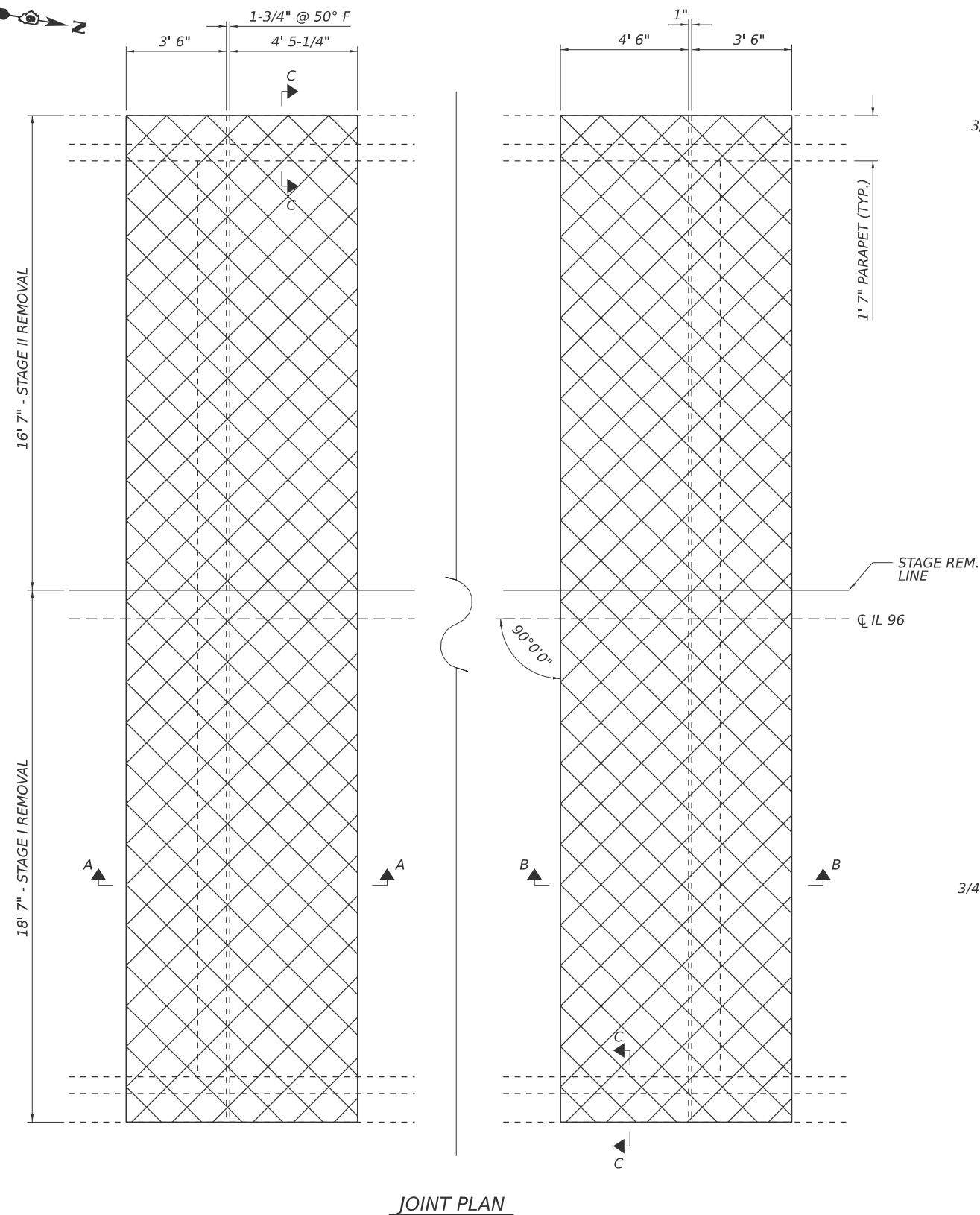
ITEM	UNIT	QUANTITY
Concrete Removal	Cu. Yd.	30.7
Concrete Superstructure	Cu. Yd.	44.1
Reinforcement Bars, Epoxy Coated	Pound	4470
Bar Splicers	Each	58
Approach Slab Repair (Partial Depth)	Sq. Yd.	7
Deck Slab Repair (Partial)	Sq. Yd.	29
* Deck Slab Repair (Full Depth, Type I)	Sq. Yd.	5
Protective Coat	Sq. Yd.	41
Structural Repair Of Concrete (Depth Equal To Or Less Than 5")	Sq. Ft.	10
Joint Sealing (Patches)	Foot	800
Concrete Curb Repair	Foot	72

* Quantity is estimated. Location and size of patches to be determined in the field by the Engineer.

STATE OF ILLINOIS
DEPARTMENT OF TRANSPORTATION

BRIDGE PLAN & ELEVATION
SN 001-0074

F.A.P. RTE.	SECTION	COUNTY	TOTAL SHEETS	SHEET NO.
506	126B-2(BDR,BRR,BJR)	ADAMS	12	8
CONTRACT NO. 72949				
ILLINOIS FED. AID PROJECT				



NOTE: LONGITUDINAL BARS EXTENDING INTO THE REMOVAL AREAS SHALL REMAIN. TRANSVERSE BARS SHALL BE REMOVED.

USER NAME = brandon.dudley	DESIGNED -	REVISED -
	DRAWN -	REVISED -
	CHECKED -	REVISED -
PLOT DATE = 6/24/2025	DATE -	REVISED -

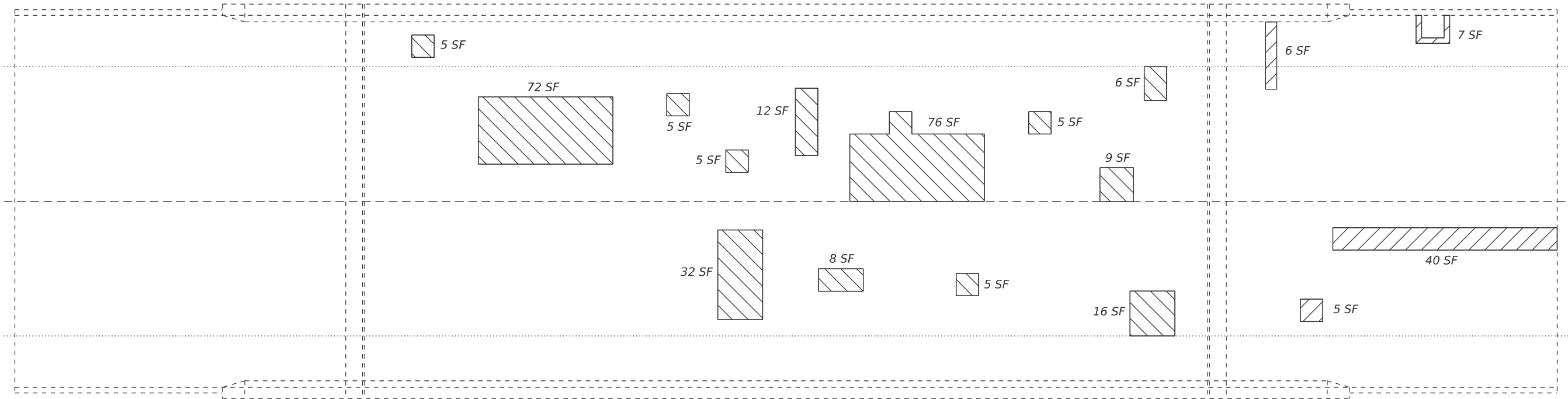
**STATE OF ILLINOIS
DEPARTMENT OF TRANSPORTATION**


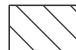
JOINT REMOVAL PLAN
SN 001-0074

SCALE:	SHEET 2	OF 5	SHEETS	STA.	TO STA.
--------	---------	------	--------	------	---------

F.A.P RTE.	SECTION	COUNTY	TOTAL SHEETS	SHEET NO.
506	126B-2(BDR,BRR,BJR)	ADAMS	12	9
CONTRACT NO. 72949				
ILLINOIS		FED. AID PROJECT		

MODEL: bridge-1 [Sheet]
FILE NAME: c:\pw_work\pwidot\dudleyb\m\dt1099331\72949 plansheet.dgn



-  Approach Slab Repair (Partial Depth)
-  Deck Slab Repair (Partial)

Identified patching locations are estimated from a deck survey performed on 3/14/2025. The patching survey is included for information only. The engineer shall lay out actual patch locations in the field.

The engineer shall show actual loactions of deck repairs on as-built plans.

JOINT SEALING (PATCHES) shall be applied in locations as directed in the special provisions, along the entire length of any existing stage construction joints, and along the construction joints between the abutment and approaches.

BILL OF MATERIAL (SN 001-0074)

ITEM	UNIT	QUANTITY
Deck Slab Repair (Partial)	Sq. Yd.	29
* Deck Slab Repair (Full Depth, Type I)	Sq. Yd.	5
Approach Slab Repair (Partial Depth)	Sq. Yd.	7
Joint Sealing (Patches)	Foot	800
Protective Coat	Sq. Yd.	41

* Quantity is estimated. Location and size of patches to be determined in the field by the Engineer.

MODEL: bridge-3 (Sheet)
FILE NAME: c:\p\work\pawid\ddudley\cml\1095331\72949 plansheet.dgn

USER NAME = brandon.dudley	DESIGNED -	REVISED -
	DRAWN -	REVISED -
	CHECKED -	REVISED -
PLOT DATE = 3/31/2025	DATE -	REVISED -

STATE OF ILLINOIS
DEPARTMENT OF TRANSPORTATION

SLAB REPAIR PLAN
SN 001-0074

SCALE: SHEET 4 OF 5 SHEETS STA. TO STA.

F.A.P. RTE.	SECTION	COUNTY	TOTAL SHEETS	SHEET NO.
506	126B-2(BDR,BRR,BJR)	ADAMS	12	11
		CONTRACT NO. 72949		
		ILLINOIS	FED. AID PROJECT	

MODEL: bridge-4 [Sheet]
FILE NAME: c:\p\work\p\w\td\du\du\c\m\1095331\72949 plansheet.dgn

BSD-1

5-15-2023

USER NAME	= brandon.dudley	DESIGNED	-	REVISED	-
		DRAWN	-	REVISED	-
		CHECKED	-	REVISED	-
PLOT DATE	= 3/31/2025	DATE	-	REVISED	-

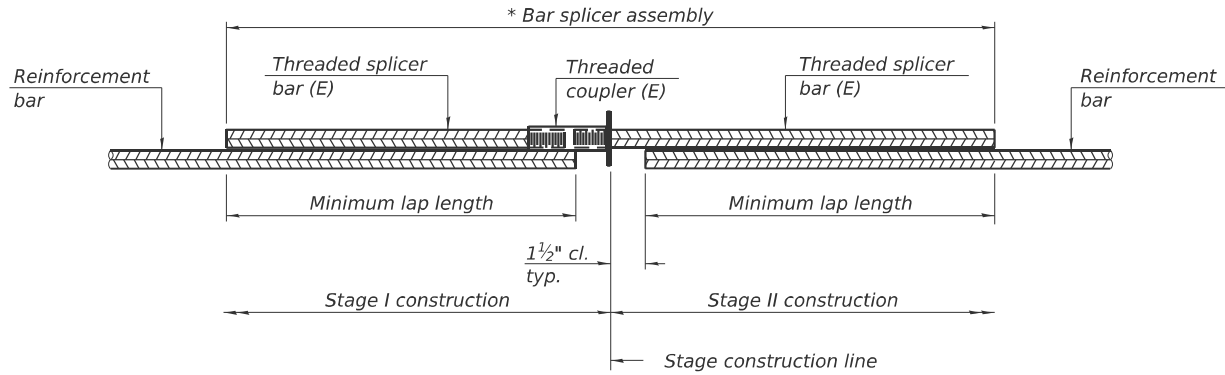
STATE OF ILLINOIS
DEPARTMENT OF TRANSPORTATION

BAR SPLICER ASSEMBLY AND MECHANICAL SPLICER DETIALS
SN 001-0074

SCALE: SHEET 5 OF 5 SHEETS STA. TO STA.

F.A.P. RTE.	SECTION	COUNTY	TOTAL SHEETS	SHEET NO.
506	126B-2(BDR,BRR,BJR)	ADAMS	12	12
CONTRACT NO. 72949				
ILLINOIS FED. AID PROJECT				

Notes:
Splicer bars shall be deformed with threaded ends and have a minimum 60 ksi yield strength.
All reinforcement shall be lapped and tied to the splicer bars.
Bar splicer assemblies shall be epoxy coated according to the requirements for reinforcement bars. See Section 508 of the Standard Specifications.
See approved list of bar splicer assemblies and mechanical splicers for alternatives.



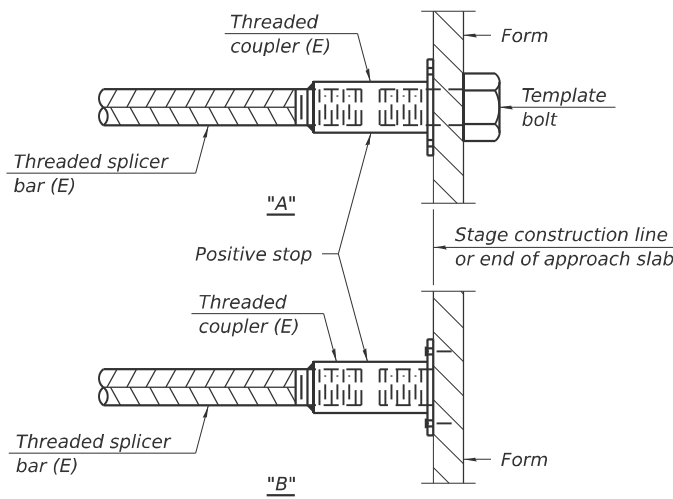
STANDARD BAR SPLICER ASSEMBLY PLAN

Only bar splicer assemblies as presented on the approved QPL list may be used.

Threaded splicer bar length = min. lap length + 1½" + thread length

* Epoxy not required on Bar Splicer Assembly components used in conjunction with black bars.

Location	Bar size	No. assemblies required	Minimum lap length
Abut. Jts.	#5	58	3'-6"

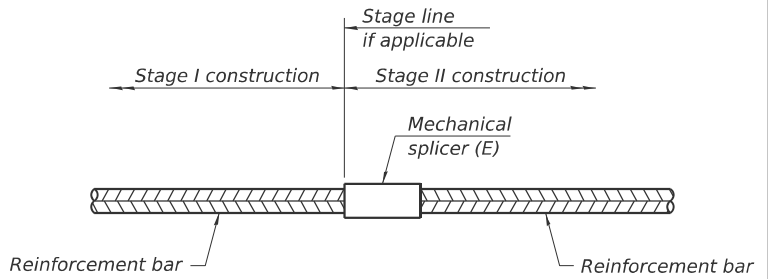


INSTALLATION AND SETTING METHODS

"A" : Set bar splicer assembly by means of a template bolt.

"B" : Set bar splicer assembly by nailing to wood forms or cementing to steel forms.

(E) : Indicates epoxy coating.



STANDARD MECHANICAL SPLICER

Location	Bar size	No. assemblies required