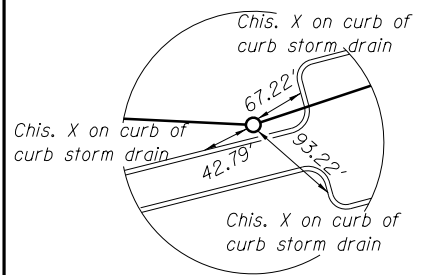
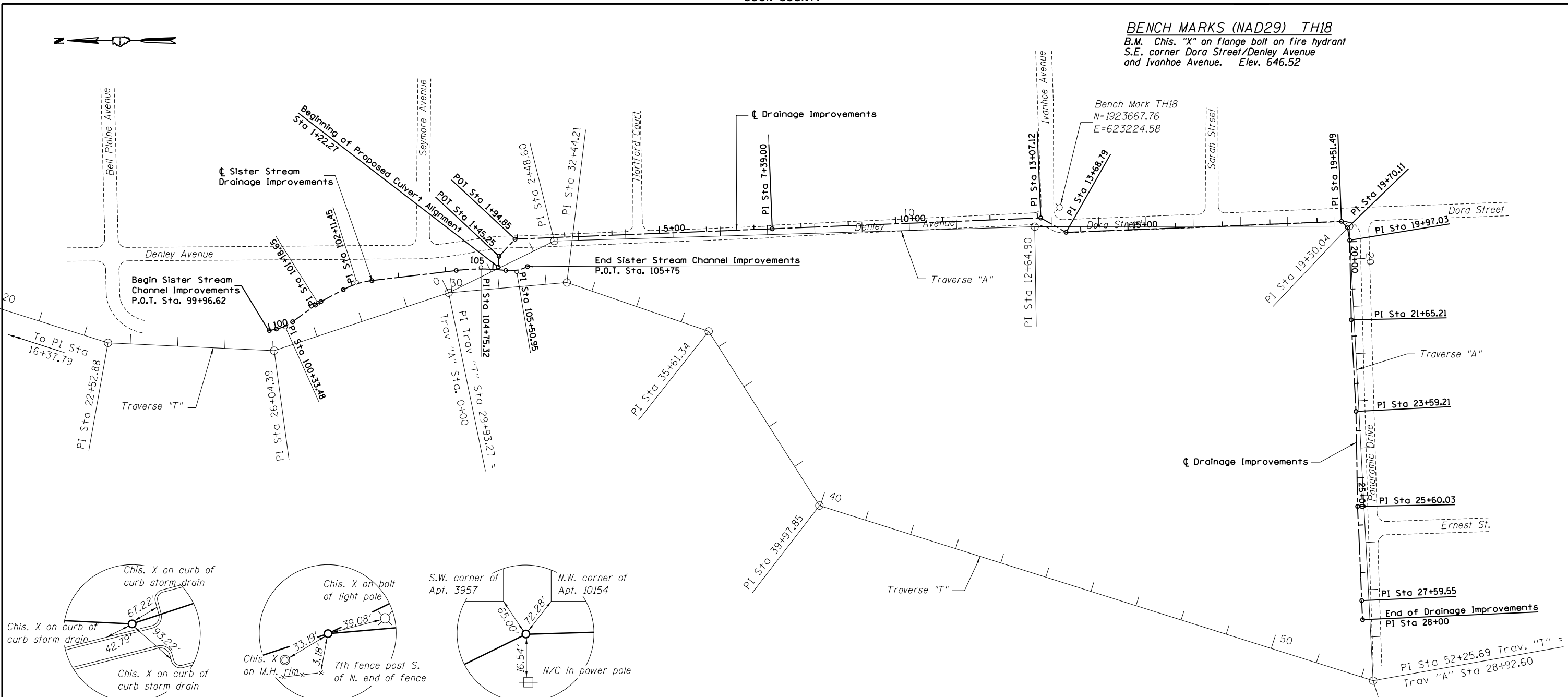
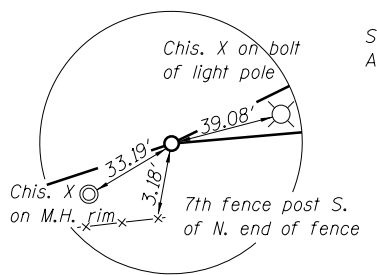


**BENCH MARKS (NAD29) TH18**

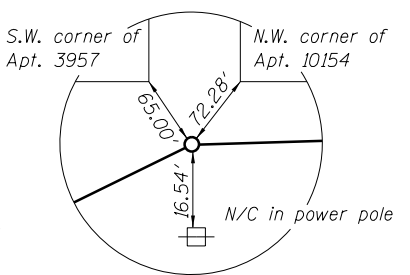
B.M. Chis. "X" on flange bolt on fire hydrant  
S.E. corner Dora Street/Denley Avenue  
and Ivanhoe Avenue. Elev. 646.52



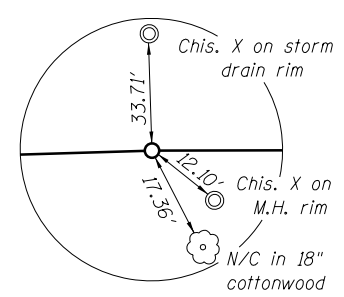
Traverse "T" Sta. 26+04.39  
Chis. X on curb



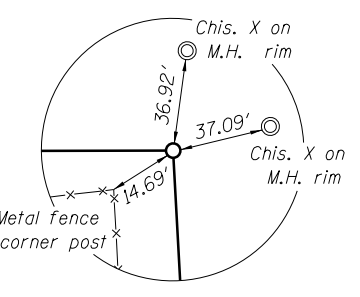
Traverse "A" Sta. 0+00.00 =  
Traverse "T" Sta. 29+93.27  
Rebar



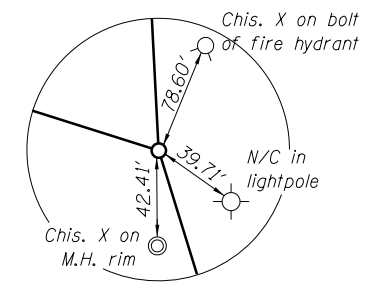
Traverse "A" Sta. 2+48.60  
Chis. X on M.H. rim



Traverse "A" Sta. 12+64.90  
Rebar



Traverse "A" Sta. 19+30.04  
Rebar



Traverse "A" Sta. 28+92.60 =  
Traverse "T" Sta. 52+25.69  
Chis. X on curb

**SURVEY TRAVERSE REFERENCE MARKS**

**SURVEY TRAVERSE "A" COORDINATES**

PI Sta. 0+00	N 1924959.46	E 623044.07
PI Sta 2+48.60	N 1924736.26	E 623153.55
PI Sta 12+64.90	N 1923720.41	E 623183.75
PI Sta 19+30.04	N 1923055.27	E 623185.00
PI Sta 28+92.60	N 1923004.89	E 622223.76

**SURVEY TRAVERSE "T" COORDINATES**

PI Sta 22+52.88	N 1925679.67	E 622938.21
PI Sta 26+04.39	N 1925328.56	E 622921.62
PI Sta 29+93.27	N 1924959.46	E 623044.07
PI Sta 32+44.21	N 1924709.45	E 623065.78
PI Sta 35+61.34	N 1924409.63	E 622962.49
PI Sta 39+97.85	N 1924175.56	E 622594.03
PI Sta 52+25.69	N 1923004.89	E 622223.76
PI Sta 56+39.04	N 1922882.61	E 621828.91

**CL DRAINAGE IMPROVEMENT COORDINATES**

POT STA. 99+96.62	N 1,925,340.81	E 622,963.71
PI STA. 100+33.48	N 1,925,304.78	E 622,971.49
PI STA. 101+18.65	N 1,925,235.60	E 623,022.12
PI STA. 102+11.45	N 1,925,153.78	E 623,065.96
PI STA. 104+75.32	N 1,924,891.04	E 623,097.47
PI STA. 105+50.95	N 1,924,815.45	E 623,088.42
POT STA. 105+75	N 1,924,792.68	E 623,099.54
POT STA. 1+22.27	N 1,924,854.69	E 623,098.34
PI STA. 1+45.25	N 1,924,852.77	E 623,121.24
PI STA. 1+94.85	N 1,924,818.94	E 623,157.51
PI STA. 7+39.00	N 1,924,275.23	E 623,179.36
PI Sta 13+07.12	N 1,923,707.57	E 623,202.33
PI Sta 13+68.79	N 1,923,653.96	E 623,171.84
PI Sta 19+51.49	N 1,923,071.73	E 623,195.02
PI Sta 19+70.11	N 1,923,058.79	E 623,181.62
PI Sta 19+97.03	N 1,923,054.41	E 623,155.07
PI Sta 21+65.21	N 1,923,050.93	E 622,986.92
PI Sta 23+59.21	N 1,923,041.04	E 622,793.17
PI Sta 25+60.03	N 1,923,037.62	E 622,592.38
PI Sta 27+59.55	N 1,923,028.79	E 622,393.05
POT Sta 28+00	N 1,923,027.00	E 622,352.65

O:\OwrProj\m\Projects\CrystalCreek II B\Plan Sheets\6 Survey Traverse and Centerline Coordinates.dgn  
 7/5/21 AM  
 7/6/2013  
 Designed By TMM checked by RLP  
 Drawn By RJM checked by JUF