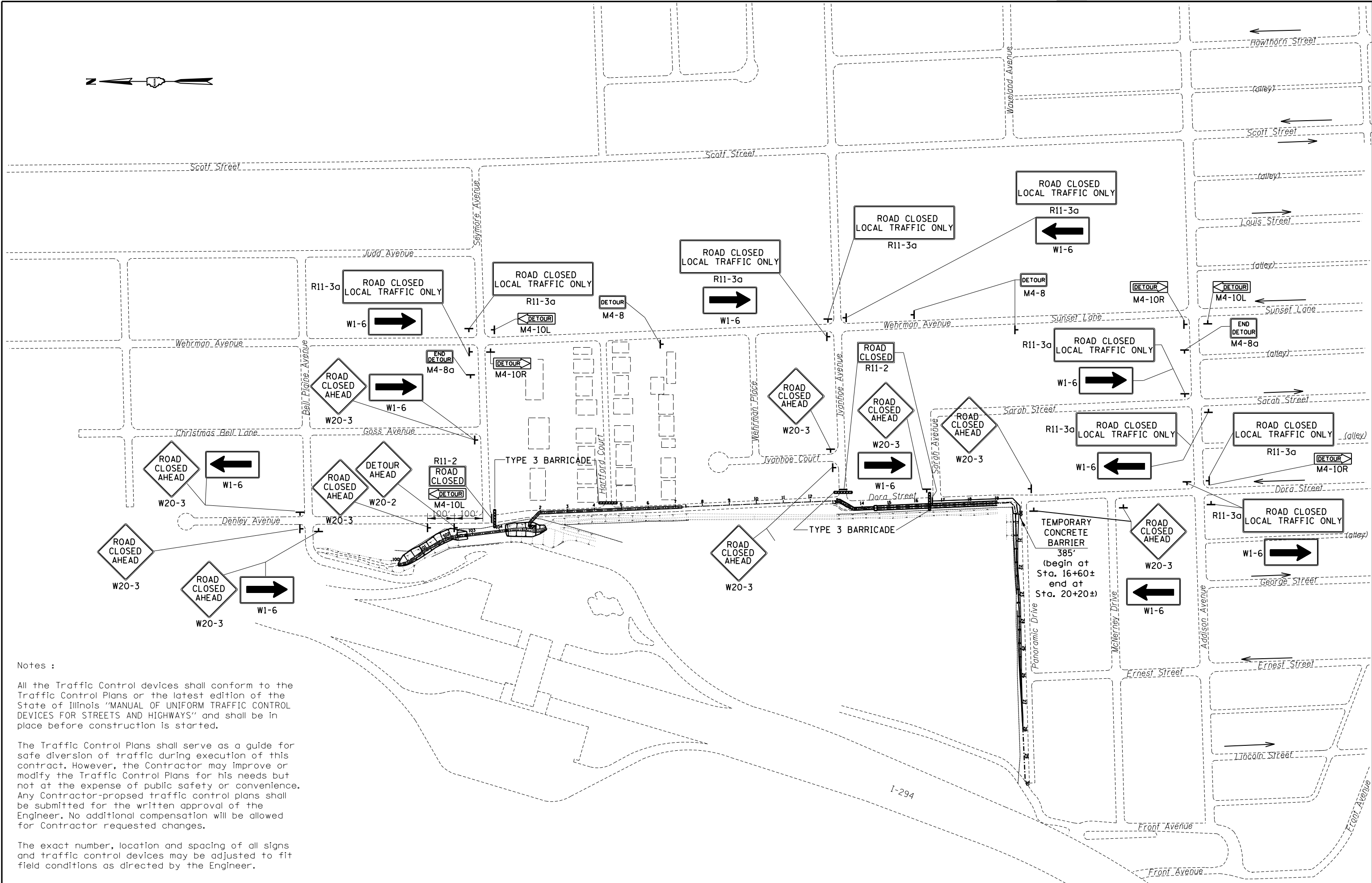




Designed By RJM checked by GMS  
Drawn By RJM checked by RLP  
O:\OwrProj\m\Projects\CrystalCreek II B\Plan Sheets\14 Traffic Control.dgn  
8:04:19 AM  
7/20/13



Notes :

All the Traffic Control devices shall conform to the Traffic Control Plans or the latest edition of the State of Illinois "MANUAL OF UNIFORM TRAFFIC CONTROL DEVICES FOR STREETS AND HIGHWAYS" and shall be in place before construction is started.

The Traffic Control Plans shall serve as a guide for safe diversion of traffic during execution of this contract. However, the Contractor may improve or modify the Traffic Control Plans for his needs but not at the expense of public safety or convenience. Any Contractor-proposed traffic control plans shall be submitted for the written approval of the Engineer. No additional compensation will be allowed for Contractor requested changes.

The exact number, location and spacing of all signs and traffic control devices may be adjusted to fit field conditions as directed by the Engineer.