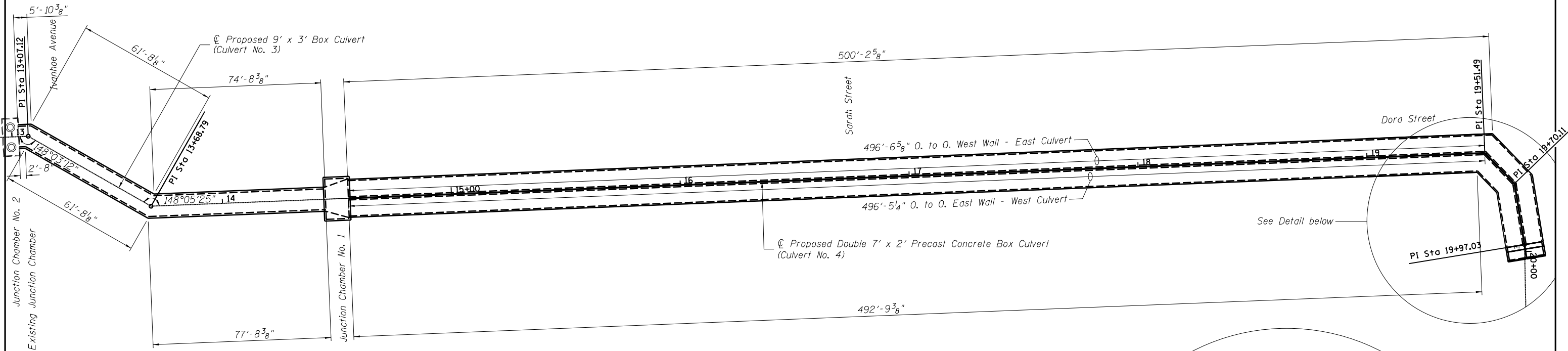
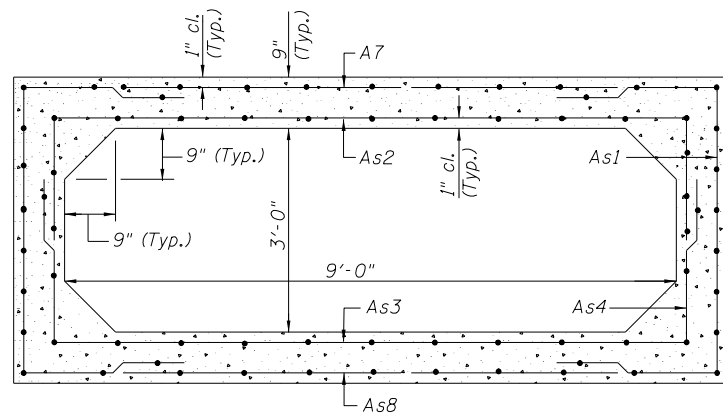


Notes

The Contractor shall field verify the locations of the existing junction chamber and twin 54" diameter RCCP's and make necessary approved adjustments to the box culvert layout prior to construction or ordering of materials as approved by the Engineer.



PLAN

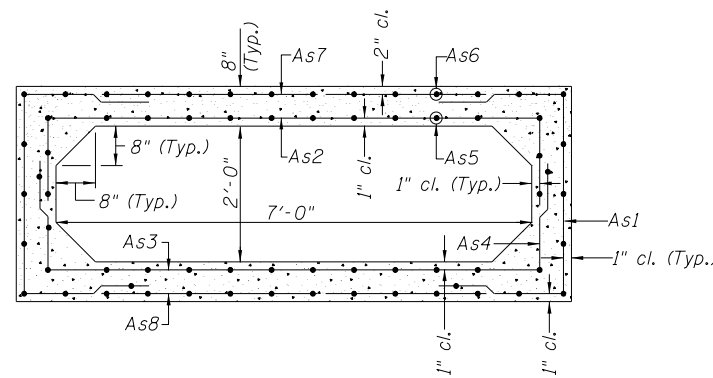


CROSS SECTION

CIRCUMFERENTIAL REINFORCEMENT AREA (Inch²/Ft.)

As1	As2	As3	As4	As5	As6	As7	As8
0.46	0.34	0.35	0.22	—	—	0.22	0.22

PROPOSED 9' X 3' PRECAST BOX CULVERT

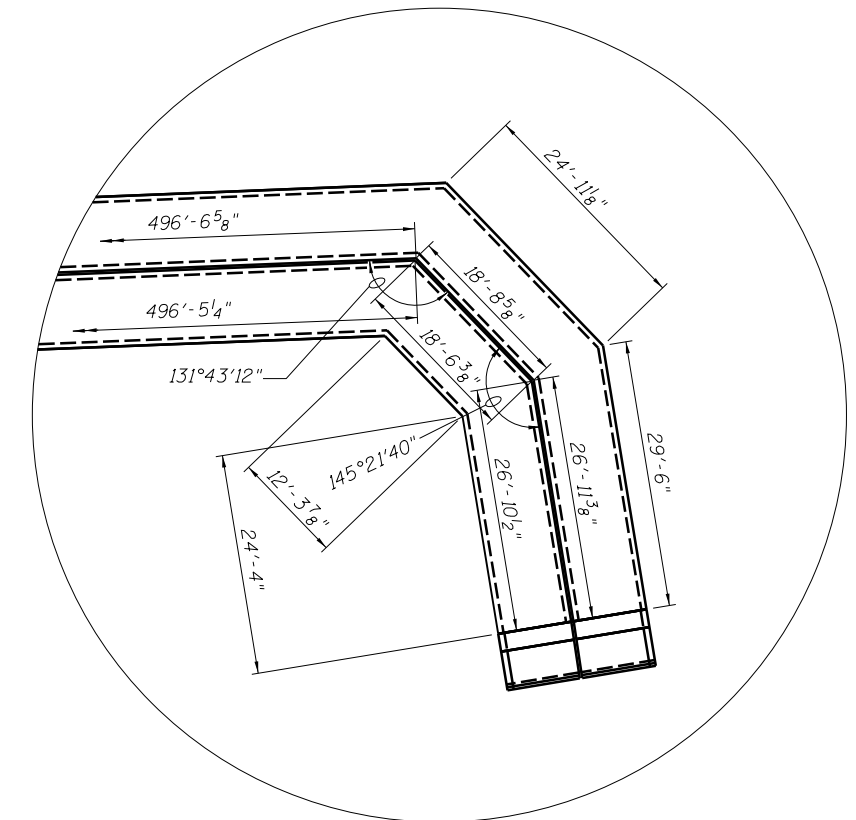


CROSS SECTION

CIRCUMFERENTIAL REINFORCEMENT AREA (Inch²/Ft.)

As1	As2	As3	As4	As5	As6	As7	As8
0.38	0.28	0.25	0.20	0.20	0.20	0.20	0.20

PROPOSED 7' X 2' PRECAST BOX CULVERT



DETAIL

Designed By JUF Checked By TMM
 Drawn By JUF Checked By TMM
 O:\OwrProj\proj\Projects\CrystalCreek IIB\Plan Sheets\17 Box Culvert Layout II.dgn
 7/20/13 8:06:06 AM