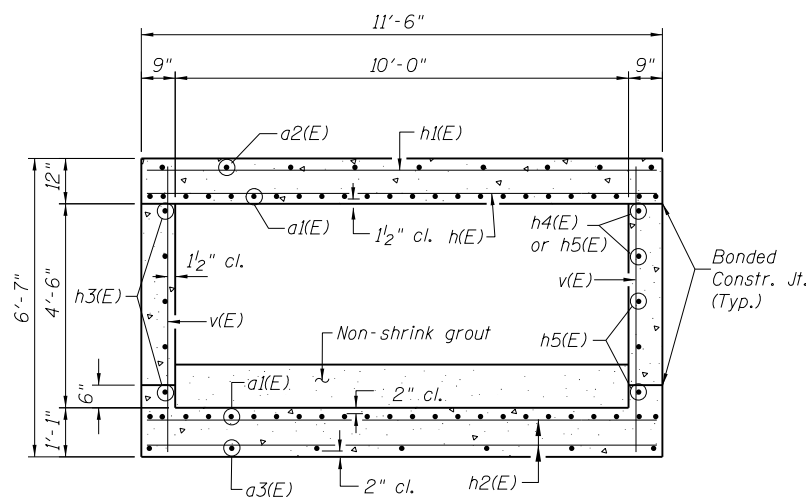
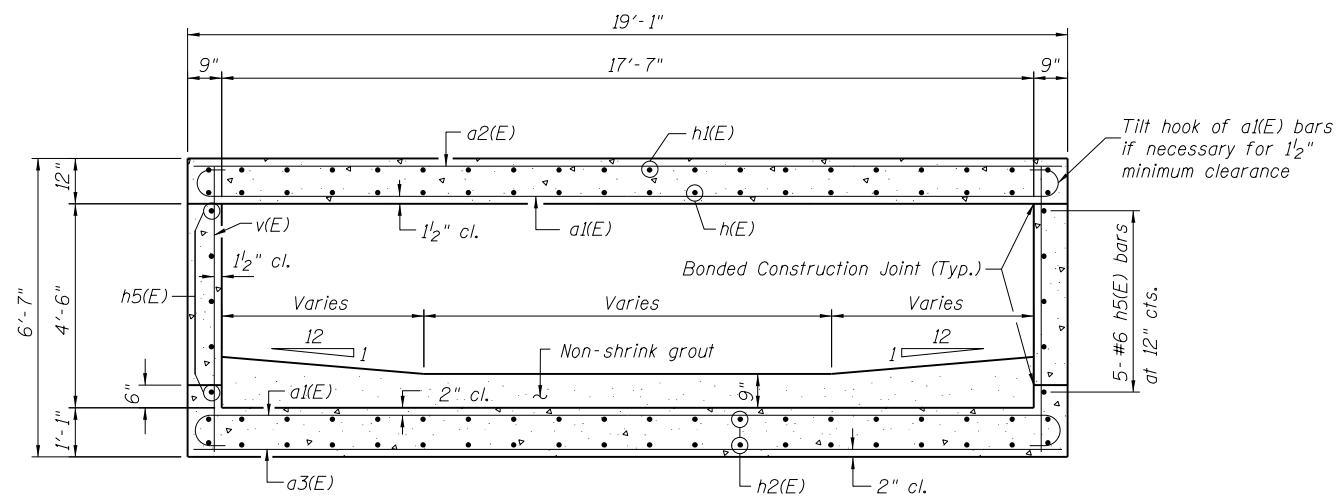


Notes:

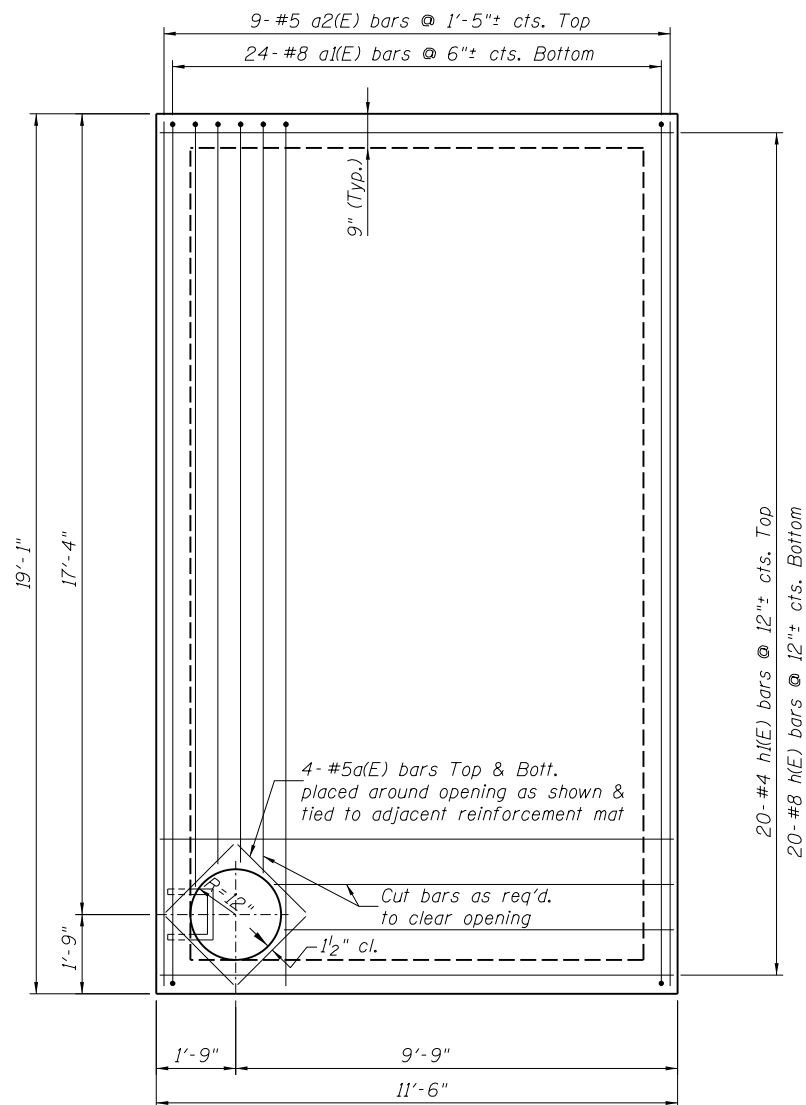
- All exposed edges of concrete shall have a 3/4" chamfer unless noted otherwise.
- Reinforcement bars designated (E) shall be epoxy coated.
- Contractor shall construct top slab or brace junction chamber walls prior to backfilling.
- Cost of cast iron steps included with Concrete Structures.
- Precast alternate is not allowed.
- Cost of non shrink grout included with Concrete Structures.



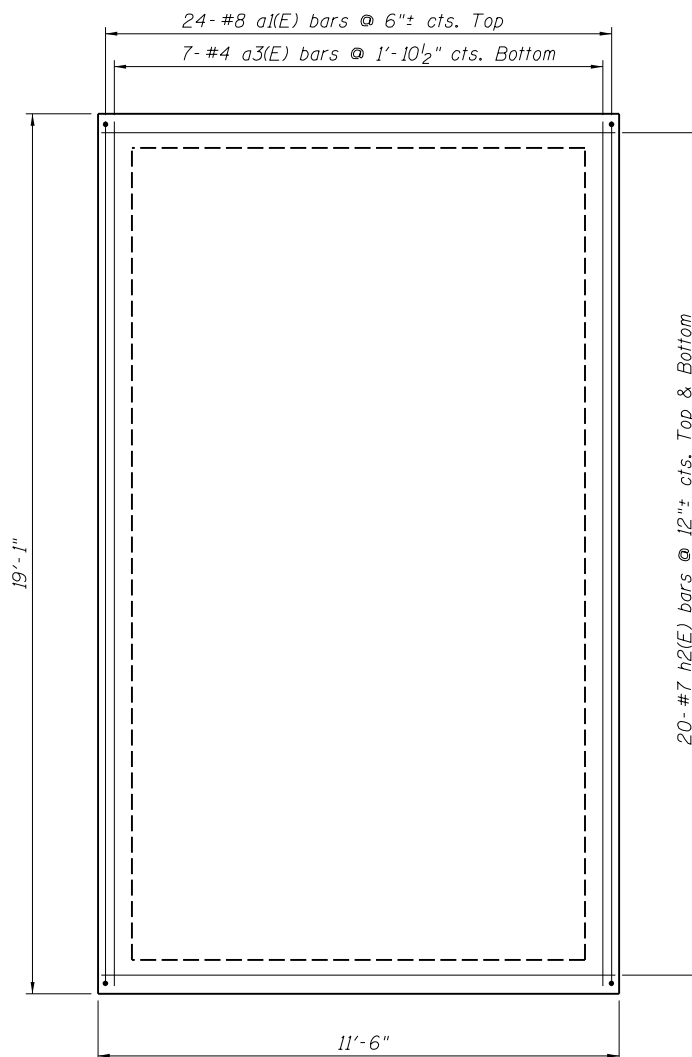
SECTION B-B



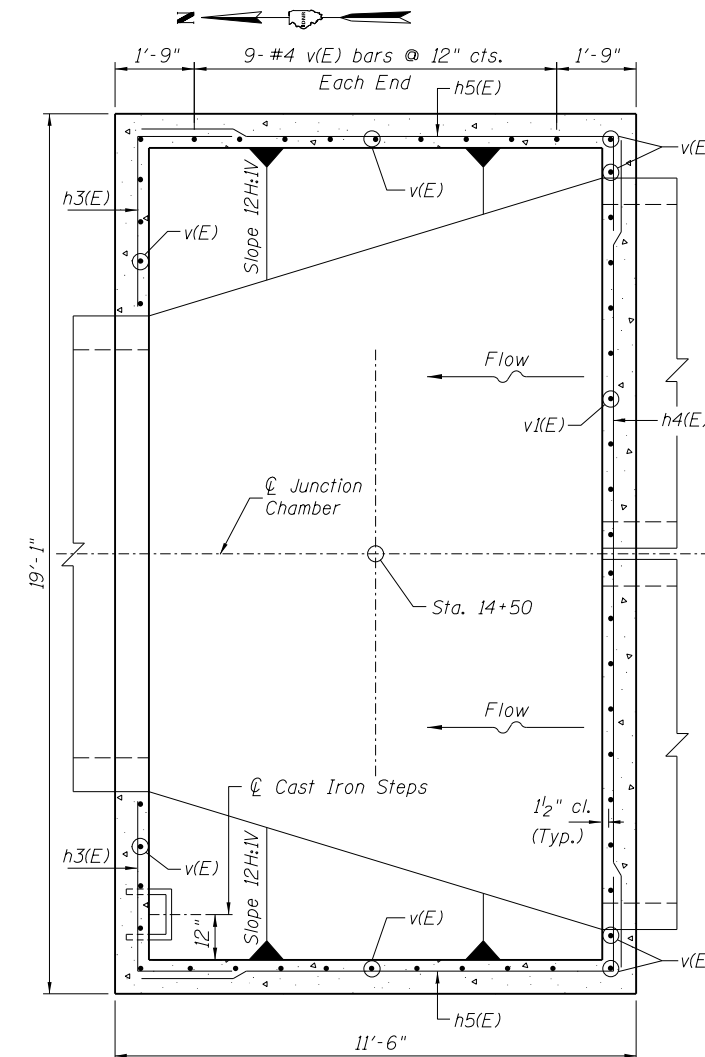
SECTION A-A



TOP SLAB

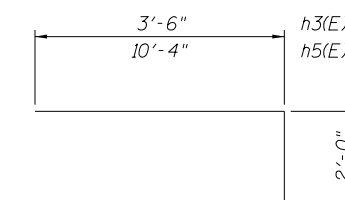


BOTTOM SLAB

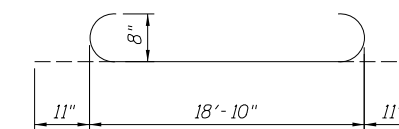


PLAN

(Showing reinforcement in walls)



BARS h3(E) & h5(E)



BAR a1(E)

BILL OF MATERIAL

Bar	No.	Size	Length	Shape
a(E)	8	#5	2'-3"	—
a1(E)	48	#8	20'-8"	—
a2(E)	9	#5	18'-10"	—
a3(E)	7	#4	18'-10"	—
h(E)	20	#8	11'-3"	—
h1(E)	20	#4	11'-3"	—
h2(E)	40	#7	11'-3"	—
h3(E)	10	#6	5'-6"	—
h4(E)	2	#6	18'-0"	—
h5(E)	10	#6	12'-4"	—
v(E)	32	#4	6'-3"	—
v1(E)	16	#4	1'-11"	—
Concrete Structures			Cu Yd	21.3
Reinforcement Bars, Epoxy Coated			Pound	5,080
Structure Excavation			Cu Yd	92

Designed By TMM Checked By JUF  
 Drawn By JUF Checked By TMM  
 7/6/2013 8:09:58 AM  
 O:\OwrProj\mpl\Projects\CrystalCreek IIB\Plan Sheets\9 Junction Chamber No 1 Details.dgn