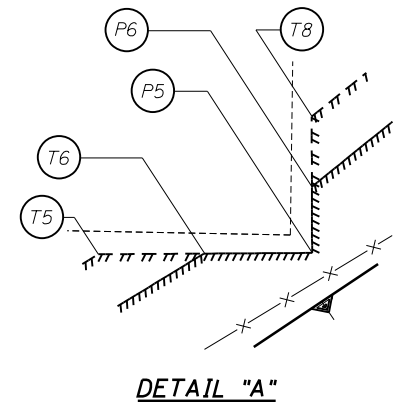


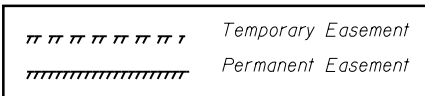
See Detail "A"



PERMANENT (P and PE) AND TEMPORARY (T and TE) EASEMENT COORDINATES

PE NUMBERS	NORTHING	EASTING	TE NUMBERS	NORTHING	EASTING
P1	1,925,321.27	622,013.61	T2	1,925,329.23	623,014.32
P2	1,925,291.58	623,032.83	T3	1,925,293.78	623,037.36
P3	1,925,277.28	623,037.75	T4	1,925,279.42	623,042.31
P5	1,925,231.56	623,059.65	T5	1,925,251.21	623,059.53
P6	1,925,231.56	623,065.77	T6	1,925,241.51	623,059.59
P7	1,925,205.72	623,086.56	T8	1,925,231.59	623,072.17
PE25	1,924,823.73	623,172.73	T9	1,925,208.29	623,090.93
P12	1,924,778.43	623,139.98	TE22	1,924,828.15	623,182.55
PE39	1,925,352.35	622,993.50	T16	1,924,773.44	623,140.19
PE40	1,925,340.45	622,938.33	TE53	1,925,357.97	622,995.82
PE41	1,925,298.62	622,955.12	TE54	1,925,345.16	622,936.45
PE42	1,925,215.51	623,014.69			
PE43	1,925,156.27	623,044.39			
PE44	1,925,079.40	623,058.25			
PE45	1,924,945.01	623,069.14			
PE46	1,924,776.37	623,064.91			

LEGEND



Designed By RJM Checked By GMS
 Drawn By RJM Checked By GMS
 O:\OwrProj\m\Projects\CrystalCreek II B\Plan Sheets\37 Temporary and Permanent Easements 1.dgn
 8:44:45 AM
 7/6/2013