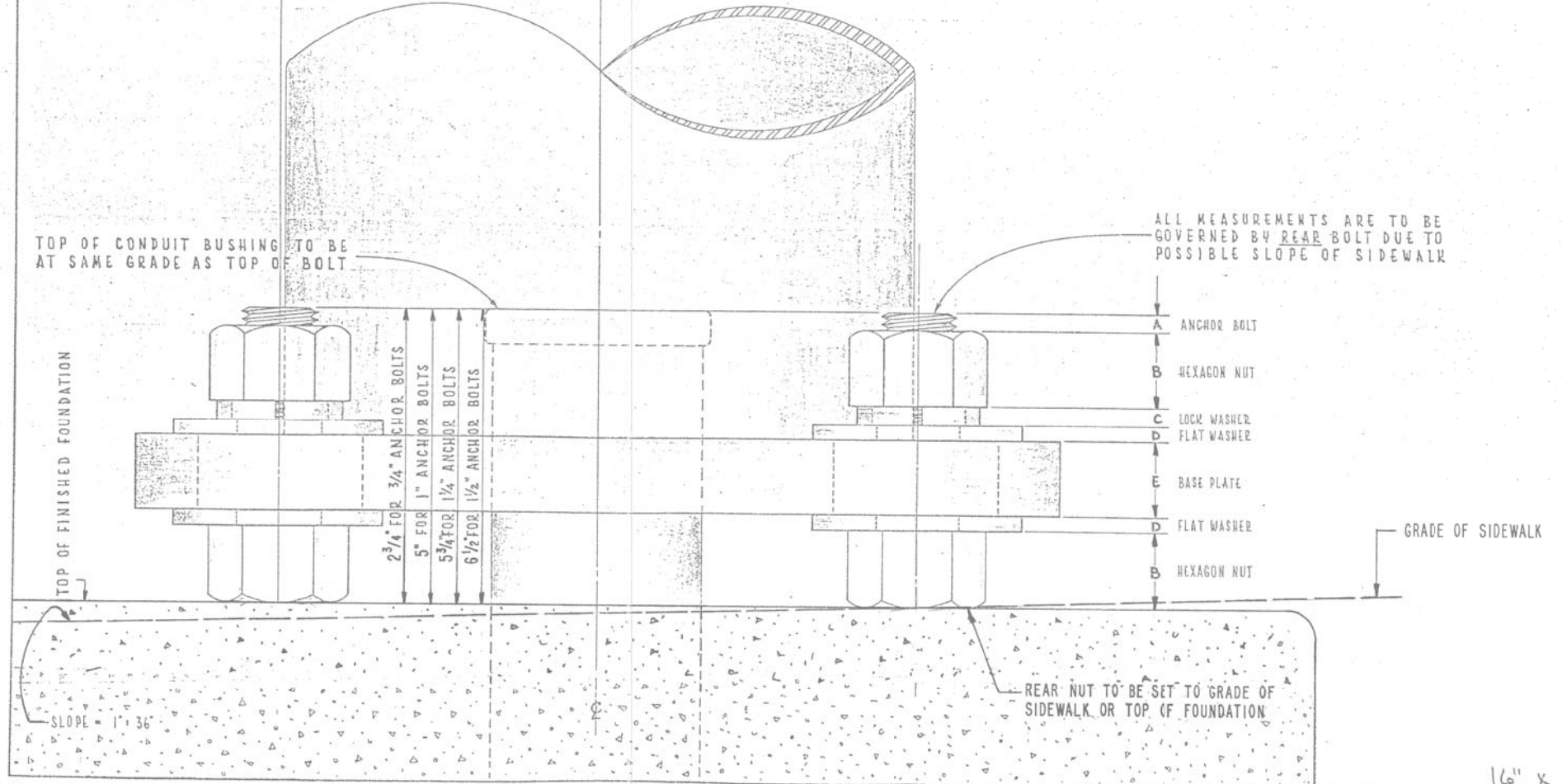


**INSTALLATION NOTES**

- STEP 1 COAT EXPOSED PORTION OF ANCHOR BOLTS WITH APPROVED ANTI RUSTING GREASE ("NO-DX" OR EQUAL).
- STEP 2 INSTALL LOWER LEVELLING NUTS & WASHERS. SET AT PROPER GRADE WITH HAND LEVEL. USE TABLE FOR APPROPRIATE DIMENSIONS.
- STEP 3 MOUNT POLE OR PEDESTAL, ATTACH TOP WASHERS & NUTS HAND TIGHT.
- STEP 4 PLUMB POLE OR PEDESTAL AFTER ALL MASTARMS, STREET LIGHTS, TRAFFIC SIGNALS & OTHER APPURTENANCES ARE ATTACHED TO POLE & TIGHTEN ALL NUTS.
- STEP 5 ATTACH NUT COVERS WHERE REQUIRED.
- STEP 6 DO NOT GROUT IN SPACE BETWEEN BOTTOM OF POLE & TOP OF FOUNDATION. TOP OF FOUNDATION OR SURFACE OF SIDEWALK MUST BE LEFT CLEAN AND SMOOTH.
- STEP 7 POLE OR PEDESTAL IS TO BE PERFECTLY PLUMB, NO "RAKE" IS TO BE LEFT.

IF NECESSARY:  
 ANCHOR BOLT TO BE TRIMMED WITH SAW. DO NOT BURN, AS THIS DRASTICALLY REDUCES THE TENSILE STRENGTH OF ANCHOR BOLT.  
 COAT ANCHOR BOLT WITH RUST-OLEUM HARD HAT ZINC RICH COMPOUND.

		T A B L E						
		ANCHOR BOLT SIZE						
U	N I T	1"	1 1/4"	1 1/2"	3/4"		ALUM. PED.	
		P O L E G A U G E S						
		7 GA.	3 GA.	7 GA.	3 GA.	7 GA.	3 GA.	
A		7/16"	7/16"	1/8"	1 5/16"	1 1/8"	7/8"	3/4"
B		1"	1"	1/4"	1 1/4"	1 1/2"	1 1/2"	3/4"
C		1/4"	1/4"	5/16"	5/16"	3/8"	3/8"	3/16"
D		5/32"	5/32"	1/4"	1/4"	1/4"	1/4"	5/32"
E		1"	1"	1/4"	1 1/2"	1 1/2"	1 3/4"	5/8"



**CONSTRUCTION METHOD FOR "DOUBLE-NUT" INSTALLATION OF POLES AND PEDESTALS**

CITY OF CHICAGO  
 DEPT. OF STREETS AND SANITATION  
 BUREAU OF ELECTRICITY  
 DIVISION OF ELECTRICAL ENGINEERING

DRAWN BY: EUGENE GERULIS  
 SUPERVISING ENGINEER: [Signature]  
 CHIEF DRAFTSMAN: [Signature]  
 ELEC. DESIGN ENGR.  
 ENGINEER: [Signature]  
 I. E. S.  
 I. N. D. N. O.

ENGINEER OF ELECTRICITY: [Signature]  
 SEN. SUPT. OF ELECTRICITY

SECURITY COMMISSIONER: [Signature]  
 RZE: 22 | 30 | SCALE: 1" = 1" | DATE: 6-7-85

**837**