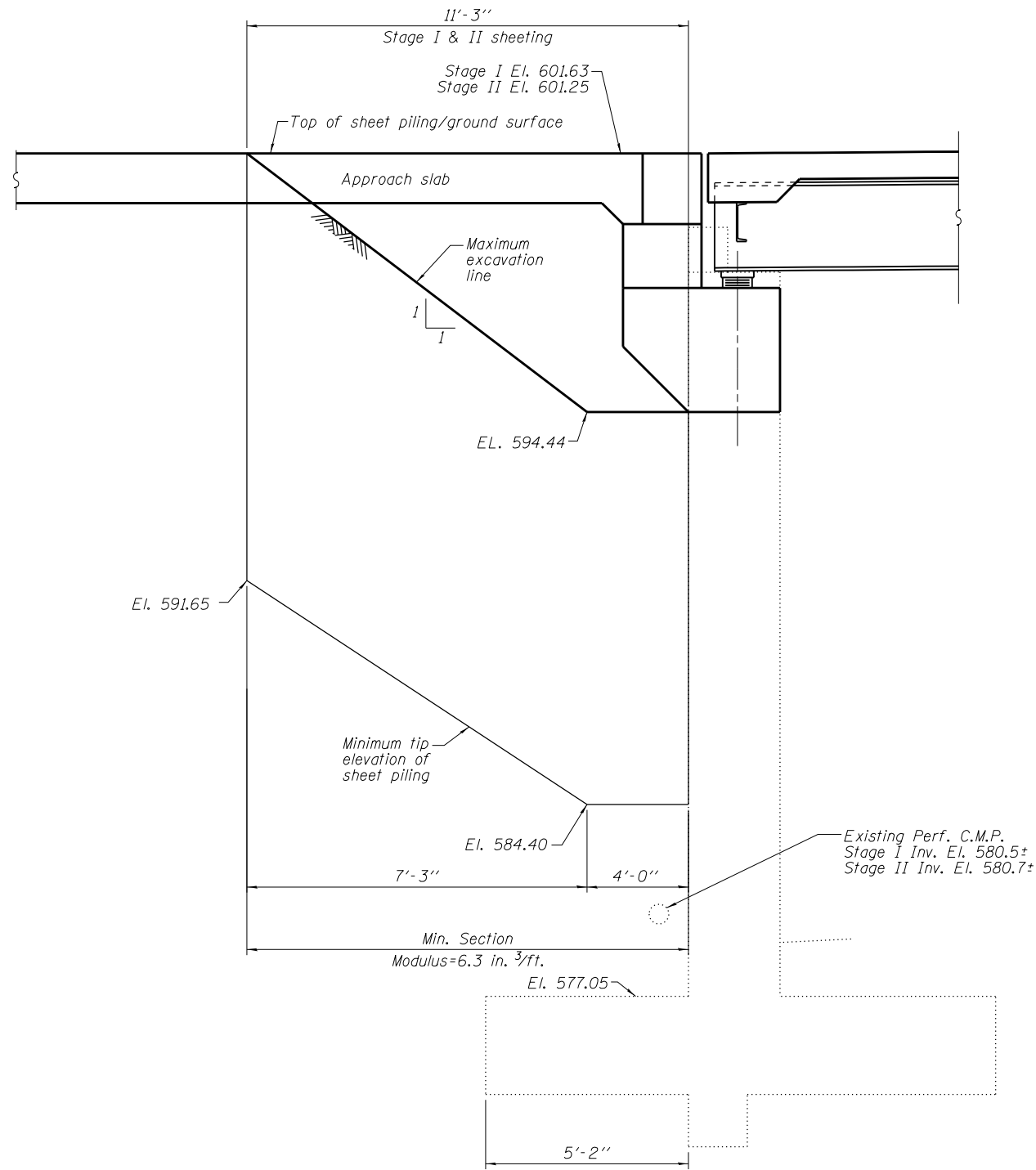
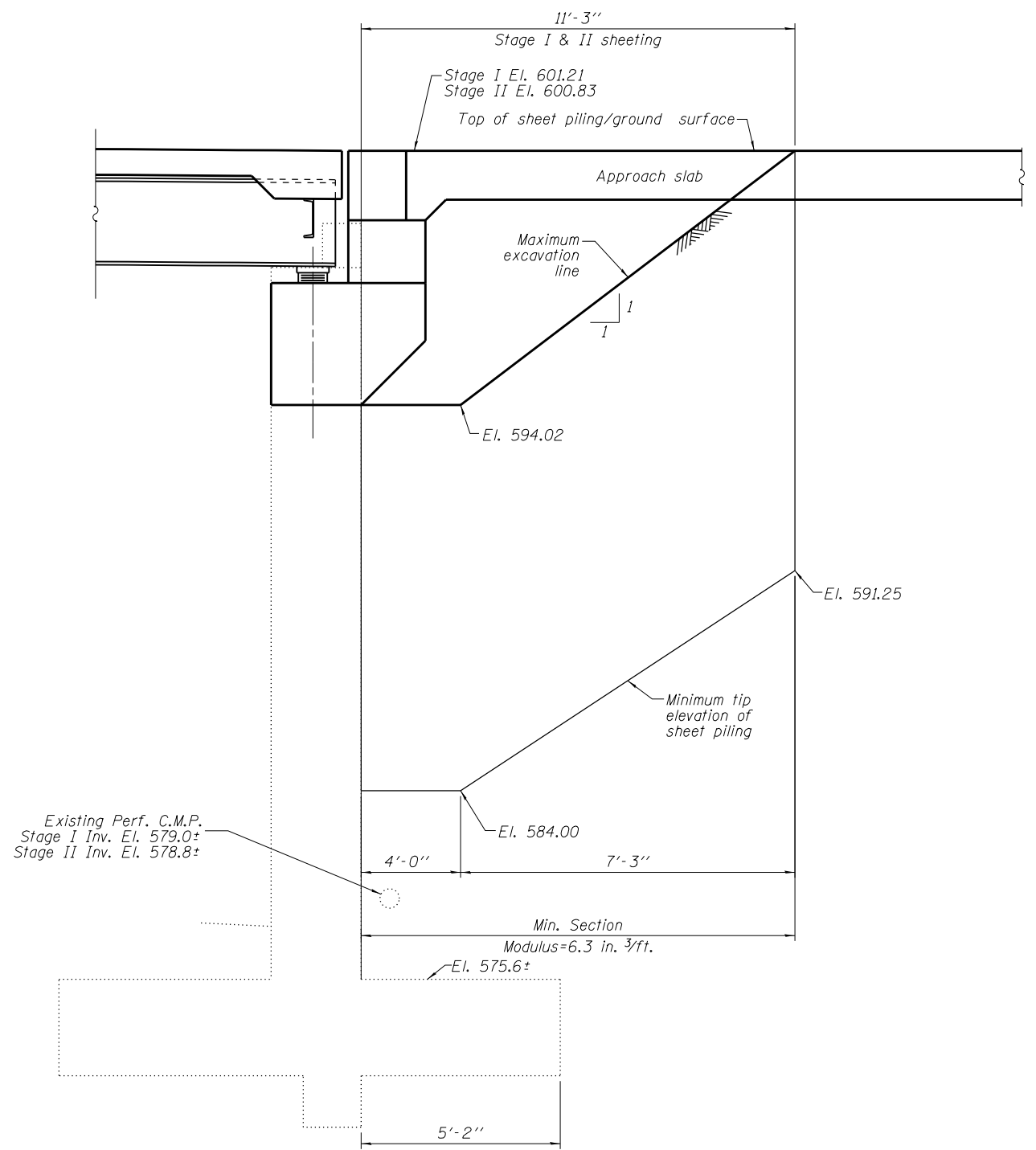


H:\projects\2013\02\23\CAD\Structural\dwg\06-1149-Final\06\015-s06-temp-sht-piling.dgn
 5/20/2013 10:23:59 AM



**ELEVATION VIEW OF TEMPORARY SHEET PILING
LOOKING NORTH AT WEST ABUTMENT**



**ELEVATION VIEW OF TEMPORARY SHEET PILING
LOOKING NORTH AT EAST ABUTMENT**

BILL OF MATERIAL

ITEM	UNIT	QUANTITY
Temporary Sheet Piling	Sq. Ft.	662

NOTES

- If the Contractor chooses to alter the temporary cantilevered sheet piling design requirements shown on the plans, a design submittal including plan details and calculations will be required for review and acceptance by the Engineer.
- The temporary sheet piling shall be installed prior to excavation in Stage I and Stage II. Remove temporary sheet piling after backfilling in Stage II and Stage III.

GRÄEF
 8501 W. Higgins Road, Suite 280
 Chicago, Illinois 60631; (773) 399-0112

USER NAME =	DESIGNED - J.Z.	REVISED -
CHECKED - J.A.Z.	REVISED -	
PLOT SCALE =	DRAWN - E.E.J.	REVISED -
PLOT DATE =	DATE - 5/17/2013	REVISED -

**STATE OF ILLINOIS
DEPARTMENT OF TRANSPORTATION**

**TEMPORARY SHEET PILING
STRUCTURE NO. 016-1149**

SHEET NO. 56 OF 50 SHEETS

F.A.I. RTE.	SECTION	COUNTY	TOTAL SHEETS	SHEET NO.
94	1920-B	COOK	137	65
CONTRACT NO. 60J15				
ILLINOIS FED. AID PROJECT				