
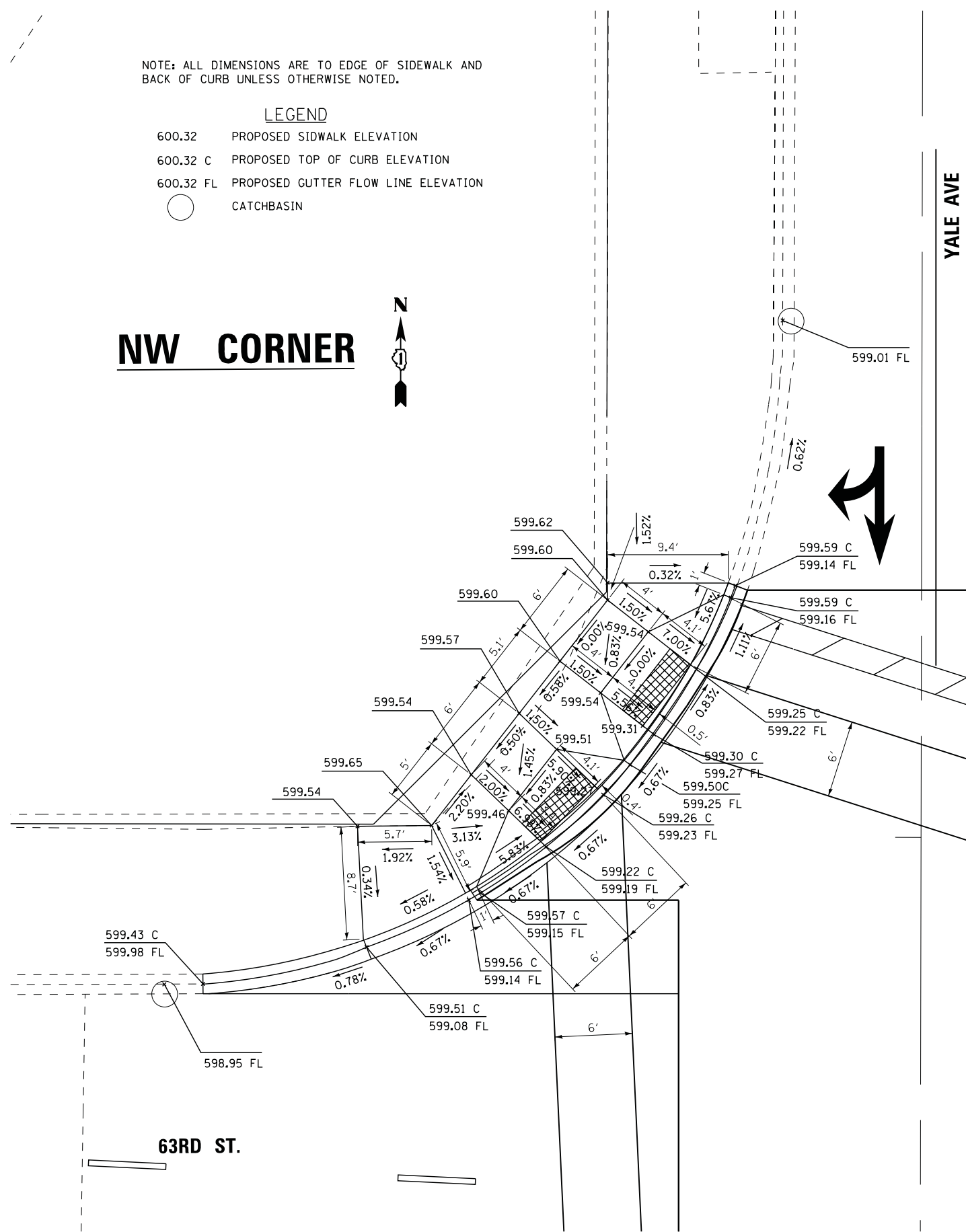


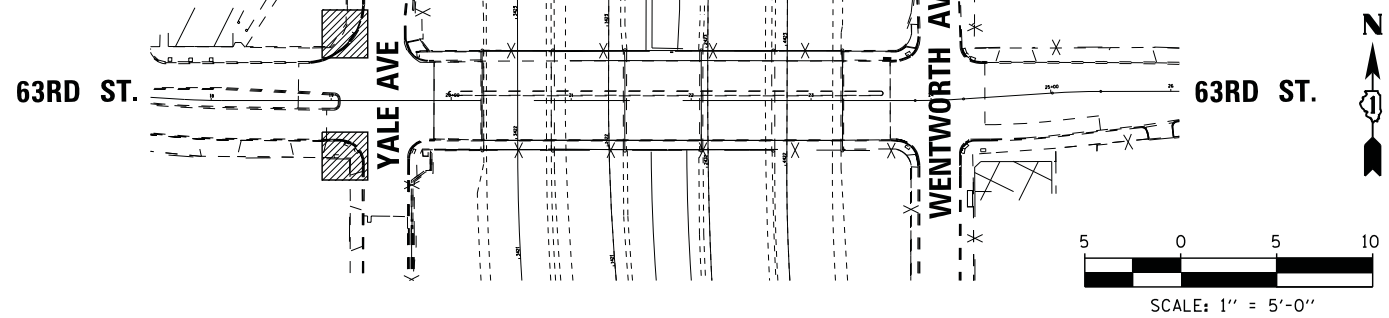
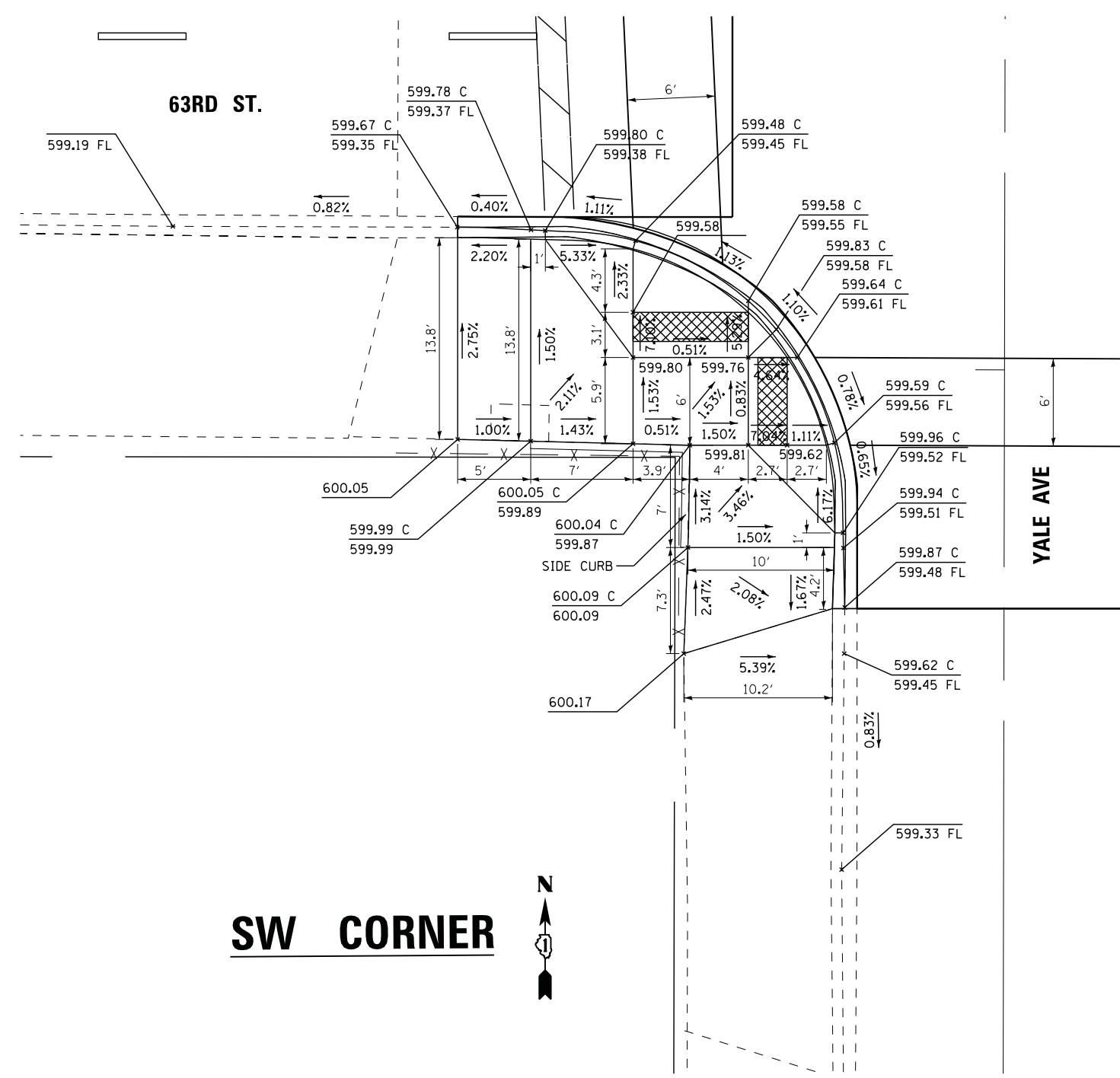
NOTE: ALL DIMENSIONS ARE TO EDGE OF SIDEWALK AND BACK OF CURB UNLESS OTHERWISE NOTED.

- LEGEND**
- 600.32 PROPOSED SIDEWALK ELEVATION
  - 600.32 C PROPOSED TOP OF CURB ELEVATION
  - 600.32 FL PROPOSED GUTTER FLOW LINE ELEVATION
  -  CATCHBASIN

**NW CORNER**



**SW CORNER**



FILE NAME = K:\Projects\11047\Design\CAD\Sheet Files\3doYale1.dgn	USER NAME = *USER*	DESIGNED - KMM	REVISED -	<b>STATE OF ILLINOIS DEPARTMENT OF TRANSPORTATION</b>	<b>CURB RAMP DETAILS 63RD ST. AT YALE AVE</b>			F.A.I. RTE.	SECTION	COUNTY	TOTAL SHEETS	SHEET NO.	
	PLOT SCALE = *SCALE*	DRAWN - LV	REVISED -		94	1920-B	COOK	137	120				
	PLOT DATE = 5/15/2013	CHECKED - JDH	REVISED -		SCALE: 1"=5'			SHEET NO.	OF SHEETS	STA.	TO STA.	ILLINOIS FED. AID PROJECT	CONTRACT NO. 60J15
		DATE - 02-22-2012	REVISED -										