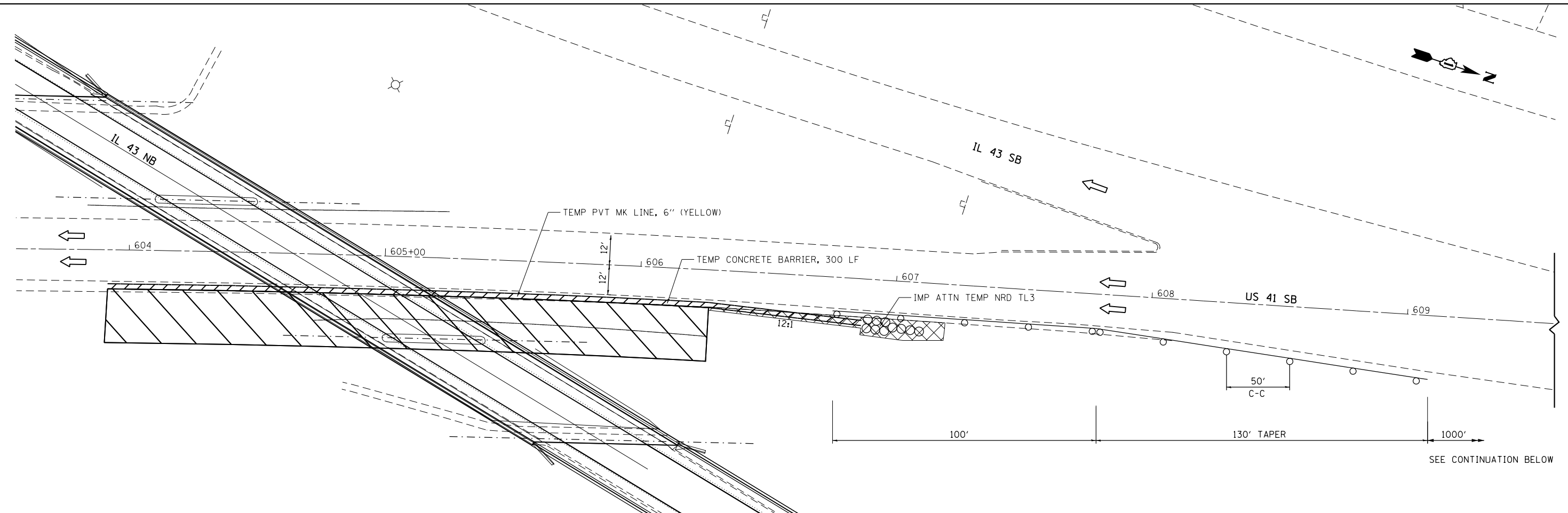
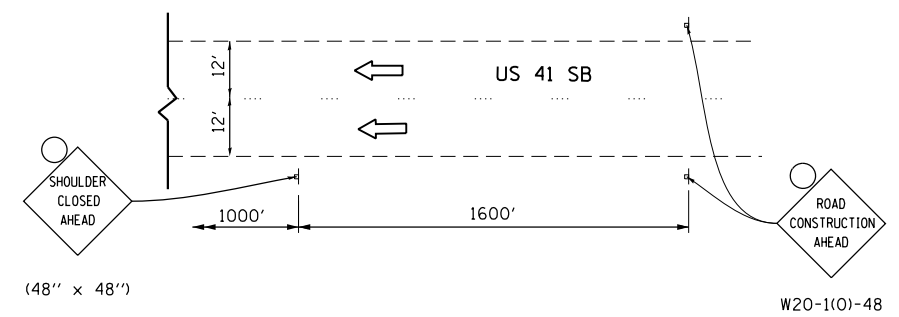


FILE NAME = I:\5710\6710.24 - IL 43 Over US 41\CADD\CADD\_Sheets\160R61-INT-MOT1.dgn



SEE CONTINUATION BELOW



- NOTES:
- FOR SHOULDER CLOSURES SEE DISTRICT 1 DETAIL TC-17 FOR ADDITIONAL SIGNS AND SIGNING DETAILS.
  - BARRIER WALL MARKERS ON RIGHT SHALL BE CRYSTAL AND MARKERS ON THE LEFT SHALL BE AMBER.

- LEGEND:
- WORK ZONE
  - DIRECTION OF TRAFFIC
  - TEMPORARY CONCRETE BARRIER WALL
  - DRUM WITH MONO-DIRECTIONAL STEADY BURNING LIGHT
  - TEMPORARY IMPACT ATTENUATOR
  - TEMPORARY PAVEMENT

**COLLINS ENGINEERS**  
 123 N. Booker Dr.  
 Suite 300  
 Chicago, IL 60606  
 Phone: (312) 704-3500  
 Fax: (312) 704-9500  
 www.collinsengr.com  
 ILLINOIS PROFESSIONAL DESIGN FIRM LICENSE NO. 084-088993

USER NAME = rge11	DESIGNED -	REVISED -
DRAWN -	REVISED -	
PLOT SCALE = 40.0000' / in.	CHECKED -	REVISED -
PLOT DATE = 5/10/2013	DATE -	REVISED -

**STATE OF ILLINOIS  
 DEPARTMENT OF TRANSPORTATION**

**MAINTENANCE OF TRAFFIC  
 STAGE 1- US 41 NORTHBOUND**

SCALE: SHEET OF SHEETS STA. TO STA.

F.A. RTE.	SECTION	COUNTY	TOTAL SHEETS	SHEET NO.
2706	125 HB-BR	LAKE	51	15
CONTRACT NO. 60R61				
ILLINOIS FED. AID PROJECT				