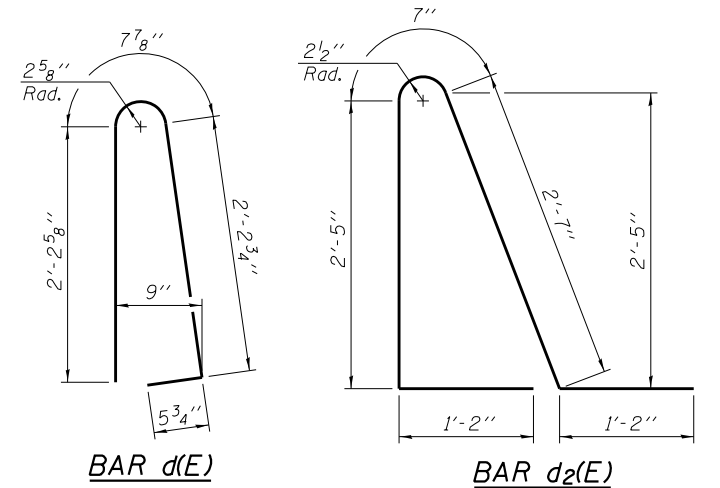
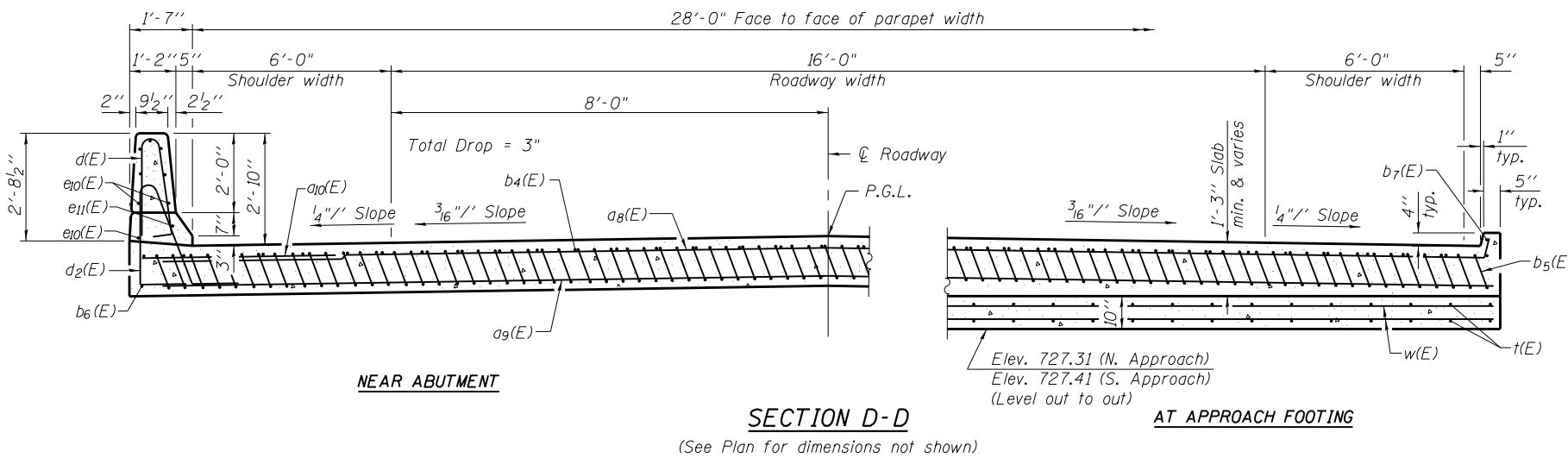
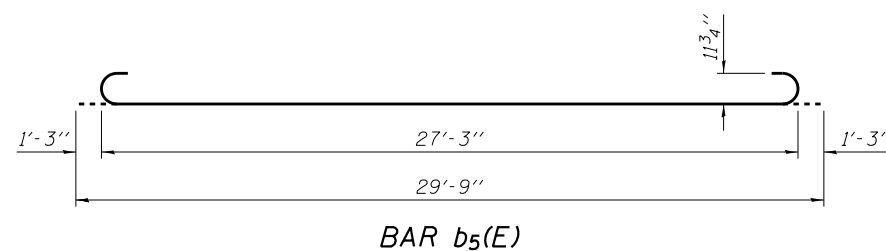
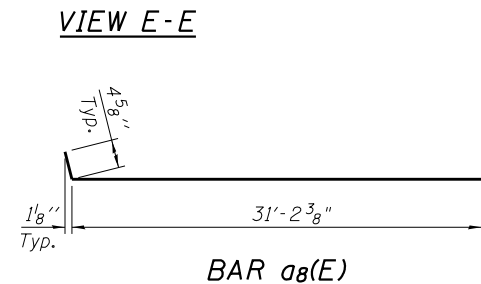
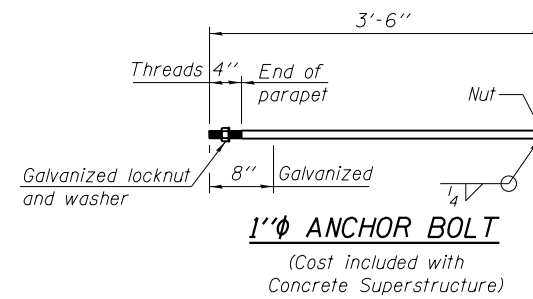
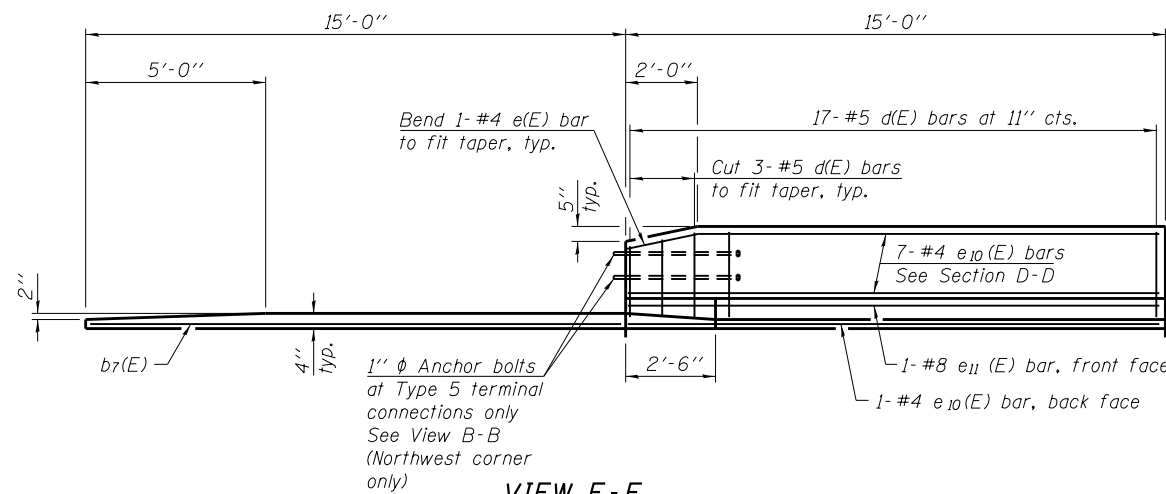


Notes:
 See sheet S12 of S24 for Detail A and View B-B.
 Approach slab and parapet concrete shall be paid for as Concrete Superstructure.
 Approach footing concrete shall be paid for as Concrete Structures.
 Reinforcement shall be paid for as Reinforcement Bars, Epoxy Coated.
 The approach footing maximum applied service bearing pressure (Qmax) = 2.0 ksf.
 For bar splicer details, see sheet S20 and S24 of S24.
 Cost of excavation for approach footing included with Concrete Structures.
 For Granular Backfill for Structures and drainage treatment details, see sheet S20 of S24.
 For additional parapet details, see sheet S10 of S24.



* Tilt #9 b5(E) bars as required to maintain clearance.
 *** Cost included with Concrete Superstructure.



**TWO APPROACHES
 BILL OF MATERIAL**

Bar	No.	Size	Length	Shape
a8(E)	100	#4	31'-7"	U
a9(E)	184	#5	31'-6"	—
a10(E)	48	#6	6'-6"	—
b4(E)	48	#4	29'-8"	—
b5(E)	142	#9	29'-9"	U
b6(E)	4	#4	14'-8"	—
b7(E)	4	#4	14'-4"	—
d(E)	68	#5	5'-7"	U
d2(E)	68	#5	7'-11"	U
e10(E)	32	#4	14'-8"	—
e11(E)	4	#8	14'-8"	—
t(E)	120	#4	19'-8"	—
w(E)	160	#5	31'-6"	—
Concrete Superstructure		Cu. Yd.	95.8	
Concrete Structures		Cu. Yd.	18.6	
Bridge Deck Grooving		Sq. Yd.	174	
Protective Coat		Sq. Yd.	288	
Reinforcement Bars, Epoxy Coated		Pound	32,300	

BA-L 10-9-12

(Sheet 2 of 2)

COLLINS ENGINEERS
 123 North Wacker Drive
 Suite 300
 Chicago, IL 60606
 (312) 704-9300
 www.collinsengr.com
 ILLINOIS PROFESSIONAL DESIGN FIRM LICENSE NO. 184-009953

USER NAME =	DESIGNED - AMS	REVISED -
PLOT SCALE =	CHECKED - JMS	REVISED -
PLOT DATE =	DRAWN - DR	REVISED -
	CHECKED - AMS	REVISED -

**STATE OF ILLINOIS
 DEPARTMENT OF TRANSPORTATION**

**BRIDGE APPROACH SLAB DETAILS
 STRUCTURE NO. 049-0087**

SHEET NO. S13 OF S24 SHEETS

F.A.U. RTE.	SECTION	COUNTY	TOTAL SHEETS	SHEET NO.
2706	125HB-BR	LAKE	51	30
CONTRACT NO. 60R61				
ILLINOIS FED. AID PROJECT				