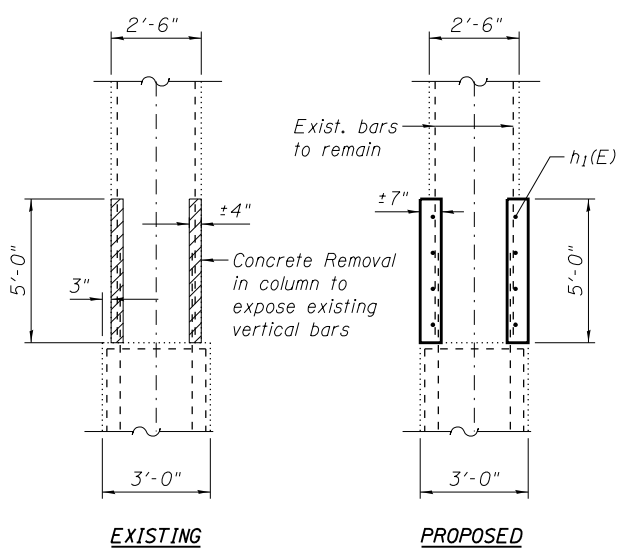
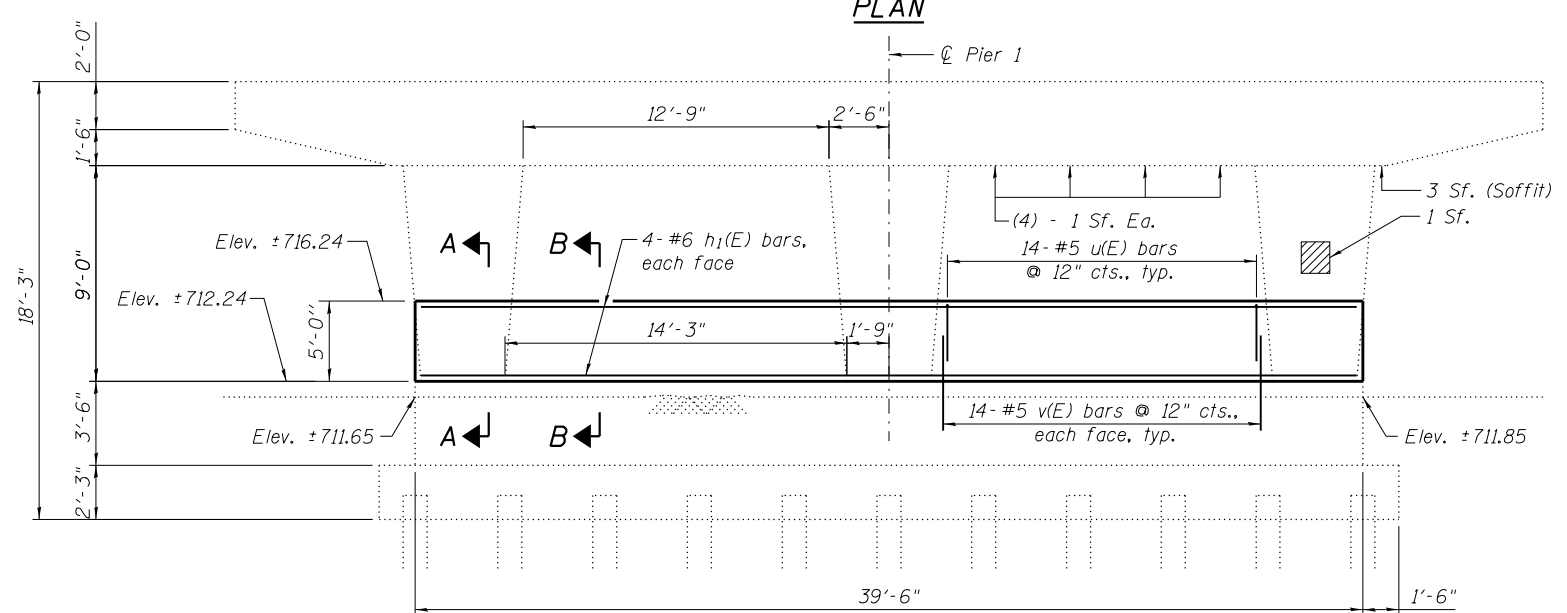


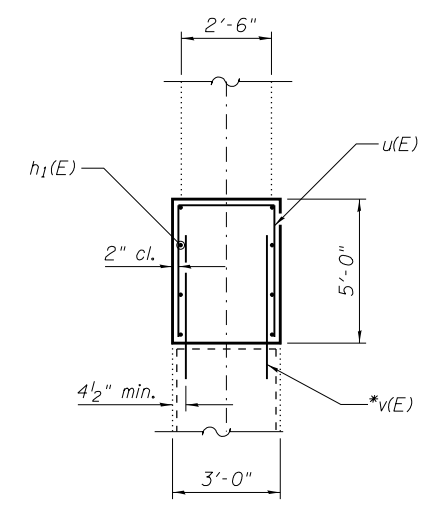
PLAN



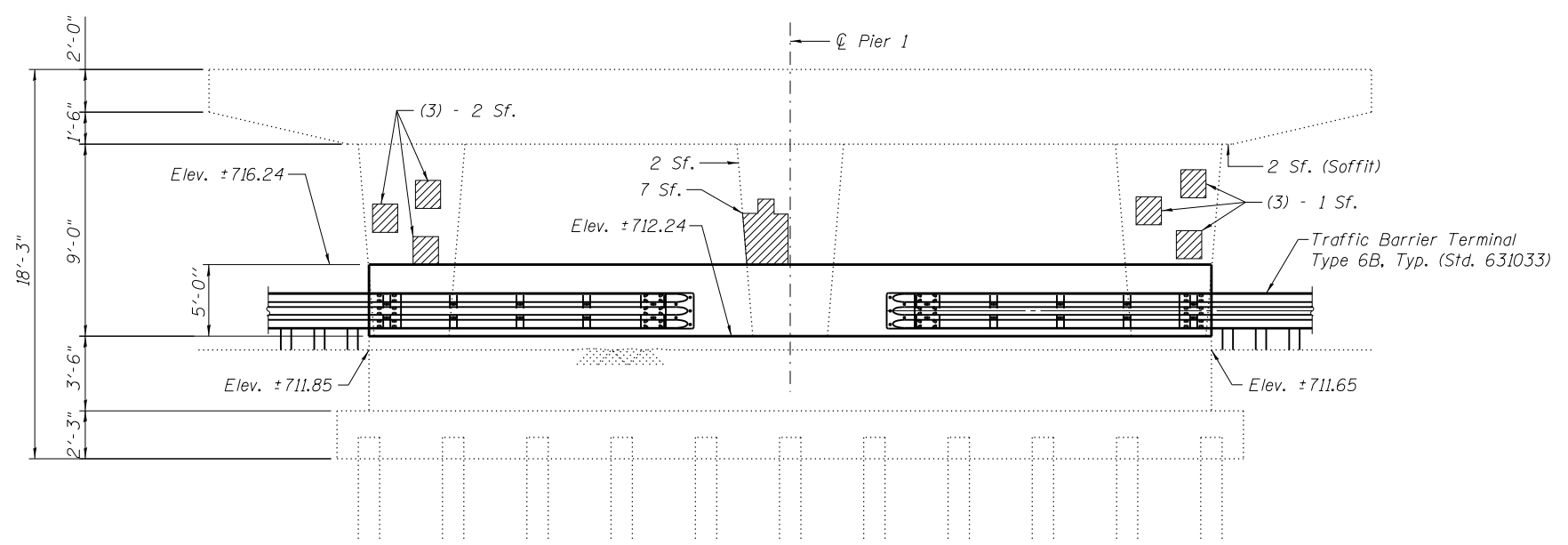
SECTION A-A



PIER 1 NORTH FACE
(Showing Rebar)



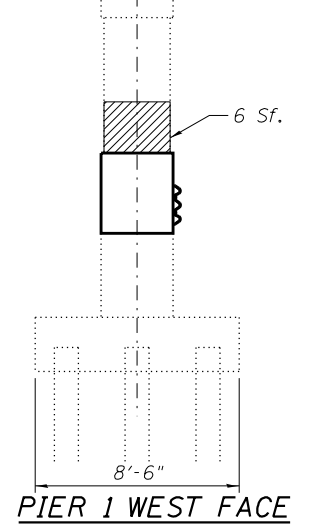
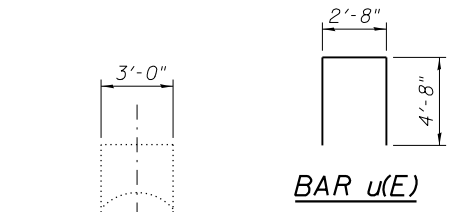
SECTION B-B



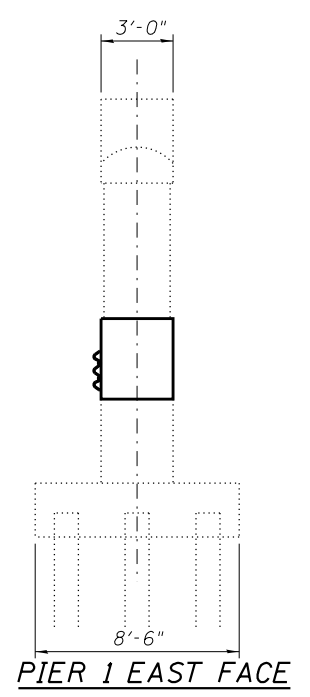
PIER 1 SOUTH FACE

BILL OF MATERIAL

SYMBOL	Bar	No.	Size	Length	Shape
	h ₁ (E)	8	#6	39'-2"	—
	u(E)	28	#5	12'-0"	□
	v(E)	56	#5	4'-0"	—
	Concrete Removal			Cu. Yd.	3.0
	Concrete Structures			Cu. Yd.	18.0
	Reinforcement Bars, Epoxy Coated			Pound	1,060
	Structural Repair of Concrete (Depth equal to or less than 5")			Sq. Ft.	34



PIER 1 WEST FACE



PIER 1 EAST FACE

* Drill and grout bars 9" into existing pier wall according to Article 584 of the Standard Specifications. Cost included with Reinforcement Bars, Epoxy Coated.