

STATE OF ILLINOIS  
DEPARTMENT OF TRANSPORTATION  
DIVISION OF HIGHWAYS

**PROPOSED  
HIGHWAY PLANS**

FAU 2857 (ASHLAND AVE)  
SECTION 146-T  
AT LITTLE CALUMENT RIVER  
STORM SEWER (NEW)

COOK COUNTY  
C-91-223-12

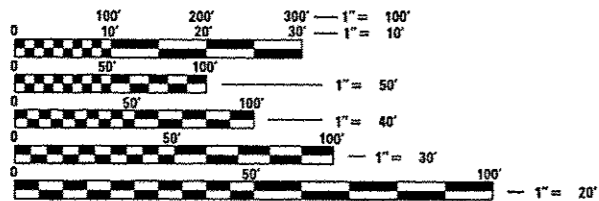
F.A.U. RTE. 2857	SECTION 146-T	COUNTY COOK	TOTAL SHEETS 16	SHEET NO. 1
ILLINOIS			CONTRACT NO. 60R82	

FOR INDEX OF SHEETS, SEE SHEET NO. 2

TRAFFIC DATA

EXISTING ADT = 15,600 (2011)  
SPEED LIMIT = 40 MPH

THE IMPROVEMENT IS LOCATED  
WITHIN THE VILLAGES OF DIXMOOR  
AND RIVERDALE

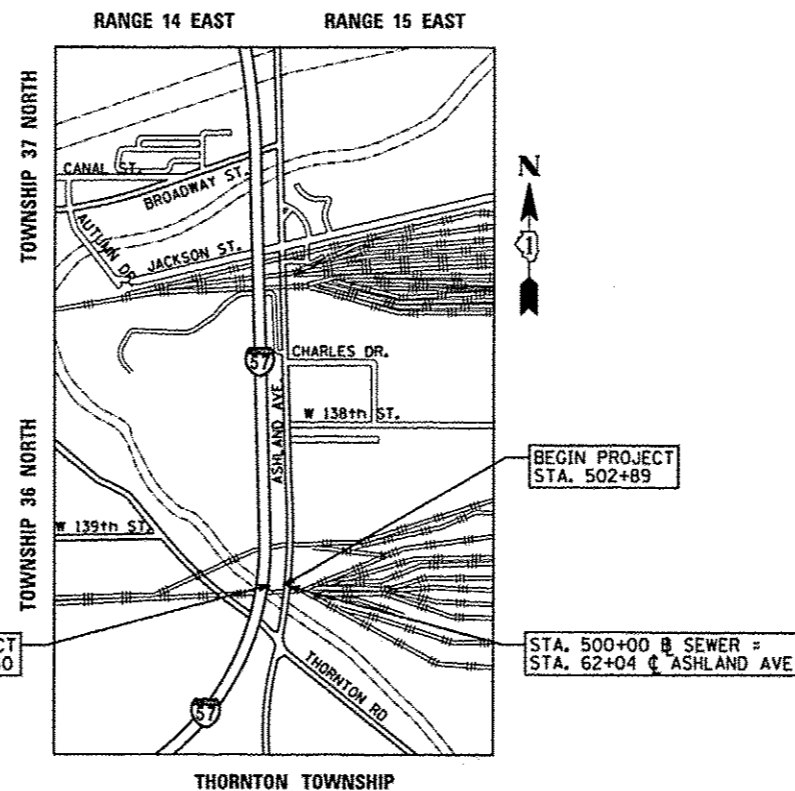


FULL SIZE PLANS HAVE BEEN PREPARED USING STANDARD ENGINEERING SCALES. REDUCED SIZED PLANS WILL NOT CONFORM TO STANDARD SCALES. IN MAKING MEASUREMENTS ON REDUCED PLANS, THE ABOVE SCALES MAY BE USED.

J.U.L.I.E.  
JOINT UTILITY LOCATION INFORMATION FOR EXCAVATION  
1-800-892-0123  
OR 811  
C.U.A.N.  
CHICAGO UTILITY ALERT NETWORK  
1-312-744-7000

PROJECT ENGINEER: PETER JOHNSTON (GRAEF) 773-399-0112  
PROJECT MANAGER: KEN ENG (IDOT) 847-705-4247

CONTRACT NO. 60R82



GROSS AND NET LENGTH OF PROJECT = 352 FEET (0.07 MILES)



PROFESSIONAL ENGINEER'S SIGN & SEAL  
*Peter M. Johnston*  
EXPIRES: 11/30/13

STATE OF ILLINOIS  
DEPARTMENT OF TRANSPORTATION  
DIVISION OF HIGHWAYS  
SUBMITTED April 24 2013  
*John P. ...*  
DEPUTY DIRECTOR OF HIGHWAYS, REGION ENGINEER  
June 28 2013  
*John D. Baranzoni, PE*  
ENGINEER OF DESIGN AND ENVIRONMENT  
June 28 2013  
*Ones Osman, PE*  
DIRECTOR OF HIGHWAYS, CHIEF ENGINEER

PRINTED BY THE AUTHORITY  
OF THE STATE OF ILLINOIS

**INDEX OF SHEETS**

SHEET NO.	DESCRIPTION
1	COVER SHEET
2	INDEX OF SHEETS, HIGHWAY STANDARDS AND GENERAL NOTES
3	SUMMARY OF QUANTITIES
4	ALIGNMENT AND BENCHMARKS
5	EROSION CONTROL AND RESTORATION PLAN
6	DRAINAGE PLAN AND PROFILE
7-12	S. U. E. PLANS
13	DRIVEWAY DETAILS - DISTANCE BETWEEN R. O. W. AND FACE OF CURB IS LESS THAN 15' (B002)
14	DETAILS FOR DEPRESSED CURB & GUTTER AND SHOULDER TREATMENT AT TBT TY 1 SPL (BD 34)
15	TRAFFIC CONTROL AND PROTECTION FOR SIDE ROADS, INTERSECTIONS, AND DRIVEWAYS (TC 10)
16	ARTERIAL ROAD INFORMATION SIGN (TC 22)

**HIGHWAY STANDARDS**

STD. NO.	TITLE
000001-06	STANDARD SYMBOLS, ABBREVIATIONS AND PATTERNS
001001-02	AREAS OF REINFORCEMENT BARS
280001-07	TEMPORARY EROSION CONTROL SYSTEMS
424026-01	ENTRANCE / ALLEY PEDESTRIAN CROSSINGS
542001-03	CONCRETE END SECTIONS FOR PIPE CULVERTS 15" THRU 84" DIAMETER
602401-03	MANHOLE, TYPE A
602601-02	PRECAST REINFORCED CONCRETE FLAT SLAB TOP
602701-02	MANHOLE STEPS
604001-03	FRAME AND LIDS, TYPE 1
701101-03	OFF ROAD OPERATIONS, MULTILANE, 15' TO 24' FROM PAVEMENT EDGE
701106-02	OFF ROAD OPERATIONS, MULTILANE, MORE THAN 15' (4.5 m) AWAY
701601-08	URBAN LANE CLOSURE, MULTILANE, 1W OR 2W WITH NONTRAVERSABLE MEDIAN
701901-02	TRAFFIC CONTROL DEVICES

**GENERAL NOTES**

- BEFORE STARTING ANY EXCAVATION, THE CONTRACTOR SHALL CALL "J. U. L. I. E." AT 800-892-0123 FOR FIELD LOCATIONS OF BURIED ELECTRIC, TELEPHONE AND GAS FACILITIES. (48 HOUR NOTIFICATION IS REQUIRED).
- THE CONTRACTOR SHALL COORDINATE CONSTRUCTION ACTIVITIES WITH UTILITY COMPANIES.
- THE CONTRACTOR WILL NOT BE ALLOWED TO SET UP A YARD OR FIELD OFFICE ON STATE PROPERTY WITHOUT WRITTEN PERMISSION FROM THE DEPARTMENT.
- THE CONTRACTOR SHALL CONTACT THE TRAFFIC CONTROL SUPERVISOR AT (847) 705-4470 A MINIMUM 72 HOURS IN ADVANCE OF BEGINNING WORK.
- THE CONTRACTOR SHALL BE REQUIRED TO PROVIDE ACCESS TO ABUTTING PROPERTY AT ALL TIMES DURING THE CONSTRUCTION OF THIS PROJECT.
- IT SHALL BE THE CONTACTOR'S RESPONSIBILITY TO VERIFY ALL DIMENSIONS AND CONDITIONS EXISTING IN THE FIELD PRIOR TO CONSTRUCTION AND ORDERING OF MATERIALS.
- FOR STORM SEWER CONSTRUCTED UNDER THE ROADWAY, BACKFILLING METHODS TWO AND THREE AUTHORIZED UNDER THE PROVISIONS OF ARTICLE 550.07 OF THE STANDARD SPECIFICATIONS WILL NOT BE ALLOWED.
- THE COST OF CONNECTING EXISTING STORM SEWERS TO PROPOSED STORM SEWERS AND TO PROPOSED DRAINAGE STRUCTURES AND THE COST OF CONNECTING PROPOSED STORM SEWERS TO EXISTING DRAINAGE STRUCTURES WILL NOT BE PAID FOR SEPARATELY BUT INCLUDED IN THE COST OF THE VARIOUS DRAINAGE ITEMS.

FILE NAME *	USER NAME * I485	DESIGNED - EF	REVISED -	<b>STATE OF ILLINOIS DEPARTMENT OF TRANSPORTATION</b>	<b>ASHLAND AVE. (THORNTON RD. - BROADWAY ST.) INDEX OF SHEETS, HIGHWAY STANDARDS, AND GENERAL NOTES</b>				F.A.U. RTG.	SECTION	COUNTY	TOTAL SHEETS	SHEET NO.
H:\Jobs\2011\20113012-06\CAD\Site\dgn\00	60R82\0160R82-idx-gennote.dgn	DRAWN - EF	REVISED -		2857	146-T	COOK	16	2				
	PLOT SCALE * 1/8" = 1' in.	CHECKED - RS	REVISED -		CONTRACT NO. 60R82				ILLINOIS FED. AID PROJECT				
	PLOT DATE * 4/25/2013	DATE - 05-09-2013	REVISED -		SCALE: 1"=50'	SHEET 1 OF 1	SHEETS STA.	TO STA.					

7

100% STATE

PAY ITEM NUMBER	DESCRIPTION	UNIT	URBAN TOTAL QUANTITY	0044 DRAINAGE
20100500	TREE REMOVAL, ACRES	ACRE	0.10	0.10
20800150	TRENCH BACKFILL	CU YD	733	733
21101615	TOPSOIL FURNISH AND PLACE, 4"	SQ YD	941	941
25000210	SEEDING, CLASS 2A	ACRE	0.20	0.20
25000400	NITROGEN FERTILIZER NUTRIENT	POUND	18	18
25000600	POTASSIUM FERTILIZER NUTRIENT	POUND	18	18
25100630	EROSION CONTROL BLANKET	SQ YD	941	941
28000250	TEMPORARY EROSION CONTROL SEEDING	POUND	10	10
28000400	PERIMETER EROSION BARRIER	FOOT	1,057	1,057
28100109	STONE RIPRAP, CLASS A5	SQ YD	16	16
28200200	FILTER FABRIC	SQ YD	16	16
40200800	AGGREGATE SURFACE COURSE, TYPE B	TON	281	281
54261236	CONCRETE END SECTION, STANDARD 542001, 36", 1:2	EACH	1	1
550A0450	STORM SEWERS, CLASS A, TYPE 2 36"	FOOT	319	319
550A0750	STORM SEWERS, CLASS A, TYPE 3 36"	FOOT	132	132
60221100	MANHOLES, TYPE A, 5'-DIAMETER, TYPE 1 FRAME, CLOSED LID	EACH	5	5
60500040	REMOVING MANHOLES	EACH	1	1
* 66900200	NON-SPECIAL WASTE DISPOSAL	CU YD	800	800
* 66900450	SPECIAL WASTE PLANS AND REPORTS	L SUM	1	1

100% STATE

PAY ITEM NUMBER	DESCRIPTION	UNIT	URBAN TOTAL QUANTITY	0044 DRAINAGE
* 66900530	SOIL DISPOSAL ANALYSIS	EACH	2	2
67000400	ENGINEER'S FIELD OFFICE, TYPE A	CAL MO	6	6
67100100	MOBILIZATION	L SUM	1	1
70102630	TRAFFIC CONTROL AND PROTECTION, STANDARD 701601	L SUM	1	1
Z0013798	CONSTRUCTION LAYOUT	L SUM	1	1
Z0030850	TEMPORARY INFORMATION SIGNING	SO FT	51	51
Z0048665	RAILROAD PROTECTIVE LIABILITY INSURANCE	L SUM	1	1
Z0064800	SELECTIVE CLEARING	UNIT	6	6

\* Specialty Items

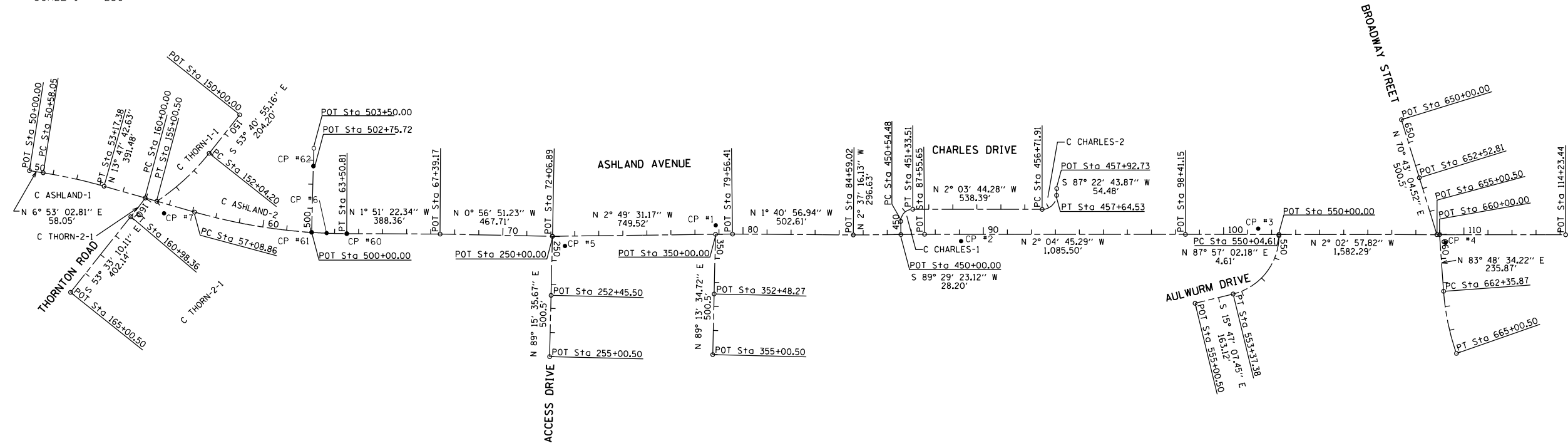
Rev.

FILE NAME: H:\Jobs\2011\20113012-06\CAO\516\146\001\20110902\DIGOR02-146-500.dgn	USER NAME: 1465	DESIGNED: EF	REVISED:	STATE OF ILLINOIS DEPARTMENT OF TRANSPORTATION	ASHLAND AVE. (THORNTON RD. - BROADWAY ST.) SUMMARY OF QUANTITIES	F.A.U. RTE.: 2857	SECTION: 146-T	COUNTY: COOK	TOTAL SHEETS: 16	SHEET NO.: 3	
PLOT SCALE: 100,0000' / 1" = 100'	CHECKED: RS	REVISED:	SCALE: 1"=50'			SHEET 1	OF 1 SHEETS	STA. TO STA.	ILLINOIS FED. AID PROJECT CONTRACT NO. 60R82		
PLOT DATE: 5/6/2013	DATE: 05-09-2013	REVISED:									

EXIST. CURVE ASHLAND-1 PI STA. = 51+87.87 $\Delta = 6^\circ 54' 40''$ (RT) $D = 2^\circ 39' 54''$ $R = 2,150.00'$ $T = 129.82'$ $L = 259.33'$ $E = 3.92'$ $e =$ $T.R. =$ $S.E. RUN =$ $P.C. STA. = 50+58.05$ $P.T. STA. = 53+17.38$	EXIST. CURVE ASHLAND-2 PI STA. = 30+31.85 $\Delta = 15^\circ 39' 05''$ (LT) $D = 2^\circ 26' 17''$ $R = 2,350.00'$ $T = 12322.98'$ $L = 641.95'$ $E = 22.09'$ $e =$ $T.R. =$ $S.E. RUN =$ $P.C. STA. = 57+08.86$ $P.T. STA. = 63+50.81$	EXIST. CURVE THORN-1 PI STA. = 153+53.52 $\Delta = 17^\circ 32' 20''$ (RT) $D = 5^\circ 55' 10''$ $R = 967.94'$ $T = 149.32'$ $L = 296.30'$ $E = 11.45'$ $e =$ $T.R. =$ $S.E. RUN =$ $P.C. STA. = 152+04.20$ $P.T. STA. = 155+00.50$	EXIST. CURVE THORN-2-1 PI STA. = 160+49.21 $\Delta = 4^\circ 49' 19''$ (RT) $D = 4^\circ 54' 08''$ $R = 1,168.74'$ $T = 49.21'$ $L = 98.36'$ $E = 1.04'$ $e =$ $T.R. =$ $S.E. RUN =$ $P.C. STA. = 160+00.00$ $P.T. STA. = 160+98.36$	EXIST. CURVE CHARLES-1 PI STA. = 451+04.97 $\Delta = 90^\circ 33' 32''$ (RT) $D = 114^\circ 35' 30''$ $R = 50.00'$ $T = 50.49'$ $L = -79.03'$ $E = 21.06'$ $e =$ $T.R. =$ $S.E. RUN =$ $P.C. STA. = 450+54.48$ $P.T. STA. = 451+33.51$	EXIST. CURVE CHARLES-2 PI STA. = 457+30.30 $\Delta = 88^\circ 26' 53''$ (LT) $D = 95^\circ 29' 35''$ $R = 60.00'$ $T = 58.40'$ $L = 92.62'$ $E = 23.73'$ $e =$ $T.R. =$ $S.E. RUN =$ $P.C. STA. = 456+71.91$ $P.T. STA. = 457+64.53$	EXIST. CURVE BROAD-2-1 PI STA. = 663+68.96 $\Delta = 15^\circ 09' 45''$ (LT) $D = 5^\circ 43' 46''$ $R = 1,000.00'$ $T = 133.09'$ $L = 264.63'$ $E = 8.82'$ $e =$ $T.R. =$ $S.E. RUN =$ $P.C. STA. =$ $P.T. STA. =$	EXIST. CURVE AULWURM-1 PI STA. = $\Delta = 76^\circ 15' 50''$ (RT) $D = 22^\circ 55' 06''$ $R = 250.00'$ $T = 196.25'$ $L = 332.76'$ $E = 67.83'$ $e =$ $T.R. =$ $S.E. RUN =$ $P.C. STA. = 550+04.61$ $P.T. STA. = 553+37.38$
---	---	--	--	--	--	---	---



SCALE 1" = 250'



ALIGNMENT COORDINATES - ASHLAND AVENUE

	STATION	NORTHING	EASTING
POB	50+00.00	1,810,882.60	1,168,071.38
PC	50+58.05	1,810,940.23	1,168,078.33
PI	51+87.87	1,811,069.12	1,168,093.89
PT	53+17.38	1,811,195.20	1,168,124.85
PC	57+08.86	1,811,575.39	1,168,218.20
PI	60+31.85	1,811,889.05	1,168,295.22
PT	63+50.81	1,812,211.87	1,168,284.75
POT	67+39.17	1,812,600.03	1,168,272.18
POT	72+06.89	1,813,067.68	1,168,264.44
POT	79+56.41	1,813,816.29	1,168,227.50
POT	84+59.02	1,814,318.68	1,168,212.74
POT	87+55.65	1,814,615.00	1,168,199.17
POT	98+41.15	1,815,699.79	1,168,159.79
POT	114+23.44	1,817,281.06	1,168,103.21

ALIGNMENT COORDINATES - 138th STREET

	STATION	NORTHING	EASTING
POB	350+00.00	1,813,745.58	1,168,230.99
POT	352+48.27	1,813,748.93	1,168,479.23
POT	355+00.50	1,813,752.34	1,168,731.44

ALIGNMENT COORDINATES - ACCESS DRIVE

	STATION	NORTHING	EASTING
POB	50+00.00	1,813,067.68	1,168,264.44
POT	50+58.05	1,813,070.85	1,168,509.92
POT	51+87.87	1,813,074.14	1,168,764.91

ALIGNMENT COORDINATES - AULWURM DRIVE

	STATION	NORTHING	EASTING
POB	550+00.00	1,816,088.87	1,168,145.87
PC	550+04.61	1,816,089.03	1,168,150.48
PI	552+00.86	1,816,096.05	1,168,346.60
PT	553+37.38	1,815,907.20	1,168,399.99
POT	555+00.50	1,815,750.23	1,168,444.36

ALIGNMENT COORDINATES - BROADWAY STREET-1

	STATION	NORTHING	EASTING
POB	650+00.00	1,816,580.42	1,167,649.93
POT	652+52.81	1,816,663.90	1,167,888.50
POT	655+00.50	1,816,745.69	1,168,122.36

ALIGNMENT COORDINATES - BROADWAY STREET-2

	STATION	NORTHING	EASTING
POB	550+00.00	1,816,756.73	1,168,121.97
PC	550+04.61	1,816,782.16	1,168,356.46
PI	552+00.86	1,816,796.51	1,168,488.78
PT	553+37.38	1,816,844.97	1,168,612.74

ALIGNMENT COORDINATES - CHARLES DRIVE

	STATION	NORTHING	EASTING
POB	450+00.00	1,814,516.28	1,168,203.69
PC	450+54.48	1,814,513.79	1,168,149.27
PI	451+04.97	1,814,511.48	1,168,098.83
PT	451+33.51	1,814,561.94	1,168,097.01
PC	456+71.91	1,815,099.98	1,168,077.64
PI	457+30.30	1,815,158.34	1,168,075.53
PT	457+64.53	1,815,157.82	1,168,017.14
POT	457+92.73	1,815,157.57	1,167,988.94

ALIGNMENT COORDINATES - THORNTON ROAD-1

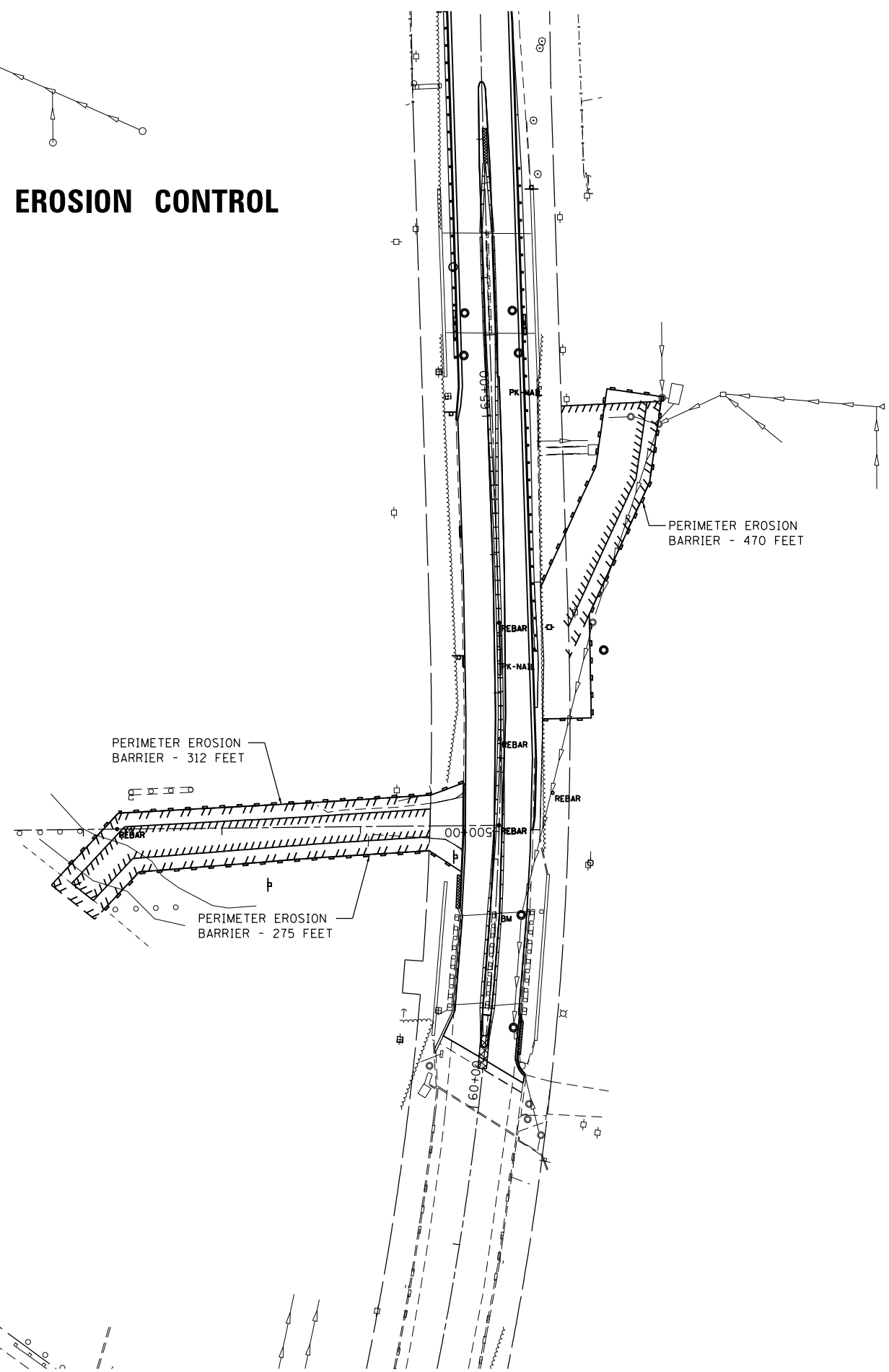
	STATION	NORTHING	EASTING
POB	150+00.00	1,811,748.14	1,167,807.39
PC	152+04.20	1,811,627.20	1,167,971.93
PI	153+53.52	1,811,538.23	1,168,091.84
PT	155+00.50	1,811,417.26	1,168,179.38

ALIGNMENT COORDINATES - THORNTON ROAD-2

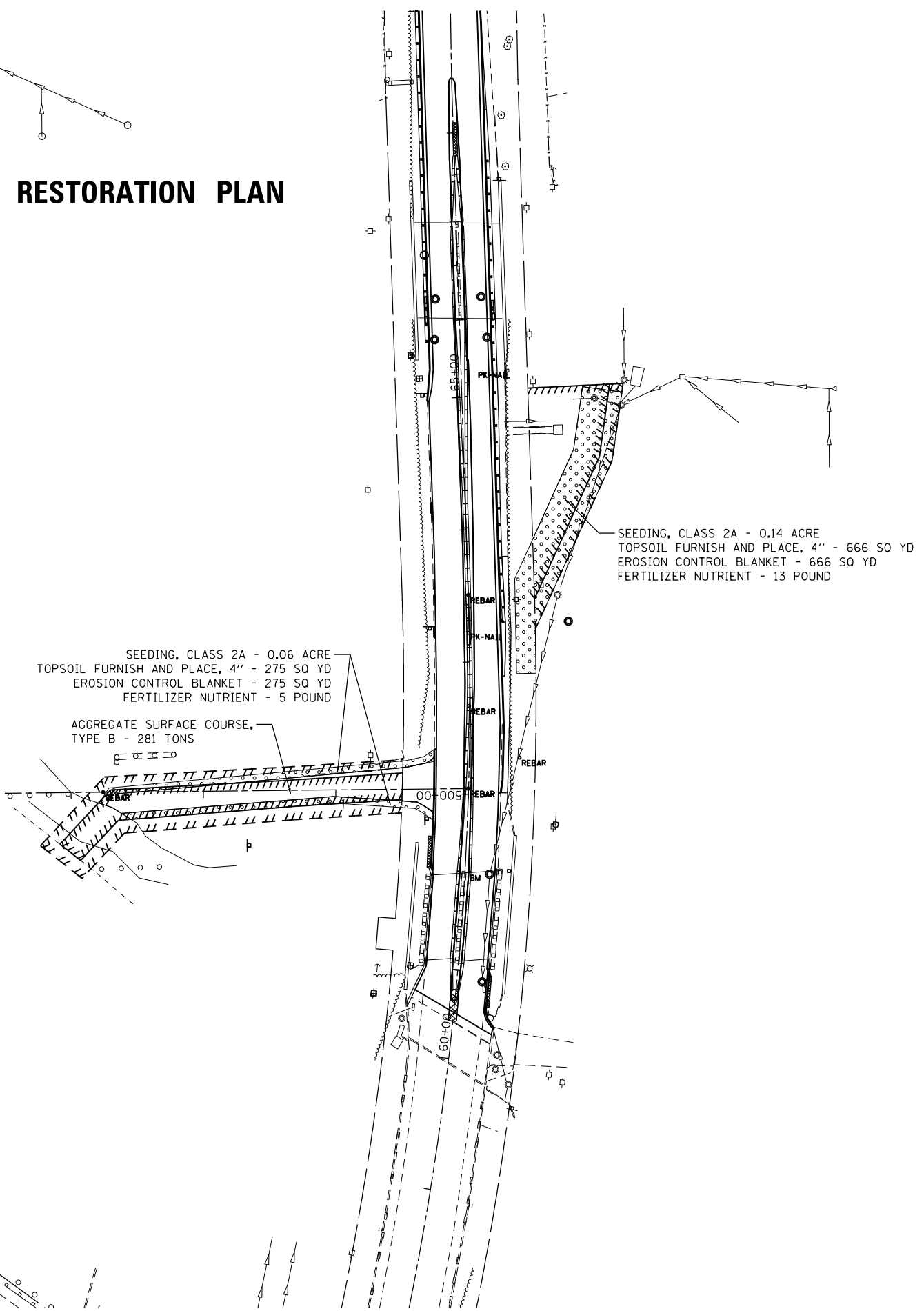
	STATION	NORTHING	EASTING
PC	160+00.00	1,811,368.26	1,168,167.34
PI	160+49.22	1,811,341.25	1,168,208.48
PT	160+98.36	1,811,310.88	1,168,247.20
POT	165+00.50	1,811,071.98	1,168,570.68

CONTROL POINT	NORTHING	EASTING	ELEVATION	DESCRIPTION
1	1,813,745.21	1,168,193.42	596.63	REBAR ON WEST SIDE OF ASHLAND AVE. 3 FT. WEST OF WEST EDGE OF PAVEMENT ON EXTENDED CENTERLINE OF 138TH STREET.
2	1,814,767.92	1,168,222.18	595.52	"X" AT NE CORNER OF ASHLAND AVE. AND CONCRETE DRIVEWAY TO RIVERDALE INDUSTRIES
3	1,816,001.67	1,168,124.75	595.19	REBAR ON THE WEST SIDE OF ASHLAND AND AULWURM DR.
4	1,816,782.41	1,168,154.82	597.38	REBAR AT THE NE CORNER OF ASHLAND AVE. AND BROADWAY ST.
5	1,813,121.29	1,168,302.56	595.48	REBAR AT THE NE CORNER OF ASHLAND AVE. AND ACCESS RD TO TRI-STATE DISPOSAL INC.
6	1,812,127.86	1,168,285.34	585.61	REBAR IN THE CENTER MEDIAN BETWEEN 1ST 2 RR BRIDGES. NORTH OF THORNTON RD.
7	1,811,449.00	1,168,227.98	594.81	REBAR AT THE NE CORNER OF ASHLAND AVE. AND THORNTON RD.
60	1,812,211.84	1,168,284.79	584.22	REBAR IN THE CENTER MEDIAN OF ASHLAND AVE. NORTH OF CL 1ST RR BRIDGE AND NORTH OF THORNTON RD.
61	1,812,065.56	1,168,284.64	586.99	REBAR IN CENTER MEDIAN 146.28' SOUTH OF CP #60
62	1,812,062.72	1,168,008.94	593.07	REBAR UNDER I-57 BRIDGE 275.72 WEST OF CP #61

# EROSION CONTROL



# RESTORATION PLAN



FILE NAME =	USER NAME = 1485	DESIGNED - EF	REVISED -
H:\Jobs\2011\2011012-06\CAD\Site\dgn\0060R82\DI60R82-sht-restoration.dgn		DRAWN - EF	REVISED -
	PLOT SCALE = 100.0000' / 1" =	CHECKED - RS	REVISED -
	PLOT DATE = 4/25/2013	DATE - 05-09-2013	REVISED -

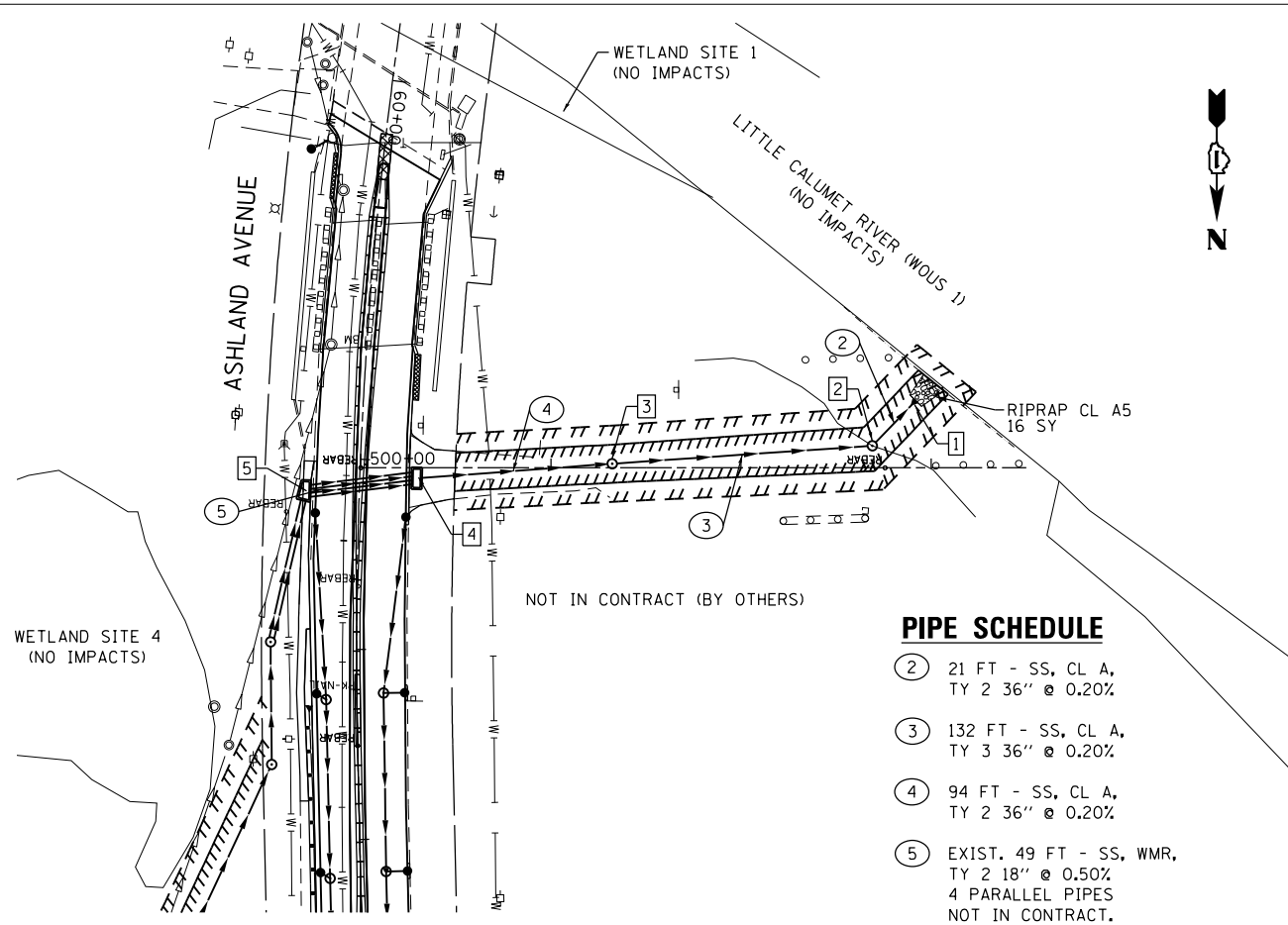
**STATE OF ILLINOIS  
DEPARTMENT OF TRANSPORTATION**

**ASHLAND AVE. (THORNTON RD. - BROADWAY ST.)  
EROSION CONTROL AND RESTORATION PLAN**

SCALE: 1"=50' SHEET 1 OF 1 SHEETS STA. TO STA.

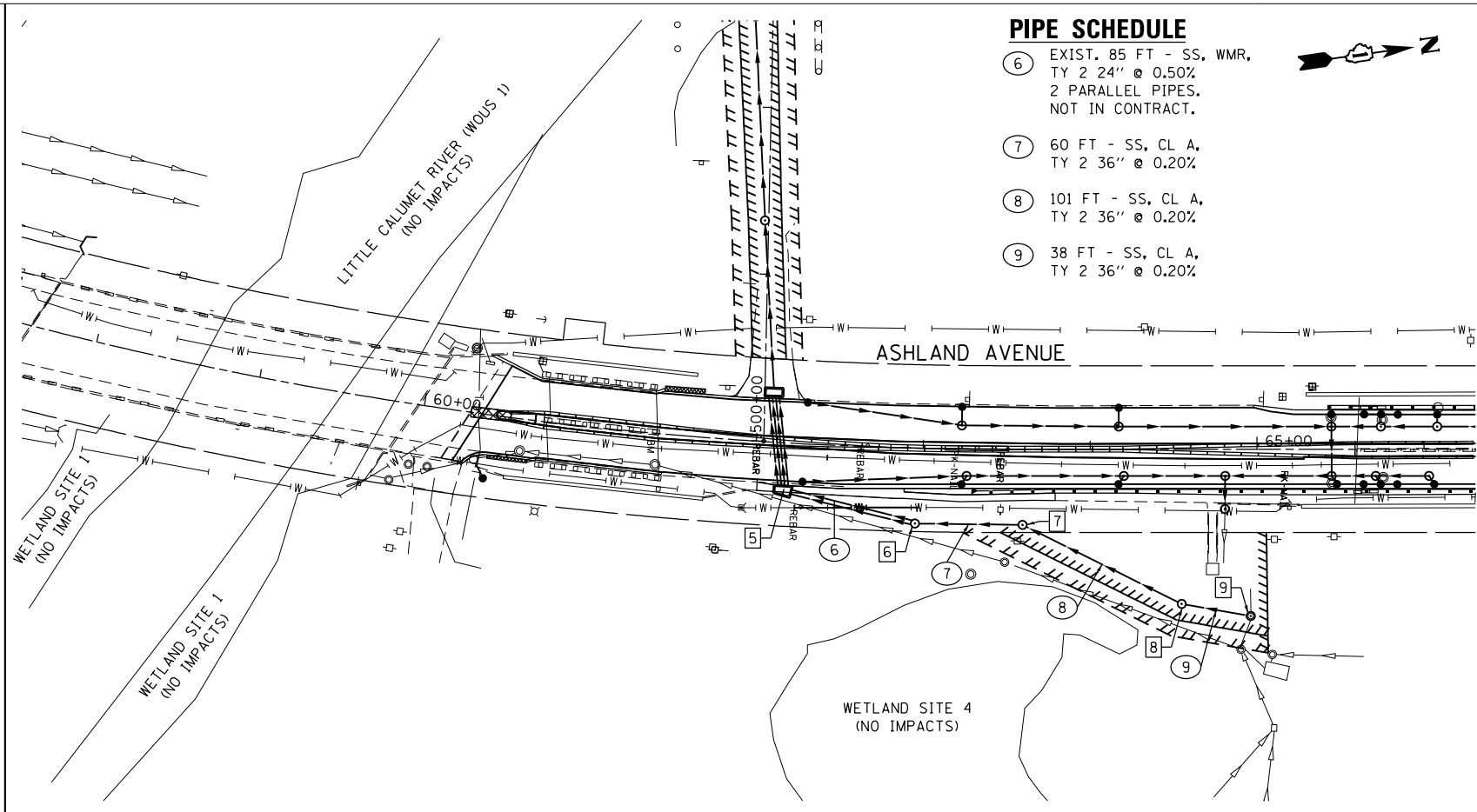
F.A.U. RTE.	SECTION	COUNTY	TOTAL SHEETS	SHEET NO.
2857	146-T	COOK	16	5
CONTRACT NO. 60R82				
ILLINOIS FED. AID PROJECT				

PLAN	SURVEYED	DATE
	PLOTTED	BY
	ALIGNED	
	CHECKED	
	FILE NAME	
	NO.	



**PIPE SCHEDULE**

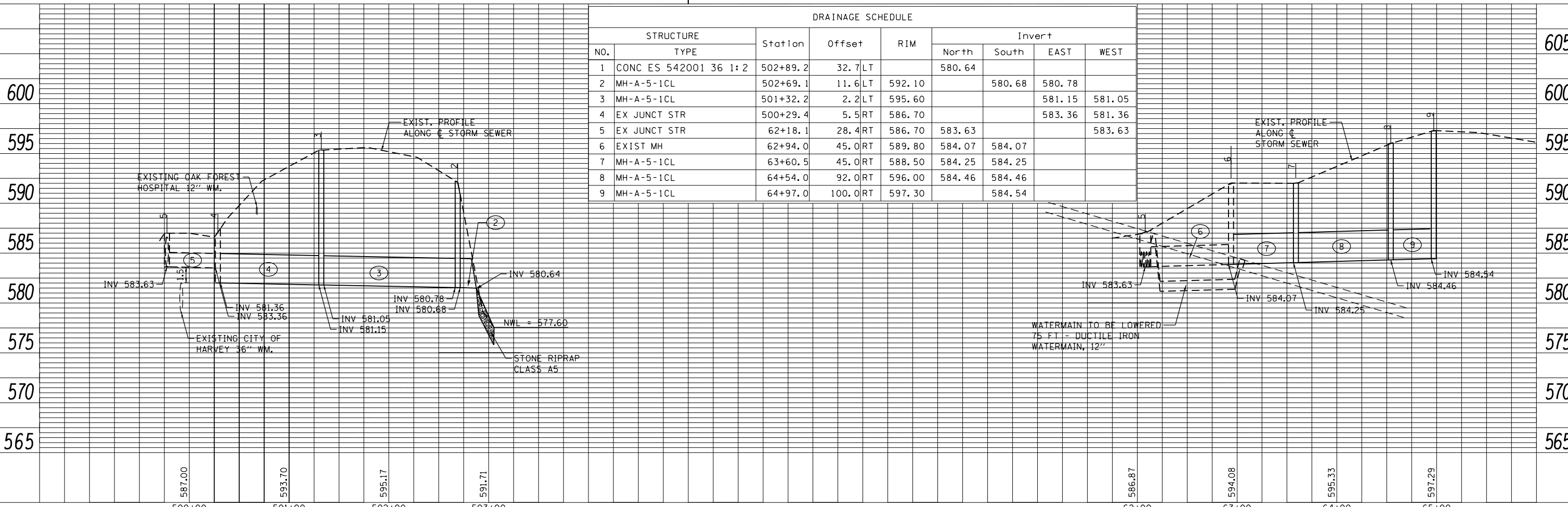
- ② 21 FT - SS, CL A, TY 2 36" @ 0.20%
- ③ 132 FT - SS, CL A, TY 3 36" @ 0.20%
- ④ 94 FT - SS, CL A, TY 2 36" @ 0.20%
- ⑤ EXIST. 49 FT - SS, WMR, TY 2 18" @ 0.50%  
4 PARALLEL PIPES  
NOT IN CONTRACT.

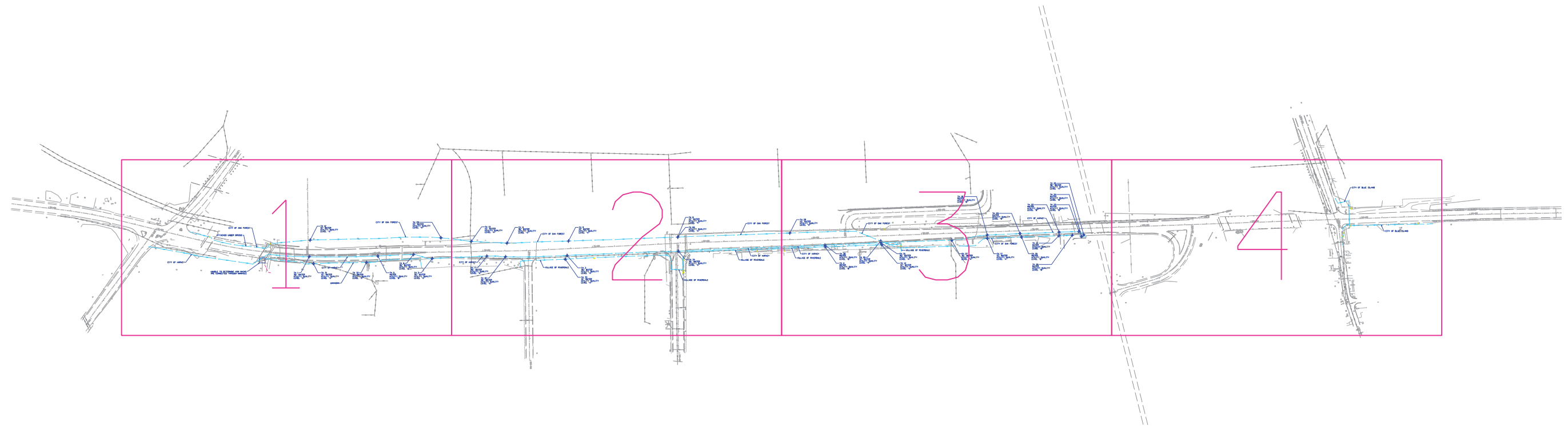


**PIPE SCHEDULE**

- ⑥ EXIST. 85 FT - SS, WMR, TY 2 24" @ 0.50%  
2 PARALLEL PIPES,  
NOT IN CONTRACT.
- ⑦ 60 FT - SS, CL A, TY 2 36" @ 0.20%
- ⑧ 101 FT - SS, CL A, TY 2 36" @ 0.20%
- ⑨ 38 FT - SS, CL A, TY 2 36" @ 0.20%

PROFILE	SURVEYED	DATE
	PLOTTED	BY
	GRADES CHECKED	
	STRUCTURE NOTATIONS CHECKED	
	NO.	





UTILITY OWNERS

CITY OF BLUE ISLAND = WATER  
 CITY OF HARVEY = WATER  
 CITY OF OAK FOREST = WATER  
 UNKNOWN = WATER  
 VILLAGE OF RIVERDALE = WATER

Utilities shown on these plans as depicted in the legend have been investigated by Cardno TBE in accordance with SUE Industry Standards. All other information shown has been provided to Cardno TBE by others. Cardno TBE SUE field investigation was performed 9/06/12 through 9/20/12. Changes to utilities after 9/20/12 may have been made and therefore may result in variances from this plan. Consideration should be given to updating this plan if deemed advisable prior to final design and construction.

ALL UTILITIES SHOWN QUALITY LEVEL "B"  
 UNLESS NOTED OTHERWISE.



TBE Job No. IL09510509  
 SUE Plan Page: Cover

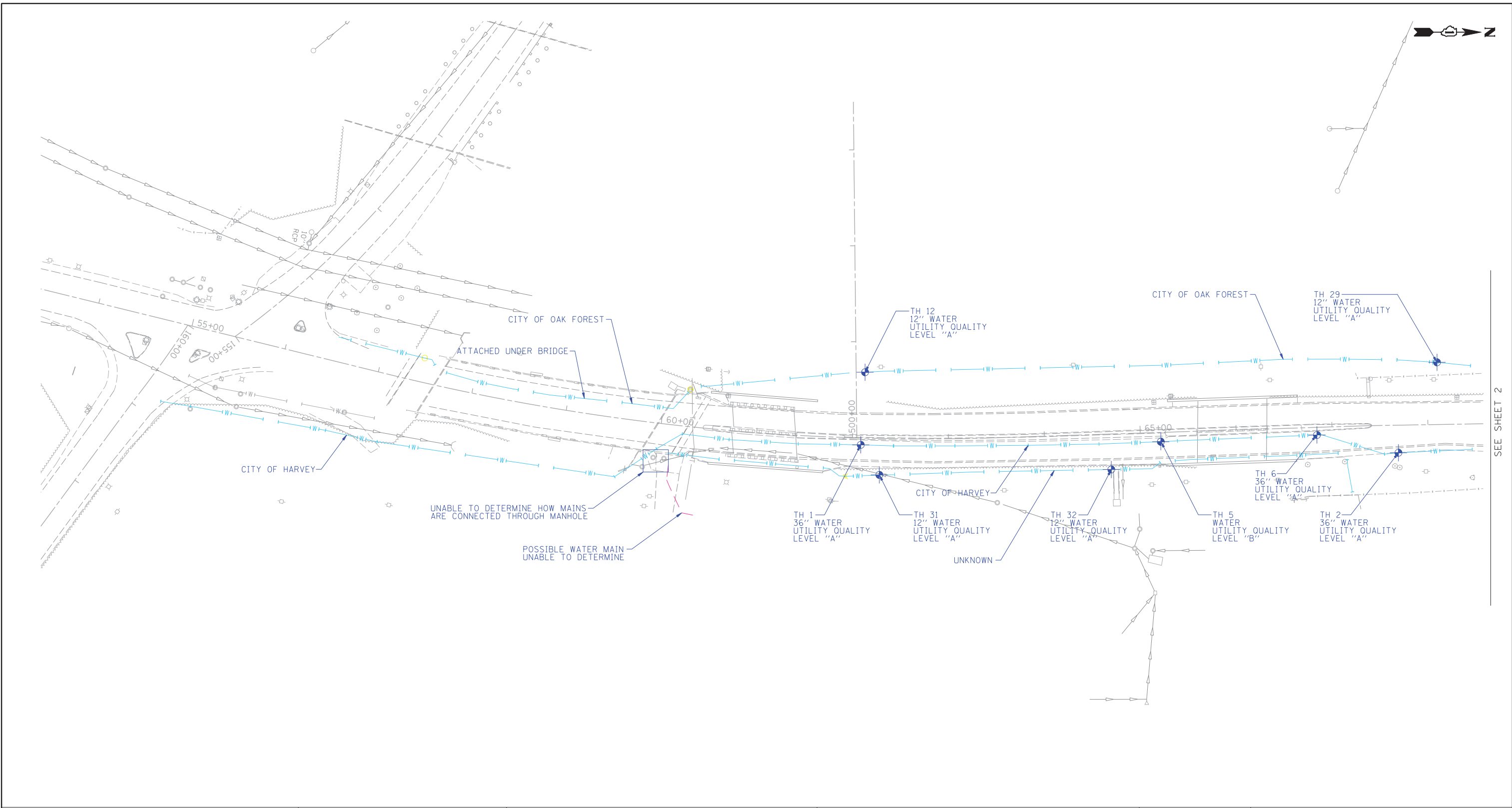
Utility Quality Level "A" : Visually Verified Test Hole  
 Utility Quality Level "B" : Designating/non Visually Verified Test Hole  
 Utility Quality Level "C" : Research with Survey  
 Utility Quality Level "D" : Records Research

DESIGNED	EG	REVISED	
DRAWN	SRK	REVISED	
CHECKED	KFS	REVISED	
DATE	9/28/12	REVISED	

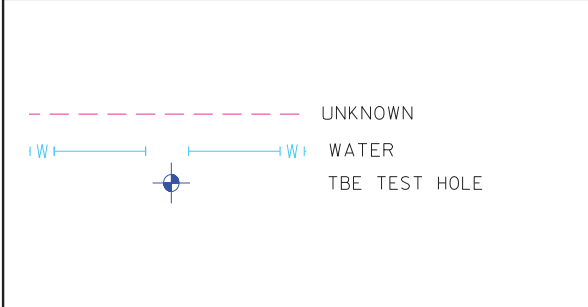
**STATE OF ILLINOIS  
 DEPARTMENT OF TRANSPORTATION**

**Ashland Avenue; Broadway to Thornton Road  
 Blue Island, Illinois**

F.A.U. RTE.	SECTION	COUNTY	TOTAL SHEETS	SHEET NO.
2857	146-T 2011-054-1	Cook	16	7
FED. ROAD DIST. NO. ILLINOIS IDOT Project No.			Contract No. 60P64 60R82	



SEE SHEET 2



UTILITY OWNERS	
CITY OF BLUE ISLAND = WATER	
CITY OF HARVEY = WATER	
CITY OF OAK FOREST = WATER	
UNKNOWN = WATER	
VILLAGE OF RIVERDALE = WATER	

Utilities shown on these plans as depicted in the legend have been investigated by Cardno TBE in accordance with SUE Industry Standards. All other information shown has been provided to Cardno TBE by others. Cardno TBE SUE field investigation was performed 9/06/12 through 9/20/12. Changes to utilities after 9/20/12 may have been made and therefore may result in variances from this plan. Consideration should be given to updating this plan if deemed advisable prior to final design and construction.

ALL UTILITIES SHOWN QUALITY LEVEL "B" UNLESS NOTED OTHERWISE.

TBE Job No. IL09510509  
SUE Plan Page: 1 of 4

Utility Quality Level "A" : Visually Verified Test Hole  
Utility Quality Level "B" : Designating/non Visually Verified Test Hole  
Utility Quality Level "C" : Research with Survey  
Utility Quality Level "D" : Records Research

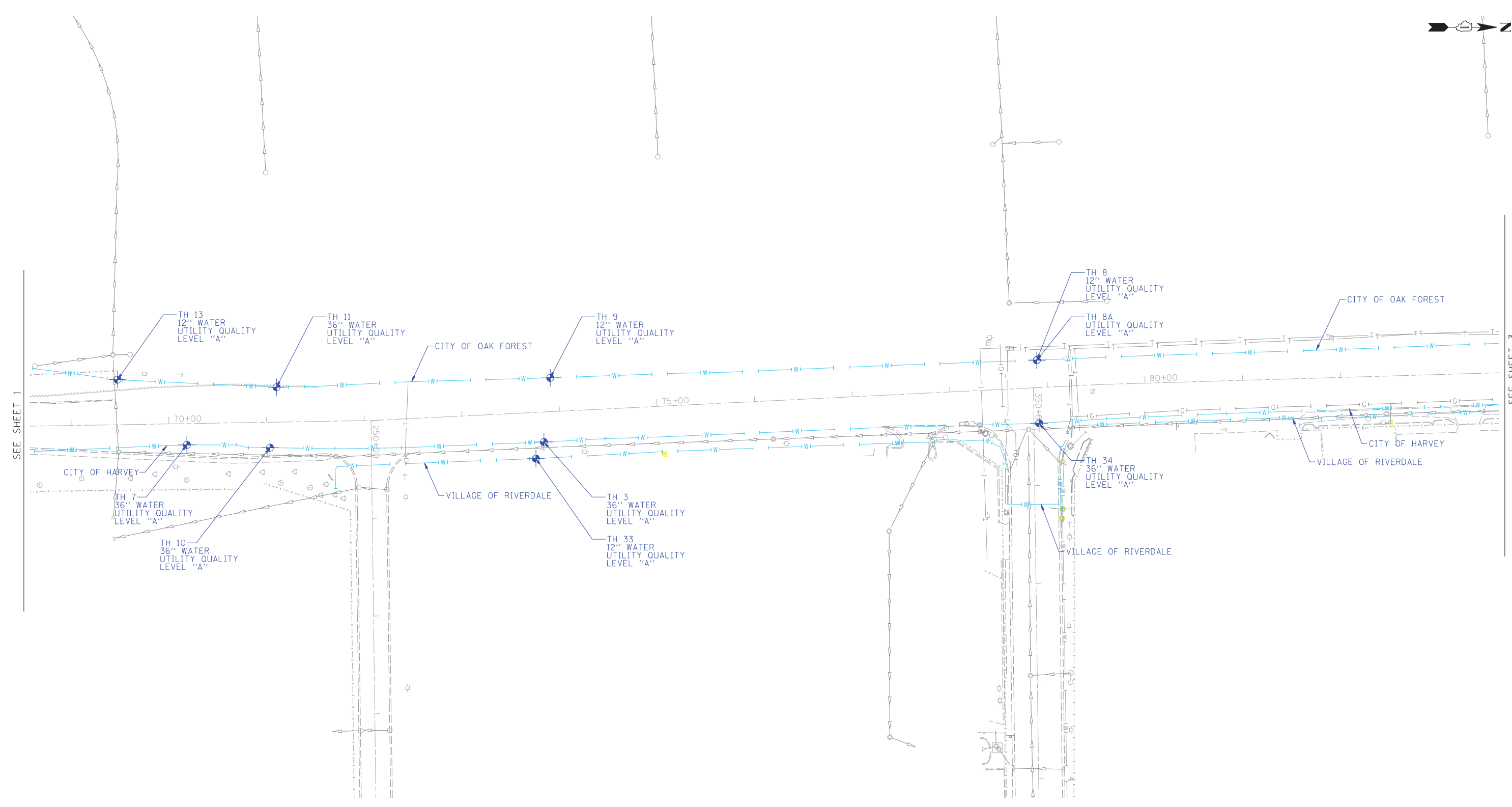
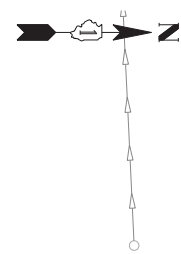
DESIGNED <i>EG</i>	REVISED
DRAWN <i>SRK</i>	REVISED
CHECKED <i>KFS</i>	REVISED
DATE <i>9/28/12</i>	REVISED

**STATE OF ILLINOIS  
DEPARTMENT OF TRANSPORTATION**

**Ashland Avenue; Broadway to Thornton Road  
Blue Island, Illinois**

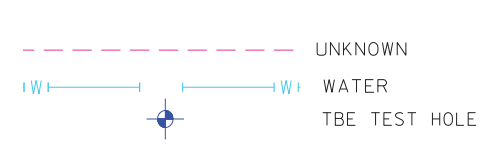
F.A.U. RTE.	SECTION	COUNTY	TOTAL SHEETS	SHEET NO.
2857	146-T	2011-054-1	Cook	16 8
Contract No. 60P64 60R82				
FED. ROAD DIST. NO. ILLINOIS IDOT Project No.				





SEE SHEET 1

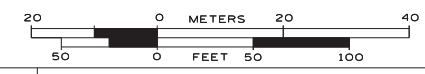
SEE SHEET 3



UTILITY OWNERS  
 CITY OF BLUE ISLAND = WATER  
 CITY OF HARVEY = WATER  
 CITY OF OAK FOREST = WATER  
 UNKNOWN = WATER  
 VILLAGE OF RIVERDALE = WATER

Utilities shown on these plans as depicted in the legend have been investigated by Cardno TBE in accordance with SUE Industry Standards. All other information shown has been provided to Cardno TBE by others. Cardno TBE SUE field investigation was performed 9/06/12 through 9/20/12. Changes to utilities after 9/20/12 may have been made and therefore may result in variances from this plan. Consideration should be given to updating this plan if deemed advisable prior to final design and construction.

ALL UTILITIES SHOWN QUALITY LEVEL "B"  
 UNLESS NOTED OTHERWISE.



TBE Job No. IL09510509  
 SUE Plan Page: 2 of 4

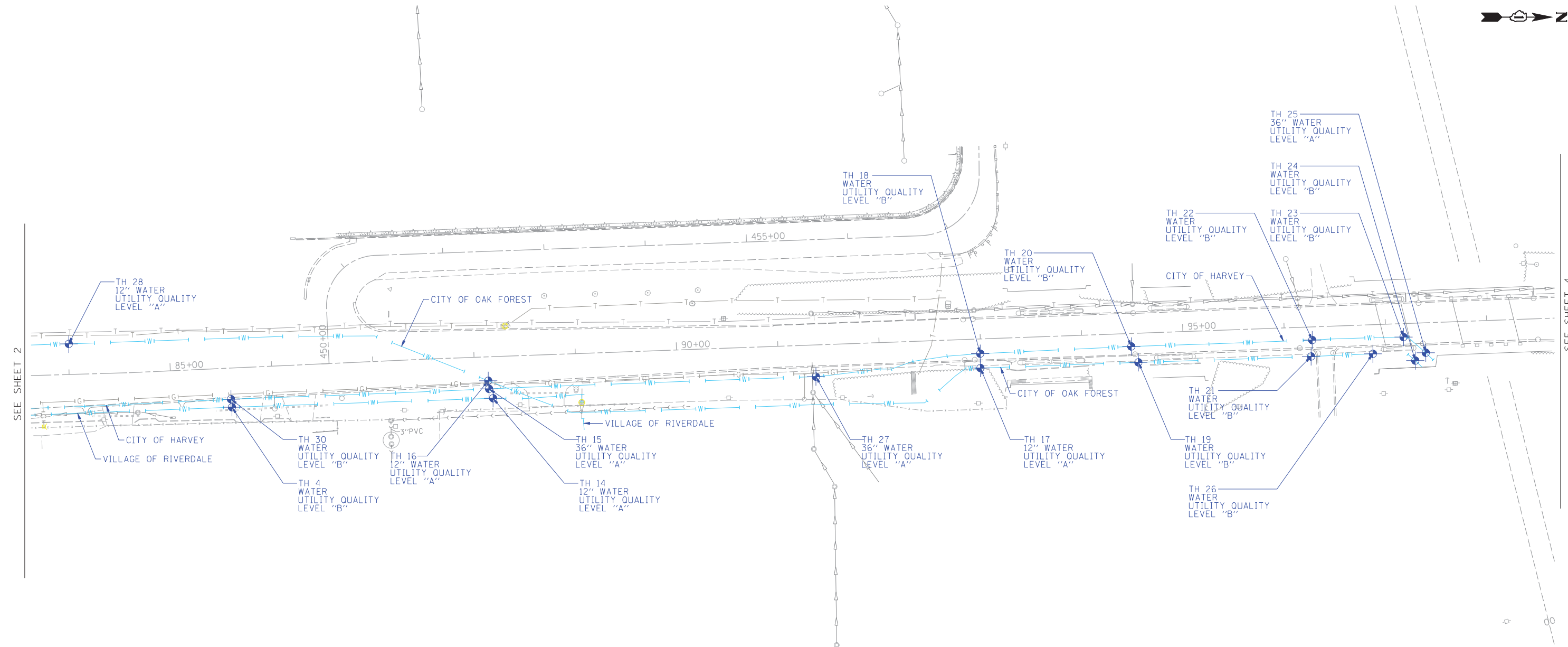
Utility Quality Level "A" : Visually Verified Test Hole  
 Utility Quality Level "B" : Designating/non Visually Verified Test Hole  
 Utility Quality Level "C" : Research with Survey  
 Utility Quality Level "D" : Records Research

DESIGNED	EG	REVISED	
DRAWN	SRK	REVISED	
CHECKED	KFS	REVISED	
DATE	9/28/12	REVISED	

STATE OF ILLINOIS  
 DEPARTMENT OF TRANSPORTATION

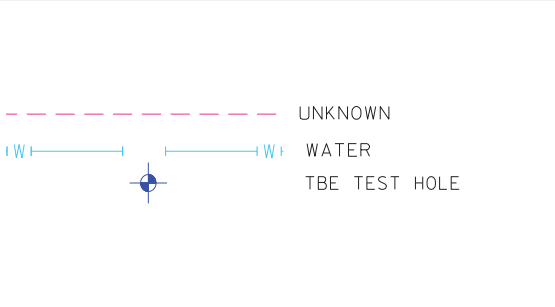
Ashland Avenue; Broadway to Thornton Road  
 Blue Island, Illinois

F.A.U. RTE.	SECTION	COUNTY	TOTAL SHEETS	SHEET NO.
2857	146-T	2011-054-1	16	9
FED. ROAD DIST. NO. ILLINOIS IDOT Project No.			Contract No. 60P64 60R82	



SEE SHEET 2

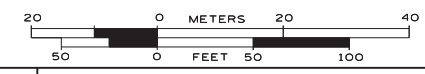
SEE SHEET 4



UTILITY OWNERS	
CITY OF BLUE ISLAND = WATER	
CITY OF HARVEY = WATER	
CITY OF OAK FOREST = WATER	
UNKNOWN = WATER	
VILLAGE OF RIVERDALE = WATER	

Utilities shown on these plans as depicted in the legend have been investigated by Cardno TBE in accordance with SUE Industry Standards. All other information shown has been provided to Cardno TBE by others. Cardno TBE SUE field investigation was performed 9/06/12 through 9/20/12. Changes to utilities after 9/20/12 may have been made and therefore may result in variances from this plan. Consideration should be given to updating this plan if deemed advisable prior to final design and construction.

ALL UTILITIES SHOWN QUALITY LEVEL "B" UNLESS NOTED OTHERWISE.



TBE Job No. IL09510509  
SUE Plan Page: 3 of 4

Utility Quality Level "A" : Visually Verified Test Hole  
Utility Quality Level "B" : Designating/non Visually Verified Test Hole  
Utility Quality Level "C" : Research with Survey  
Utility Quality Level "D" : Records Research

DESIGNED <i>EG</i>	REVISED
DRAWN <i>SRK</i>	REVISED
CHECKED <i>KFS</i>	REVISED
DATE <i>9/28/12</i>	REVISED

**STATE OF ILLINOIS  
DEPARTMENT OF TRANSPORTATION**

**Ashland Avenue; Broadway to Thornton Road  
Blue Island, Illinois**

F.A.U. RTE.	SECTION	COUNTY	TOTAL SHEETS	SHEET NO.
2857	146-T 2011-054-1	Cook	16	10

Contract No. 60P64 60R82

FED. ROAD DIST. NO. ILLINOIS IDOT Project No.



UTILITY OWNERS

CITY OF BLUE ISLAND = WATER  
 CITY OF HARVEY = WATER  
 CITY OF OAK FOREST = WATER  
 UNKNOWN = WATER  
 VILLAGE OF RIVERDALE = WATER

Utilities shown on these plans as depicted in the legend have been investigated by Cardno TBE in accordance with SUE Industry Standards. All other information shown has been provided to Cardno TBE by others. Cardno TBE SUE field investigation was performed 9/06/12 through 9/20/12. Changes to utilities after 9/20/12 may have been made and therefore may result in variances from this plan. Consideration should be given to updating this plan if deemed advisable prior to final design and construction.

ALL UTILITIES SHOWN QUALITY LEVEL "B"  
 UNLESS NOTED OTHERWISE.



TBE Job No. IL09510509  
 SUE Plan Page: 4 of 4

Utility Quality Level "A": Visually Verified Test Hole  
 Utility Quality Level "B": Designating/non Visually Verified Test Hole  
 Utility Quality Level "C": Research with Survey  
 Utility Quality Level "D": Records Research

DESIGNED	EG	REVISED	
DRAWN	SRK	REVISED	
CHECKED	KFS	REVISED	
DATE	9/28/12	REVISED	

STATE OF ILLINOIS  
 DEPARTMENT OF TRANSPORTATION

Ashland Avenue; Broadway to Thornton Road  
 Blue Island, Illinois

F.A.U. RTE.	SECTION	COUNTY	TOTAL SHEETS	SHEET NO.
2857	146-T 2011-054-1	Cook	16	11
Contract No. 60P64 60R82				
FED. ROAD DIST. NO. ILLINOIS IDOT Project No.				

**VERIFIED UTILITY INFORMATION**

TEST HOLE #	SIZE & TYPE	NORTHING	EASTING	EXISTING TOP ELEVATION	EXISTING CUT	REFERENCE ELEVATION	COMMENTS
1	36" W	1812069.68	1168292.19	582.09'	4.45'	586.54'	UTILITY QUALITY "A"
2	36" W	1812630.15	1168300.42	580.85'	4.71'	585.56'	UTILITY QUALITY "A"
3	36" W	1813244.62	1168286.40	589.78'	5.31'	595.09'	UTILITY QUALITY "A"
4	N/A W	1814420.43	1168246.77	592.22'	5.99'	598.21'	UTILITY QUALITY "B"
5	N/A W	1812382.44	1168288.95	575.85'	4.51'	580.36'	UTILITY QUALITY "B"
6	36" W	1812545.22	1168281.90	577.32'	4.62'	581.94'	UTILITY QUALITY "A"
7	36" W	1812879.15	1168289.32	588.71'	5.00'	593.71'	UTILITY QUALITY "A"
8	12" W	1813749.10	1168202.75	592.20'	4.57'	596.77'	UTILITY QUALITY "A"
8A	3" UNK	1813749.06	1168202.63	594.47'	2.30'	596.77'	UTILITY QUALITY "A"
9	12" W	1813251.11	1168220.76	590.71'	5.07'	595.78'	UTILITY QUALITY "A"
10	36" W	1812964.22	1168292.21	591.33'	3.61'	594.94'	UTILITY QUALITY "A"
11	12" W	1812970.94	1168230.39	590.22'	4.94'	595.16'	UTILITY QUALITY "A"
12	12" W	1812074.15	1168216.50	589.67'	1.91'	591.58'	UTILITY QUALITY "A"
13	12" W	1812808.20	1168222.58	591.40'	2.42'	593.82'	UTILITY QUALITY "A"
14	12" W	1814678.13	1168237.91	592.26'	3.27'	595.53'	UTILITY QUALITY "A"
15	36" W	1814674.17	1168228.66	591.09'	5.92'	597.01'	UTILITY QUALITY "A"
16	12" W	1814673.36	1168220.66	592.74'	4.33'	597.07'	UTILITY QUALITY "A"
17	12" W	1815159.11	1168208.11	583.02'	4.36'	587.38'	UTILITY QUALITY "B"
18	N/A W	1815158.88	1168193.91	580.36'	7.21'	587.57'	UTILITY QUALITY "B"
19	N/A W	1815314.96	1168202.50	583.29'	5.00'	588.29'	UTILITY QUALITY "B"
20	N/A W	1815308.00	1168186.81	582.07'	5.49'	587.56'	UTILITY QUALITY "B"
21	N/A W	1815485.43	1168196.72	583.06'	4.69'	587.75'	UTILITY QUALITY "B"
22	N/A W	1815486.52	1168180.55	582.67'	4.75'	587.42'	UTILITY QUALITY "B"
23	N/A W	1815576.67	1168177.56	583.40'	4.22'	587.62'	UTILITY QUALITY "B"
24	N/A W	1815588.26	1168200.76	585.86'	4.78'	590.64'	UTILITY QUALITY "B"
25	36" W	1815598.65	1168193.01	583.91'	4.50'	588.41'	UTILITY QUALITY "A"
26	N/A W	1815546.45	1168194.08	582.59'	5.32'	587.91'	UTILITY QUALITY "B"
27	36" W	1814996.76	1168216.62	583.83'	5.81'	589.64'	UTILITY QUALITY "A"
28	12" W	1814259.37	1168184.28	592.54'	5.22'	597.76'	UTILITY QUALITY "A"
29	12" W	1812670.37	1168206.17	589.81'	2.10'	591.91'	UTILITY QUALITY "A"
30	N/A W	1814419.45	1168238.82	592.31'	5.68'	597.99'	UTILITY QUALITY "B"
31	12" W	1812089.05	1168323.50	586.70'	1.99'	588.69'	UTILITY QUALITY "A"
32	12" W	1812330.83	1168317.88	579.49'	2.47'	581.96'	UTILITY QUALITY "A"
33	12" W	1813236.43	1168303.40	590.19'	5.39'	595.58'	UTILITY QUALITY "A"
34	36" W	1813751.44	1168267.31	591.10'	6.11'	597.21'	UTILITY QUALITY "A"

**NOTES**

TH #4, 19, 21, 24 & 26 - Unable to verify size & material of pipe due to excessive ground water infiltration within the excavated hole. However, by utilizing an air lance we were able to feel what is believed to be the top of a 12" water main.  
 TH #5, 18, 20, 22, 23 & 30 - Unable to verify size & material of pipe due to excessive ground water infiltration within the excavated hole. However, by utilizing an air lance we were able to feel what is believed to be the top & sides of a 36" water main.  
 TH #8A -Found unknown utility while excavating for water main. Appears to be a fiberglass material.  
 TH #17 - Briefly exposed 12" main before excessive ground water infiltrated the excavated hole. Manual depth was taken.  
 TH #34 - 36" water offset taken from centerline of 138th Street.

**ABBREVIATIONS**

UNK = UNKNOWN  
 W = WATER

ALL INFORMATION SHOWN WAS OBTAINED FROM A LOCATION SURVEY.



Checked By: \_\_\_\_\_  
 Date: \_\_\_\_\_

TBE Job No. IL09510509

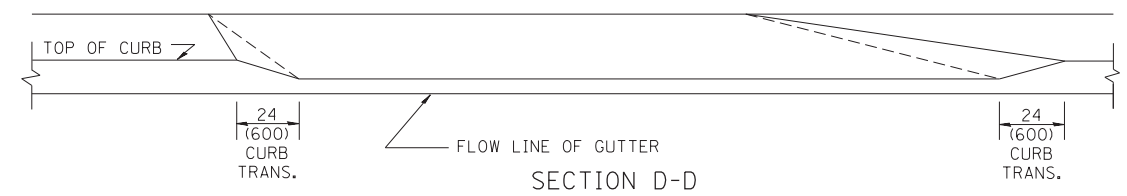
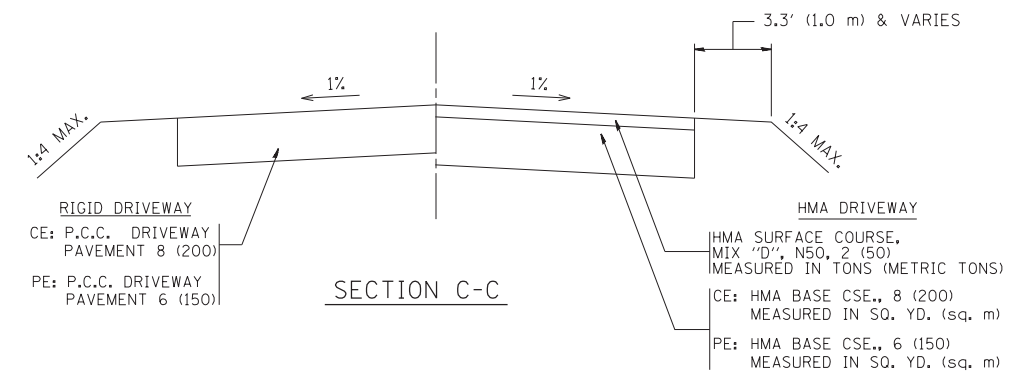
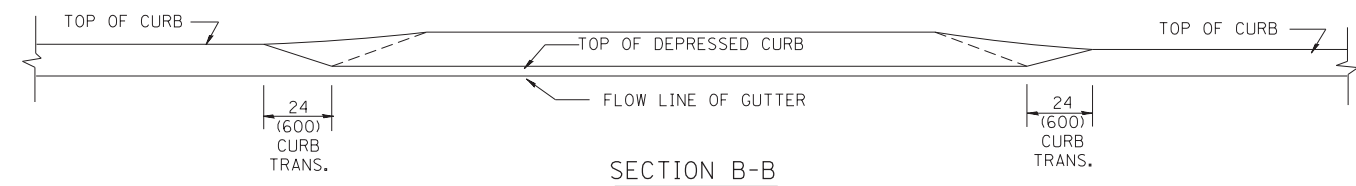
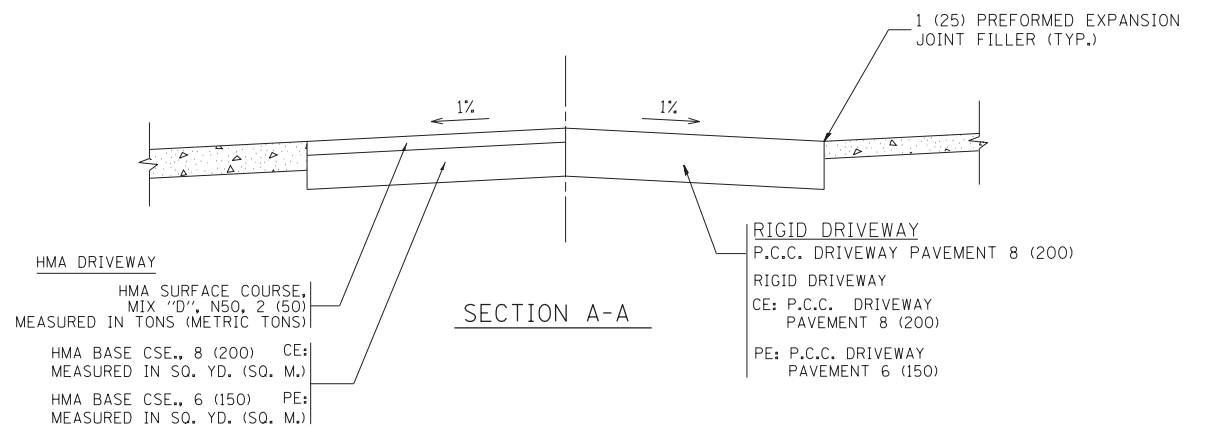
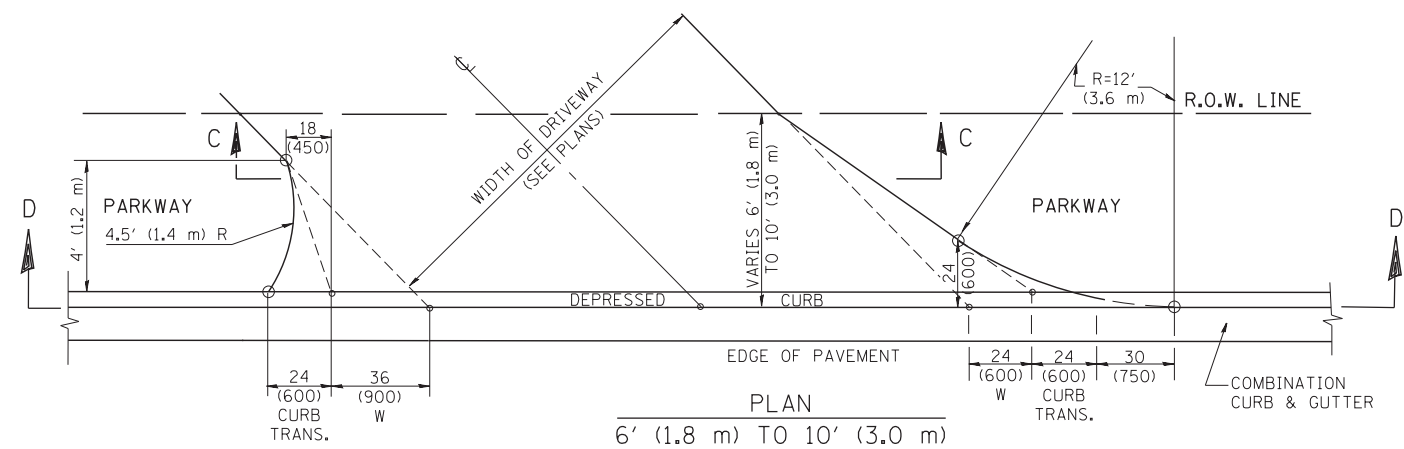
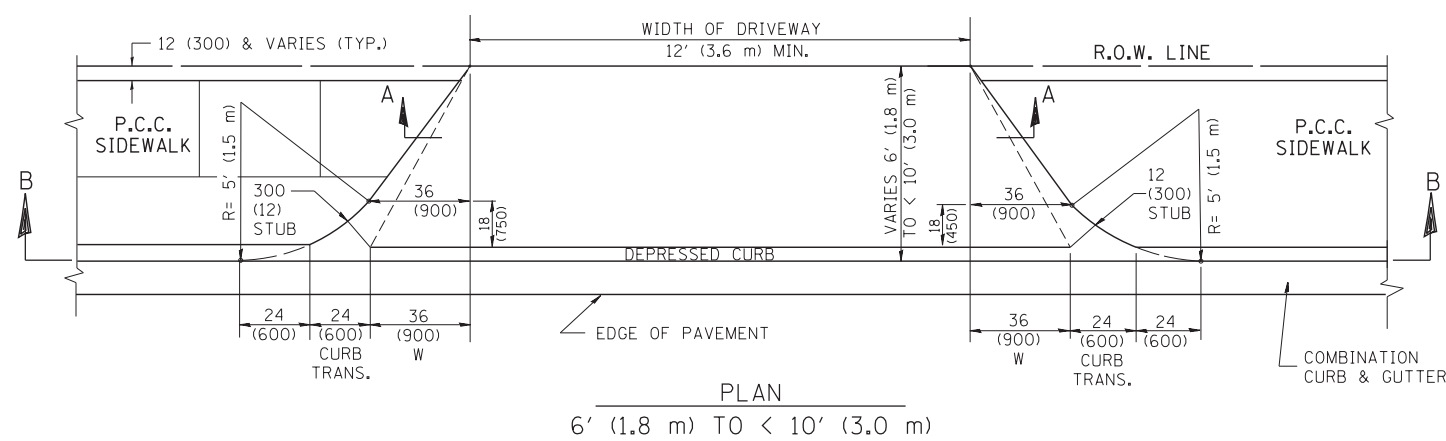
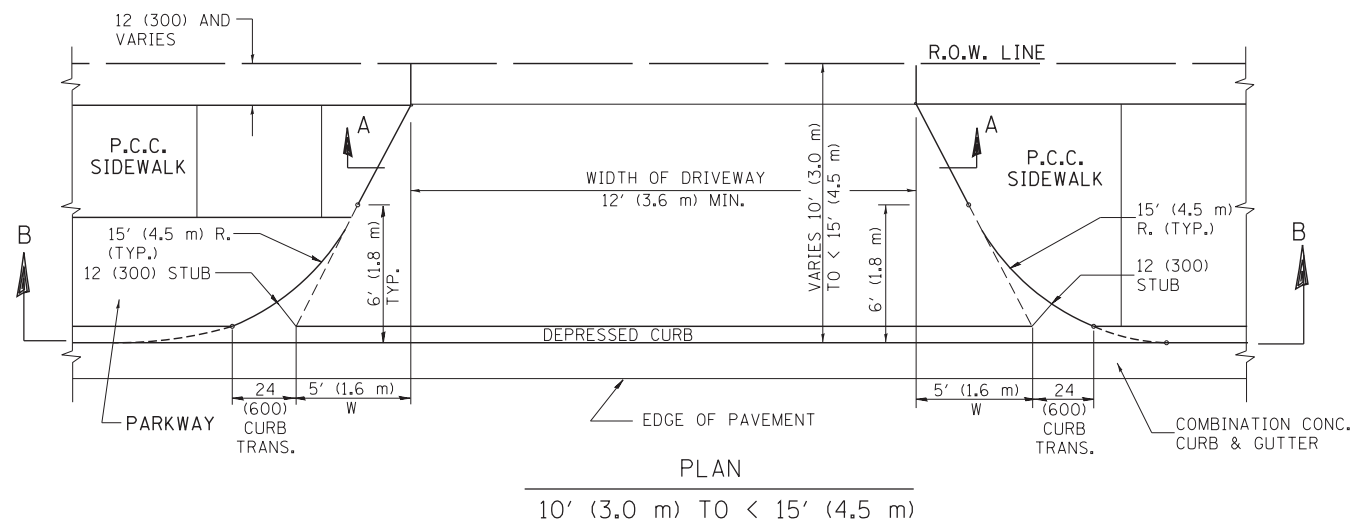
DESIGNED <i>ED</i>	REVISED	
DRAWN <i>SRK</i>	REVISED	
CHECKED <i>KFS</i>	REVISED	
DATE <i>9/28/12</i>	REVISED	

**STATE OF ILLINOIS  
 DEPARTMENT OF TRANSPORTATION**

**Ashland Ave. Broadway to Thornton Rd.  
 Blue Island, IL**

SHEET NO. \_\_\_\_\_ STA. \_\_\_\_\_ TO STA. \_\_\_\_\_

F.A.U. RTE.	SECTION	COUNTY	TOTAL SHEETS	SHEET NO.
2857	146-T 2 11-054-1	Cook	16	12
FED. ROAD DIST. NO. ILLINOIS			Contract No. 60P64 Job No.: 60R82	



GENERAL NOTES

DRIVEWAY SLOPES, LOCATIONS, & GEOMETRIC LAYOUT SHALL BE IN ACCORDANCE WITH THE LATEST EDITION OF THE "HANDBOOK FOR POLICY ON PERMITS FOR ACCESS DRIVEWAYS TO STATE HIGHWAYS". FOR FURTHER LAYOUT REQUIREMENTS, REFER TO ILLUSTRATION 10 IN THE PERMIT HANDBOOK. WHERE SIDEWALKS EXIST, DRIVEWAYS SHALL BE REPLACED WITH RIGID PAVEMENT. WHERE NO SIDEWALKS EXIST, DRIVEWAYS SHALL BE REPLACED IN KIND. SIDEWALK CROSS SLOPE THRU DRIVEWAY AREA TO BE A MAXIMUM OF 1:50.

WHEN THE DISTANCE BETWEEN R.O.W. AND THE BACK OF CURB IS EQUAL TO OR LESS THAN 8' (2.4 m), THE P.C.C. SIDEWALK SHALL EXTEND TO THE BACK OF CURB.

THE RESIDENT ENGINEER SHALL CONTACT THE TRAFFIC PERMIT OFFICE AT 847/ 705-4131 FOR ANY QUESTIONS ON DRIVEWAYS SHOWN IN THE PLANS; SPECIFICALLY IN REFERENCE TO ADDITIONAL AND/OR RELOCATION/REMOVAL OF A DRIVEWAY.

COMBINATION CONCRETE CURB & GUTTER SHALL BE MEASURED STRAIGHT ACROSS THE DRIVEWAY. NO ADDITIONAL COMPENSATION WILL BE ALLOWED FOR THE CURB & GUTTER TRANSITION.

THE 1 (25) PREFORMED EXPANSION JOINT FILLER WILL NOT BE PAID SEPARATELY, BUT SHALL BE CONSIDERED INCLUDED IN THE COST OF THE P.C.C. DRIVEWAY PAVEMENT OR P.C.C. SIDEWALK.

"W" VARIES FROM 36 (900) TO 5' (1.5 m) PROPORTIONAL TO THE LENGTH (L), FROM 6' (1.8 m) TO 10' (3 m).

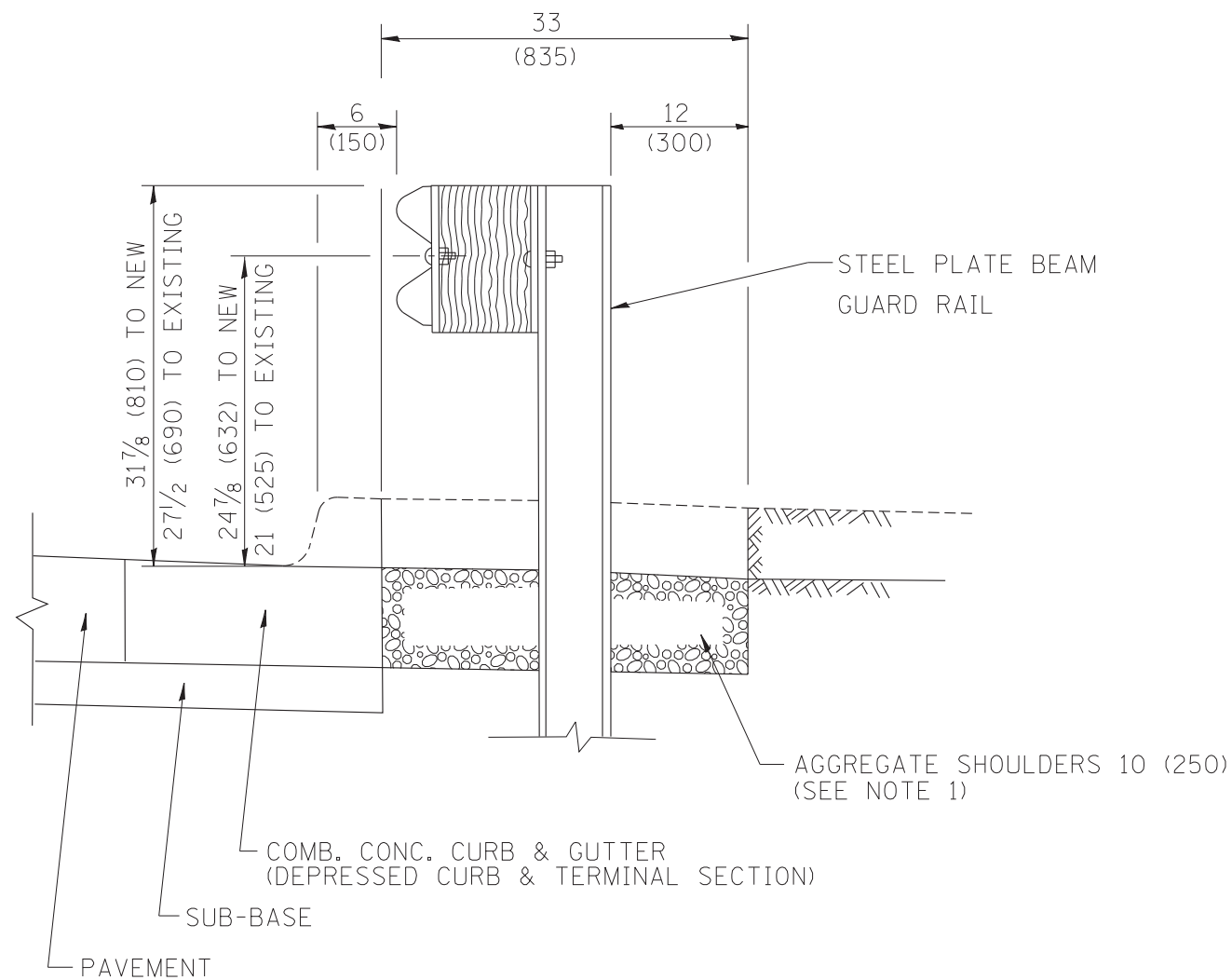
ALL DIMENSIONS ARE IN INCHES (MILLIMETERS) UNLESS OTHERWISE NOTED.

FILE NAME =	USER NAME = l1eyso	DESIGNED - R. SHAH	REVISED - M. GOMEZ 04-06-01
ct:\pw\work\p1dot\1eyso\d0108315\bd02.dgn		DRAWN -	REVISED - P. LOFLEUR 04-15-03
	PLOT SCALE = 50.0000' / in.	CHECKED -	REVISED - R. BORO 01-01-07
	PLOT DATE = 9/6/2011	DATE - 11-06-95	REVISED - R. BORO 01-01-07

STATE OF ILLINOIS  
DEPARTMENT OF TRANSPORTATION

DRIVEWAY DETAILS			
DISTANCE BETWEEN ROW AND FACE OF CURB < 15' (4.5 m)			
SCALE: NONE	SHEET NO. 1 OF 1 SHEETS	STA. TO STA.	

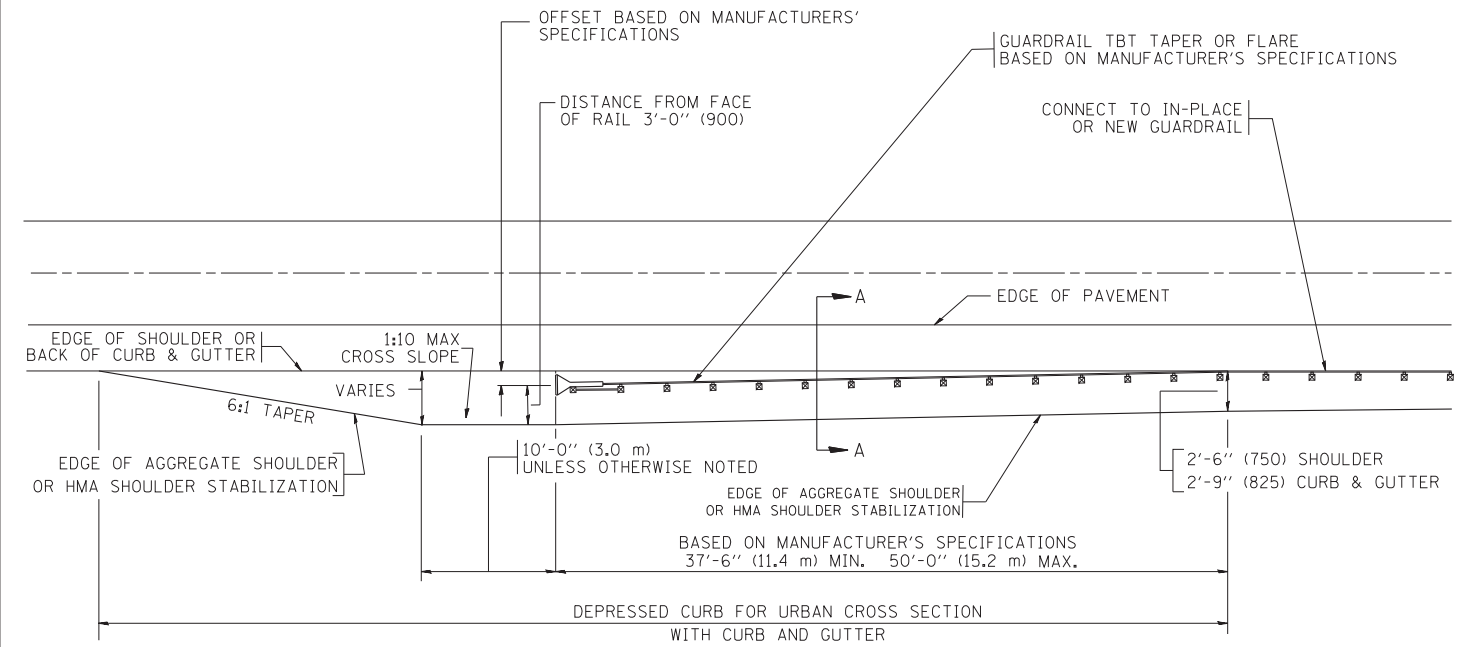
F.A.U. RTE.	SECTION	COUNTY	TOTAL SHEETS	SHEET NO.
2857	146-T	COOK	16	13
BD400-02 (BD-02)			CONTRACT NO. 60R82	
FED. ROAD DIST. NO. 1 ILLINOIS FED. AID PROJECT				



SECTION A-A

- NOTES:
1. THE AGGREGATE SHOULDER, 10" OR HMA SHOULDER, 6" (IF REQUIRED) SHALL EXTEND UNDER THE TRAFFIC BARRIER TERMINAL.
  2. "EXISTING" GUARDRAIL REFERS TO CONNECTING TERMINAL SECTION TO GUARD RAILING PRIOR TO THE MIDWEST GUARDRAIL SYSTEM.
  3. THE CONTRACTOR SHALL VERIFY THE TYPE/HEIGHT OF GUARDRAIL IN-PLACE BEFORE ORDERING THE NEW TERMINAL SECTION. COST INCLUDED WITH THE COST OF THE TERMINAL. THE TERMINAL SECTION HEIGHT TO BE PLACED MUST MATCH THE HEIGHT OF THE IN-PLACE GUARDRAIL.

DETAILS FOR STEEL PLATE BEAM  
GUARD RAIL ADJACENT TO CURB AND GUTTER  
 [FOR ROADWAY SPEED 35 MPH (60 kmh) TO 45 MPH (70 kmh)]



DEPRESSED CURB AND GUTTER AND  
SHOULDER TREATMENT AT TBT TY. 1 SPL.

BASIS OF PAYMENT: HMA SHOULDERS 6 (150) (IF REQUIRED) WILL BE PAID FOR AT THE CONTRACT UNIT PRICE PER SQUARE YARD (SQUARE METER) FOR "HOT-MIX ASPHALT SHOULDERS 6" (150 mm)".

STEEL PLATE BEAM GUARD RAIL AND TRAFFIC BARRIER TERMINAL, OF THE TYPE SPECIFIED WILL BE PAID FOR SEPARATELY.

TBT = TRAFFIC BARRIER TERMINAL  
 ALL DIMENSIONS ARE IN INCHES (MILLIMETERS) UNLESS OTHERWISE SHOWN.

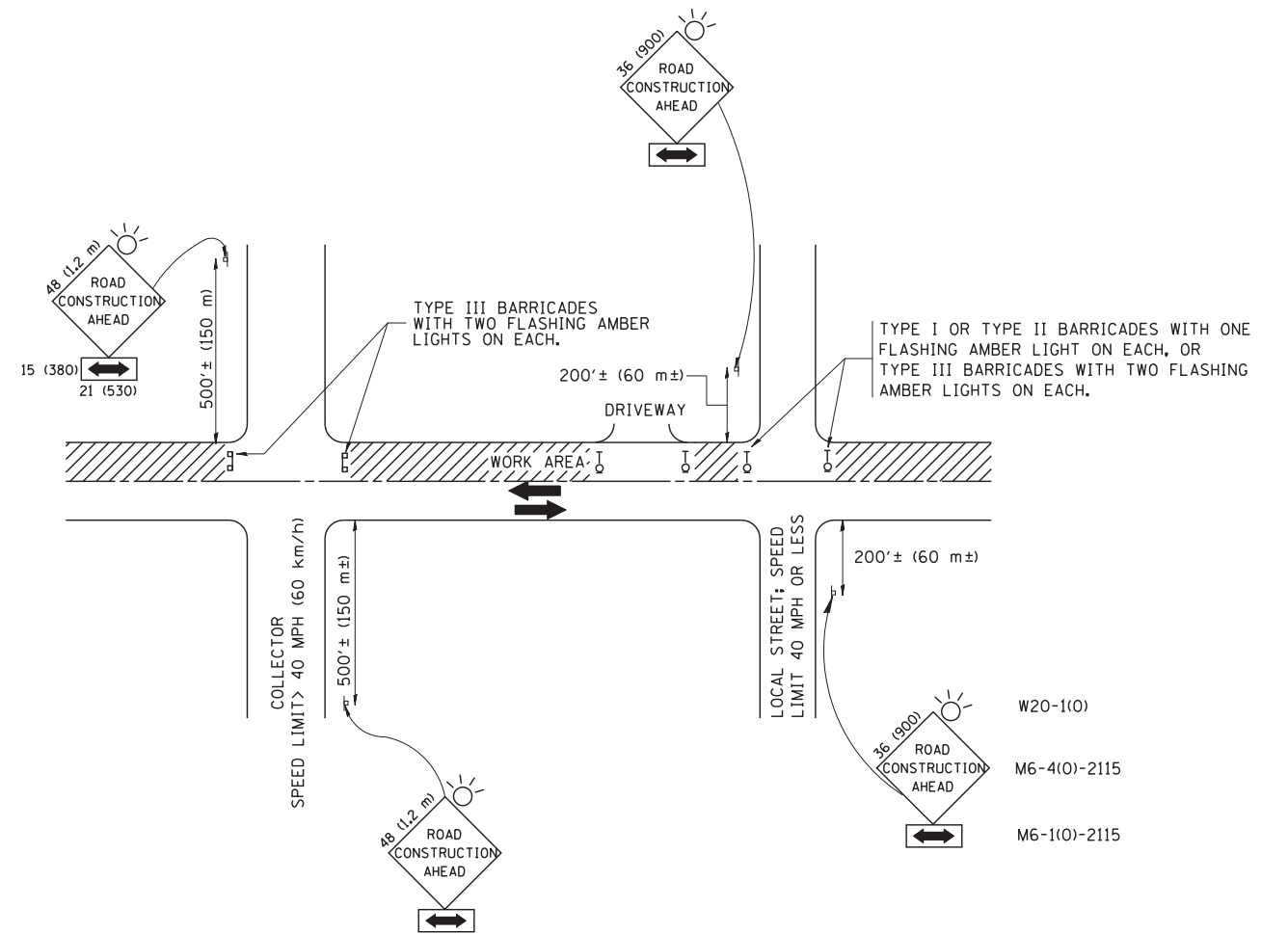
FILE NAME =	USER NAME = drivakosgn	DESIGNED - M. DE YONG	REVISED - E. GOMEZ 08-28-00
ct:\pwork\pwidot\DRIVAKOSGN\d0108315\bd34.dgn		DRAWN -	REVISED - R. BORO 01-01-07
	PLOT SCALE = 49.9999 ' / IN.	CHECKED -	REVISED - R. BORO 12-08-2008
	PLOT DATE = 9/21/2009	DATE - 09-22-90	REVISED - R. BORO 09-14-2009

STATE OF ILLINOIS  
 DEPARTMENT OF TRANSPORTATION

DETAILS FOR DEPRESSED CURB & GUTTER AND  
 SHOULDER TREATMENT AT TBT TY 1 SPL.

SCALE: NONE SHEET NO. 1 OF 1 SHEETS STA. TO STA.

F.A.U. RTE.	SECTION	COUNTY	TOTAL SHEETS	SHEET NO.
2857	146-T	COOK	16	14
BD600-10 (BD 34)			CONTRACT NO. 60R82	
FED. ROAD DIST. NO. 1 ILLINOIS FED. AID PROJECT				



TRAFFIC CONTROL AND PROTECTION FOR SIDE ROADS, INTERSECTIONS, AND DRIVEWAYS

NOTES:

- A. FOR NO LANE RESTRICTION ON THE SIDE ROAD OR DRIVEWAYS
- SIDE ROAD WITH A SPEED LIMIT OF 40 MPH (60 km/h) OR LESS AS SHOWN ON THE DRAWING AND AS DIRECTED BY THE ENGINEER:
    - ONE **ROAD CONSTRUCTION AHEAD** SIGN 36 x 36 (900x900) WITH A FLASHER AND FLAG MOUNTED ON IT APPROXIMATELY 200' (60 m) IN ADVANCE OF THE MAIN ROUTE.
    - THE CLOSED PORTION OF THE MAIN ROUTE SHALL BE PROTECTED BY BLOCKING WITH TYPE I, TYPE II OR TYPE III BARRICADES, 1/3 OF THE CROSS SECTION OF THE CLOSED PORTION.
  - SIDE ROAD WITH A SPEED LIMIT GREATER THAN 40 MPH (60 km/h) AS SHOWN ON THE DRAWING AND AS DIRECTED BY THE ENGINEER:
    - ONE **ROAD CONSTRUCTION AHEAD** SIGN 48 x 48 (1.2 m x 1.2 m) WITH A FLASHER MOUNTED ON IT APPROXIMATELY 500' (150 m) IN ADVANCE OF THE MAIN ROUTE.
    - THE CLOSED PORTION OF THE MAIN ROUTE SHALL BE PROTECTED BY BLOCKING WITH TYPE III BARRICADES, 1/2 OF THE CROSS SECTION OF THE CLOSED PORTION.
3. WHEN THE SIDE ROAD LIES BETWEEN THE BEGINNING OF THE MAINLINE SIGNING AND THE WORK ZONE, A SINGLE HEADED ARROW (M6-1) SHALL BE USED IN LIEU OF THE DOUBLE HEADED ARROW (M6-4).
- B. FOR A LANE CLOSURE ON A SIDE ROAD OR DRIVEWAY:
- USE APPLICABLE PORTIONS OF THE TYPICAL APPLICATION OF TRAFFIC CONTROL DEVICES (STD. 701501, STD. 701606 OR THE APPROPRIATE STANDARD). THE SPACING OF SIGNS AND BARRICADES SHALL BE ADJUSTED FOR FIELD CONDITIONS AS DIRECTED BY THE ENGINEER. THE DIRECTIONAL ARROW SHALL BE COVERED OR REMOVED WHEN NO LONGER CONSISTENT WITH THE SIDE ROAD LANE CLOSURE.
- C. ADVANCE WARNING SIGNS ARE TO BE OMITTED ON DRIVEWAY UNLESS OTHERWISE NOTED.
- D. THE TRAFFIC CONTROL AND PROTECTION FOR SIDE ROADS, INTERSECTIONS, AND DRIVEWAYS SHALL BE INCIDENTAL TO THE COST OF SPECIFIED TRAFFIC CONTROL STANDARDS OR ITEMS.

All dimensions are in millimeters (inches) unless otherwise shown.

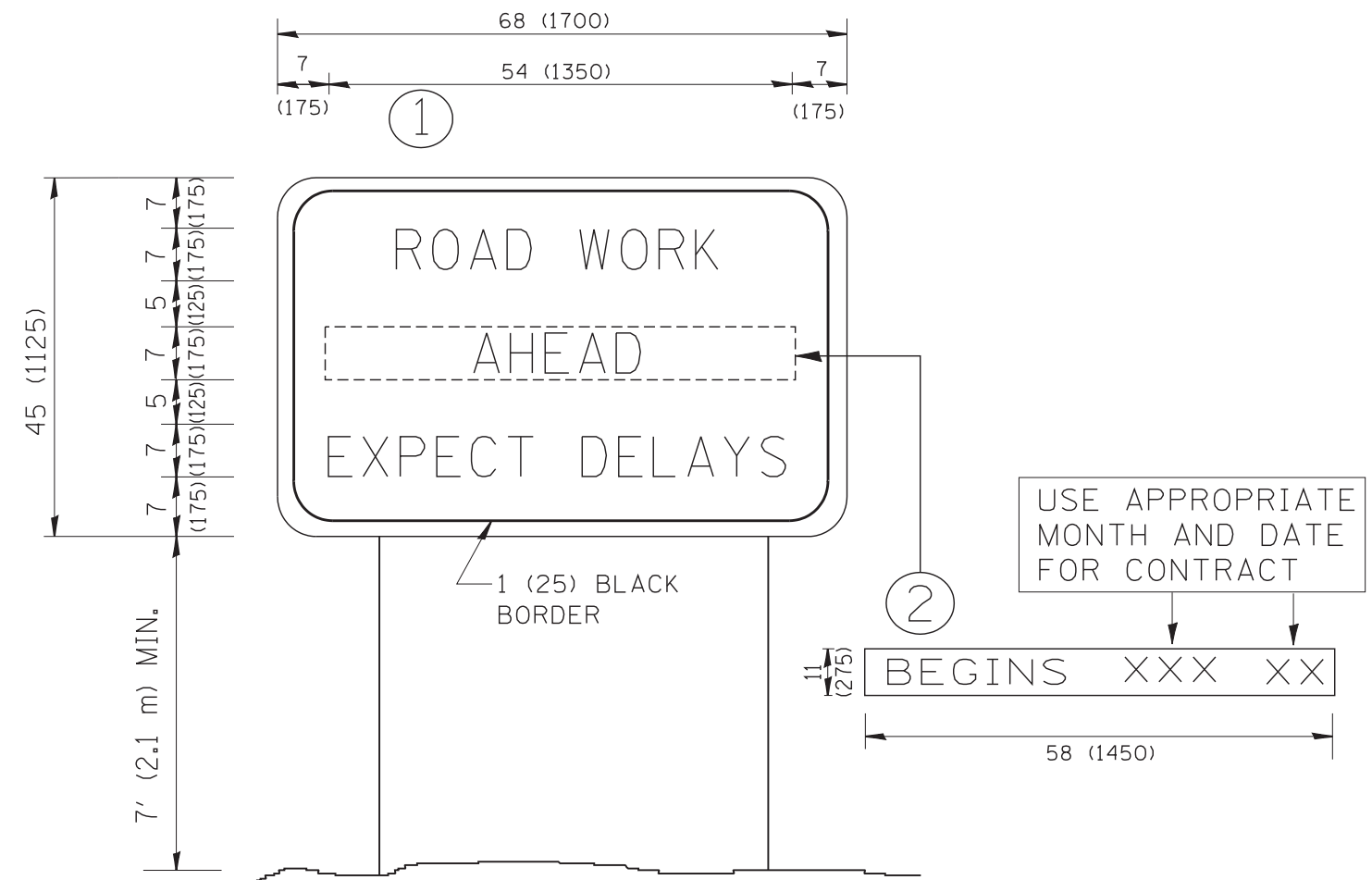
FILE NAME = W:\diststd\22x34\tc10.dgn	USER NAME = gegl10nbt	DESIGNED - LHA	REVISED - J. OBERLE 10-18-95
		DRAWN -	REVISED - A. HOUSEH 03-06-96
	PLOT SCALE = 50.000' / IN.	CHECKED -	REVISED - A. HOUSEH 10-15-96
	PLOT DATE = 1/4/2008	DATE - 06-89	REVISED - T. RAMMACH 01-06-00

STATE OF ILLINOIS  
DEPARTMENT OF TRANSPORTATION

TRAFFIC CONTROL AND PROTECTION FOR  
SIDE ROADS, INTERSECTIONS, AND DRIVEWAYS

SCALE: NONE SHEET NO. 1 OF 1 SHEETS STA. TO STA.

F.A.U. RTE.	SECTION	COUNTY	TOTAL SHEETS	SHEET NO.
2857	146-T	COOK	16	15
<b>TC-10</b>			CONTRACT NO. 60R82	
FED. ROAD DIST. NO. 1 ILLINOIS FED. AID PROJECT				



**NOTES:**

1. USE BLACK LETTERING ON ORANGE BACKGROUND.
2. ERECT SIGNS IN ADVANCE OF THE LOCATION FOR THE "ROAD CONSTRUCTION AHEAD" SIGN AT LOCATIONS AS DIRECTED BY THE ENGINEER.
3. ERECT SIGN ① WITH INSTALLED PANEL ② ONE WEEK PRIOR TO THE START OF CONSTRUCTION.
4. REMOVE PANEL ② SOON AFTER THE START OF CONSTRUCTION.
5. SEE SPECIAL PROVISION FOR "TEMPORARY INFORMATION SIGNING" FOR ADDITIONAL INFORMATION.
6. ONE SIGN ASSEMBLY EQUALS 25.70 SQ. FT. (2.3 SQ. M.)
7. SHALL BE PAID FOR AS TEMPORARY INFORMATION SIGNING.

ALL DIMENSIONS ARE IN INCHES (MILLIMETERS) UNLESS OTHERWISE SHOWN.

FILE NAME = W:\diststd\22x34\tc22.dgn	USER NAME = gaglianobt	DESIGNED - DRAWN -	REVISED - REVISED -
		DESIGNED - CHECKED -	REVISED - REVISED -
		DESIGNED - DATE -	REVISED - REVISED -

**STATE OF ILLINOIS  
DEPARTMENT OF TRANSPORTATION**

**ARTERIAL ROAD  
INFORMATION SIGN**

SCALE: NONE SHEET NO. 1 OF 1 SHEETS STA. TO STA.

F.A.J. RTE.	SECTION	COUNTY	TOTAL SHEETS	SHEET NO.
2857	146-T	COOK	16	16
TC-22			CONTRACT NO. 60R82	
FED. ROAD DIST. NO. 1 ILLINOIS FED. AID PROJECT				