

STATE OF ILLINOIS  
DEPARTMENT OF TRANSPORTATION  
DIVISION OF HIGHWAYS

**PROPOSED  
HIGHWAY PLANS**

IL 56 (BUTTERFIELD ROAD)/FAP 365  
AT I-355 (NB & SB RAMPS)  
SECTION (56R-2) TS  
PROJECT: *HSIP-0365(015)*  
TRAFFIC SIGNAL MODERNIZATION  
DuPAGE COUNTY  
JOB NO.: C-91-429-12

F.A.P. RTE.	SECTION	COUNTY	TOTAL SHEETS	SHEET NO.
365	156R-27 TS	DUPAGE	33	1
		ILLINOIS	CONTRACT NO. 60T98	

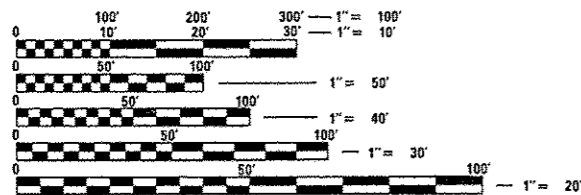
FOR INDEX OF SHEETS, SEE SHEET NO. 2

**DESIGN DESIGNATION**

IL 56 (BUTTERFIELD ROAD) - OTHER PRINCIPAL ARTERIAL  
ADT = 33,700 - 50,800  
POSTED SPEED LIMIT = 45 MPH

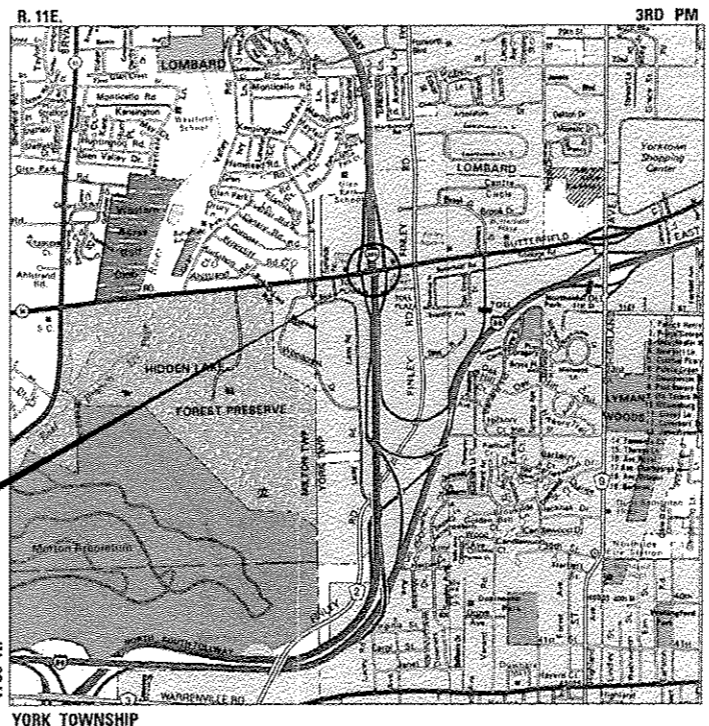
I-355 - INTERSTATE  
ADT = 81,200 - 121,500  
POSTED SPEED LIMIT = 55 MPH

PROJECT IS LOCATED IN THE  
VILLAGE OF DOWNERS GROVE



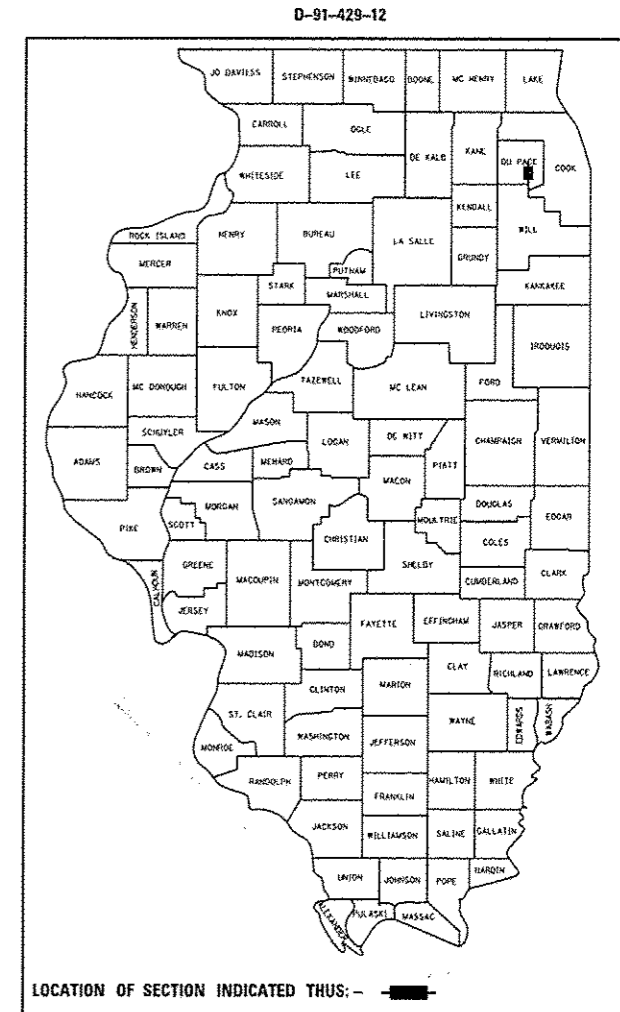
FULL SIZE PLANS HAVE BEEN PREPARED USING STANDARD ENGINEERING SCALES. REDUCED SIZED PLANS WILL NOT CONFORM TO STANDARD SCALES. IN MAKING MEASUREMENTS ON REDUCED PLANS, THE ABOVE SCALES MAY BE USED.

J.U.L.I.E.  
JOINT UTILITY LOCATION INFORMATION FOR EXCAVATION  
1-800-892-0123 OR 811



IL 56 AT I-355  
(NB & SB RAMPS)

LOCATION MAP  
(Not to Scale)



LOCATION OF SECTION INDICATED THUS: - [black rectangle] -

SIGNED: *Kevin L. Belgrave*  
KEVIN L. BELGRAVE, EXP. 11/30/2013  
DATE: *May 8, 2013*



STATE OF ILLINOIS  
DEPARTMENT OF TRANSPORTATION  
DIVISION OF HIGHWAYS

SUBMITTED *May 10* 20 *13*  
*John Johnson*  
DEPUTY DIRECTOR OF HIGHWAYS, REGION ENGINEER

*June 28* 20 *13*  
*John D. Baranzelli PE, Inc.*  
ENGINEER OF DESIGN AND ENVIRONMENT

*June 28* 20 *13*  
*Omer Osman PE, Inc.*  
DIRECTOR OF HIGHWAYS, CHIEF ENGINEER

PRINTED BY THE AUTHORITY  
OF THE STATE OF ILLINOIS

**GHA** GEWALT HAMILTON  
ASSOCIATES, INC.  
850 Forest Edge Drive - Vernon Hills, IL 60061  
Consulting Engineers & Surveyors  
847-478-9760  
FAX: 847-478-9701

CONTRACT NO. 60T98

DISTRICT 1 - TRAFFIC SIGNAL DESIGN - SUDDUD MAHMOUD (847) 705-4420