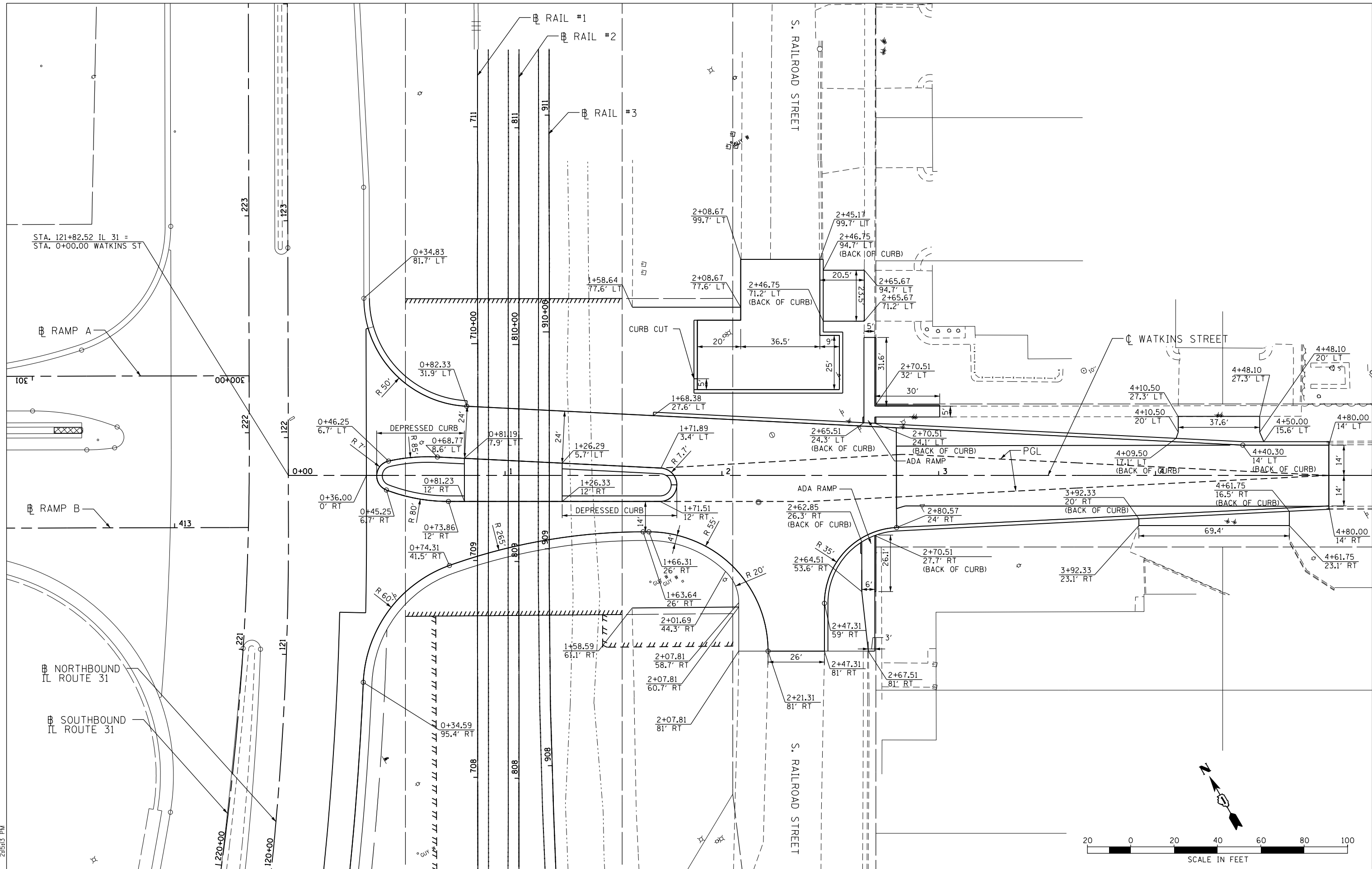


F:\projects\2010\3003\cadd\site\vdgn\01\0160V53-srt+plandetail-01.dgn  
 5/16/2013 2:55:13 PM



USER NAME = 1654	DESIGNED - JWB	REVISED -
	DRAWN - JWB	REVISED -
PLOT SCALE = 48.0000' / in.	CHECKED - RS	REVISED -
PLOT DATE = 5/16/2013	DATE - 05/17/2013	REVISED -

**STATE OF ILLINOIS**  
**DEPARTMENT OF TRANSPORTATION**

<b>WATKINS STREET AT IL ROUTE 31</b> <b>ROADWAY PLAN DETAILS - WATKINS STREET</b>	
SCALE: 1"=20'	SHEET ROADDETAIL-1 OF 1
STA. 0+00	TO STA. 4+80

F.A.U. R.T.E.	SECTION	COUNTY	TOTAL SHEETS	SHEET NO.
3902	12R-N	KANE	92	28
CONTRACT NO. 60V53				
ILLINOIS FED. AID PROJECT				