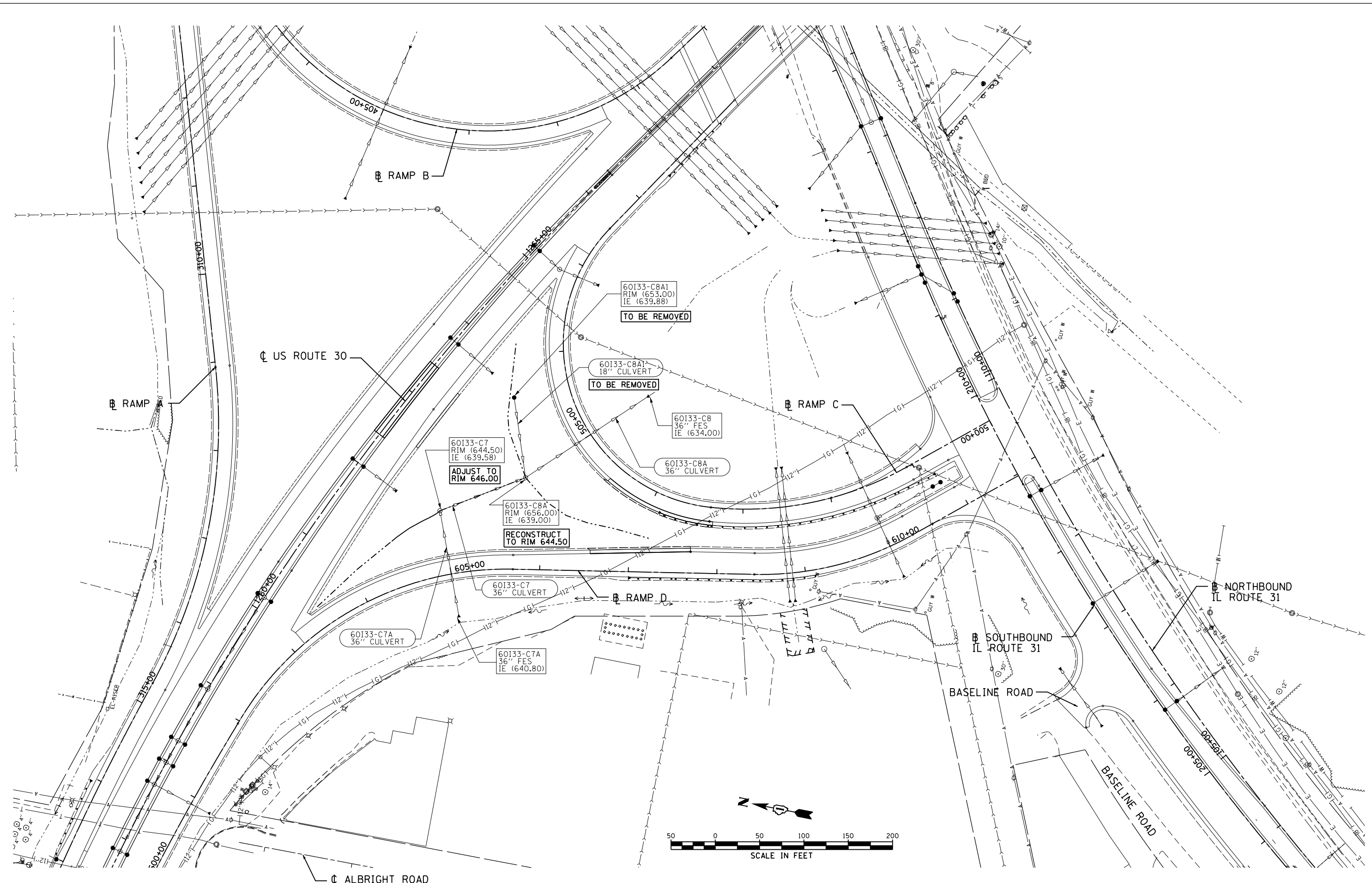


P:\11052010\20100303\cadd\site\vgd\01\Di60V53-sht+dr-dim-03.dgn
 5/16/2013 2:52:23 PM



USER NAME = 1654	DESIGNED - JWb	REVISED -
	DRAWN - JWb	REVISED -
PLOT SCALE = 100.0000' / in.	CHECKED - RS	REVISED -
PLOT DATE = 5/16/2013	DATE - 05/17/2013	REVISED -

STATE OF ILLINOIS
DEPARTMENT OF TRANSPORTATION

WATKINS STREET AT IL ROUTE 31
DRAINAGE AND UTILITY PLAN - RAMP C AND RAMP D
 SCALE: 1"=50' SHEET DRAIN-3 OF 3

F.A.U. RTE.	SECTION	COUNTY	TOTAL SHEETS	SHEET NO.
3902	12R-N	KANE	92	38
CONTRACT NO. 60V53				
ILLINOIS FED. AID PROJECT				

(RAMP C) STA. 500+00 TO STA. 507+52
 (RAMP D) STA. 600+00 TO STA. 609+96