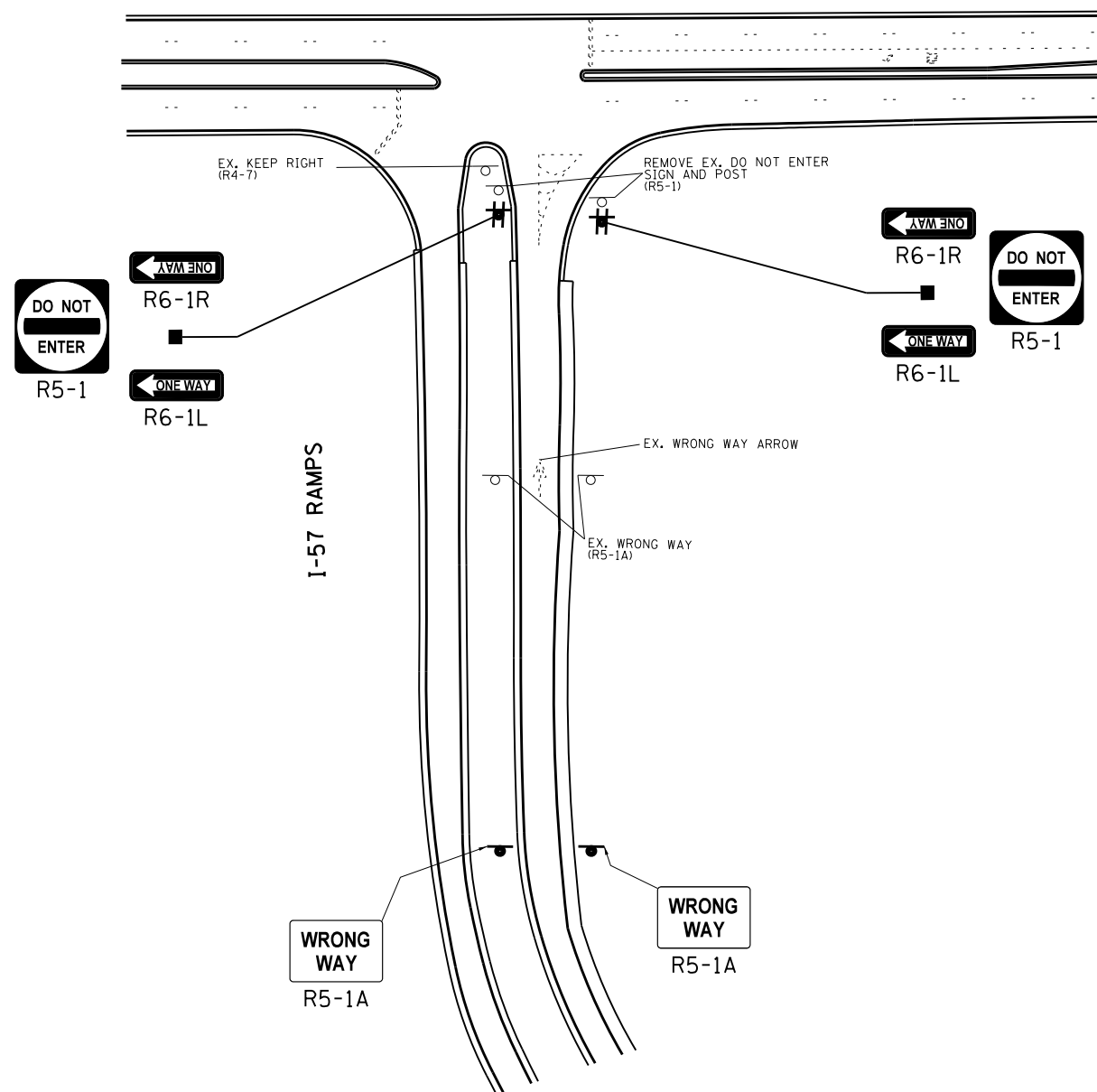




SAUK TRAIL



NOTE:
SIGN ASSEMBLIES GREATER THAN 16 SQUARE FEET
REQUIRE TWO TELESCOPING STEEL SIGN SUPPORTS.

COOK COUNTY (SOUTH) LOCATION NO. 4

| | | | | | | | | | | | | |
|---|-------------------------------|------------|-----------|---|---|--|--|--------------------|-----------|---------------------------|--------------|-----------|
| FILE NAME = | USER NAME = SMITHCJ | DESIGNED - | REVISED - | STATE OF ILLINOIS DEPARTMENT OF TRANSPORTATION | SOUTHBOUND I-57 TO SAUK TRAIL SIGNAGE PLAN | | | F.A. RTE. | SECTION | COUNTY | TOTAL SHEETS | SHEET NO. |
| et:\pw\work\p\dot\smi\thc\j\d0340446\Design\sh-t-RampSignage-CookCo.dgn | PLOT SCALE = 100.0000' / 1in. | DRAWN - | REVISED - | | | | | 2013-025-SG | COOK/WILL | 57 | 13 | |
| Default | PLOT DATE = 5/24/2013 | CHECKED - | REVISED - | | SCALE: SHEET OF SHEETS STA. TO STA. | | | CONTRACT NO. 60W51 | | ILLINOIS FED. AID PROJECT | | |
| | | DATE - | REVISED - | | | | | | | | | |