

F.A. RTE.	SECTION	COUNTY	TOTAL SHEETS	SHEET NO.
VAR.	2013-028 RS	MCH. & LAKE	26	1
		ILLINOIS	CONTRACT NO. 60W64	

STATE OF ILLINOIS
DEPARTMENT OF TRANSPORTATION
DIVISION OF HIGHWAYS

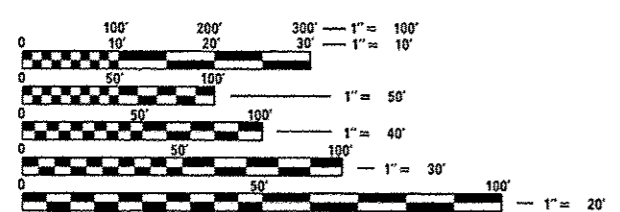
**PROPOSED
HIGHWAY PLANS**

FOR INDEX OF SHEETS, SEE SHEET NO. 2

THIS PROJECT IS LOCATED IN:
THE VILLAGE OF ISLAND LAKE
THE VILLAGE OF WAUCONDA
THE CITY OF CRYSTAL LAKE
THE CITY OF MARENGO
THE CITY OF WOODSTOCK

VARIOUS ROUTES
SECTION: 2013-028 RS
VARIOUS LOCATIONS IN MCHENRY AND WESTERN LAKE COUNTIES
INTERMITTENT RESURFACING
MCHENRY & LAKE COUNTIES
C-91-348-13

FOR GENERAL LOCATION MAP, SEE SHEET NO. 4



FULL SIZE PLANS HAVE BEEN PREPARED USING STANDARD ENGINEERING SCALES. REDUCED SIZED PLANS WILL NOT CONFORM TO STANDARD SCALES. IN MAKING MEASUREMENTS ON REDUCED PLANS, THE ABOVE SCALES MAY BE USED.

J.U.L.I.E.
JOINT UTILITY LOCATION INFORMATION FOR EXCAVATION
1-800-892-0123
OR 811

PROJECT ENGINEER: DANIEL WILGREEN (847) 705-4240
PROJECT MANAGER: KEN ENG (847) 705-4247

CONTRACT NO. 60W64

STATE OF ILLINOIS
DEPARTMENT OF TRANSPORTATION
DIVISION OF HIGHWAYS

SUBMITTED 5/20 2013

John P. Baranzelli
DEPUTY DIRECTOR OF HIGHWAYS, REGION ENGINEER

June 28 2013
John P. Baranzelli P.E.
ENGINEER OF DESIGN AND ENVIRONMENT

June 28 2013
Omer Osman P.E.
DIRECTOR OF HIGHWAYS, CHIEF ENGINEER

PRINTED BY THE AUTHORITY
OF THE STATE OF ILLINOIS