

FOR INDEX OF HIGHWAY STANDARDS, SEE SHEET 2

PROJECT LOCATED IN THE VILLAGE OF DOWNERS GROVE

STATE OF ILLINOIS 08-02-13 LETTING ITEM 038

DEPARTMENT OF TRANSPORTATION
DIVISION OF HIGHWAYS

PLANS FOR PROPOSED FEDERAL AID HIGHWAY

SEELEY AVENUE AT GRANT AVENUE
BLODGETT AVENUE AT RANDALL STREET
BELL AIRE SCHOOL, VENARD ROAD TO SCHOOL LIMITS
EL SIERRA SCHOOL, 68TH STREET TO SCHOOL LIMITS
MEDIAN RECONSTRUCTION, SIDEWALK RECONSTRUCTION, NEW SIDEWALK
SECTION No.: 12-00104-00-SW
PROJECT No.: SRTS-4009(164)
VILLAGE OF DOWNERS GROVE
DUPAGE COUNTY
C-91-445-12

Table with columns: F.A.A. REC., SECTION, COUNTY, TOTAL SHEETS, SHEET NO. Values: 12-00104-00-SW, DU PAGE, 11, 1

CONTRACT NO. 63840

INDEX OF SHEETS table with columns: SHEET NO., DESCRIPTION. Lists sheets 1-11 and their descriptions.

TRAFFIC DATA

DESIGN DESIGNATION - LOCAL
ALL LOCAL

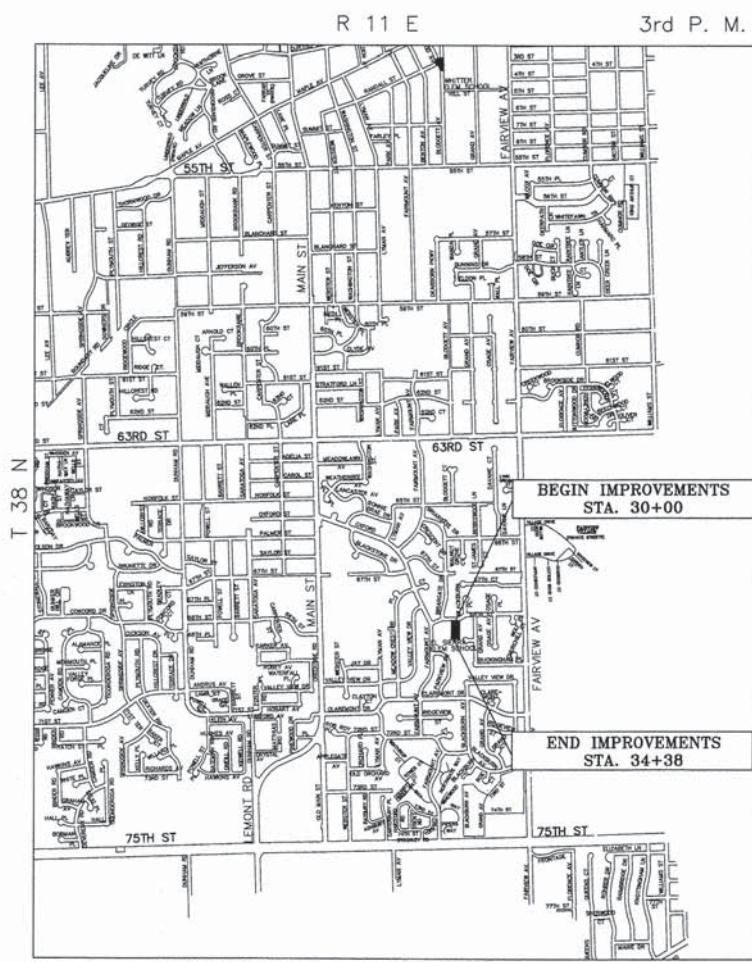
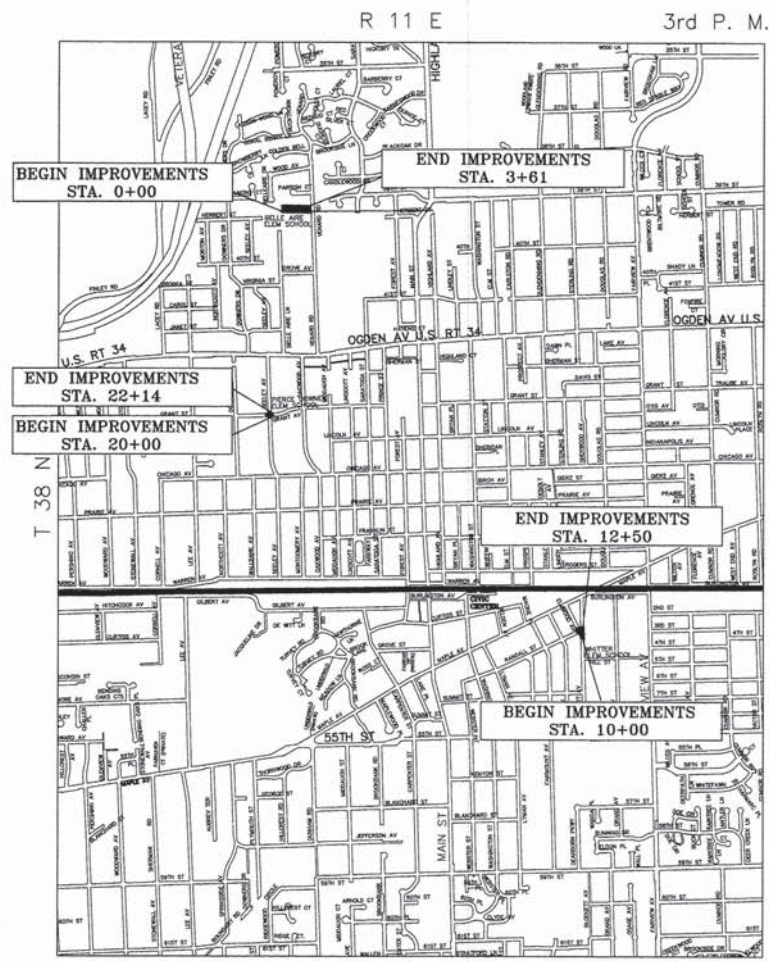
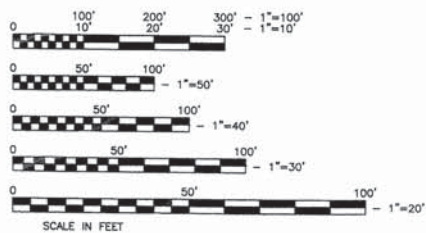
BLODGETT AVENUE
POSTED SPEED LIMIT: 25 MPH
ADT: 1444

ELMWOOD AVENUE AVENUE
POSTED SPEED LIMIT: 25 MPH
ADT: 505

SEELEY AVENUE
POSTED SPEED LIMIT: 25 MPH
ADT: 1185

GRANT STREET
POSTED SPEED LIMIT: 25 MPH
ADT: 671

RANDALL STREET
POSTED SPEED LIMIT: 25 MPH
ADT: 330



LOCATION MAP (NOT TO SCALE)

STATE OF ILLINOIS DEPARTMENT OF TRANSPORTATION DIVISION OF HIGHWAYS
APPROVED May 22 2013
DIRECTOR OF PUBLIC WORKS, VILLAGE OF DOWNERS GROVE
PASSED MAY 22 2013
DIVISION ENGINEER OF LOCAL ROADS AND STREETS
RELEASING FOR BID BASED ON LIMITED REVIEW May 30 2013
DEPUTY DIRECTOR OF HIGHWAYS, REGION ONE ENGINEER



Tomasz J. Topor, P.E. #062-060938 My License Expires 11/30/13

FULL SIZE PLANS HAVE BEEN PREPARED USING STANDARD ENGINEERING SCALES. REDUCED SIZE PLANS WILL NOT CONFORM TO STANDARD SCALES. IN MAKING MEASUREMENTS ON REDUCED PLANS, THE ABOVE SCALES CAN BE USED

Contract No. 63840

SCALE: 1" = 10 FEET

GROSS LENGTH = 1135 FEET (0.21 MILES)
NET LENGTH = 1080 FEET (0.20 MILES)

PRINTED BY THE AUTHORITY OF THE STATE OF ILLINOIS

PROGRAM AND OFFICE ENGINEER: CHARLES F. RIDGLE, P. E. 847-705-4406 SCHAMBOURG, IL

1. ALL REFERENCES TO THE 'VILLAGE' IN THESE GENERAL NOTES SHALL BE INTERPRETED TO MEAN THE VILLAGE OF DOWNERS GROVE.

2. ALL REFERENCES TO THE 'STANDARD SPECIFICATIONS' IN THESE GENERAL NOTES SHALL BE INTERPRETED TO MEAN THE 'STANDARD SPECIFICATIONS FOR ROAD AND BRIDGE CONSTRUCTION' ADOPTED BY THE ILLINOIS DEPARTMENT OF TRANSPORTATION (IDOT) ON JANUARY 1, 2012.

3. THE LOCATIONS OF PUBLIC OR PRIVATE UTILITIES SHOWN ON THE PLANS ARE APPROXIMATE AND THE VILLAGE, DEPARTMENT, AND THE ENGINEERS DO NOT GUARANTEE THEIR ACCURACY. THE CONTRACTOR WILL BE REQUIRED TO ASCERTAIN THE EXACT LOCATION OF SUCH UTILITIES AND EXERCISE CARE DURING THE CONSTRUCTION OPERATION SO AS NOT TO DAMAGE THEM. IN ACCORDANCE WITH THE SPECIAL PROVISIONS AND ARTICLE 107.20 OF THE 'STANDARD SPECIFICATIONS' THE CONTRACTOR SHALL BE RESPONSIBLE FOR CONTACTING THE OWNERS OF ALL EXISTING UTILITIES SO THAT THEIR FACILITIES MAY BE LOCATED AND ADJUSTED OR MOVED, IF NECESSARY, PRIOR TO THE START OF CONSTRUCTION OPERATIONS.

4. THOSE EXISTING TRAFFIC SIGNS WHICH ARE SO DESIGNATED BY THE ENGINEER SHALL BE REMOVED, STORED AND SUBSEQUENTLY RELOCATED BY THE CONTRACTOR AT NO ADDITIONAL COST. ANY SIGNS WHICH ARE DAMAGED BY THE CONTRACTOR AS DETERMINED BY THE ENGINEER SHALL BE REPLACED IN KIND BY THE CONTRACTOR AND TO THE SATISFACTION OF THE ENGINEER AT NO ADDITIONAL COST.

5. ALL TRAFFIC CONTROL AND OTHER ADVISORY SIGNS NEEDED FOR CONSTRUCTION ARE TO BE FURNISHED BY THE CONTRACTOR IN ACCORDANCE WITH THE PLANS AND IDOT STANDARDS FOR TRAFFIC CONTROL AND PROTECTION.

6. SAW CUTTING OF PAVEMENTS, SIDEWALK, ETC. SHALL BE FULL DEPTH AND SHALL RESULT IN A CLEAN STRAIGHT EDGE ON THE PORTION REMAINING. ALL SAW CUTTING SHALL BE CONSIDERED INCLUDED IN THE COST OF THE ITEM REMOVED.

7. DEBRIS REMOVAL - MATERIALS RESULTING FROM THE VARIOUS CONSTRUCTION OPERATIONS SHALL BE REMOVED AT THE END OF EACH WORK DAY TO AN APPROVED SITE. IN THE JUDGEMENT OF THE ENGINEER, SHOULD IT BE NECESSARY TO REMOVE SUCH MATERIALS, THE ENGINEER WILL REMOVE MATERIALS AND THE CONTRACTOR SHALL BE BILLED ACCORDINGLY.

8. THE CONTRACTOR SHALL BE RESPONSIBLE FOR THE PROTECTION OF ALL UNDERGROUND OR SURFACE UTILITIES EVEN THOUGH THEY MAY NOT BE SHOWN ON THE PLANS. ANY UTILITY THAT IS DAMAGED DURING CONSTRUCTION SHALL BE REPAIRED OR REPLACED TO THE SATISFACTION OF THE ENGINEER. THE WORK SHALL BE AT THE CONTRACTOR'S EXPENSE.

9. WHENEVER, DURING CONSTRUCTION OPERATIONS, ANY LOOSE MATERIAL IS DEPOSITED IN THE FLOW LINE OF DRAINAGE STRUCTURES SUCH THAT THE NATURAL FLOW OF WATER IS OBSTRUCTED, IT SHALL BE REMOVED AT THE CLOSE OF EACH WORKING DAY. AT THE CONCLUSION OF CONSTRUCTION OPERATIONS, ALL UTILITY STRUCTURES SHALL BE FREE OF DIRT AND DEBRIS. THE WORK SPECIFIED ABOVE WILL NOT BE PAID FOR SEPARATELY BUT SHALL BE INCIDENTAL TO THE CONTRACT.

10. THE CONTRACTOR SHALL NOT OPEN OR SHUT ANY WATER VALVES OR FIRE HYDRANTS WITHOUT PRIOR AUTHORIZATION FROM THE VILLAGE WATER DEPARTMENT.

11. QUANTITIES FOR PATCHING SHALL NOT EXCEED THOSE PROVIDED IN THE SUMMARY OF QUANTITIES UNLESS APPROVED BY THE ENGINEER. THE ENGINEER WILL VERIFY FINAL PATCH LOCATIONS IN THE FIELD PRIOR TO REMOVAL.

12. HOT-MIX ASPHALT SURFACE REMOVAL BUTT JOINTS WILL BE INSTALLED AT THE ENDS OF ALL RESURFACING (WHERE RESURFACING MEETS EXISTING PAVEMENT), IN ACCORDANCE WITH THE BUTT JOINT AND HOT-MIX ASPHALT TAPER DETAILS SHEET INCLUDED IN THE PLANS, UNLESS OTHERWISE SPECIFIED.

13. THE THICKNESS OF THE HOT-MIX ASPHALT MIXTURES SHOWN IN THE PLANS ARE NORMAL. DEVIATIONS MAY OCCUR DUE TO IRREGULARITIES IN THE SURFACES OR BASE ON WHICH THEY ARE PLACED. PLAN THICKNESS SHOULD BE CONSIDERED THE MINIMUM THICKNESS PERMITTED.

14. MAILBOXES WHICH ARE IN CONFLICT WITH PROPOSED IMPROVEMENTS SHALL BE REMOVED, TEMPORARILY RELOCATED, AND REPLACED UPON COMPLETION OF THE PROPOSED IMPROVEMENTS IN ACCORDANCE WITH ARTICLE 107.20 AND AS DIRECTED BY THE ENGINEER.

15. THE CONTRACTOR SHALL NOT PLACE SOD UNTIL THE TEMPERATURE IS 80 DEGREES OR LESS AND THE FORECAST FOR THE NEXT 7 DAYS SHOWS TEMPERATURES OF 80 DEGREES OR LESS. IF ALL OTHER PAY ITEMS ARE COMPLETED THE CONTRACTOR WILL NOT BE CHARGED WORKING DAYS FOR DELAYS IN PARKWAY RESTORATION DUE TO TEMPERATURE.

16. SPECIAL ATTENTION IS CALLED TO ARTICLE 107.30 OF THE STANDARD SPECIFICATIONS. THE CONTRACTOR SHALL BE RESPONSIBLE FOR THE DEFAACEMENT OF ANY CONCRETE POURS BEFORE THEY HAVE SET UP. CONCRETE SIDEWALK, DRIVEWAY, CURB, AND CURB AND GUTTER THAT HAVE BEEN DEFAENCED, IN THE OPINION OF THE ENGINEER, SHALL BE REMOVED AND REPLACED BY THE CONTRACTOR AT HIS EXPENSE. THIS SHALL BE CONSIDERED INCIDENTAL TO THE CONTRACT.

17. FOR WORK OUTSIDE LIMITS OF BRIDGE APPROACH PAVEMENT, ALL REFERENCES IN THE HIGHWAY STANDARDS AND STANDARD SPECIFICATIONS FOR REINFORCEMENT, DOWEL BARS AND TIE BARS IN PAVEMENT, SHOULDERS, CURB, GUTTER, COMBINATION CURB AND GUTTER AND MEDIAN, AND CHAIR SUPPORTS FOR CRC PAVEMENT, SHALL BE EPOXY COATED, UNLESS NOTED ON THE PLAN.

18. TREES NOT MARKED FOR REMOVAL SHALL BE CONSIDERED AS DESIGNATED TO BE SAVED AND SHALL BE PROTECTED UNDER THE VILLAGE OF DOWNERS GROVE SPECIFICATIONS FOR TREE PROTECTION. LIMB PRUNING SHALL BE PERFORMED UNDER THE SUPERVISION OF THE ENGINEER AS COORDINATED WITH THE VILLAGE FORESTER AND SHALL BE UNDERTAKEN IN A TIMELY FASHION SO AS NOT TO INTERFERE WITH CONSTRUCTION. ALL LIMBS, BRANCHES, AND OTHER DEBRIS RESULTING FROM THIS WORK SHALL BE DISPOSED OF OFF-SITE BY THE CONTRACTOR AT HIS OWN EXPENSE. LIMB PRUNING SHALL BE CONSIDERED INCIDENTAL TO THE CONTRACT.

BENCHMARKS

#17 VENARD RD: POINT # 1 SET MAG NAIL LOCATED 6' EAST AND 8' NORTH OF NORTHEAST LOT CORNER OF LOT 48 ELEV. - 740.08
POINT # 199 MAG NAIL IN PATH 220' +/- WEST OF WEST RIGHT-OF-WAY LINE OF VENARD RD, ELEV. - 738.65

#18 GRANT & SEELEY: POINT # 2 CUT CROSS IN SIDEWALK AT THE NORTHEAST CORNER OF GRANT & SEELEY, ELEV. - 755.82

#20 EL SIERRA: POINT # 5 CUT CROSS IN CURB 77' FROM THE NORTHEAST CORNER OF LOT 112, ELEV. - 762.67

VERTICAL DATUM BASED ON DUPAGE COUNTY GEODETIC SURVEY MONUMENT BENCHMARK L12002. THE DISK IS LOCATED 200 FEET SOUTH OF THE CENTERLINE OF CURTISS ROAD AT THE NORTHWEST CORNER OF THE BRIDGE OVER ST. JOSEPH CREEK STAMPED DUPAGE COUNTY MAPS AND PLATS ELEVATION 692.8125 NGVD 29.

HORIZONTAL DATUM BASED ON NGS MONUMENT PID MF 1248. THE DISK IS LOCATED 200 FEET SOUTH OF THE CENTERLINE OF CURTISS ROAD AT THE NORTHWEST CORNER OF THE BRIDGE OVER ST. JOSEPH CREEK NAD83.

IDOT STANDARDS

000001-06	STANDARD SYMBOLS, ABBREVIATIONS, AND PATTERNS
280001-07	TEMPORARY EROSION CONTROL SYSTEMS
424001-07	PERPENDICULAR CURB RAMPS
424006-01	DIAGONAL CURB RAMPS
424016-01	MIDBLOCK CURB RAMPS
424021-01	DEPRESSED CORNER
424031-01	MEDIAN PEDESTRIAN CROSSINGS
442201-03	CLASS C AND D PATCHES
602001-02	CATCH BASIN - TYPE A
602601-02	PRECAST REINFORCED CONCRETE FLAT SLAB TOP
604001-03	FRAME AND LIDS TYPE 1
604006-04	FRAME AND GRATE TYPE 3
701301-04	LANE CLOSURE, 2L, 2W, SHORT TIME OPERATION
701311-03	LANE CLOSURE, 2L, 2W MOVING OPERATIONS-DAY ONLY
701501-06	URBAN LANE CLOSURES, 2L, 2W, UNDIVIDED
701801-05	SIDEWALK CORNER OR CROSSWALK CLOSURE
701901-02	TRAFFIC CONTROL DEVICES
780001-03	TYPICAL PAVEMENT MARKINGS
TC-10	DISTRICT ONE TRAFFIC CONTROL AND PROTECTION FOR SIDE ROADS, INTERSECTIONS, AND DRIVEWAYS
TC-13	DISTRICT ONE PAVEMENT MARKING LETTERS AND SYMBOLS FOR TRAFFIC STAGING

 BOXED ITEMS INDICATE WORK NOT PAID FOR SEPARATELY BUT INCLUDED IN ANOTHER PAY ITEM OR INCLUDED IN THE CONTRACT.

FILE NAME ==	USER NAME - USER	DESIGNED - TJT	REVISED 05/09/13
FILE NAME ==		DRAWN - TJT	REVISED
	PLOT SCALE -	CHECKED - DF	REVISED
	PLOT DATE - 05/13/13	DATE - 03/11/13	REVISED

STATE OF ILLINOIS
DEPARTMENT OF TRANSPORTATION

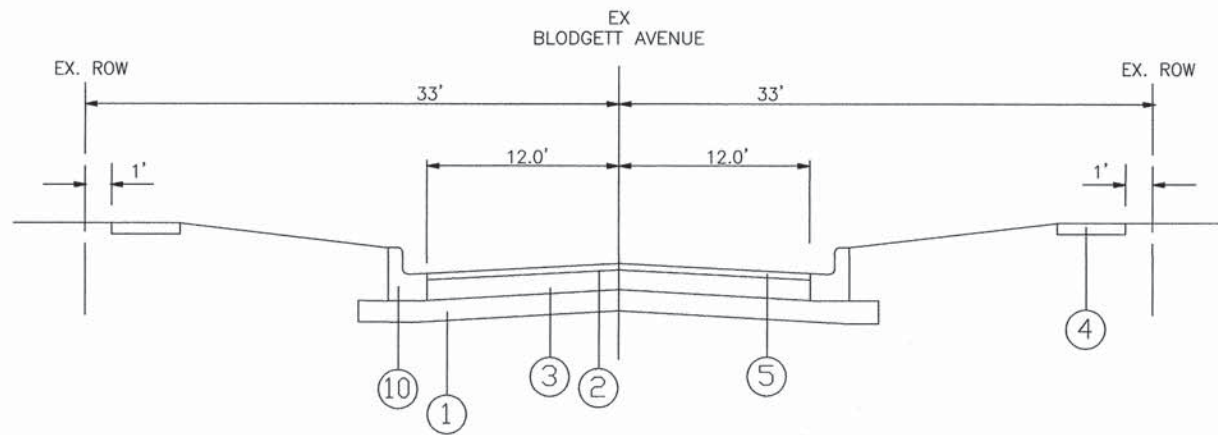
GENERAL NOTES		F. A. U. REC.	SECTION	COUNTY	TOTAL SHEETS	SHEET NO.
HIGHWAY STANDARDS			12-00104-00-SW	DU PAGE	11	2
BENCHMARKS		CONTRACT NO. 63840				
NOT TO SCALE		STA. TO STA.		FED. ROAD DIST. NO. 1	ILLINOIS	FED. AID PROJECT

SUMMARY OF QUANTITIES

CODE NO.	PAY ITEM	UNIT	TOTAL QUANTITY	CONSTRUCTION TYPE CODE			
				SEELEY AVENUE AT GRANT AVENUE 0021	BLODGETT AVENUE AT RANDALL STREET 0004	BELL AIRE SCHOOL, VENARD ROAD TO SCHOOL LIMITS 0028	EL SIERRA SCHOOL, 68TH STREET TO SCHOOL LIMITS 0028
* 20101200	TREE ROOT PRUNING	EACH	11	1.0	10.0		
20200100	EARTH EXCAVATION	CU YD	302	32.0	110.0	60.0	100.0
20201200	REMOVAL AND DISPOSAL OF UNSUITABLE MATERIAL	CU YD	30	3.0	11.0	6.0	10.0
20400800	FURNISHED EXCAVATION	CU YD	185		185.0		
20700220	POROUS GRANULAR EMBANKMENT	CU YD	30		30.0		
20800150	TRENCH BACKFILL	CU YD	15		15.0		
21101615	TOPSOIL FURNISH AND PLACE, 4 INCH	SQ YD	1270	250.0	340.0	300.0	380.0
25000400	NITROGEN FERTILIZER NUTRIENT	POUND	50	10.0	13.0	12.0	15.0
25000500	PHOSPHOROUS FERTILIZER NUTRIENT	POUND	50	10.0	13.0	12.0	15.0
25000600	POTASSIUM FERTILIZER NUTRIENT	POUND	50	10.0	13.0	12.0	15.0
25200200	SUPPLEMENTAL WATERING	UNIT	25	5.0	10.0	5.0	5.0
25200100	SODDING	SQ YD	1645	250.0	715.0	300.0	380.0
28000510	INLET FILTERS	EACH	7		7.0		
31101600	SUBBASE GRANULAR MATERIAL, TYPE B 8"	SQ YD	490		490.0		
35101600	AGGREGATE BASE COURSE, TYPE B 4"	SQ YD	818	112.0	50.0	270.0	386.0
40600100	BITUMINOUS MATERIALS (PRIME COAT)	GALLON	98		98.0		
40600300	AGGREGATE (PRIME COAT)	TON	20		20.0		
40600625	LEVELING BINDER (MACHINE METHOD), N50	TON	45		45.0		
40600982	HOT-MIX ASPHALT SURFACE REMOVAL - BUTT JOINT	SQ YD	80		80.0		
40603060	HOT-MIX ASPHALT BINDER COURSE, IL-19.0, N50	TON	152		152.0		
40603335	HOT MIX ASPHALT SURFACE COURSE, MIX D, N50	TON	210		90.0	50.0	70.0
42400200	PORTLAND CEMENT CONCRETE SIDEWALK 5 INCH	SQ FT	2380	1155.0	1000.0	225.0	

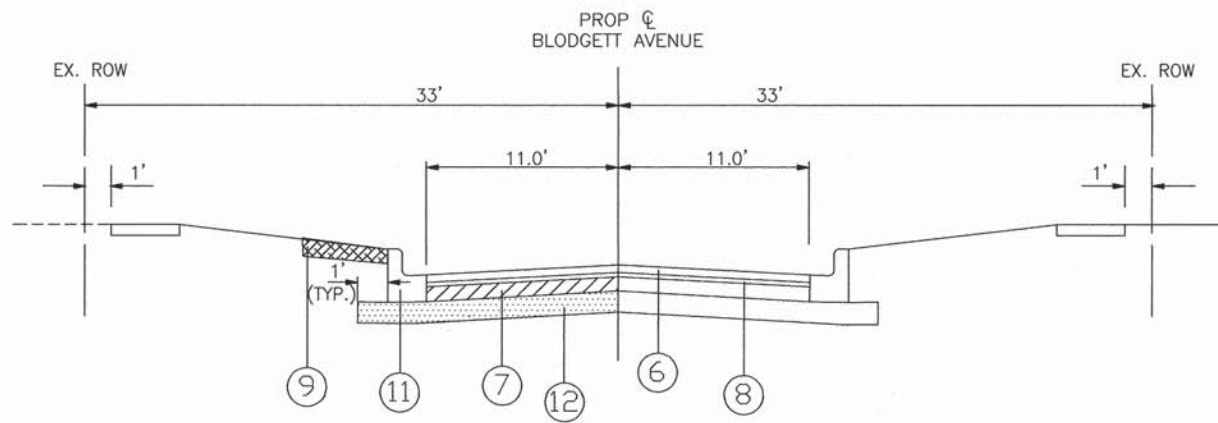
CODE NO.	PAY ITEM	UNIT	TOTAL QUANTITY	CONSTRUCTION TYPE CODE			
				SEELEY AVENUE AT GRANT AVENUE 0021	BLODGETT AVENUE AT RANDALL STREET 0004	BELL AIRE SCHOOL, VENARD ROAD TO SCHOOL LIMITS 0028	EL SIERRA SCHOOL, 68TH STREET TO SCHOOL LIMITS 0028
42400800	DETECTABLE WARNINGS	SQ FT	160	80.0	60.0	20.0	
44000100	PAVEMENT REMOVAL	SQ YD	720		720.0		
44000159	HOT-MIX ASPHALT SURFACE REMOVAL, 2 1/2"	SQ YD	975		975.0		
44000200	DRIVEWAY PAVEMENT REMOVAL	SQ YD	45		45.0		
44000500	COMBINATION CURB AND GUTTER REMOVAL	FOOT	783	263.0	500.0		
44000800	SIDEWALK REMOVAL	SQ FT	3875	800.0	1500.0	1575.0	
44201692	CLASS D PATCHES, TYPE II, 4 INCH	SQ YD	30	30.0			
550A0340	STORM SEWERS, CLASS A, TYPE 2 12"	FOOT	26		26.0		
60200305	CATCH BASINS, TYPE A, 4'-DIAMETER, TYPE 3 FRAME AND GRATE	EACH	1		1.0		
60235700	INLETS, TYPE A, TYPE 3 FRAME AND GRATE	EACH	1		1.0		
60250600	CATCH BASINS TO BE ADJUSTED WITH NEW TYPE 3 FRAME AND GRATE	EACH	6		6.0		
60603800	COMBINATION CONCRETE CURB AND GUTTER, TYPE B-6.12	FOOT	328	263.0	65.0		
60604400	COMBINATION CONCRETE CURB AND GUTTER, TYPE B-6.18	FOOT	350		350.0		
67100100	MOBILIZATION	L SUM	1	0.3	0.5	0.1	0.1
70102620	TRAFFIC CONTROL AND PROTECTION, STANDARD 701501	L SUM	1	0.3	0.5	0.1	0.1
70102640	TRAFFIC CONTROL AND PROTECTION, STANDARD 701801	L SUM	1	0.3	0.5	0.1	0.1
* XX066910	TREE PROTECTION, SPECIAL	EACH	9		9		
X0323677	STREET SWEEPING	HOUR	12		12.0		
X2800510	INLET FILTER CLEANING	EACH	7		7.0		
X8030310	FRAMES AND LIDS TO BE ADJUSTED, (SPECIAL)	EACH	5		5.0		
Z0004510	HOT-MIX ASPHALT DRIVEWAY PAVEMENT, 3"	SQ YD	45		45.0		

* DENOTES SPECIALITY ITEM

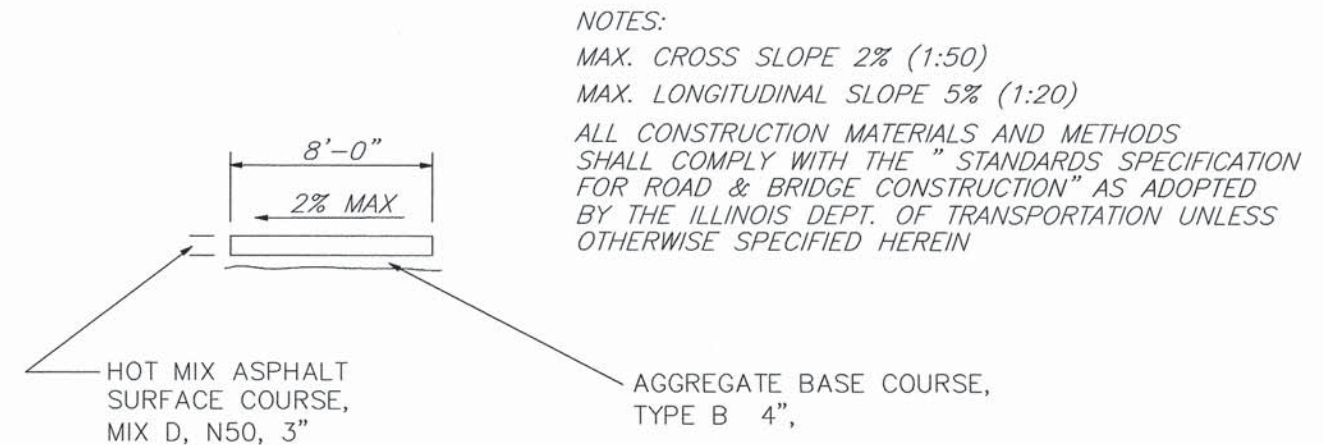


EXISTING TYPICAL SECTION
STA. 10+50 TO STA. 11+55 BLODGETT AVENUE

- LEGEND**
- ① EXISTING SUBGRADE
 - ② EXISTING BITUMINOUS PAVEMENT, 2" - 4", VARIES
 - ③ EXISTING CONCRETE, 5 1/2" - 11", VARIES
 - ④ EXISTING PORTLAND CEMENT CONCRETE SIDEWALK
 - ⑤ PROPOSED PAVEMENT REMOVAL
 - ⑥ PROPOSED HMA SURFACE COURSE, MIX "D", N50, 1 1/2"
 - ⑦ PROPOSED HMA BINDER COURSE, IL-19.0, N-50, 6"
 - ⑧ LEVELING BINDER (MACHINE METHOD), IL 9.5, N-50, 3/4"
 - ⑨ PROPOSED SODDING, SALT TOLERANT & TOP SOIL FURNISH AND PLACE, 4"
 - ⑩ EXISTING COMBINATION CONCRETE CURB & GUTTER, TYPE B6.12 OR B6.18 REMOVAL
 - ⑪ PROPOSED COMBINATION CONCRETE CURB & GUTTER, TYPE B6.12 OR B6.18 REPLACEMENT
 - ⑫ SUBBASE GRANULAR MATERIAL, TYPE B, 8"



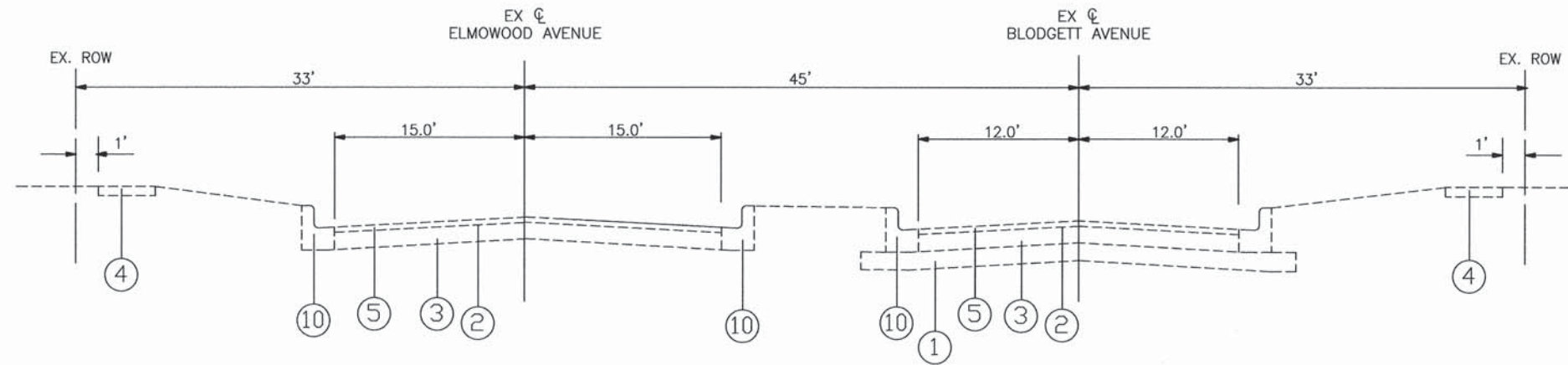
PROPOSED TYPICAL SECTION
STA. 10+50 TO STA. 11+55 BLODGETT AVENUE



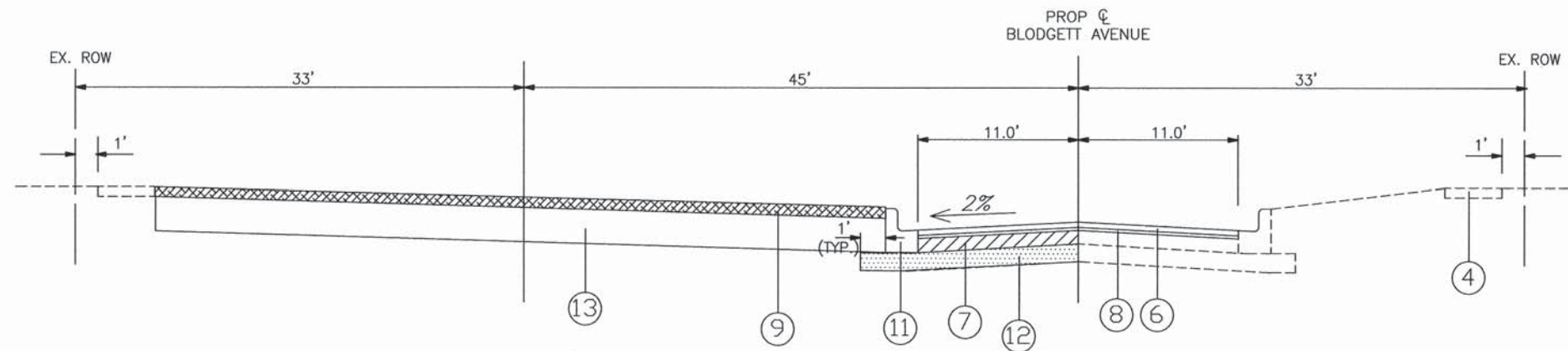
PROPOSED TYPICAL ASPHALT SIDEWALK SECTION
 BELL AIRE SCHOOL, VENARD ROAD TO SCHOOL LIMITS
 EL SIERRA SCHOOL, 68TH STREET TO SCHOOL LIMITS

HOT-MIX ASPHALT MIXTURE REQUIREMENTS	
MIXTURE TYPE	AIR VOIDS @ Ndes
HOT MIX ASPHALT SURFACE COURSE, MIX "D", N50 (IL 9.5 mm) - 1.5"	4% @ 50 GYR
HMA BINDER COURSE, IL-19.0, N-50, 6" (IN 2 LIFTS)	4% @ 50 GYR
LEVELING BINDER (MACHINE METHOD), N50, (IL 9.5 mm) - 3/4"	4% @ 50 GYR
DRIVEWAY/BIKE PATH: HOT MIX ASPHALT SURFACE COURSE, MIX "D" N50 - 3"	4% @ 50 GYR
CLASS D PATCHES, TYPE II, 4"	4% @ 70 GYR

-THE UNIT WEIGHT USED TO CALCULATE ALL HMA SURFACE MIXTURE QUANTITIES IS 112 LBS/SQYD/IN.
 -THE "AC TYPE" FOR POLYMERIZED HMA MIXES SHALL BE "SBS/SBR PG 76 - 22" AND FOR NON-POLYMERIZED HMA THE "AC TYPE" SHALL BE "PG 64 - 22" UNLESS MODIFIED BY DISTRICT ONE SPECIAL PROVISIONS. FOR "PERCENT OF RAP" SEE DISTRICT ONE SPECIAL PROVISIONS.



EXISTING TYPICAL SECTION
STA. 11+55 TO STA. 12+50 BLODGETT AVENUE



PROPOSED TYPICAL SECTION
STA. 11+55 TO STA. 12+50 BLODGETT AVENUE

LEGEND

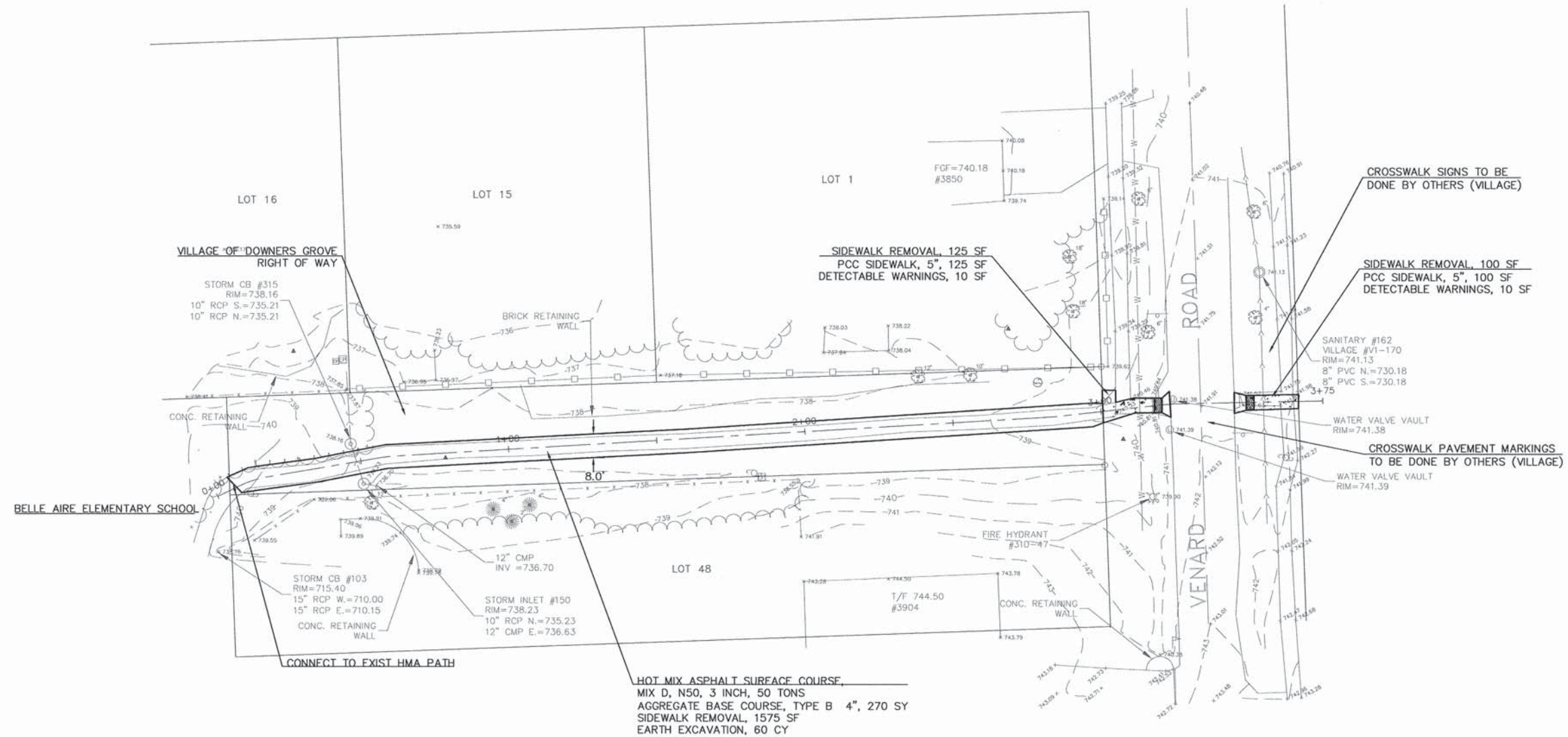
- ① EXISTING SUBGRADE
- ② EXISTING BITUMINOUS PAVEMENT, 2" - 4", VARIES
- ③ EXISTING CONCRETE, 5 1/2" - 11", VARIES
- ④ EXISTING PORTLAND CEMENT CONCRETE SIDEWALK
- ⑤ PROPOSED PAVEMENT REMOVAL
- ⑥ PROPOSED HMA SURFACE COURSE, MIX "D", N50, 1 1/2"
- ⑦ PROPOSED HMA BINDER COURSE, IL-19.0, N-50, 6"
- ⑧ LEVELING BINDER (MACHINE METHOD), IL 9.5, N-50, 3/4"
- ⑨ PROPOSED SODDING, SALT TOLERANT & TOP SOIL FURNISH AND PLACE, 4"
- ⑩ EXISTING COMBINATION CONCRETE CURB & GUTTER, TYPE B6.12 OR B6.18 REMOVAL
- ⑪ PROPOSED COMBINATION CONCRETE CURB & GUTTER, TYPE B6.12 OR B6.18 REPLACEMENT
- ⑫ SUBBASE GRANULAR MATERIAL, TYPE B, 8"
- ⑬ FURNISHED EXCAVATION

FILE NAME =	USER NAME - USER	DESIGNED - TJT	REVISED
FILE NAME =		DRAWN - TJT	REVISED
	PLOT SCALE -	CHECKED - DF	REVISED
	PLOT DATE - 03/11/13	DATE - 03/11/13	REVISED

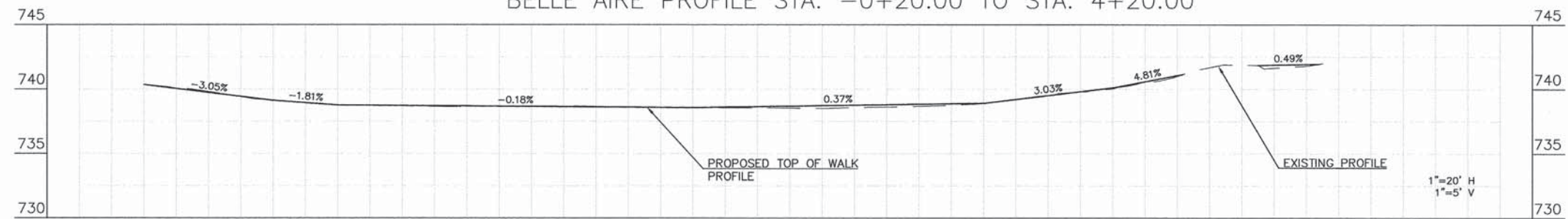
STATE OF ILLINOIS
DEPARTMENT OF TRANSPORTATION

SCALE: NONE	SAFE ROUTES TO SCHOOL TYPICAL SECTIONS - BLODGETT AVE			
	F. A. U. SEC.	SECTION	COUNTY	TOTAL SHEETS
	12-00104-00-SW	DU PAGE	11	5
	CONTRACT NO. 63840			
	FED. ROAD DIST. NO. 1	ILLINOIS	FED. AID PROJECT	

PARRISH CT

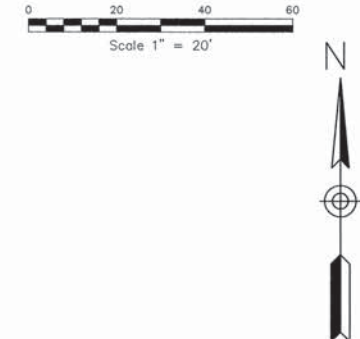
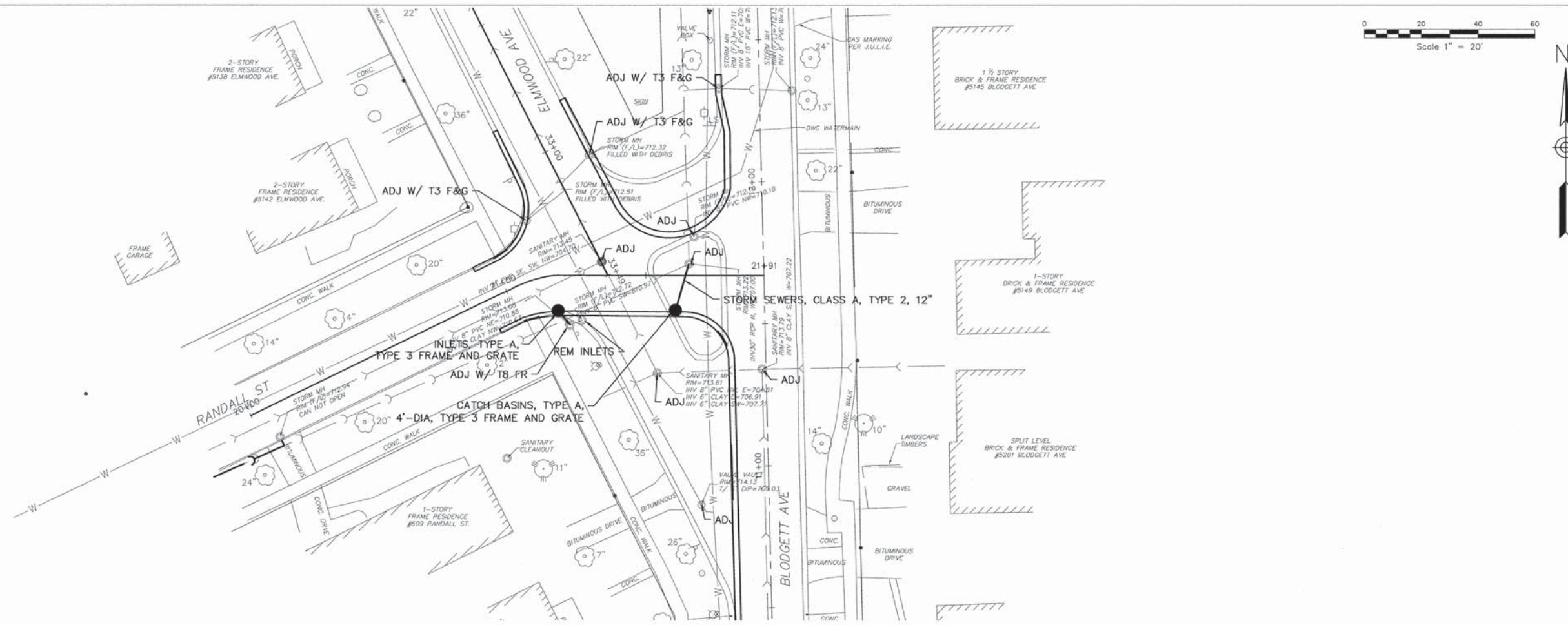


BELLE AIRE PROFILE STA. -0+20.00 TO STA. 4+20.00

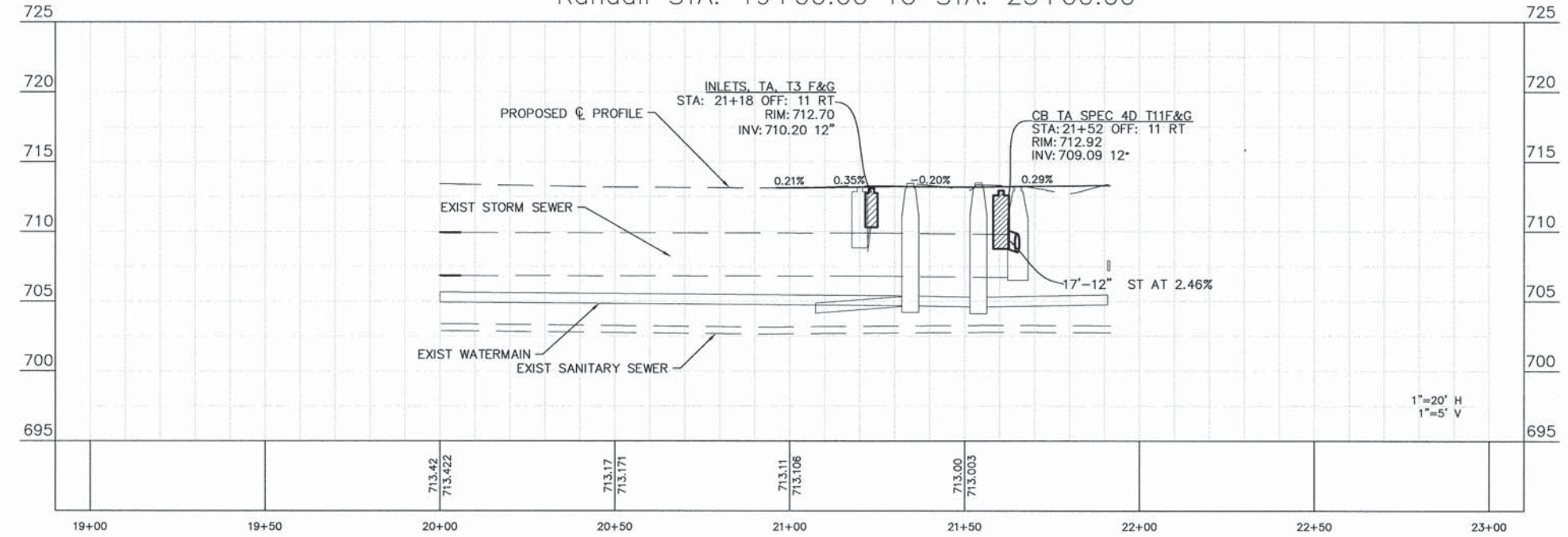


EG: FG:	EG: 740.35 FG: 740.35	EG: 738.83 FG: 738.85	EG: 738.65 FG: 738.69	EG: 738.62 FG: 738.60	EG: 738.52 FG: 738.68	EG: 738.76 FG: 738.67	EG: 740.04 FG: 740.12	EG: 741.85 FG:	EG: FG:	EG: FG:	
	-0+20	0+00	0+50	1+00	1+50	2+00	2+50	3+00	3+50	4+00	4+20

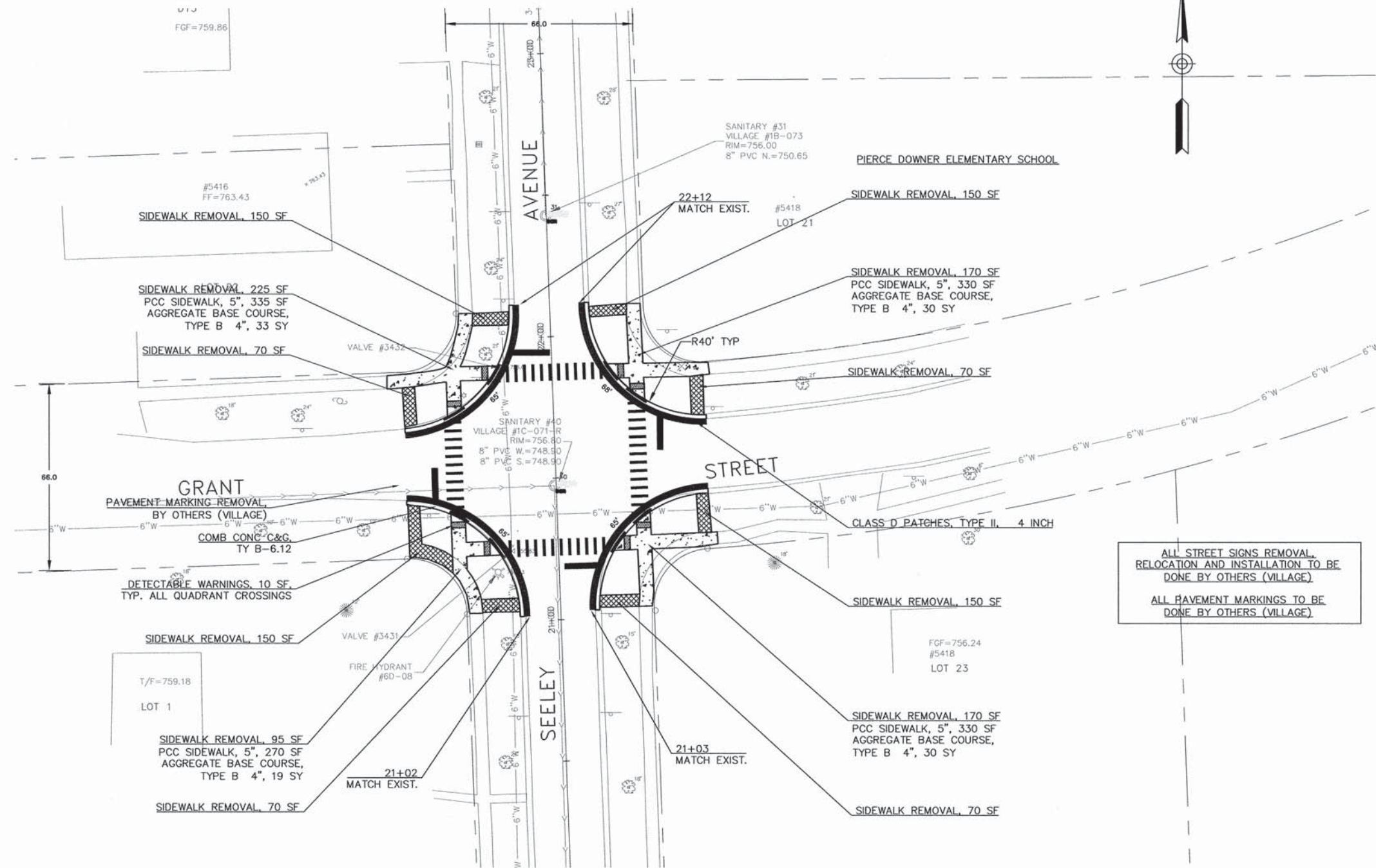
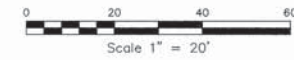
FILE NAME =	USER NAME - USER	DESIGNED - TJT	REVISED 05/09/13	STATE OF ILLINOIS DEPARTMENT OF TRANSPORTATION	SAFE ROUTES TO SCHOOL PLAN AND PROFILE - BELL AIRE SCHOOL, VENARD ROAD TO SCHOOL LIMITS	F. A. U. NO.	SECTION	COUNTY	SHEET	SHEET NO.
FILE NAME =		DRAWN - TJT	REVISED			12-00104-00-SW	DU PAGE	11	6	
PLOT SCALE -		CHECKED - DF	REVISED			CONTRACT NO. 63840				
PLOT DATE - 03/11/13		DATE - 03/11/13	REVISED			FED. ROAD DIST. NO. 1	ILLINOIS	FED. AID PROJECT		
				SCALE: 1" = 20'	STA. 0+00 TO STA. 3+61					



Randall STA. 19+00.00 TO STA. 23+00.00

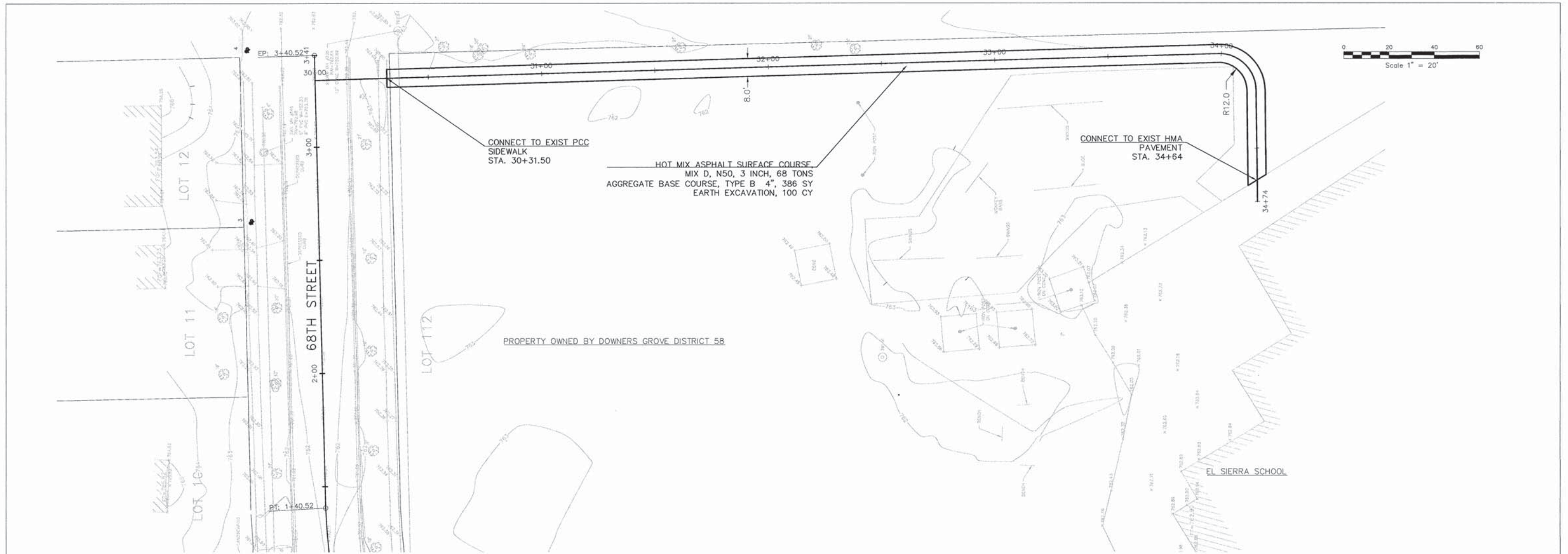


FILE NAME =	USER NAME - USER	DESIGNED - TJT	REVISED 05/09/13	STATE OF ILLINOIS DEPARTMENT OF TRANSPORTATION	SAFE ROUTES TO SCHOOL DRAINAGE & UTILITIES RANDALL STREET STA. 19+80 TO 22+20	F.A.S. NO.	SECTION	COUNTY	TOTAL SHEETS	SHEET NO.
FILE NAME =		DRAWN - TJT	REVISED			12-00104-00-SW	DU PAGE	11	8	
PLOT SCALE -		CHECKED - DF	REVISED			CONTRACT NO. 63840				
PLOT DATE - 05/09/13		DATE - 03/11/13	REVISED			FED. ROAD DIST. NO. 1	ILLINOIS	FED. AID PROJECT		

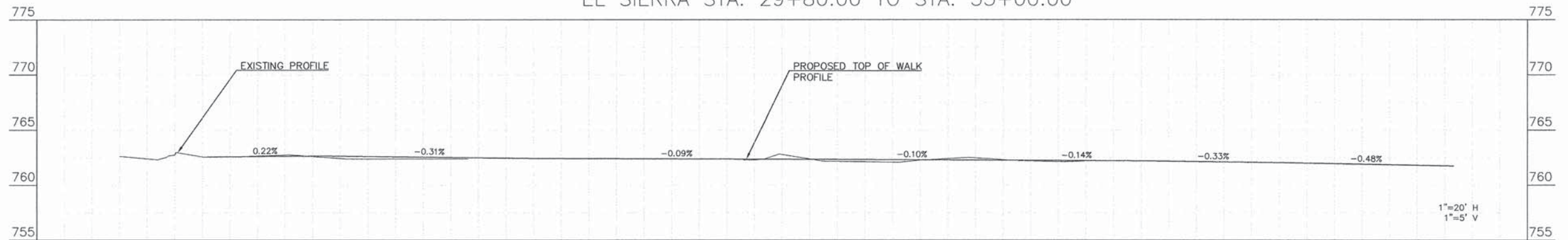


ALL STREET SIGNS REMOVAL,
RELOCATION AND INSTALLATION TO BE
DONE BY OTHERS (VILLAGE).
ALL PAVEMENT MARKINGS TO BE
DONE BY OTHERS (VILLAGE).

FILE NAME =	USER NAME - USER	DESIGNED - TJT	REVISED 05/09/13	STATE OF ILLINOIS DEPARTMENT OF TRANSPORTATION	SAFE ROUTES TO SCHOOL PLAN - SEELEY AVENUE AT GRANT AVENUE		SECTION 12-00104-00-SW	COUNTY DU PAGE	SHEET 11	SHEET 9		
FILE NAME =		DRAWN - TJT	REVISED		SCALE: 1" = 20'						CONTRACT NO. 63840	
		CHECKED - DF	REVISED		STA. 19+80 TO STA. 22+20							FED. ROAD DIST. NO. 1
		DATE - 03/11/13	REVISED		ILLINOIS							

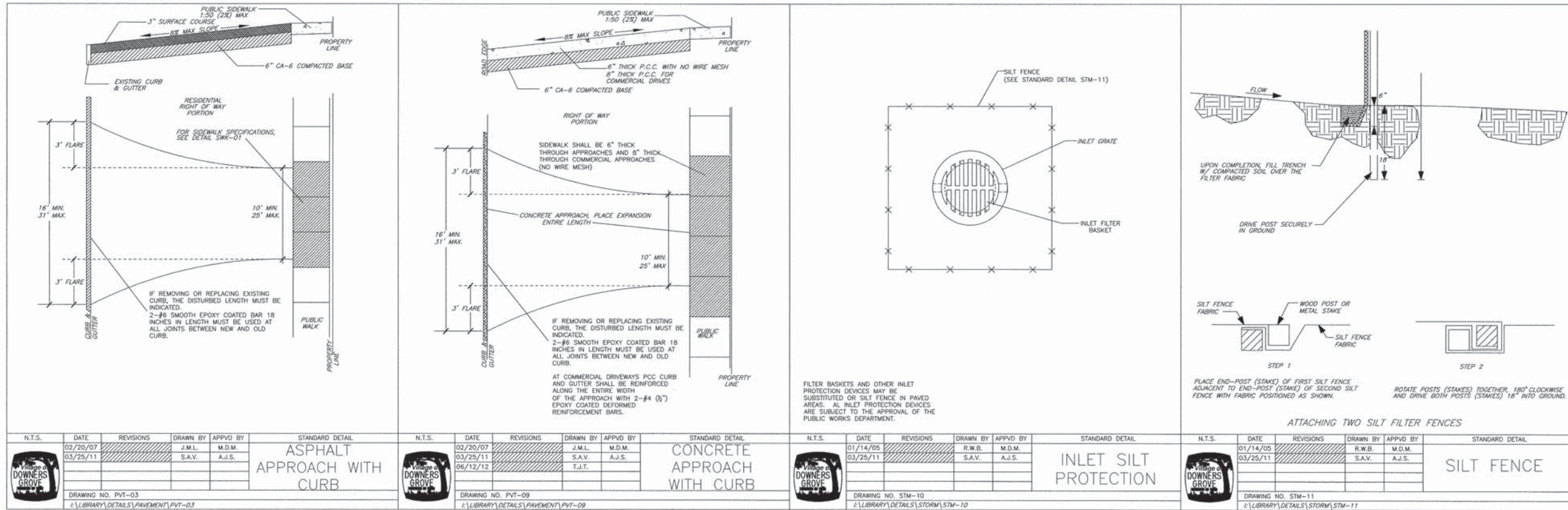


EL SIERRA STA. 29+80.00 TO STA. 35+00.00



EG: 762.62	FG: 762.61	EG: 762.66	FG: 762.61	EG: 762.39	FG: 762.59	EG: 762.37	FG: 762.43	EG: 762.32	FG: 762.38	EG: 762.38	FG: 762.34	EG: 762.40	FG: 762.29	EG: 762.19	FG: 762.23	EG: 762.11	FG: 762.11	EG: 761.90	FG: 761.90
29+80	30+00	30+50	31+00	31+50	32+00	32+50	33+00	33+50	34+00	34+50	35+00								

FILE NAME =	USER NAME - USER	DESIGNED - TJT	REVISED 05/09/13	STATE OF ILLINOIS DEPARTMENT OF TRANSPORTATION	SAFE ROUTES TO SCHOOL PLAN AND PROFILE - EL SIERRA SCHOOL, 68TH STREET TO SCHOOL LIMITS	SCALE: 1" = 20'	STA. 0+00 TO STA. 4+38	F. A. M. NO.	SECTION	COUNTY	TOTAL SHEETS	SHEET NO.
FILE NAME =		DRAWN - TJT	REVISED 05/13/13						12-00104-00-SW	DU PAGE	11	10
	PLOT SCALE -	CHECKED - DF	REVISED						CONTRACT NO. 63840			
	PLOT DATE - 05/09/13	DATE - 03/11/13	REVISED						FED. ROAD DIST. NO. 1 ILLINOIS FED. AID PROJECT			



FILE NAME =	USER NAME -- USER	DESIGNED -- TJT	REVISED 05/09/13
FILE NAME =		DRAWN -- TJT	REVISED
	PLOT SCALE --	CHECKED -- DF	REVISED
	PLOT DATE -- 05/09/13	DATE -- 03/14/13	REVISED

STATE OF ILLINOIS
 DEPARTMENT OF TRANSPORTATION

SAFE ROUTES TO SCHOOL
 VILLAGE DETAILS

NOT TO SCALE STA. TO STA.

F. A. S. NO.	SECTION	COUNTY	SHEET NO.	SHEET
	12-00104-00-SW	DU PAGE	11	11
CONTRACT NO. 63840				
FED. ROAD DIST. NO. 1		ILLINOIS	FED. AID PROJECT	