

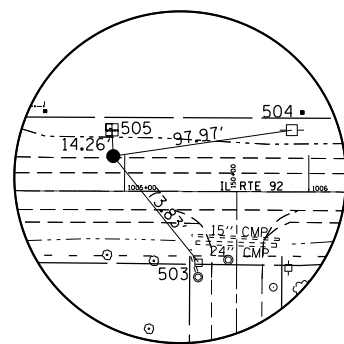
HORIZONTAL & VERTICAL CONTROL

HORIZONTAL CONTROL POINTS							
POINT	NORTH	EAST	ELEVATION	CHAIN	STATION	OFFSET	DESCRIPTION
1	1738107.6273	2141500.0863	581.5833	IL92	1004+93.7827	19.0642' LT	
2	1738067.8992	2143089.1954	579.0001	IL92	1020+81.3819	21.5021' RT	
101	1739360.3782	2121895.1043	560.2438	IL92	807+48.2125	19.5901' LT	GPS CONTROL POINT, PIN
102	1739611.9095	2122870.5851	559.9956	IL92	817+52.9945	22.0626' LT	GPS CONTROL POINT, PIN
103	1739614.4543	2123906.7708	556.0038	IL92	827+86.7384	19.0347' LT	GPS CONTROL POINT, PIN
104	1739379.8626	2124970.3634	556.2843	IL92	838+74.4772	18.7845' RT	GPS CONTROL POINT, PIN
105	1739128.5339	2126240.5907	556.4142	IL92	851+69.0226	21.0634' RT	GPS CONTROL POINT, PIN
107	1738112.7932	2140574.6607	578.2567	IL92	995+68.3439	20.507' LT	GPS CONTROL POINT, PK NAIL
109	1738898.5474	2127970.9521	555.9114	IL92	869+13.7689	18.3514' RT	GPS CONTROL POINT, GPS CONTROL POINT
65709290	1738290.2084	2131492.5900	555.1859	IL92	904+86.3934	56.8295' RT	D-2 NETWORK MONUMENT ROC92-3A @ level
65723075	1738141.7200	2134112.3300	563.9741	IL92	931+06.2680	37.3750' RT	D-2 NETWORK MONUMENT ROC92-3B @ level

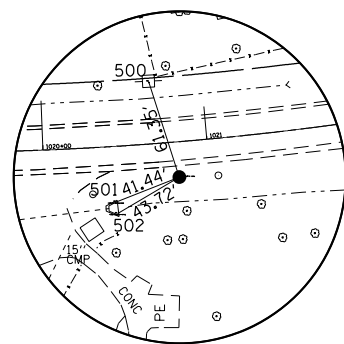
SURVEY WORK POINTS							
POINT	NORTH	EAST	ELEVATION	CHAIN	STATION	OFFSET	DESCRIPTION
AMT114	1739525.6680	2122412.9990	558.4500	IL92	812+88.9483	17.8865' LT	SURVEY WORK POINT, NAIL
AMT115	1739493.8800	2122732.3450	575.8440	IL92	815+98.3344	74.9973' RT	SURVEY WORK POINT, NAIL
AMT116	1739476.1120	2122599.5220	567.9550	IL92	814+62.1740	69.0559' RT	SURVEY WORK POINT, NAIL
AMT117	1739617.5420	2122792.3820	560.3790	IL92	816+76.7836	38.1236' LT	SURVEY WORK POINT, NAIL
AMT118	1739585.8990	2122713.1850	559.5120	IL92	815+94.2381	18.9072' LT	SURVEY WORK POINT, NAIL
AMT119	1739570.3490	2122625.0630	559.0100	IL92	815+05.1431	18.7413' LT	SURVEY WORK POINT, NAIL
AMT120	1739552.2640	2122542.5260	558.9770	IL92	814+21.0163	16.8184' LT	SURVEY WORK POINT, NAIL
AMT121	1739506.2960	2122329.2580	558.7410	IL92	812+03.0117	16.5684' LT	SURVEY WORK POINT, NAIL
AMT123	1739447.6640	2122116.3090	560.0760	IL92	809+83.9185	16.7291' LT	SURVEY WORK POINT, NAIL
AMT124	1739415.2450	2122028.2790	560.5940	IL92	808+90.9053	16.525' LT	SURVEY WORK POINT, NAIL
AMT125	1739638.1150	2122918.0980	562.3390	IL92	818+02.9235	42.4056' LT	SURVEY WORK POINT, NAIL
AMT126	1739665.6900	2122986.9080	557.8690	IL92	818+73.4001	62.5652' LT	SURVEY WORK POINT, NAIL
AMT127	1739651.2260	2123065.7030	557.2780	IL92	819+49.6856	41.1794' LT	SURVEY WORK POINT, NAIL
AMT128	1739658.3670	2123138.9290	550.2560	IL92	820+22.5217	43.0831' LT	SURVEY WORK POINT, NAIL
AMT129	1739665.1130	2123234.6130	554.3600	IL92	821+17.4580	44.8629' LT	SURVEY WORK POINT, NAIL
AMT130	1739656.0620	2123338.5480	555.8070	IL92	822+20.1636	32.8163' LT	SURVEY WORK POINT, NAIL
AMT131	1739534.3840	2122767.6660	571.7040	IL92	816+40.1026	40.4989' RT	SURVEY WORK POINT, NAIL

REFERENCE TIES						
POINT	NORTH	EAST	CHAIN	STATION	OFFSET	DESCRIPTION
500	1738125.8753	2143070.6745	IL92	1020+67.4402	37.7565' LT	POWER POLE, SHINER
501	1738052.7084	2143050.6356	IL92	1020+42.3904	33.8604' RT	FLARED END SEC WITH GRATE, FLARED END SEC WITH GRATE
502	1738045.5847	2143051.5880	IL92	1020+42.8871	41.0296' RT	FLARED END SEC WITH GRATE, FLARED END SEC WITH GRATE
503	1738050.0656	2141546.3272	IL92	1005+40.2548	38.311' RT	CABLE TV SPLICE BOX
504	1738121.6775	2141597.0439	IL92	1005+90.6830	33.5044' LT	POWER POLE, POWER POLE
505	1738121.8796	2141499.4256	IL92	1004+93.0647	33.3138' LT	TELEPHONE SPLICE BOX
570	1738126.1800	2140629.2280	IL92	996+22.8569	34.1132' LT	POWER POLE
571	1738132.1490	2140547.6870	IL92	995+41.2925	39.7541' LT	POWER POLE
572	1738050.4920	2140491.4260	IL92	994+85.3605	42.1286' RT	POWER POLE
573	1738846.9590	2127987.2060	IL92	869+37.5540	30.2266' RT	POWER POLE
574	1738902.0280	2128049.1980	IL92	869+90.6147	33.4929' LT	HEADWALL
575	1738838.8180	2128039.3830	IL92	869+90.3617	30.4741' RT	HEADWALL
576	1739106.7830	2126166.4000	IL92	851+00.1417	55.8833' RT	POWER POLE
577	1739065.3890	2126366.9050	IL92	853+04.1454	61.0739' RT	POWER POLE
578	1739338.4560	2125003.3850	IL92	839+14.9015	53.0016' RT	POWER POLE
579	1739387.6836	2124924.9561	IL92	838+28.4152	19.9173' RT	MAILBOX
580	1739349.5660	2124905.8710	IL92	838+17.0841	61.0123' RT	LIGHT POLE
581	1739544.0790	2123802.0580	IL92	826+89.3711	61.788' RT	POWER POLE
582	1739533.0920	2123980.3610	IL92	828+70.1908	52.5608' RT	POWER POLE
583	1739531.4130	2123881.4430	IL92	827+70.8464	66.3327' RT	TREE DECIDUOUS
584	1739541.8690	2122895.4830	IL92	817+69.1162	50.5143' RT	POWER POLE
585	1739531.4070	2122707.8520	IL92	815+80.0498	33.9816' RT	GUY WIRE
586	1739443.7600	2122847.5040	IL92	817+07.5437	141.6415' RT	FLAG POLE
587	1739363.9040	2121848.4310	IL92	807+08.5950	43.4529' LT	HEADWALL
588	1739319.2280	2121972.7280	IL92	808+01.6761	50.4622' RT	POWER POLE
589	1739303.1477	2121880.8701	IL92	807+10.0293	25.4059' RT	HEADWALL

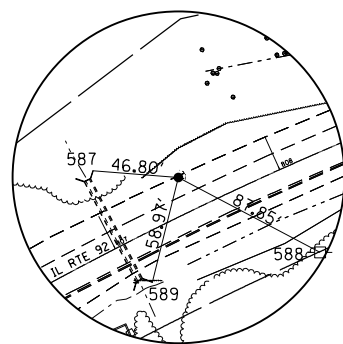
BENCH MARKS							
POINT	NORTH	EAST	ELEVATION	CHAIN	STATION	OFFSET	DESCRIPTION
401	1738047.4508	2141594.8514	584.8369	IL92	1005+88.7892	40.7305' RT	GPS CONTROL POINT
406	1738126.2746	2140581.9598	579.4434	IL92	995+75.5887	34.0176' LT	GPS CONTROL POINT
440	1739035.3174	2126772.1156	553.7062	IL92	857+07.9594	25.6768' RT	HEADWALL, HEADWALL
450	1738128.9109	2136175.8785	563.0622	IL92	951+69.5324	18.9277' LT	DISK, DISK
469	1738082.5425	2138575.7886	577.3583	IL92	975+69.6096	17.7852' RT	HEADWALL, HEADWALL



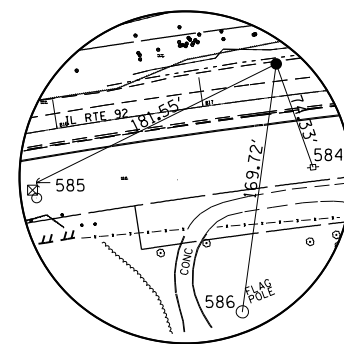
HORIZONTAL CONTROL POINT NO. 1



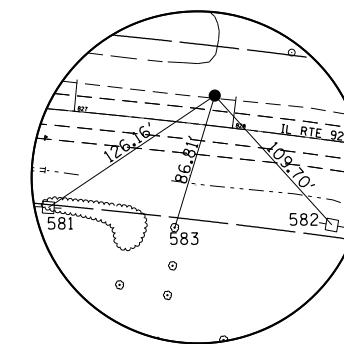
HORIZONTAL CONTROL POINT NO. 2



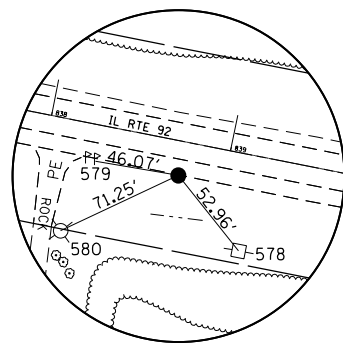
HORIZONTAL CONTROL POINT NO. 101



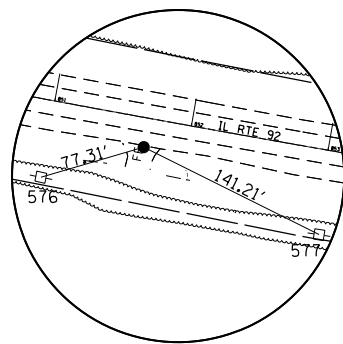
HORIZONTAL CONTROL POINT NO. 102



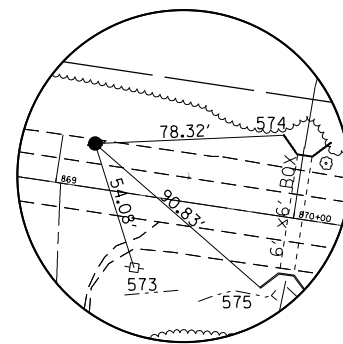
HORIZONTAL CONTROL POINT NO. 103



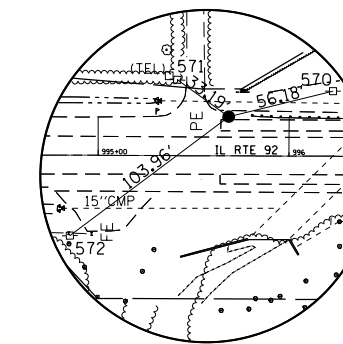
HORIZONTAL CONTROL POINT NO. 104



HORIZONTAL CONTROL POINT NO. 105



HORIZONTAL CONTROL POINT NO. 109



HORIZONTAL CONTROL POINT NO. 107