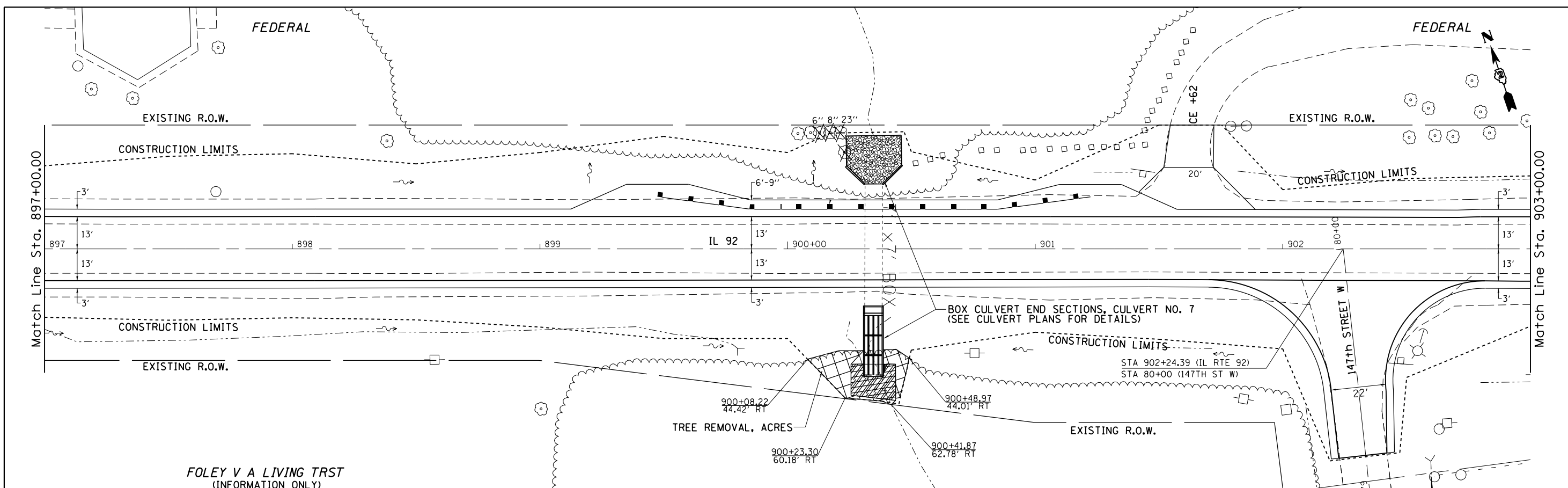
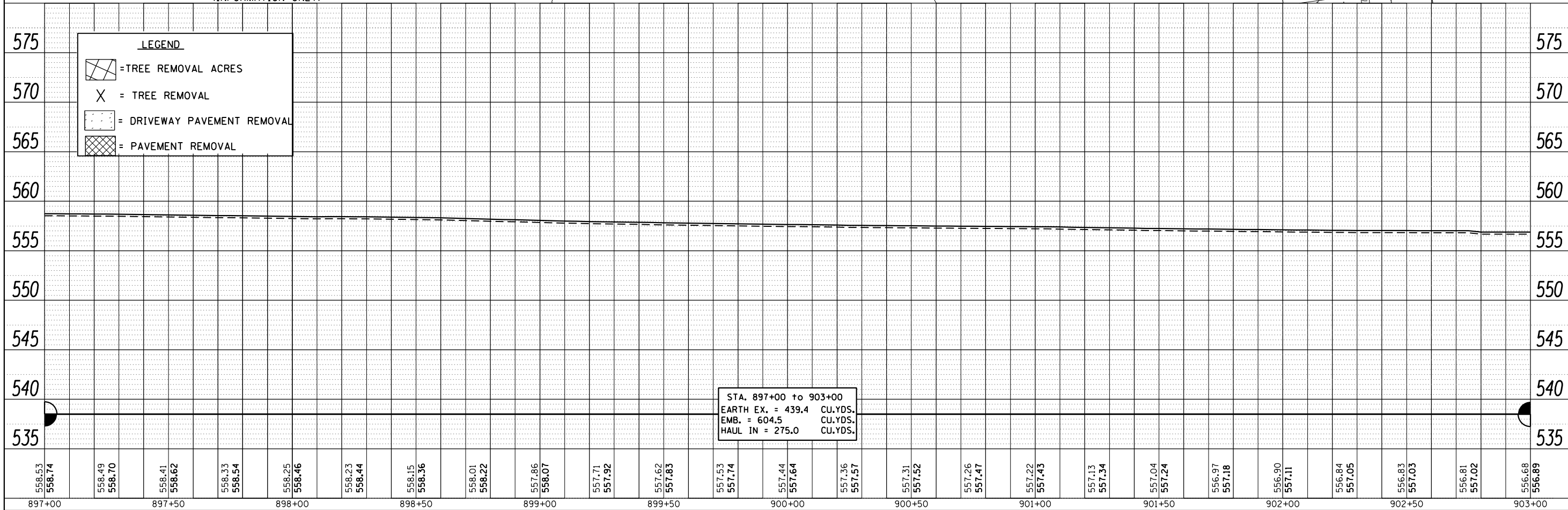


PLAN  
 SURVEYED BY: \_\_\_\_\_ DATE: \_\_\_\_\_  
 ALIGNMENT CHECKED BY: \_\_\_\_\_  
 RT. OF WAY CHECKED BY: \_\_\_\_\_  
 NO. \_\_\_\_\_

PROFILE  
 SURVEYED BY: \_\_\_\_\_ DATE: \_\_\_\_\_  
 GRADES CHECKED BY: \_\_\_\_\_  
 B.M. NOTED BY: \_\_\_\_\_  
 STRUCTURE NOTATIONS CHKD BY: \_\_\_\_\_  
 NO. \_\_\_\_\_



FOLEY V A LIVING TRST  
 (INFORMATION ONLY)



FILE NAME = c:\pw_work\pwsdot\grantpm\d0261271\020741	USER NAME = grantpm	DESIGNED -	REVISED -	<b>STATE OF ILLINOIS DEPARTMENT OF TRANSPORTATION</b>	<b>IL 92 Plan &amp; Profile</b>	F.A.P. RTE. = 599	SECTION = (83MFT & 103MFT)W	COUNTY = ROCK ISLAND	TOTAL SHEETS = 340	SHEET NO. = 67	
PLOT SCALE = 41.5770' / 1"	CHECKED -	REVISED -	SCALE: _____			SHEET _____	OF _____	SHEETS _____	STA. _____	TO STA. _____	CONTRACT NO. 64H11
PLOT DATE = Wed Mar 28 11:23:14 2013	DATE -	REVISED -	ILLINOIS FED. AID PROJECT								