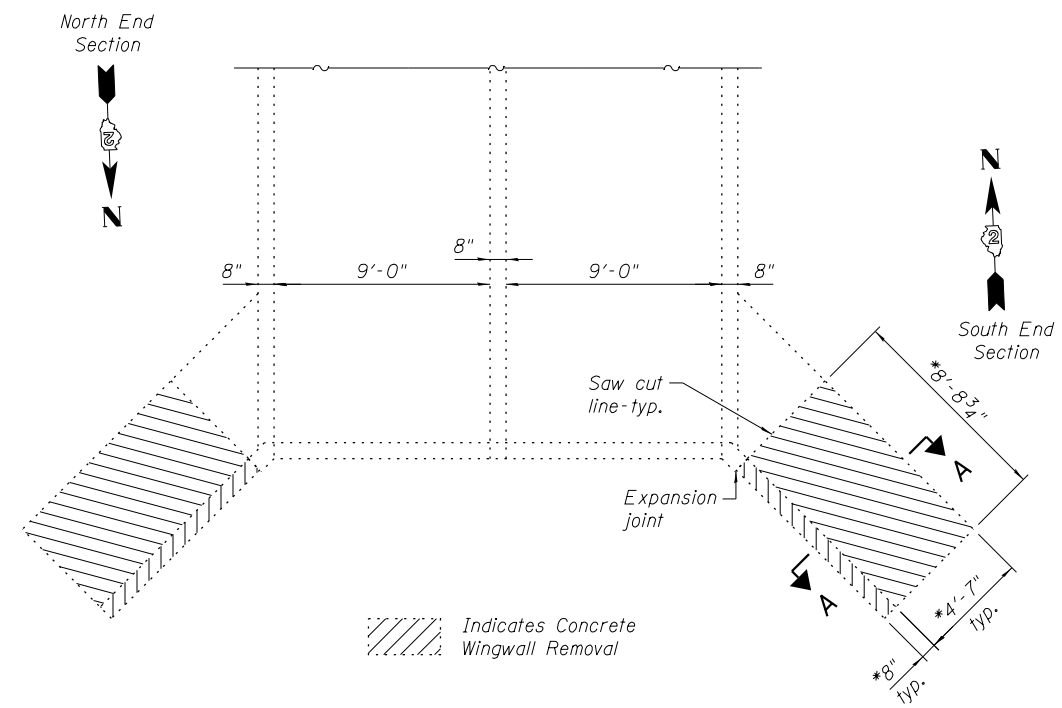


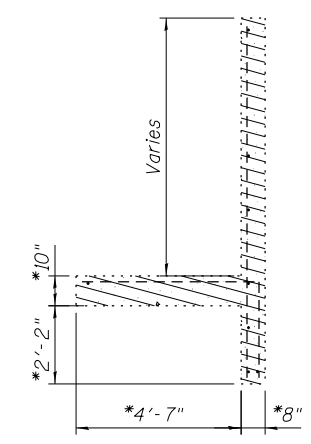
FILE NAME = W:\Projects\2010\100120 PTB 157\25\cadd\Structural\Drawings\917+91.81\Final Submittal\13.0220\917+91.81-64H1-002-SF1LE.dgn



REMOVAL PLAN

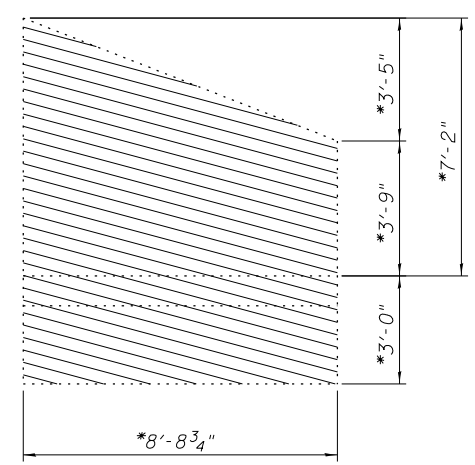
Existing north and south end section of Double 9'x6' reinforced concrete box culvert - Sta 917+91.81

*Existing plans not available.
Contractor to field verify dimensions and report any discrepancies to the Engineer.



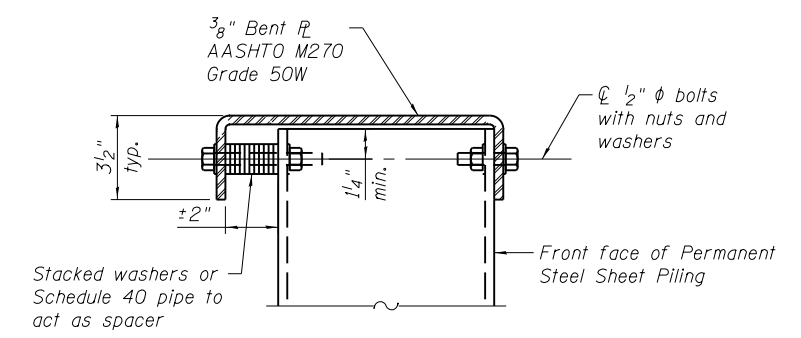
SECTION A-A

Existing reinforced concrete wingwall to be removed



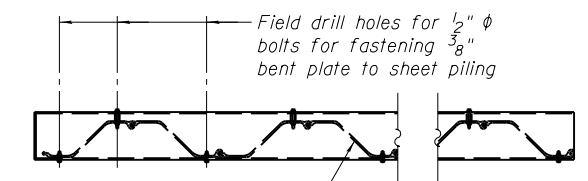
ELEVATION

Existing reinforced concrete wingwall to be removed



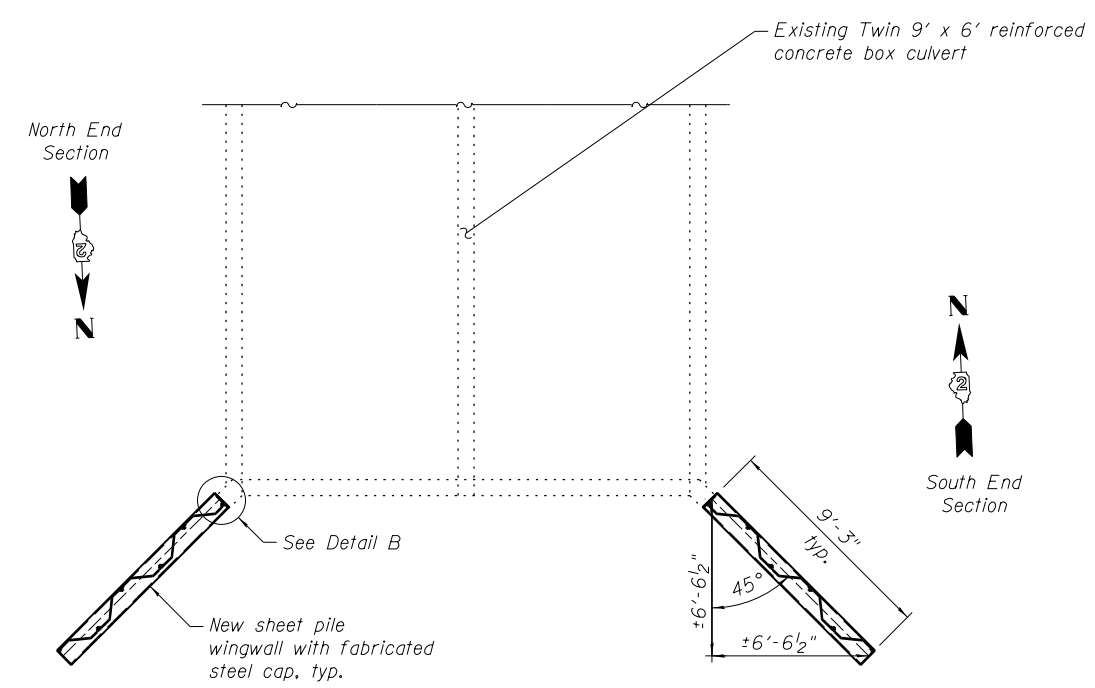
SECTION C-C

Fabricated steel cap



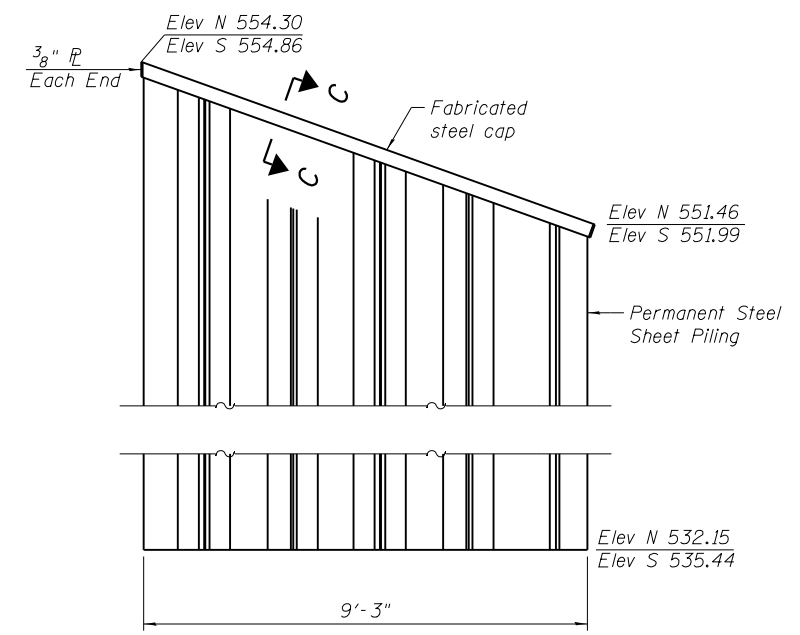
PLAN

Showing connection of fabricated steel cap to Permanent Steel Sheet Piling



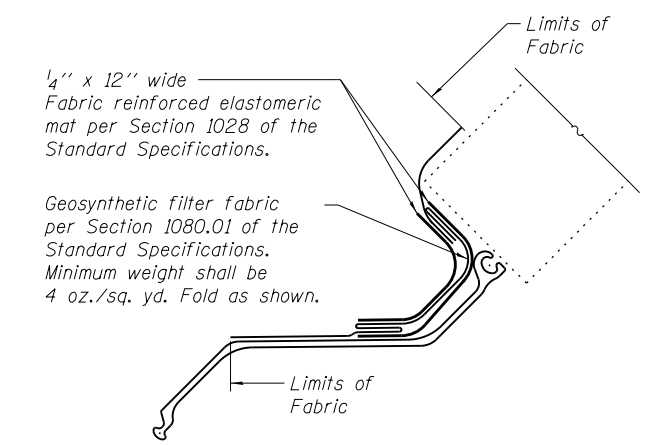
PLAN

Showing new sheet pile wingwalls



WINGWALL ELEVATION

The sheet piling for the wingwalls shall conform to the special provision Permanent Steel Sheet Piling. The minimum effective section modulus for the Permanent Steel Sheet Piling shall be 4.0 in⁴/ft.



DETAIL B

Fabric reinforced elastomeric mat and geosynthetic filter fabric shall not be paid for separately but shall be included in the cost of Permanent Steel Sheet Piling.